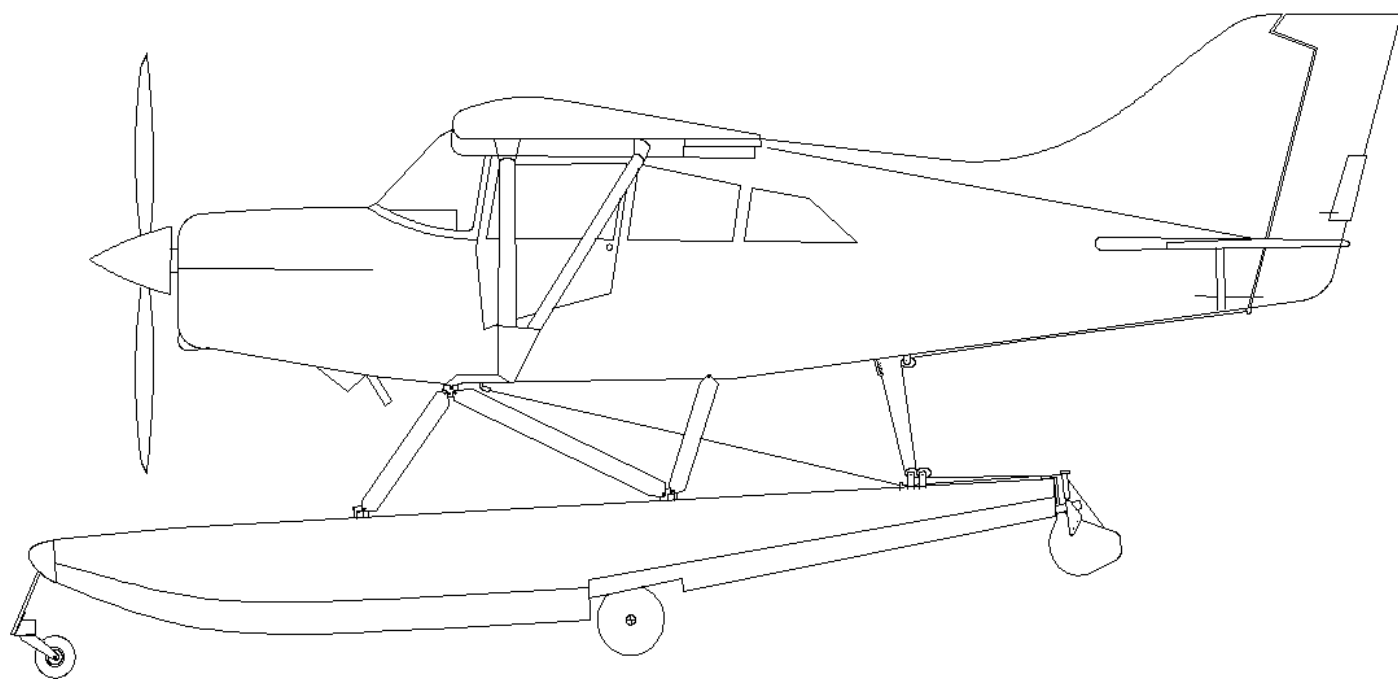


**WIPLINE FLOATS**  
**MODEL 2350**  
**PARTS MANUAL**  
**MAULE MX-7-180**



**WIPAIRE, INC.**

**1700 HENRY AVE**

**SOUTH ST. PAUL**

**MINNESOTA 55075**

**U.S.A.**

**This page blank**



## New Customer Information

<b>Customer Name</b>	
<b>Billing Address</b>	
<b>Shipping Address</b>	
Phone Number	Fax Number
<b>Purchasing Contact</b>	Phone Number
E-Mail	Fax Number
<b>Accounts Payable Contact</b>	Phone Number
E-Mail	Fax Number
Type(s) of Aircraft Owned or Maintained	
Model(s) of Floats and Skis Owned or Maintained	
FedEx and/or UPS account number (if applicable)	

Please return to Wipaire Customer Service:

Fax 651-306-0666

Phone 651-306-0459

CustomerService@wipaire.com

**This page blank**

# Warranty Claim Form

Aircraft Owner Name: \_\_\_\_\_

Address: \_\_\_\_\_

City, State, Zip: \_\_\_\_\_

Phone: \_\_\_\_\_ Fax: \_\_\_\_\_

E-Mail Address: \_\_\_\_\_

## **Aircraft Information**

Aircraft Model Number: \_\_\_\_\_ Aircraft Registration ID: \_\_\_\_\_

Aircraft Serial Number: \_\_\_\_\_

Please circle the category that most describes the aircraft's primary type of operations:

Commercial Operator      Training/Rental      Private Use      Business Use

## **Float / Ski Information**

Float / Ski Model: \_\_\_\_\_ Float / Ski Serial Numbers: \_\_\_\_\_

Total Hours on Floats / Skis to Date: \_\_\_\_\_ Approximate Hours per Year of Use: \_\_\_\_\_

Date Floats / Skis Went Into Service (New): \_\_\_\_\_

## **Claim Information**

Date of Claim: \_\_\_\_\_

Faulty Part and Number: \_\_\_\_\_ Company Performing Maintenance: \_\_\_\_\_

Work Order Number: \_\_\_\_\_ Contact Person: \_\_\_\_\_

Phone: \_\_\_\_\_ Fax: \_\_\_\_\_ E-Mail Address: \_\_\_\_\_

Wipaire Representative and any RMA or Claim Numbers: \_\_\_\_\_

Please include a brief description of the conditions at the time of failure or damage, if applicable, and any additional remarks:

---

---

---

Please fax or mail back to us. If you prefer, you can e-mail the form to [CustomerService@wipaire.com](mailto:CustomerService@wipaire.com)

THIS PAGE BLANK

# WIPLINE MODEL 2350 FLOAT PARTS MANUAL

## TABLE OF CONTENTS

<u>SECTION</u>	<u>PAGE</u>
HULL ASSEMBLY - AMPHIBIAN .....	11
HULL ASSEMBLY – SEAPLANE .....	18
TOP SKIN – HULL – AMPHIBIAN .....	24
TOP SKIN – HULL – SEAPLANE .....	28
WHEELWELL ASSEMBLY – AMPHIBIAN .....	32
EXTRUSIONS – HULL – AMPHIBIAN .....	34
EXTRUSIONS – HULL – SEAPLANE.....	36
PUMPER TUBE INSTALLATION.....	38
INSTALLATION WATER RUDDER.....	40
ASSEMBLY – NOSE GEAR RETRACTION.....	44
ASSEMBLY – NOSE GEAR – LOWER.....	48
ASSEMBLY – NOSE WHEEL.....	50
INSTALLATION MAIN GEAR RETRACTION.....	53
ASSEMBLY - MAIN GEAR WHEEL – CLEVELAND/PARKER .....	57
ASSEMBLY - MAIN GEAR WHEEL - GROVE/WIPAIRE.....	56
INSTALLATION – STRUTS, WIRES AND SPREADER BARS MAULE .....	64
INSTALLATION FUSELAGE STEPS MAULE .....	68
INSTALLATION – STEERING AND RETRACT SYSTEM MAULE .....	70
INSTALLATION – HYDRAULIC SYSTEM MAULE.....	74
ASSEMBLY – HYDRAULIC PUMP MAULE.....	78
HYDRAULIC SCHEMATIC.....	80
ELECTRICAL SCHEMATIC .....	83
GEAR CONTROL (ROUND).....	85
GEAR CONTROL (RECTANGLE) .....	87
HYDRAULIC PUMP .....	89
PLACARDS.....	91

Wipline Model 2350 Parts Manual

Log of Revisions

Revision	Pages Effected	Description	Date
A	53-59	ADDED GROVE/WIPAIRE DRAWING AND PARTS LIST AND REVISED TABLE OF CONTENTS.	12/16/05
B	43, 51	NOSE AND MAIN GEAR RETRACTION CYLINDER P/N CHANGED.	3/20/06
C	20-26	Changed float deck P/Ns.	8/3/06
D	50	Changed P/Ns for Main Gear Bushings Added part number and revision to all pages	11/3/06
E	44, 51	Hydraulic Cylinder part number changed.	7/21/07
F	Multiple pages updated	Many pages changed with updated part numbers for parts. New figure added for water rudder.	9/1/10

You may also look at the latest parts manual at [www.wipaire.com](http://www.wipaire.com).

FLOAT PART SALES DEPT. OPERATIONS

Hours: 8:30 AM - 5:00 PM, Monday through Friday  
Central U.S. Time  
Phone: 651-286-7014  
Fax: 651-306-0666

SHIPPING SCHEDULE:

Orders received before noon (central time) will be shipped the same day.

\* A fee of \$25.00 (US) will be charged for AOG / Special Priority Handling \*

As we are primarily a manufacturer, our stocks can be rapidly depleted by production requirements. Therefore, prices and availability are subject to change at any time. It is our intent to provide courteous and prompt service of your needs. Please let us know of any problems or concerns so that changes in these procedures can be a benefit for all.

A. PARTS ORDERING

Purchase orders should include:

- 1) P.O. Number
- 2) Name of person placing order
- 3) Invoicing information:
  - a) Customer name - company or individual
  - b) Address
  - c) Phone and fax number
- 4) Shipping information:
  - a) Address (if different from invoice address)
  - b) Method of shipment/preferred carrier
- 5) Aircraft model, float model and serial numbers
- 6) Wipaire part number; name; type, e.g. left or right; quantity
- 7) Payment method: VISA, MasterCard, COD (U.S. customers only),  
Pre-payment by check or wire transfer, open account (see E.)

B. \*DAMAGED GOODS\*

Inspect all parts upon receipt. Damages to parts in transit must be filed as a claim against the carrier.

C. RETURNED PARTS

Written explanation of reason for return must accompany parts, including invoice number of original shipment. Shipping charges on returned parts must be prepaid or the shipment will be refused.

D. ORDER SHORTAGES

Check shipment against delivery slip immediately. All claims for any shortages should be made within three (3) days after order receipt.

E. CREDIT POLICY

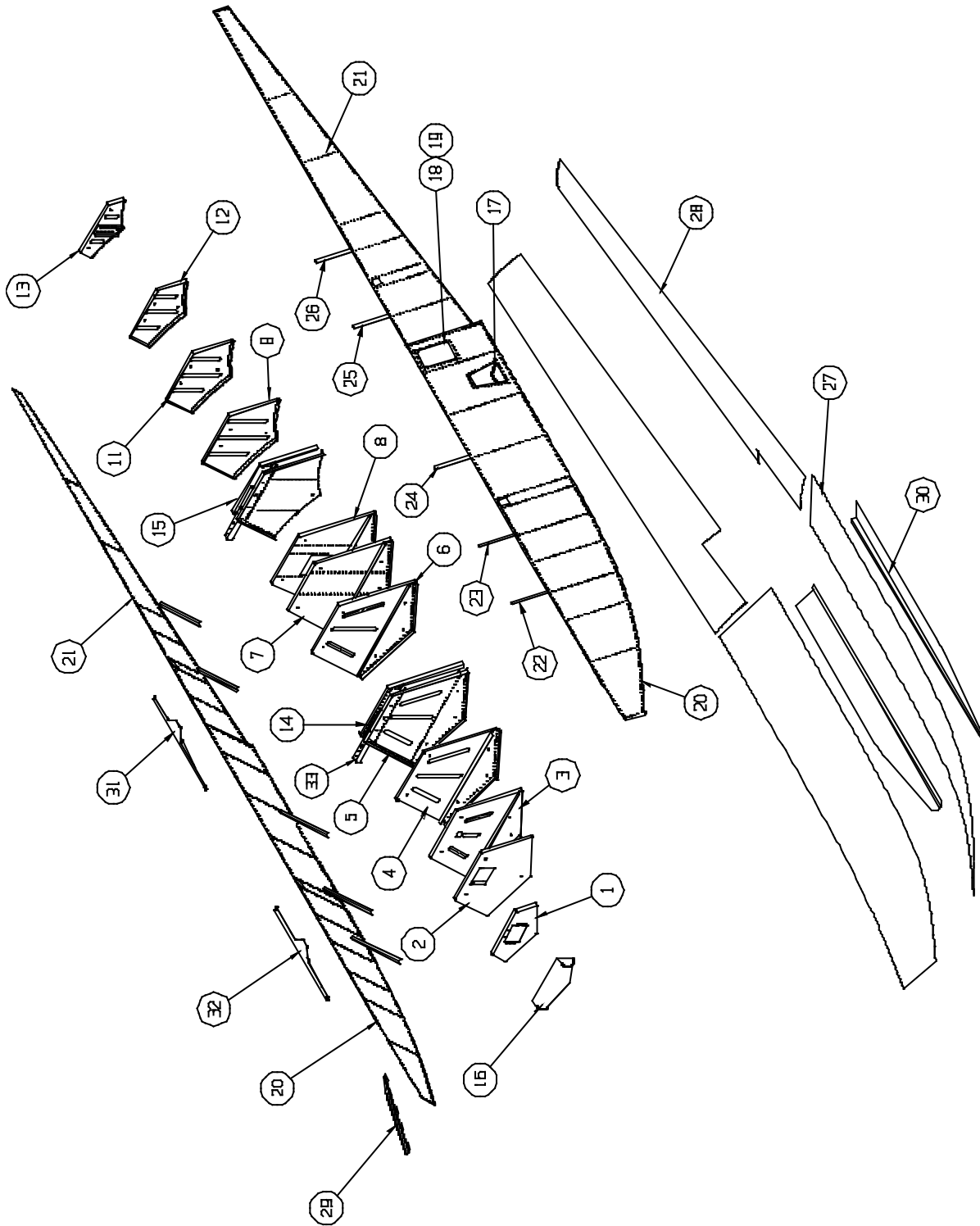
Parts will be shipped on open account, net 30 days, to Wipaire-approved credit customers only. A balance due over 60 days will result in no shipments. Wipaire, Inc reserves the right to send any order C.O.D.

All references in this manual to LEFT and RIGHT are from the perspective of the pilot's seat with the floats fully installed and ready for floatplane operation.

The following is a list of abbreviations that may appear in the description nomenclature fields of this manual.

AB	Afterbody		
Amphib.	Amphibious	Inbd.	Inboard
AR	As Required	Lg.	Large.
Assy.	Assembly	Lt.	Left
Brkt.	Bracket	Lwr.	Lower
Btm.	Bottom	Opt.	Optional
Bulk.	Bulkhead	Otbd.	Outboard
Ctr.	Center	Reinf.	Reinforcement
Cyl.	Cylinder	Rr.	Rear
Ft.	Front	Rt.	Right
Ftg.	Fitting	Sm.	Small
Fus.	Fuselage	SN	Serial Number
Fwd.	Forward	Spr.	Spreader
Horiz.	Horizontal	Upr.	Upper
Hyd.	Hydraulic	Vert.	Vertical
		W.W.	Wheel Well

WIPLINE MODEL 2350 FLOAT PARTS MANUAL



HULL ASSEMBLY - AMPHIBIAN  
FIGURE 1

WIPLINE MODEL 2350 FLOAT PARTS MANUAL

HULL ASSEMBLY - AMPHIBIAN, FIGURE 1

<u>REF NO.</u>	<u>NO. REQ.</u>	<u>PART DESCRIPTION</u>	<u>PART NO.</u>
1	1	BULKHEAD #1	21A01163-067
2	1	ASSY BULKHEAD #3	21A01000-265
	1	BULKHEAD	21A01158-184
	1	ANGLE – NOSE BOX ATTACH	21A01326-006
	1	ANGLE – NOSE BOX ATTACH	21A01326-005
3	1	ASSY BULKHEAD #4	21A01000-261
	1	BULKHEAD – MAIN	21A01158-174
	1	SUPPORT – BULKHEAD LOWER	21A01158-175
	1	CLAMP, PUMP OUT TUBE	3A01158-003
4	1	ASSY BULKHEAD #5	23A01000-296
	1	BULKHEAD - MAIN	23A01158-196
	1	SUPPORT – BULKHEAD LOWER	21A01158-176
	1	CLAMP, PUMP OUT TUBE	3A01158-003
5	1	ASSY BULKHEAD #6	23A01000-297
	1	BULKHEAD - MAIN	23A01158-197
	1	ANGLE – SIDE L.	23A01326-017
	1	ANGLE – SIDE R.	23A01326-016
	1	PANEL – SPR. BAR	21A01163-066
	1	SUPPORT – BULKHEAD LOWER	21A01158-176
	1	CLAMP, PUMP OUT TUBE	3A01158-003
6	1	ASSY BULKHEAD #7	21A01000-252
	1	BULKHEAD – MAIN	21A01158-189
	1	SUPPORT – BULKHEAD LOWER	21A01158-177
	1	GROMMET	MS35489-19
7	1	ASSY BULKHEAD #8 L.	21A01000-267
	1	BULKHEAD - MAIN	21A01158-181
	1	SUPPORT – BULKHEAD LOWER	21A01158-187
	1	ASSY BULKHEAD #8 R	21A01000-266
	1	BULKHEAD - MAIN	21A01158-182
	1	SUPPORT – BULKHEAD LOWER	21A01158-188

WIPLINE MODEL 2350 FLOAT PARTS MANUAL

HULL ASSEMBLY - AMPHIBIAN, FIGURE 1

<u>REF NO.</u>	<u>NO. REQ.</u>	<u>PART DESCRIPTION</u>	<u>PART NO.</u>
8	1	ASSY BULKHEAD #9 L.	21A01000-263
	1	BULKHEAD - MAIN	21A01158-191
	1	SUPPORT – BULKHEAD LOWER	21A01158-193
	1	ANGLE – A.B. SKIN ATTACH L.	21A01158-179
	1	ANGLE – A.B. SKIN ATTACH R.	21A01158-180
	1	ASSY BULKHEAD #9 R	21A01000-264
	1	BULKHEAD - MAIN	21A01158-190
	1	SUPPORT – BULKHEAD LOWER	21A01158-192
	1	ANGLE – A.B. SKIN ATTACH L.	21A01158-179
	1	ANGLE – A.B. SKIN ATTACH R.	21A01158-180
9	1	ASS'Y – BULKHEAD #10	21A01000-262
	1	BULKHEAD - MAIN	21A01158-169
	1	ANGLE SIDE L.	21A01326-011
	1	ANGLE SIDE R.	21A01326-012
	1	PANEL – SPR. BAR	21A01163-066
	1	CLAMP, PUMP OUT TUBE	3A01158-003
10	1	BULKHEAD #11	21A01000-395
11	1	BULKHEAD #12	21A01000-396
12	1	BULKHEAD #13	21A01000-397
13	1	ASS'Y BULKHEAD #15	23A01000-298
	1	BULKHEAD - MAIN	23A01158-198
	1	CHANNEL – REIN.	21A01158-165
	1	PLATE – AFT.	21A08156-130
14	1	ASS'Y SPR. BAR PANEL FWD	23A01000-302
	1	PANEL – SPR. BAR	21A01163-065
	1	ANGLE – SIDE L.	23A01326-019
	1	ANGLE – SIDE R.	23A01326-018
	1	BOLT	AN4-5A
	1	WASHER	NAS1149F0463P

WIPLINE MODEL 2350 FLOAT PARTS MANUAL

HULL ASSEMBLY - AMPHIBIAN, FIGURE 1

<u>REF NO.</u>	<u>NO. REQ.</u>	<u>PART DESCRIPTION</u>	<u>PART NO.</u>
	1	NUT	MS21044N4
15	1	ASS'Y SPR. BAR PANEL AFT	21A01000-259
	1	PANEL – SPR. BAR	21A01163-065
	1	ANGLE – SIDE L.	21A01326-009
	1	ANGLE – SIDE R.	21A01326-010
	1	BOLT	AN4-5A
	1	WASHER	NAS1149F0463P
	1	NUT	MS21044N4
16	1	NOSE BUMPER	21A01000-295
17	1	STEP – BOARDING	3A01000-005
18	2	REINFORCEMENT – COVER	21A01156-126
19	2	COVER – INSP.	21A01004-101
	56	SCREW – ATTACH	AN526-632R6
	2	COVER SIDE ACCESS ASSEMBLY	21A01000-427
	2	GASKET	21A01567-012
20	1	SIDE SKIN – STEP TO BOW L. OUTBR'D	23A01004-109
	1	SIDE SKIN – STEP TO BOW R. OUTBR'D	23A01004-108
	1	SIDE SKIN – STEP TO BOW L. INBR'D	23A01004-111
	1	SIDE SKIN – STEP TO BOW R. INBR'D	23A01004-110
	1	BRACKET (PADDLE)	3A01158-093
	1	PADDLE STOP	1002113
	1	CLIP (FOR HOLDING PADDLE)	3A01503-001
	1	PADDLE	0238-0035
21	1	SIDE SKIN – STEP TO STERN L. OUTBR'D	23A01004-113
	1	SIDE SKIN – STEP TO STERN R. OUTBR'D	23A01004-112
	1	SIDE SKIN – STEP TO STERN L. INBR'D	23A01004-115
	1	SIDE SKIN – STEP TO STERN R. INBR'D	23A01004-114

NOTE: DIFFERENCE BETWEEN R. AND L. IS FINISH

WIPLINE MODEL 2350 FLOAT PARTS MANUAL

HULL ASSEMBLY - AMPHIBIAN, FIGURE 1

<u>REF NO.</u>	<u>NO. REQ.</u>	<u>PART DESCRIPTION</u>	<u>PART NO.</u>
22	2	STIFFENER – SIDE SKIN	23A01340-114
23	2	STIFFENER – SIDE SKIN	23A01340-115
24	2	STIFFENER – SIDE SKIN	23A01340-116
25	2	STIFFENER – SIDE SKIN	23A01340-117
26	2	STIFFENER – SIDE SKIN	23A01340-118
27	1	ASS'Y BOTTOM SKIN FWD L.	23A01000-327
	1	ASS'Y BOTTOM SKIN FWD R. (INCLUDES BONDED STIFFENERS)	23A01000-328
	2	STIFFENER	21A01322-001
	2	STIFFENER	21A01322-002
	2	STIFFENER	21A01322-003
	2	STIFFENER	21A01322-004
	10	STIFFENER	21A01322-006
28	1	BOTTOM SKIN AFTERBODY L.	23A01004-121
	1	BOTTOM SKIN AFTERBODY R.	23A01004-120
29	1	ASS'Y SPRAY RAIL L.	21A01000-275
	1	ASS'Y SPRAY RAIL R.	21A01000-274
30	1	BOOSTER – SISTER KEEL L.	21A01000-429
	1	BOOSTER – SISTER KEEL R.	21A01000-428
31	1	DOUBLER – GUNWALL AFT L.	21A01162-033
32	1	DOUBLER – GUNWALL FWD L.	21A01162-031
	1	DOUBLER – GUNWALL FWD R.	21A01162-032
	1	DOUBLER – GUNWALL AFT R.	21A01162-034
33	2	TUBE – SPR. BAR MOUNTING	21A03115-001
	6	BOLT	AN4-22A

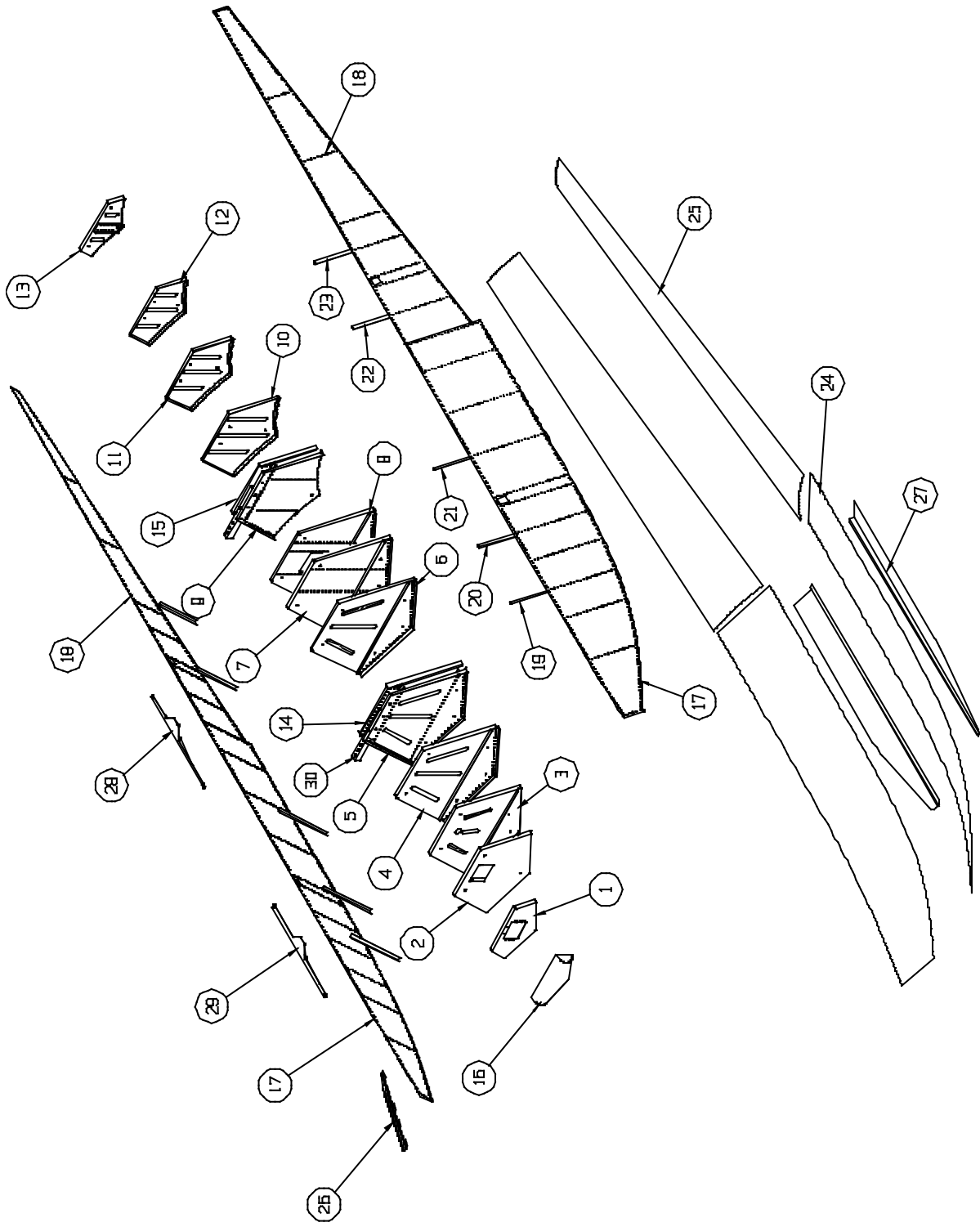
WIPLINE MODEL 2350 FLOAT PARTS MANUAL

HULL ASSEMBLY - AMPHIBIAN, FIGURE 1

<u>REF</u> <u>NO.</u>	<u>NO.</u> <u>REQ.</u>	<u>PART DESCRIPTION</u>	<u>PART NO.</u>
	12	WASHER	NAS1149D0416J
	12	WASHER	NAS1149D0463J
	6	NUT	MS21044N4

THIS PAGE BLANK

WIPLINE MODEL 2350 FLOAT PARTS MANUAL



HULL ASSEMBLY – SEAPLANE  
FIGURE 2

WIPLINE MODEL 2350 FLOAT PARTS MANUAL

HULL ASSEMBLY - SEAPLANE, FIGURE 2

<u>REF NO.</u>	<u>NO. REQ.</u>	<u>PART DESCRIPTION</u>	<u>PART NO.</u>
1	1	BULKHEAD #1	21A01163-067
	1	COVER – NOSE GEAR OPENING	21S01150-134
		A/R PLATE NUT	MS21059L3
2	1	ASSY BULKHEAD #3	21A01000-265
	1	BULKHEAD	21A01158-184
	1	ANGLE – NOSE BOX ATTACH	21A01326-006
	1	ANGLE – NOSE BOX ATTACH	21A01326-005
3	1	ASSY BULKHEAD #4	21A01000-261
	1	BULKHEAD – MAIN	21A01158-174
	1	SUPPORT – BULKHEAD LOWER	21A01158-175
	1	CLAMP, PUMP OUT TUBE	3A01158-003
4	1	ASSY BULKHEAD #5	23A01000-296
	1	BULKHEAD – MAIN	23A01158-196
	1	SUPPORT – BULKHEAD LOWER	21A01158-175
	1	CLAMP, PUMP OUT TUBE	3A01158-003
5	1	ASSY BULKHEAD #6	23A01000-297
	1	BULKHEAD - MAIN	23A01158-197
	1	ANGLE – SIDE L.	23A01326-017
	1	ANGLE – SIDE R.	22A01326-016
	1	PANEL – SPR. BAR	21A01163-066
	1	SUPPORT – BULKHEAD LOWER	21A01158-177
	1	CLAMP, PUMP OUT TUBE	3A01158-003
6	1	ASSY BULKHEAD #7	21A01000-252
	1	BULKHEAD – MAIN	21A01158-189
	1	SUPPORT – BULKHEAD LOWER	21A01158-177
	1	GROMMET	MS35489-19
7	1	ASSY BULKHEAD #8	21S01000-308
	1	BULKHEAD - MAIN	21A01158-189
	1	SUPPORT – BULKHEAD LOWER	21A01158-177

WIPLINE MODEL 2350 FLOAT PARTS MANUAL

HULL ASSEMBLY - SEAPLANE, FIGURE 2

<u>REF NO.</u>	<u>NO. REQ.</u>	<u>PART DESCRIPTION</u>	<u>PART NO.</u>
	1	CLAMP, PUMP OUT TUBE	3A01158-003
8	1	ASSY BULKHEAD #9	21S01000-309
	1	BULKHEAD – MAIN	21A01158-189
	1	SUPPORT – BULKHEAD LOWER	21A01158-177
	2	ANGLE – A.B. SKIN ATTACH	21A01158-203
	1	CLAMP, PUMP OUT TUBE	3A01158-003
9	1	ASS'Y – BULKHEAD #10	21S01000-322
	1	BULKHEAD - MAIN	21A01158-169
	1	ANGLE SIDE L.	21A01326-011
	1	ANGLE SIDE R.	21A01326-012
	1	PANEL – SPR. BAR	21A01163-066
	2	ANGLE – VERTICAL	23A01340-118
	1	CLAMP, PUMP OUT TUBE	3A01158-003
10	1	BULKHEAD #11	21A01158-168
11	1	BULKHEAD #12	21A01158-167
12	1	BULKHEAD #13	21A01158-166
13	1	ASS'Y BULKHEAD #15	23A01000-298
	1	BULKHEAD - MAIN	23A01158-198
	1	CHANNEL – REIN.	21A01158-165
	1	PLATE – AFT.	21A08156-130
14	1	ASS'Y SPR. BAR PANEL FWD	23A01000-302
	1	PANEL – SPR. BAR	21A01163-065
	1	ANGLE – SIDE L.	23A01326-019
	1	ANGLE – SIDE R.	23A01326-018
	1	BOLT	AN4-5A
	1	WASHER	NAS1149F0463P
	1	NUT	MS21044N4
15	1	ASS'Y SPR. BAR PANEL AFT	21A01000-259

WIPLINE MODEL 2350 FLOAT PARTS MANUAL

HULL ASSEMBLY - SEAPLANE, FIGURE 2

<u>REF NO.</u>	<u>NO. REQ.</u>	<u>PART DESCRIPTION</u>	<u>PART NO.</u>
	1	PANEL – SPR. BAR	21A01163-065
	1	ANGLE – SIDE L.	21A01326-009
	1	ANGLE – SIDE R.	21A01326-010
	1	BOLT	AN4-5A
	1	WASHER	NAS1149F0463P
	1	NUT	MS21044N4
16	1	NOSE BUMPER	21S01738-001
17	1	SIDE SKIN – STEP TO BOW L. OUTBR'D	23S01004-123
	1	SIDE SKIN – STEP TO BOW R. OUTBR'D	23S01004-122
	1	SIDE SKIN – STEP TO BOW L. INBR'D	23S01004-125
	1	SIDE SKIN – STEP TO BOW R. INBR'D	23S01004-124
	1	BRACKET (PADDLE)	3A01158-093
	1	PADDLE STOP	1002113
	1	CLIP (FOR HOLDING PADDLE)	3A01503-001
	1	PADDLE	0238-0035
18	1	SIDE SKIN – STEP TO STERN L. OUTBR'D	23A01004-113
	1	SIDE SKIN – STEP TO STERN R. OUTBR'D	23A01004-112
	1	SIDE SKIN – STEP TO STERN L. INBR'D	23A01004-115
	1	SIDE SKIN – STEP TO STERN R. INBR'D	23A01004-114
		<u>NOTE:</u> DIFFERENCE BETWEEN R. AND L. IS FINISH	
19	2	STIFFENER – SIDE SKIN	23A01340-114
20	2	STIFFENER – SIDE SKIN	23A01340-115
21	2	STIFFENER – SIDE SKIN	23A01340-116
22	2	STIFFENER – SIDE SKIN	23A01340-117
23	2	STIFFENER – SIDE SKIN	23A01340-118
24	1	ASS'Y BOTTOM SKIN FWD L.	23A01000-327
	1	ASS'Y BOTTOM SKIN FWD R.	23A01000-328

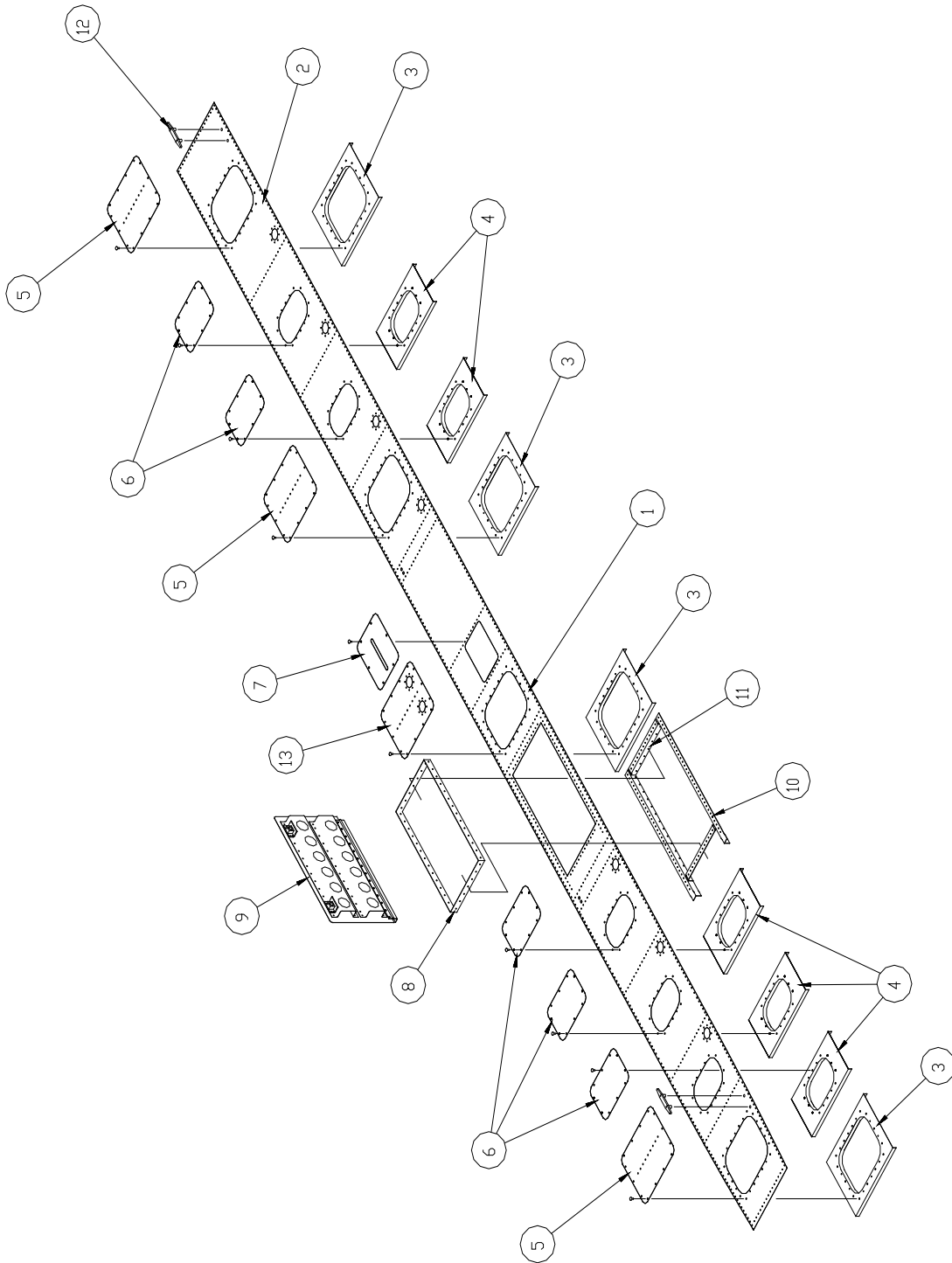
WIPLINE MODEL 2350 FLOAT PARTS MANUAL

HULL ASSEMBLY - SEAPLANE, FIGURE 2

<u>REF NO.</u>	<u>NO. REQ.</u>	<u>PART DESCRIPTION</u>	<u>PART NO.</u>
		(INCLUDES BONDED STIFFENERS)	
	2	STIFFENER	21A01322-001
	2	STIFFENER	21A01322-002
	2	STIFFENER	21A01322-003
	2	STIFFENER	21A01322-004
	10	STIFFENER	21A01322-006
25	1	BOTTOM SKIN AFTERBODY L.	23S01004-133
	1	BOTTOM SKIN AFTERBODY R.	23S01004-132
26	1	ASS'Y SPRAY RAIL L.	21A01000-275
	1	ASS'Y SPRAY RAIL R.	21A01000-274
27	1	BOOSTER – SISTER KEEL L.	21A01000-429
	1	BOOSTER – SISTER KEEL R.	21A01000-428
28	1	DOUBLER – GUNWALL AFT L.	21A01162-033
	1	DOUBLER – GUNWALL AFT R.	21A01162-034
29	1	DOUBLER – GUNWALL FWD L.	21A01162-031
	1	DOUBLER – GUNWALL FWD R.	21A01162-032
30	2	TUBE – SPR. BAR MOUNTING	21A03115-001
	6	BOLT	AN4-22A
	12	WASHER	NAS1149D0416J
	12	WASHER	NAS1149D0463J
	6	NUT	MS21044N4

THIS PAGE BLANK

WIPLINE MODEL 2350 FLOAT PARTS MANUAL



TOP SKIN – HULL – AMPHIBIAN  
FIGURE 3

WIPLINE MODEL 2350 FLOAT PARTS MANUAL

TOP SKIN - HULL – AMPHIBIAN, FIGURE 3

<u>REF NO.</u>	<u>NO. REQ.</u>	<u>PART DESCRIPTION</u>	<u>PART NO.</u>
1	1	SKIN – FWD SECTION L.	23A01004-117
	1	SKIN – FWD SECTION R.	23A01004-116
2	1	SKIN – AFT SECTION L.	23A01004-119
	1	SKIN – AFT SECTION R.	23A01004-118
3	4	SUPPORT – INSP. COVER – LARGE A/R NUT – TINNERMAN & INSULATOR	21A01002-130 1002481
4	5	SUPPORT – INSP. COVER – SMALL A/R NUT – TINNERMAN & INSULATOR	21A01002-131 1002481
		(year manufactured changes cover quantities)	
5	4/3	INSP. COVER – LARGE – W/ ANGLE & GASKETS A/R SCREW – ATTACH 4/3 SEAL – GASKET ONLY 4/3 SEAL – GASKET ONLY	21A01000-258 #8 X 5/8 1001437 21A01567-001
6	5	INSP. COVER – SMALL & GASKETS A/R SCREW – ATTACH 5 SEAL – GASKET ONLY 5 SEAL – GASKET ONLY	21A01000-284 #8 X 5/8 1001728 21A01567-002
7	1	COVER – GEAR INDICATOR L.	21A01002-137
	1	COVER – GEAR INDICATOR R.	21A01002-138
	1	PLACARD – DOWN - LAND	10A3-6338-1
	1	PLACARD – UP - WATER	10A3-6338-2
	4	SCREW – CAM - LOK	2600-3
	2	SCREW – CAM – LOK	1126000-5
	6	RECEPTACLE – CAM – LOK	212-12
8	1	JAMB – BAGGAGE DOOR	21A01150-131
	1	JAMB – HINGE SIDE	1002067
9	1	ASSY – BAGGAGE DOOR	21A01000-268
	1	COVER - SKIN	21A01162-035

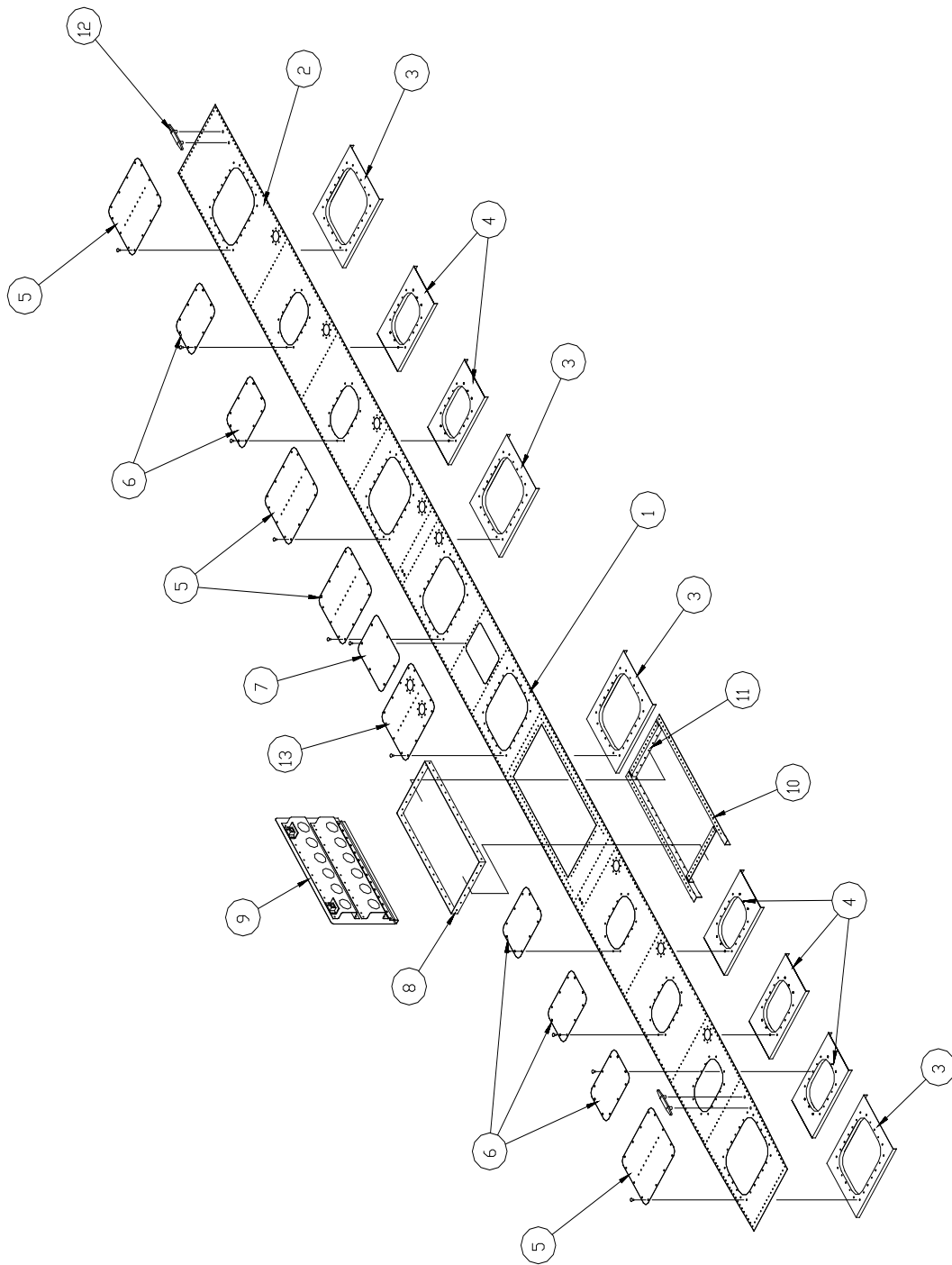
WIPLINE MODEL 2350 FLOAT PARTS MANUAL

TOP SKIN - HULL – AMPHIBIAN, FIGURE 3

<u>REF NO.</u>	<u>NO. REQ.</u>	<u>PART DESCRIPTION</u>	<u>PART NO.</u>
	1	HINGE	21A01741-004
	1	HINGE PIN	1002186
	2	STIFFENER - DOOR	21A01010-012
	2	STIFFENER ENDS	21A01004-106
	2	RETAINER - LOCK	3A01206-001
	2	LOCK PIN	3A01273-004
	2	CATCH – LATCH	3A01702-004
	2	LOCK SPRING	3A01525-003
	2	RING – OPENING	1002663
	1	SEAL – GASKET (NOT SHOWN) BAGGAGE HUTCH	1001438
	12	POP RIVET	01692-0410
	2	BOLT	10/32 X ½ SS
10	1	TOP RAIL – BAGGAGE OPENING L.	21A01326-003
	1	TOP RAIL – BAGGAGE OPENING R.	21A01326-002
11	2	JAMB – BAGGAGE DOOR	21A01326-004
12	2	CLEAT – TIE DOWN	21A01203-001
	4	BUSHING	21A01280-004
	4	SCREW – ATTACH	AN525-10R24
13	1	INSP. COVER – LARGE – W/ ANGLE (2 CUPS) & GASKETS	21A01000-273
		A/R SCREW – ATTACH	#8 X 5/8
	1	SEAL – GASKET ONLY	1001437

THIS PAGE BLANK

WIPLINE MODEL 2350 FLOAT PARTS MANUAL



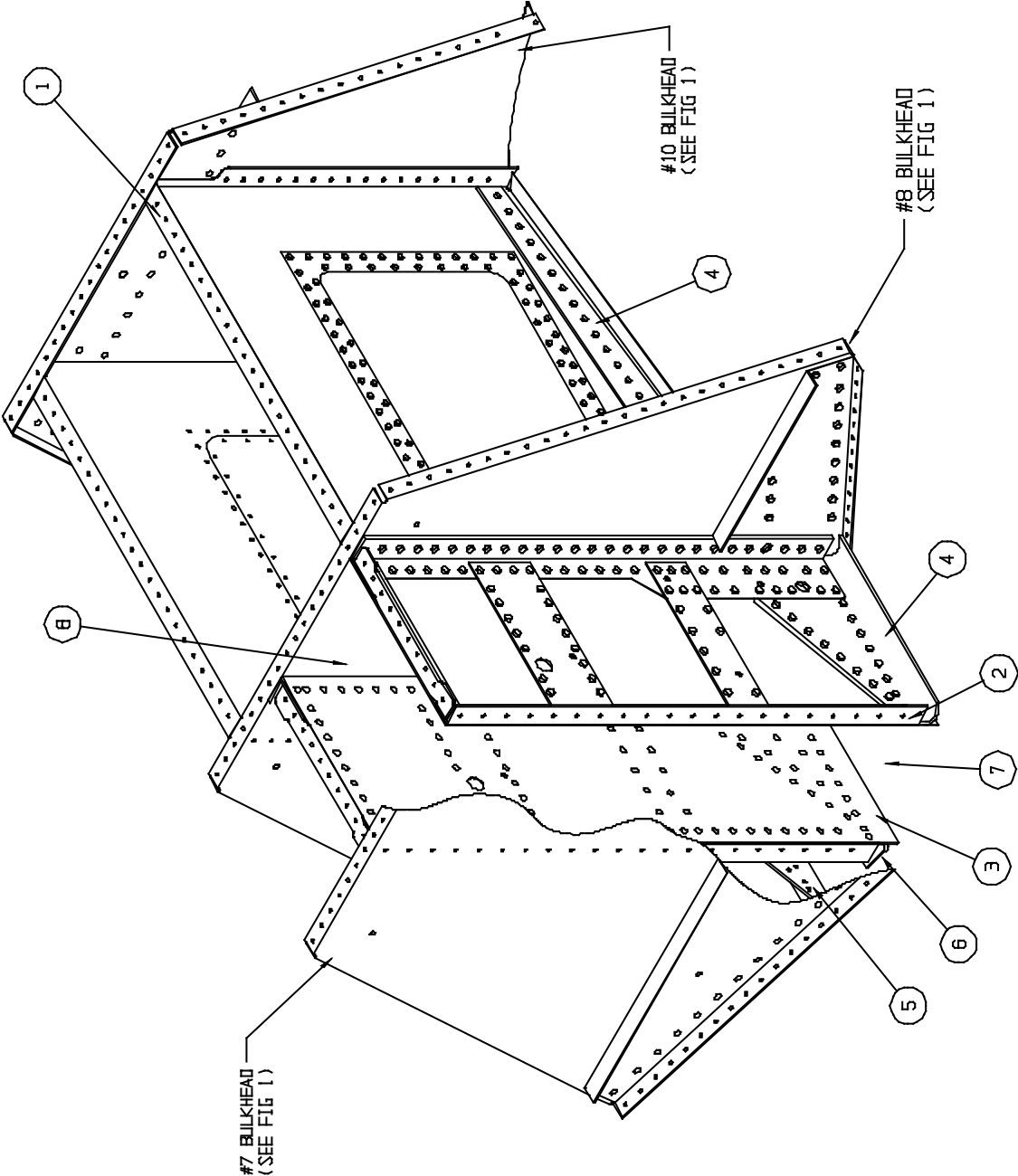
TOP SKIN – HULL – SEAPLANE  
FIGURE 4

1	1 SKIN – FWD SECTION L.	23S01004-139
	1 SKIN – FWD SECTION R.	23S01004-138
2	1 SKIN – AFT SECTION L.	23S01004-141
	1 SKIN – AFT SECTION R.	23S01004-140
3	5 SUPPORT – INSP. COVER - LARGE A/R NUT – TINNERMAN & INSULATOR	21A01002-130 1002481
4	5 SUPPORT – INSP. COVER – SMALL A/R NUT – TINNERMAN & INSULATOR	21A01002-131 1002481
5	5 INSP. COVER – LARGE – W/ ANGLE & GASKETS A/R SCREW – ATTACH 5 SEAL – GASKET ONLY 5 SEAL – GASKET	21A01000-258 #8 X 5/8 1001437 21A01567-001
6	5 INSP. COVER – SMALL & GASKETS A/R SCREW – ATTACH 5 SEAL – GASKET ONLY 5 SEAL – GASKET	21A01000-284 #8 X 5/8 1001728 21A01567-002
7	1 COVER W/ GASKET 1 SEAL – GASKET A/R SCREW – ATTACH A/R NUT – TINNERMAN & INSULATOR 2 STIFFENER – ANGLE	21S01000-399 21S01567-013 #8 X 5/8 1002481 30S01326-035
8	1 JAMB – BAGGAGE DOOR 1 JAMB – BAGGAGE DOOR, HINGE SIDE	21A01150-131 1002067
9	1 ASSY – BAGGAGE DOOR 1 COVER – SKIN 1 HINGE 2 STIFFENER – DOOR 1 HINGE PIN 2 STIFFENER ENDS	21A01000-268 21A01162-035 21A01741-004 21A01010-012 1002186 21A01004-106

	2	RETAINER – LOCK	3A01206-004
	2	LOCK PIN	3A01273-004
	2	CATCH – LATCH	3A01702-001
	2	LOCK SPRING	3A01525-003
	2	RING – OPENING	1002663
	1	SEAL – GASKET (NOT SHOWN)	1001438
	12	POP RIVET	01692-0410
	2	BOLT	10/32 X ½ SS
10	1	TOP RAIL – BAGGAGE OPENING L.	21A01326-003
	1	TOP RAIL – BAGGAGE OPENING R.	21A01326-002
11	1	JAMB – BAGGAGE DOOR	21A01326-004
12	2	CLEAT – TIE DOWN	21A01203-001
	4	BUSHING	21A01280-004
	4	SCREW – ATTACH	AN525-10R24
13	1	INSP. COVER – LARGE – W/ ANGLE (2 CUPS) & GASKETS	21A01000-273
		A/R SCREW – ATTACH	#8 X 5/8
	1	SEAL – GASKET ONLY	1001437

This page Blank

WIPLINE MODEL 2350 FLOAT PARTS MANUAL

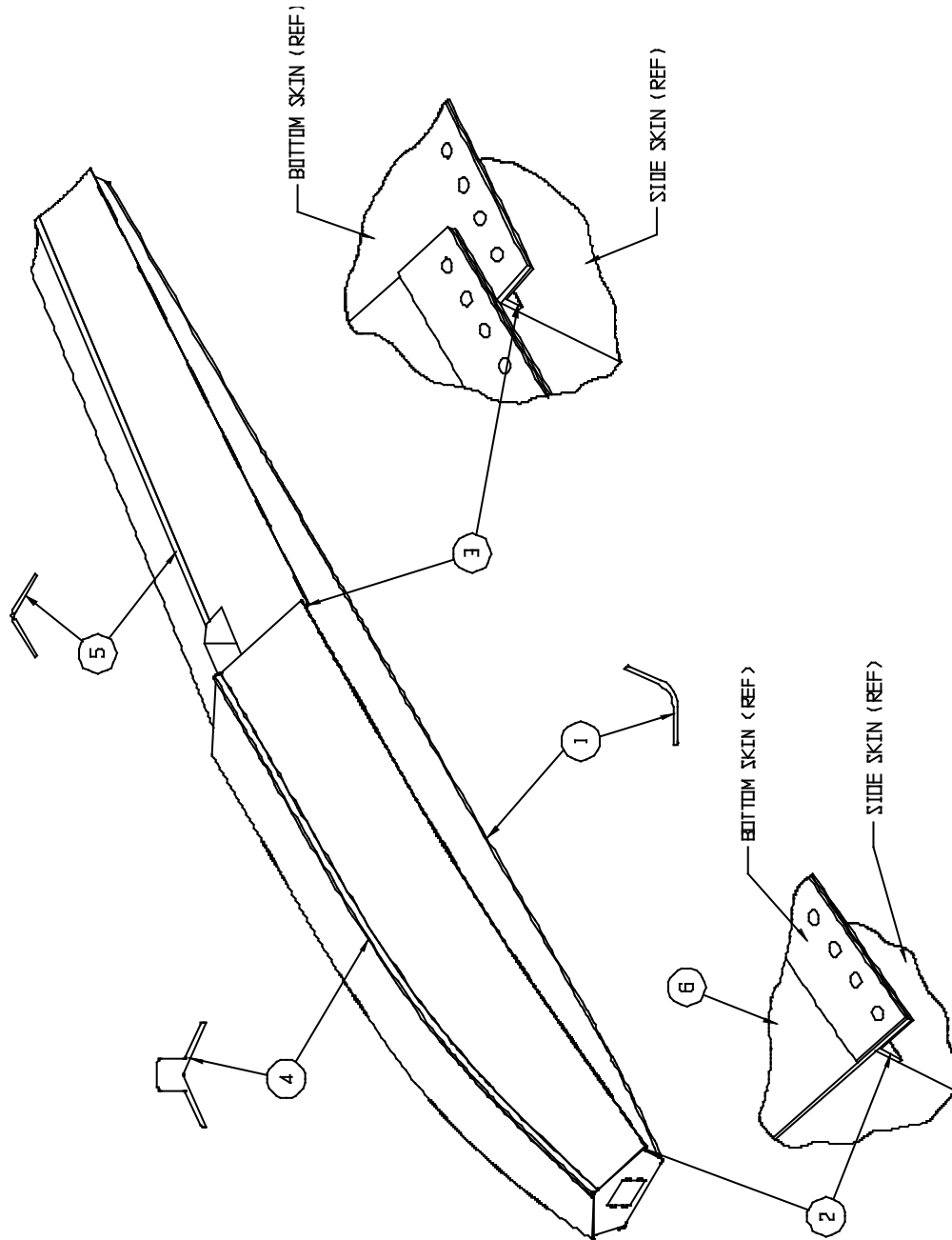


WHEELWELL ASSEMBLY – AMPHIBIAN  
FIGURE 5

WIPLINE MODEL 2350 FLOAT PARTS MANUAL  
WHEELWELL ASSEMBLY – AMPHIBIAN, FIGURE 5

<u>REF NO.</u>	<u>NO. REQ.</u>	<u>PART DESCRIPTION</u>	<u>PART NO.</u>
1	1	ASS'Y – WHEELWELL HALF L.	21A01000-289
	1	PANEL – FORMED L.	21A01158-185
	1	RING – COVER REINFORCEMENT	13A01156-124
	1	COVER	21A01158-163
	28	SCREW	AN526-632R6
	1	ASS'Y – WHEELWELL HALF R.	21A01000-290
	1	PANEL – FORMED R.	21A01158-186
	1	RING – COVER REINFORCEMENT	13A01156-124
	1	COVER	21A01158-163
	28	SCREW	AN526-632R6
2	1	ASS'Y – WHEELWELL PANEL – OUTBR'D L.	21A01000-257
	1	ASS'Y - WHEELWELL PANEL – OUTBR'D R.	21A01000-256
3	1	ASS'Y – WHEELWELL PANEL – INBR'D L.	21A01000-255
	1	ASS'Y - WHEELWELL PANEL – INBR'D R.	21A01000-254
4	1	CARRY-THRU STRAP OUTBR'D L.	21A01017-005
	1	CARRY-THRU STRAP OUTBR'D R.	21A01017-004
5	1	CARRY-THRU STRAP INBR'D L.	21A01017-003
	1	CARRY-THRU STRAP INBR'D R.	21A01017-002
6	1	CARRY-THRU STRAP INBR'D L.	21A01017-007
	1	CARRY-THRU STRAP INBR'D R.	21A01017-006
	1	ANGLE – ATTACH AFT L.	21A01156-131
	1	ANGLE – ATTACH AFT R.	21A01156-132
	1	SHIM	21A01156-125
	2	ANGLE – ATTACH FWD	21A01326-015
	7	SAND GUARD (NOT SHOWN)	21A01150-136
4	4	SCREW	AN526-1032R8
	1	SAND GUARD ASS'Y	21A01000-398
	4	NUT PLATE	MS21078-3
	8	MUD FLAP (NOT SHOWN)	21A01569-001
1	REINFORCEMENT	21A01150-135	

WIPLINE MODEL 2350 FLOAT PARTS MANUAL



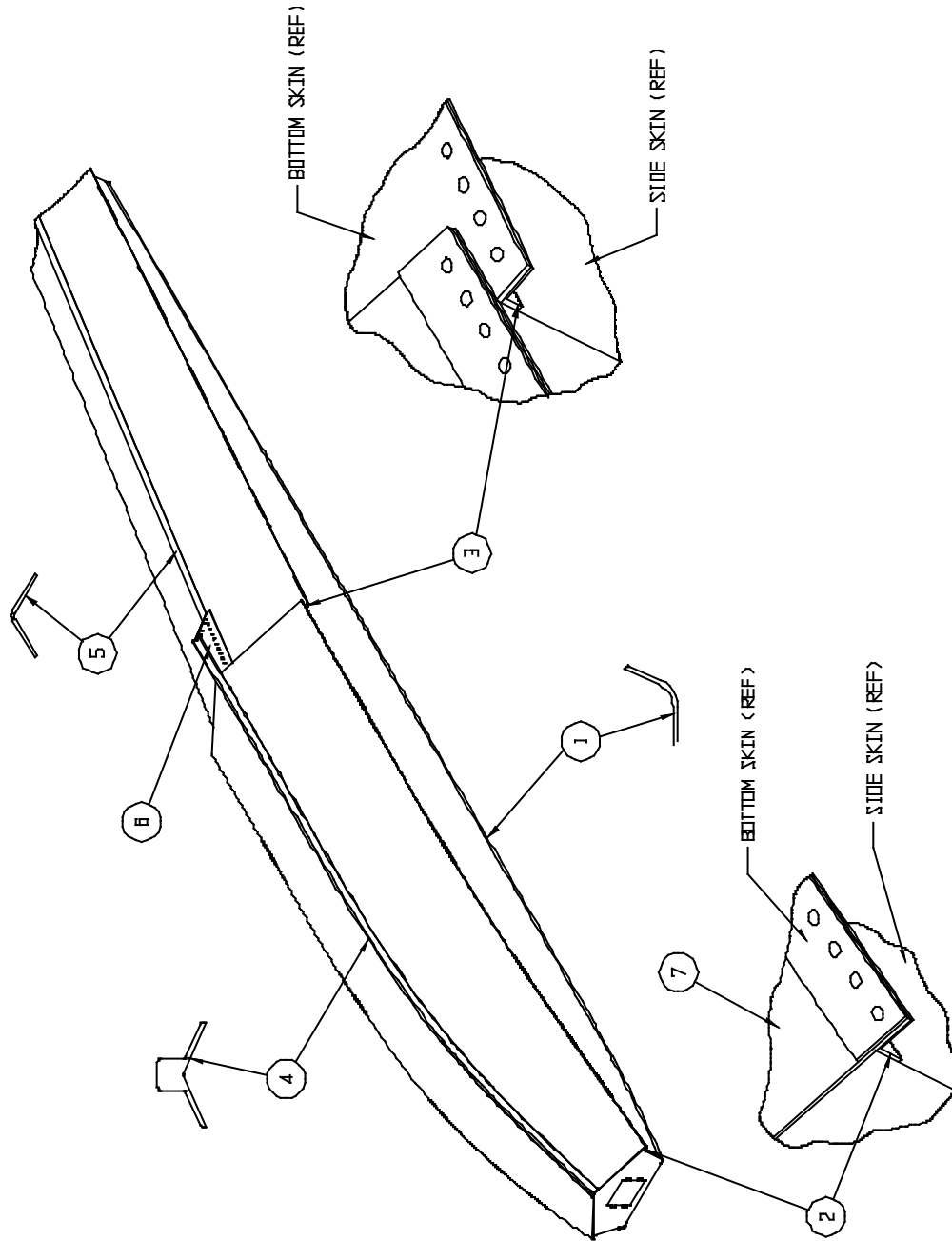
EXTRUSIONS – HULL – AMPHIBIAN  
FIGURE 6

WIPLINE MODEL 2350 FLOAT PARTS MANUAL

EXTRUSIONS - HULL – AMPHIBIAN, FIGURE 6

<u>REF NO</u>	<u>NO. REQ.</u>	<u>PART DESCRIPTION</u>	<u>PART NO.</u>
1	1	GUNWALL – L.	23A01324-003
	1	GUNWALL – R.	23A01324-004
2	1	CHINE - FWD L.	23A01340-013
	1	CHINE – FWD R.	23A01340-012
3	1	CHINE – AFTERBODY L.	23A01340-011
	1	CHINE – AFTERBODY R.	23A01340-010
4	1	KEEL - MAIN	23A01321-002
5	1	KEEL - AFTERBODY	23A01008-170
6	1	STRAP – CHINE L.	23A01005-295
	1	STRAP – CHINE R.	23A01005-296

WIPLINE MODEL 2350 FLOAT PARS MANUAL



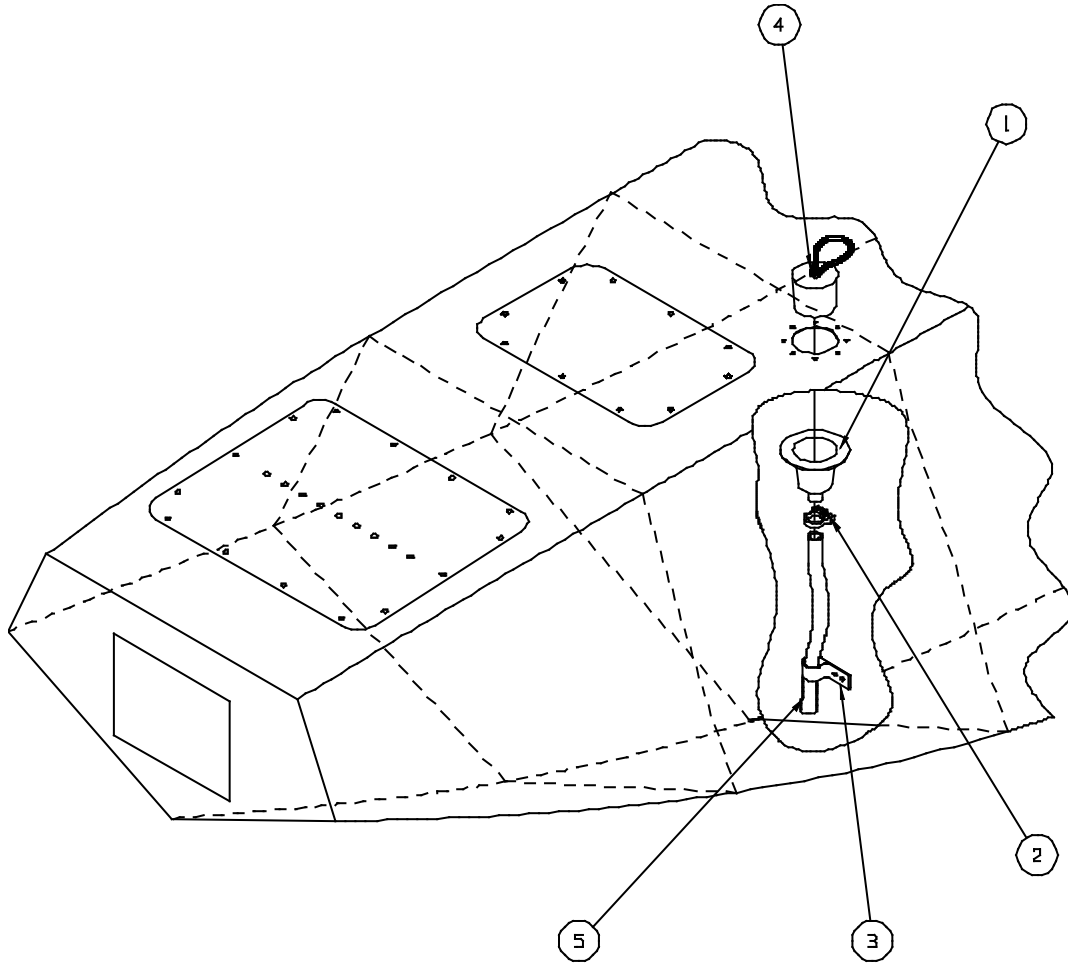
EXTRUSIONS – HULL – SEAPLANE  
FIGURE 7

WIPLINE MODEL 2350 FLOAT PARTS MANUAL

EXTRUSIONS - HULL - SEAPLANE, FIGURE 7

<u>REF NO.</u>	<u>NO. REQ.</u>	<u>PART DESCRIPTION</u>	<u>PART NO.</u>
1	1	GUNWALL – L.	23A01324-003
	1	GUNWALL – R.	23A01324-004
2	1	CHINE - FWD L.	23A01340-013
	1	CHINE – FWD R.	23A01340-012
3	1	CHINE – AFTERBODY L.	23A01340-011
	1	CHINE – AFTERBODY R.	23A01340-010
4	1	KEEL - MAIN	23S01321-003
5	1	KEEL - AFTERBODY	23S01008-173
6	1	ANGLE SUPPORT – AFTERBODY L.	21S01163-037
	1	ANGLE SUPPORT – AFTERBODY R.	21S01163-038
7	1	STRAP - CHINE L.	23A01005-295
	1	STRAP – CHINE R.	23A01005-296

WIPLINE MODEL 2350 FLOAT PARTS MANUAL



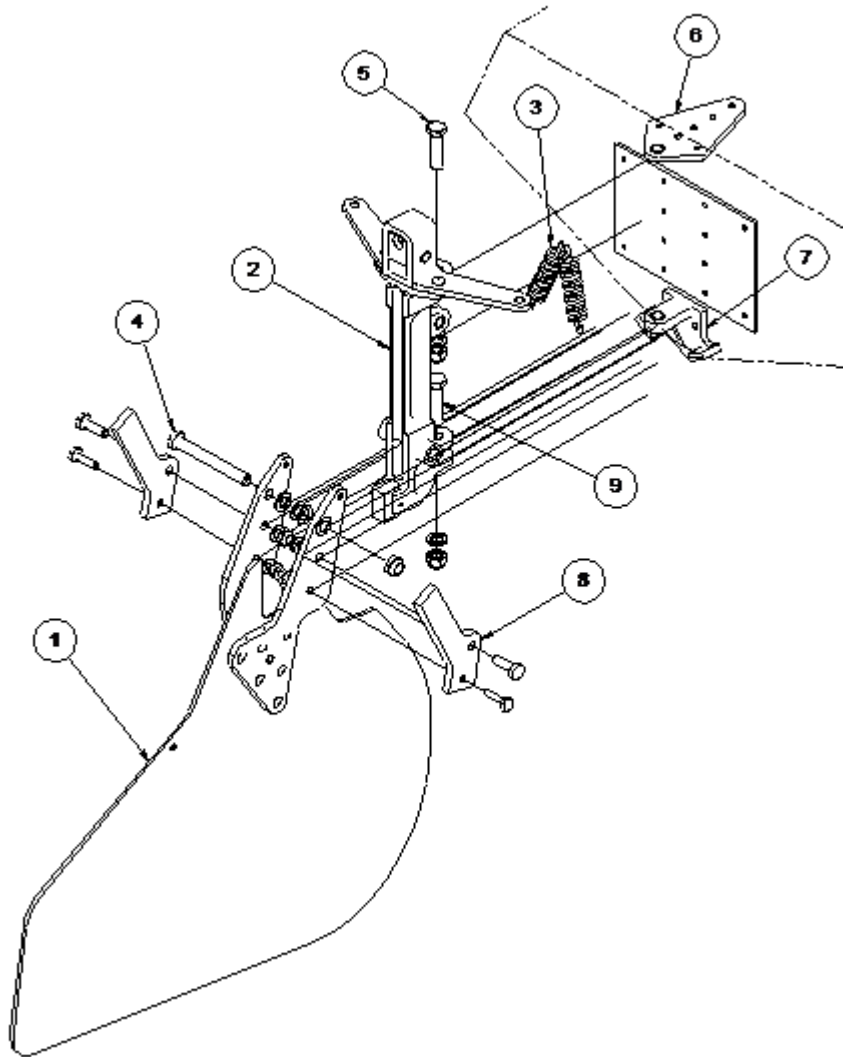
PUMPER TUBE INSTALLATION  
FIGURE 8

WIPLINE MODEL 2350 FLOAT PARTS MANUAL

PUMPOUT TUBE INSTALLATION, FIGURE 8

<u>REF NO.</u>	<u>NO. REQ.</u>	<u>PART DESCRIPTION</u>	<u>PART NO.</u>
1	1	CUP – PUMPOUT ALUM. A/R RIVETS	4A01749-001 MS20470AD4-4
2	1	CLAMP – UPPER END	57134
3	1	CLAMP – LOWER END	3A01158-003
4	1	STOPPER – PUMPER TUBE	2111
5	1	PUMPOUT TUBE 10.5 IN.	21A01618-062
	1	PUMPOUT TUBE 12.5 IN.	21A01618-061
	1	PUMPOUT TUBE 15.0 IN.	21A01618-060
	1	PUMPOUT TUBE 17.5 IN.	21A01618-059
	1	PUMPOUT TUBE 23.0 IN.	21A01618-058
	1	PUMPOUT TUBE 21.5 IN.	21A01618-056
	1	PUMPOUT TUBE 18.5 IN.	21A01618-055

WIPLINE MODEL 2350 FLOAT PARTS MANUAL



INSTALLATION WATER RUDDER  
FIGURE 9

WIPLINE MODEL 2350 FLOAT PARTS MANUAL

INSTALLATION WATER RUDDER, FIGURE 9

<u>REF NO.</u>	<u>NO. REQ.</u>	<u>PART DESCRIPTION</u>	<u>PART NO.</u>
1	1	ASSY. - BLADE	21A08000-123
	1	BLADE	1002649
	1	ARM L.	21A08019-001
	1	ARM R.	21A08019-002
2	1	WATER RUDDER POST WITH BELLCRANK ASSEMBLY	1003859
	1	WATER RUDDER POST ASSEMBLY	1003855
	1	BELLCRANK, WATER RUDDER POST ASSEMBLY	1003853
	1	BUMBER, DOWN STOP	21A08648-002
	1	ROLL PIN	1001457
	1	GUIDE, RETRACT	21A8602-009
	1	PIN ATTACH	5/16 x 1 ½ inches
3	2	SPRING	21A08525-006
4	1	BOLT - ATTACH	AN5-25A
	3	WASHER	NAS1149D0516J
	1	WASHER	NAS 1149D0563J
	1	NUT	MS21083N5
5	1	BOLT, ATTACH	AN5-11A
	1	WASHER	NAS1149D0563J
	1	NUT	MS21044N5
6	1	ASSEMBLY – TOP BEARING	21A01000-299
	1	PLATE	21A01019-003
	1	BEARING	21A01705-003
7	1	ASSEMBLY – LOWER BEARING	21A01000-301
	1	BRACKET	21A08318-002
	1	BEARING	05DU06
8	2	STOP	23A08234-003
	2	BOLT – ATTACH LOWER	AN4-6A
	2	WASHER	NAS1149D0416J
	2	NUT	MS21083N4

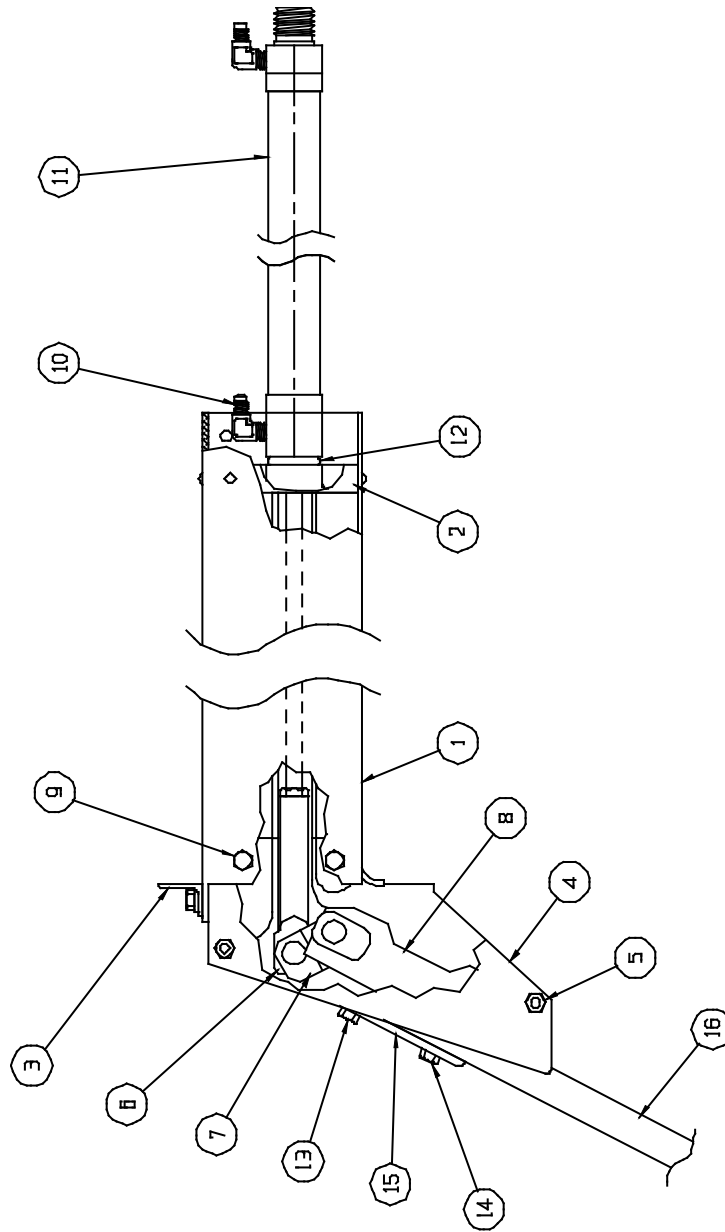
WIPLINE MODEL 2350 FLOAT PARTS MANUAL

INSTALLATION WATER RUDDER, FIGURE 9

<u>REF NO.</u>	<u>NO. REQ.</u>	<u>PART DESCRIPTION</u>	<u>PART NO.</u>
	2	BOLT – ATTACH LOWER	AN3-6A
	2	WASHER	NAS1149D0316J
	2	NUT	MS21044N3
9	1	BOLT, ATTACH	AN5-12A
	4	WASHER	NAS1149D0563J
	1	NUT	MS21044N5

THIS PAGE BLANK

WIPLINE MODEL 2350 FLOAT PARTS MANUAL



ASSEMBLY – NOSE GEAR RETRACTION  
FIGURE 10

WIPLINE MODEL 2350 FLOAT PARTS MANUAL

ASSEMBLY – NOSE GEAR RETRACTION, FIGURE 10

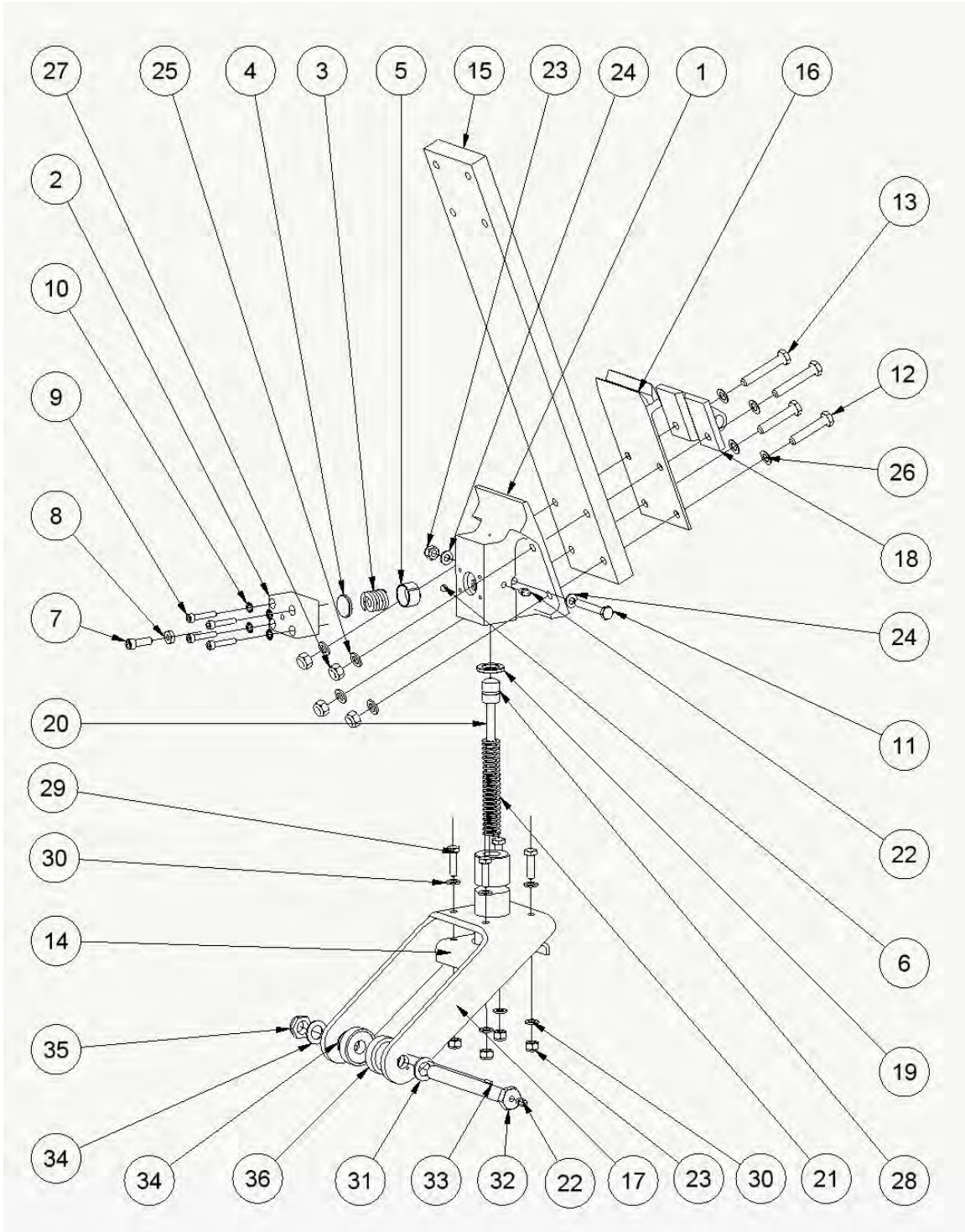
<u>REF NO.</u>	<u>NO. REQ.</u>	<u>PART DESCRIPTION</u>	<u>PART NO.</u>
1	1	ASS'Y – NOSE BOX	21A07000-015
	1	NOSE – BOX	21A07323-001
	1	COVER – ACCESS	8A01008-080
	1	GASKET	30A07567-011
	4	SCREW	AN526-1032R4
2	1	END – CAP - AFT	21A07237-002
3	1	ANGLE	21A07359-194
	2	BOLT	AN4-6A
	2	WASHER	NAS1149D0463J
	2	WASHER	NAS1149D0416J
	2	NUT	MS21044N4
4	1	TRACK – NOSE END L.	21A07349-003
	1	TRACK – NOSE END R.	21A07349-004
5	2	BOLT	AN4-53A
	4	WASHER	NAS1149D0416J
	2	NUT	NAS5679-A4W
6	1	ROD END - RAM	21A07094-002
	1	NUT - JAMB	AN316-5R
7	1	LINK – DOWN LOCK	21A07032-005
	1	AXLE – SHAFT	21A07509-007
	2	ROLLER	3A07530-001
	2	SNAP RING	5100-46-H
8	1	TROLLEY – SPRING ATTACH	21A07187-009
	2	AXLES - SHAFT	34A07509-008
	4	BLOCK - SLIDE	3A07604-001
9	4	BOLT	AN4-5A
	4	WASHER	NAS1149D0463J
	4	WASHER	NAS1149D0416J

WIPLINE MODEL 2350 FLOAT PARTS MANUAL  
 ASSEMBLY – NOSE GEAR RETRACTION, FIGURE 10

<u>REF NO.</u>	<u>NO. REQ.</u>	<u>PART DESCRIPTION</u>	<u>PART NO.</u>
	4	NUT	NAS5679-A4W
10	2	ELBOW	MS20822-4D
11	1	HYDRAULIC CYLINDER	1002571
12		A/R WASHER	NAS1149D1416J
13	2	BOLT	AN5-20A
		A/R WASHER	NAS1149F0563P
	2	NUT	MS21044N5
14	2	BOLT	AN5-21A
		A/R WASHER	NAS1149F0563P
	2	NUT	MS21044N5
15	1	PLATE – BEARING UPPER	21A06166-001
16	1	NOSE SPRING	23A06654-002

THIS PAGE BLANK

WIPLINE MODEL 2350 FLOAT PARTS MANUAL



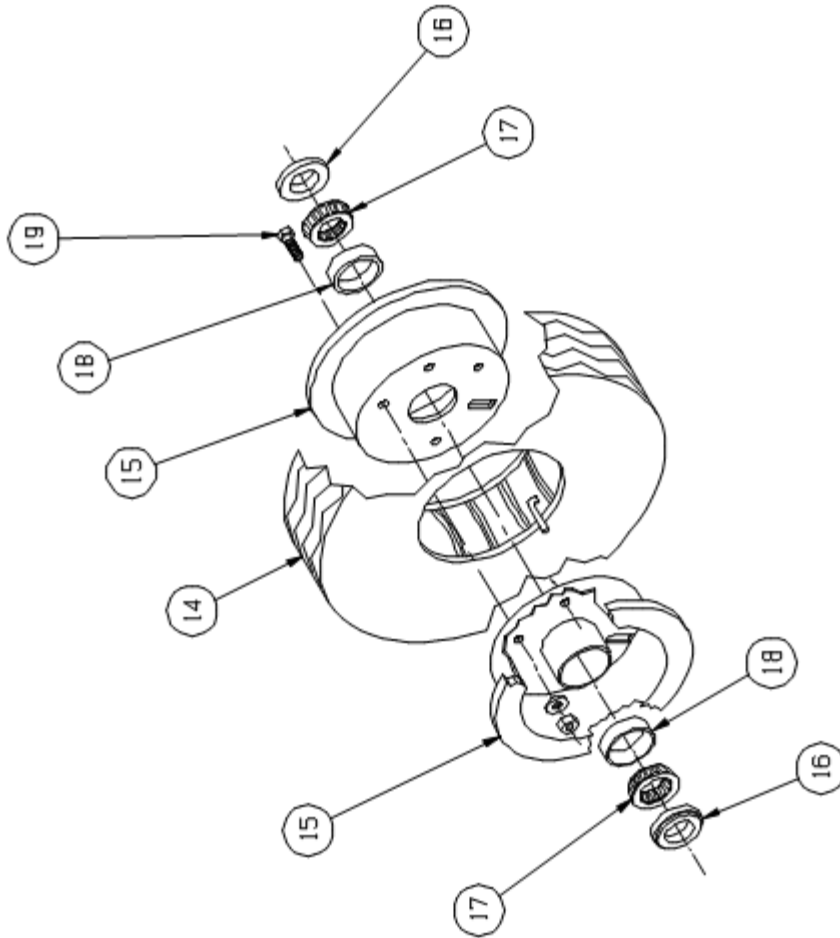
ASSEMBLY – NOSE GEAR – LOWER  
FIGURE 11

WIPLINE MODEL 2350 FLOAT PARTS MANUAL

ASSEMBLY – NOSE GEAR LOWER, FIGURE 11

<u>REF NO.</u>	<u>NO. REQ.</u>	<u>PART DESCRIPTION</u>	<u>PART NO.</u>
1	1	PIVOT BLOCK - NOSE GEAR	21A06318-005
2	1	SPRING BLOCK	21A06194-005
3	1	PRESSURE SPRING	21A06705-005
4	1	PRESSURE PLATE	21A06160-053
5	1	FRICITION CUP	21A06475-006
6	1	1/4" CHROME BALL BEARING	9528K15
7	1	1/4-20 SOCKET HEAD CAP SCREW	MS16997-60
8	1	1/4-20 NUT	MS35649-2252
9	4	10-24 SOCKET HEAD CAP SCREW	NAS1352-3-18P
10	4	WASHER STAR	MS35333-39
11	1	MODIFIED BOLT	30A06702-016
12	2	BOLT	AN5-15A
13	2	BOLT	AN5-17A
14	1	ASS"Y - PIVOT SHAFT	21A06000-020
15	1	SPRING NOSE GEAR (2350)	23A06654-002
16	1	BEARING PLATE, LOWER, NOSE SPRING	21A06237-001
17	1	FORK, NOSE GEAR	21A06020-001
18	1	TOW HOOK NOSE GEAR	21A06213-006
19	1	THRUST WASHER	3A06602-001
20	1	NOSE WHEEL PLUNGER	21A06605-002
21	1	SPRING	M62-350
22	2	COMMON GREASEZERK	1095K41
23	5	Nut	MS21044N4
24	2	WASHER	NAS1149D0463J
25	4	WASHER	NAS1149F0563P
26	4	WASHER	NAS1149F0532P
27	4	Nut	MS21044N5
28	1	O-RING	AN6227-9
29	4	Bolt	AN4-7A
30	8	WASHER	NAS1149F0463P
31	1	MODIFIED WASHER	3A06702-003
32	1	BOLT - NOSE WHEEL AXLE	3A06702-002
33	1	PIN, ANTIROTATION	21A06476-003
34	3	WASHER	NAS1149D0863J
35	1	NUT	MS21083N8
36	2	SPACER - NOSE WHEEL - SMALL FLOAT	3A06259-001

WIPLINE MODEL 2350 FLOAT PARTS MANUAL



ASSEMBLY – NOSE WHEEL  
FIGURE 12

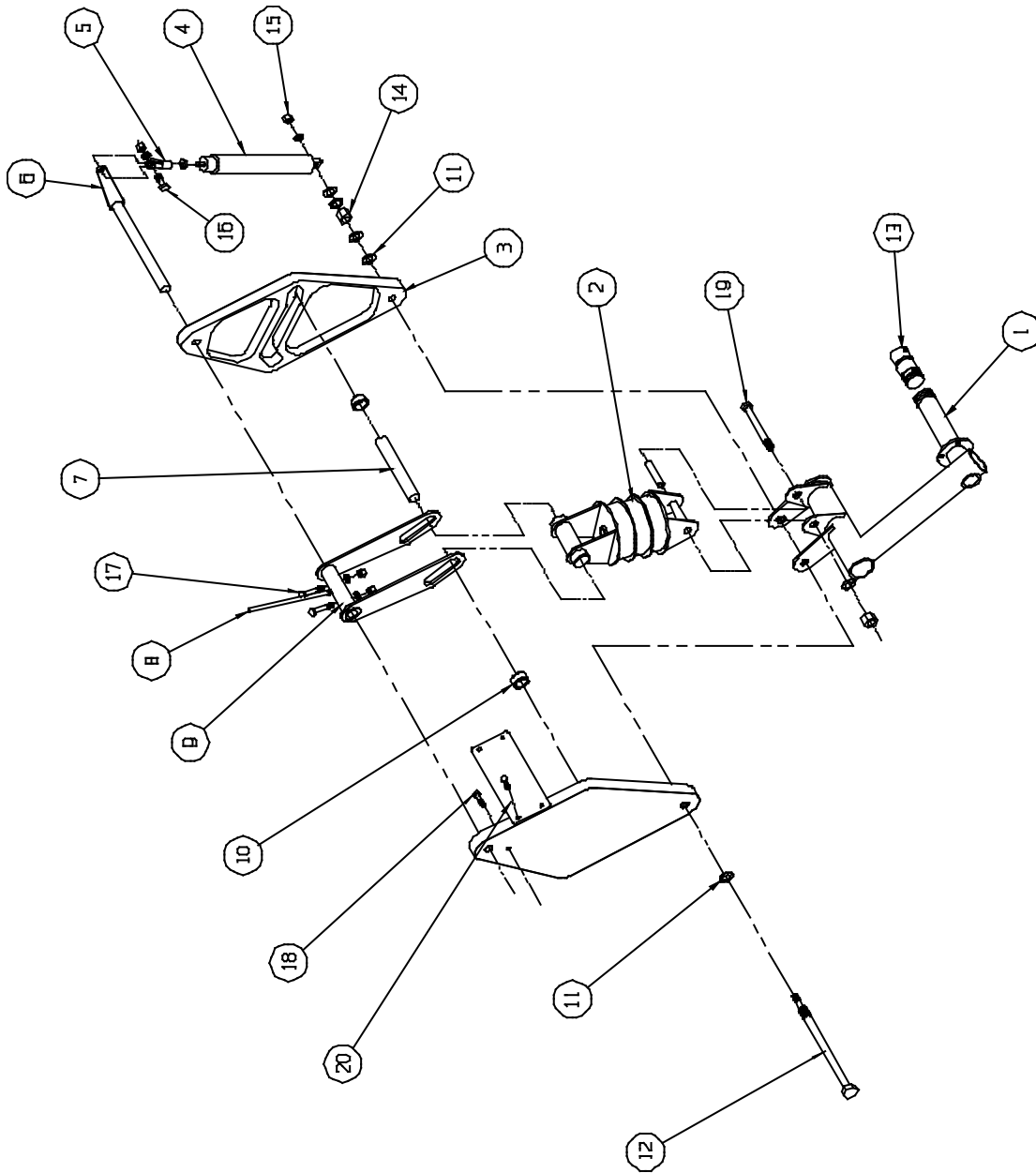
WIPLINE MODEL 2350 FLOAT PARTS MANUAL

ASSEMBLY – NOSE WHEEL, FIGURE 12

<u>REF NO.</u>	<u>NO.</u>	<u>REQ.</u>	<u>PART DESCRIPTION</u>	<u>PART NO.</u>
14	1		TIRE 2.80 X 2.5-4	AD1A2
	1		TUBE 2.80 X 4.00	XA1AA
15	1		WHEEL ASSEMBLY	D-30380
	1		GASKET	068-30373
16	2		SPACER	3A06259-001
17	2		BEARING CONE	4050
			BEARING CONE, CHROME (OPT.)	4050CP
18	2		BEARING CUP	4138
			BEARING CUP, CHROME (OPT.)	4138CP
19	3		BOLT – WHEEL HALF	AN4-7A
	6		WASHER	NAS1149F0432P
	3		NUT	MS21044N4

THIS PAGE BLANK

WIPLINE MODEL 2350 FLOAT PARTS MANUAL



XC

INSTALLATION MAIN GEAR RETRACTION  
FIGURE 13

WIPLINE MODEL 2350 FLOAT PARTS MANUAL

INSTALLATION – MAIN GEAR RETRACTION, FIGURE 13

<u>REF NO.</u>	<u>NO. REQ.</u>	<u>PART DESCRIPTION</u>	<u>PART NO.</u>
1	1	ASS'Y – DRAG LINK L.	21A04000-077
	1	ASS'Y – DRAG LINK R.	21A04000-076
	2	BEARING	08FDU12
2	1	ASS'Y SHOCK STRUT	23A04000-113
	1	ASS'Y – LOWER END	21A04000-075
	1	SLEEVE	21A04585-002
	2	ZERK – GREASE	1095K41
	1	ASS'Y – UPPER END	21A04000-074
	1	DUAL BUSHING ASSEMBLY	1002088
	1	BUSHING ASSEMBLY	1001101
	1	RETAINING PIN	21A04503-004
	1	COTTER PIN	MS24665-151
	2	WASHER	NAS1149F0416J
	2	WASHER	NAS1149F0463J
3	1	TRACK – MAIN GEAR L.	21A05114-005
	1	TRACK – MAIN GEAR R.	21A05114-006
	1	BEARING - UPPER	10DU12
	1	BEARING – LOWER	08DU12
4	1	CYLINDER	1002574
	2	FITTING - ELBOW	MS20822-4D
5	1	ROD END	21A05705-002
	1	JAMB NUT	AN316-5
	1	SPACER	21A05260-005
	1	CHAMFERED WASHER (CHAMFERED EDGE GOES AGAINST CYLINGER)	MS20002C6
6	1	ARM – RETRACT L.	21A05000-017
	1	ARM – RETRACT R.	21A05000-016
7	1	AXLE – SHOCK STRUT	21A04454-006

WIPLINE MODEL 2350 FLOAT PARTS MANUAL

INSTALLATION – MAIN GEAR RETRACTION, FIGURE 13

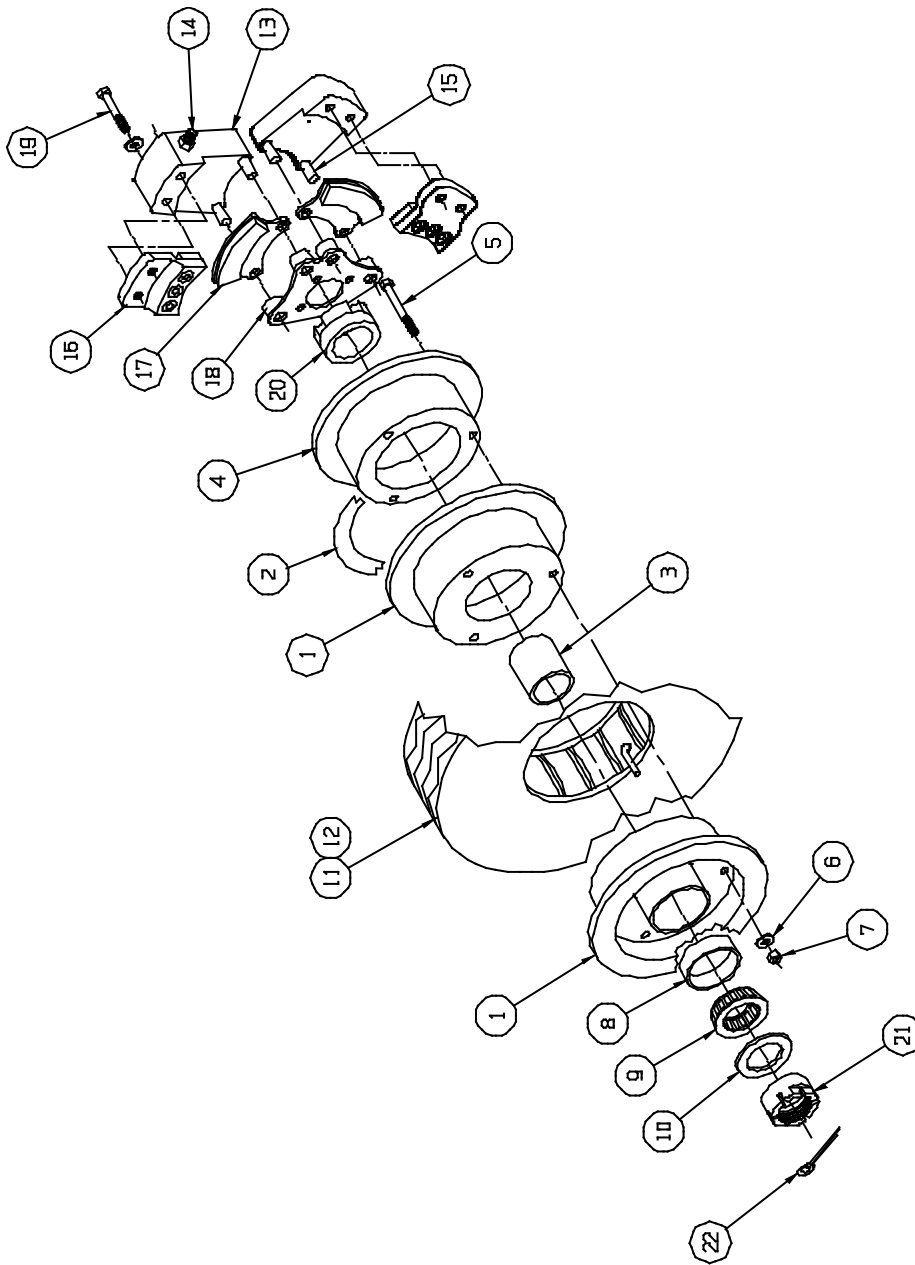
<u>REF NO.</u>	<u>NO. REQ.</u>	<u>PART DESCRIPTION</u>	<u>PART NO.</u>
8	1	INDICTATOR ASS'Y	21A05000-022
9	1	GEAR ACTUATOR	21A05000-018
10	2	ROLLER – TRACK	21A05520-003
11	2	WASHER – SEALING	93783A033
12	1	BOLT – ASSEMBLY	21A05000-019
13	1	RETAINER - GREASE	21A04263-007
	2	“O” RING	MS28775-210
	1	ZERK – GREASE	1095K41
14	1	NUT	MS21044N8
	2	WASHER	NAS1149F0863P
15	1	NUT	MS21083N5
		A/R WASHER	NAS1149F0563P
16	1	BOLT	AN5-11A
	2	WASHER	NAS1149F0563P
	1	NUT	MS21044N5
17	2	BOLT	AN4-13A
	4	WASHER	NAS1149D0416J
	2	NUT	MS21044N4
18	8	BOLT – TRACK ATTACH	AN3-6A
	8	WASHER	NAS1149D0316J
	8	WASHER	NAS1149D0363J
	8	NUT	MS21044N3
19	1	BOLT	AN8-33A
	1	WASHER	NAS1149F0832P

WIPLINE MODEL 2350 FLOAT PARTS MANUAL

INSTALLATION – MAIN GEAR RETRACTION, FIGURE 13

<u>REF NO.</u>	<u>NO. REQ.</u>	<u>PART DESCRIPTION</u>	<u>PART NO.</u>
	1	WASHER	NAS1149F0863P
	1	NUT	MS21044N8
20	1	PLATE - SEPARATING	21A05003-079
	4	BOLT	AN3-5A
	8	WASHER	NAS1149D0316J
	4	NUT	MS21044N3

WIPLINE MODEL 2350 FLOAT PARTS MANUAL



ASSEMBLY MAIN GEAR WHEEL – CLEVELAND/PARKER  
FIGURE 14

WIPLINE MODEL 2350 FLOAT PARTS MANUAL

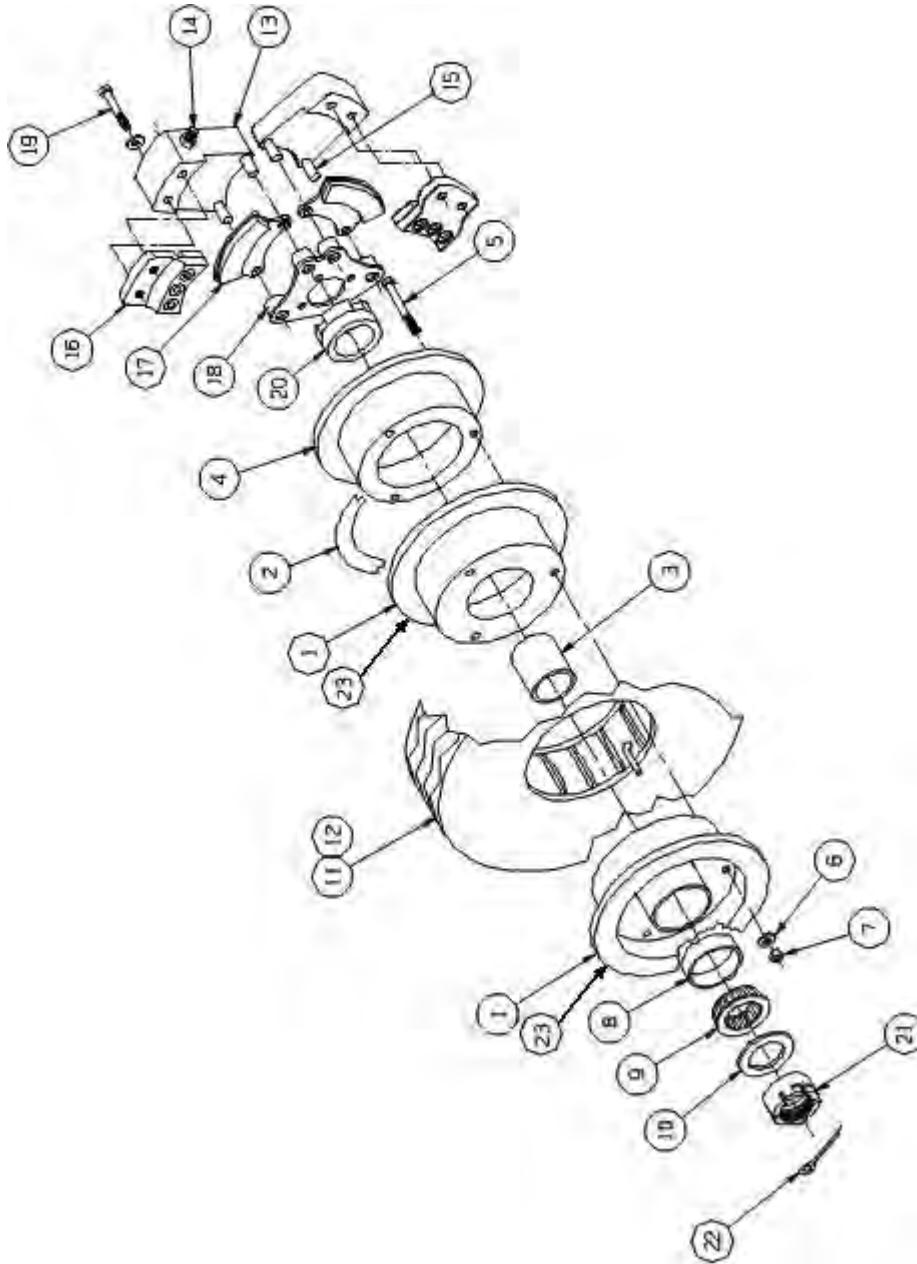
ASSEMBLY – MAIN GEAR WHEEL – CLEVELAND/PARKER - FIGURE 14

<u>REF NO.</u>	<u>NO. REQ.</u>	<u>PART DESCRIPTION</u>	<u>PART NO.</u>
1	1	ASS'Y – WHEEL (W/ TUBE & TIRE)	3A04000-002
	1	ASS'Y - WHEEL	3A04000-060
2	1	GASKET - TEFLON	3A04620-001
3	1	GREASE RETAINER	3A04616-001
4	1	BRAKE DISC	164-01700
5	3	BOLT	AN4-22A
6	3	WASHER	NAS1149F0432P
7	3	NUT	MS21044N4
8	2	BEARING CUP	8231
		BEARING CUP, CHROME (OPT.)	8231CP
9	2	BEARING CONE	8125
		BEARING CONE, CHROME (OPT.)	8125CP
10	2	SEAL - INSIDE/OUTSIDE	473237
11	1	TIRE –TYPE III	500 X 5, 6 PLY
12	1	TUBE	500 X 5
	1	ASS'Y – BRAKE AND TORQUE PLATE	3A04000-052
13	2	ASS'Y – CALIPER	030-00903
	2	PISTON	062-00300
	2	“O” RING	AN6227-23
	2	FITTING - 45 DEGREES (BRAKE LINE)	MS20823-3D
14	2	SEAT – BLEEDER	081-30619
	2	SCREW – BLEEDER	79-3
	2	CAP – BLEEDER	183-1

WIPLINE MODEL 2350 FLOAT PARTS MANUAL

ASSEMBLY – MAIN GEAR WHEEL – CLEVELAND/PARKER - FIGURE 14

<u>REF NO.</u>	<u>NO. REQ.</u>	<u>PART DESCRIPTION</u>	<u>PART NO.</u>
15	4	ANCHOR BOLT	069-00400
	4	WASHER	NAS1149F0463P
	4	NUT	MS21044N4
16	2	ASS'Y – BACK PLATE	074-02700
	2	PLATE – BACK	064-00500
	2	LINING	066-10600
	6	RIVET	105-2
17	2	ASS'Y – PRESSURE PLATE	073-04800
	2	PLATE - PRESSURE	063-00500
	2	LINING	066-10600
	6	RIVET	105-2
18	1	BRAKE TORQUE PLATE - LEFT	23A04000-109
	1	BRAKE TORQUE PLATE – RIGHT	23A04000-110
19	4	BOLT	AN4H15A
	4	WASHER	NAS1149F0432P
20	1	SPACER	3A04093-001
21	1	NUT – AXLE	3A04268-003
22	1	COTTER PIN	MS24665-351



ASSEMBLY – MAIN GEAR WHEEL – GROVE/WIPAIRE  
FIGURE 14A

## WIPLINE MODEL 2350 FLOAT PARTS MANUAL

## ASSEMBLY – MAIN GEAR WHEEL – GROVE/WIPAIRE - FIGURE 14A

<u>REF NO.</u>	<u>NO. REQ.</u>	<u>PART DESCRIPTION</u>	<u>PART NO.</u>
1	1	ASS'Y – WHEEL AND BRAKE (COMPLETE) INCLUDES ALL ITEMS BELOW EXCEPT TIRE & TUBE	21A04000-126
2	1	GASKET - TEFLON	3A04620-004
3	1	GREASE RETAINER	010-009
4	1	BRAKE DISC	018-002
5	3	BOLT	AN4-23A
6	3	WASHER	NAS1149F0432P
7	3	NUT	MS21044N4
8	2	BEARING RACE (CHROME	08131CP
9	2	BEARING CUP	09225CP
10	2	SEAL - INSIDE/OUTSIDE	473237
11	1	TIRE –TYPE III	500 x 5, 6 PLY
12	1	TUBE	500 X 5
13	1	BRAKE ASSEMBLY	32-3
	2	PISTON	017-003
	2	O-RING	MS28775-217
14	1	BLEEDER ASSEMBLY	220-0063
	1	FITTING 45° BRAKE LINE	MS20823-3D
15	2	TORQUE PIN	013-001
	2	NUT	MS21044N4

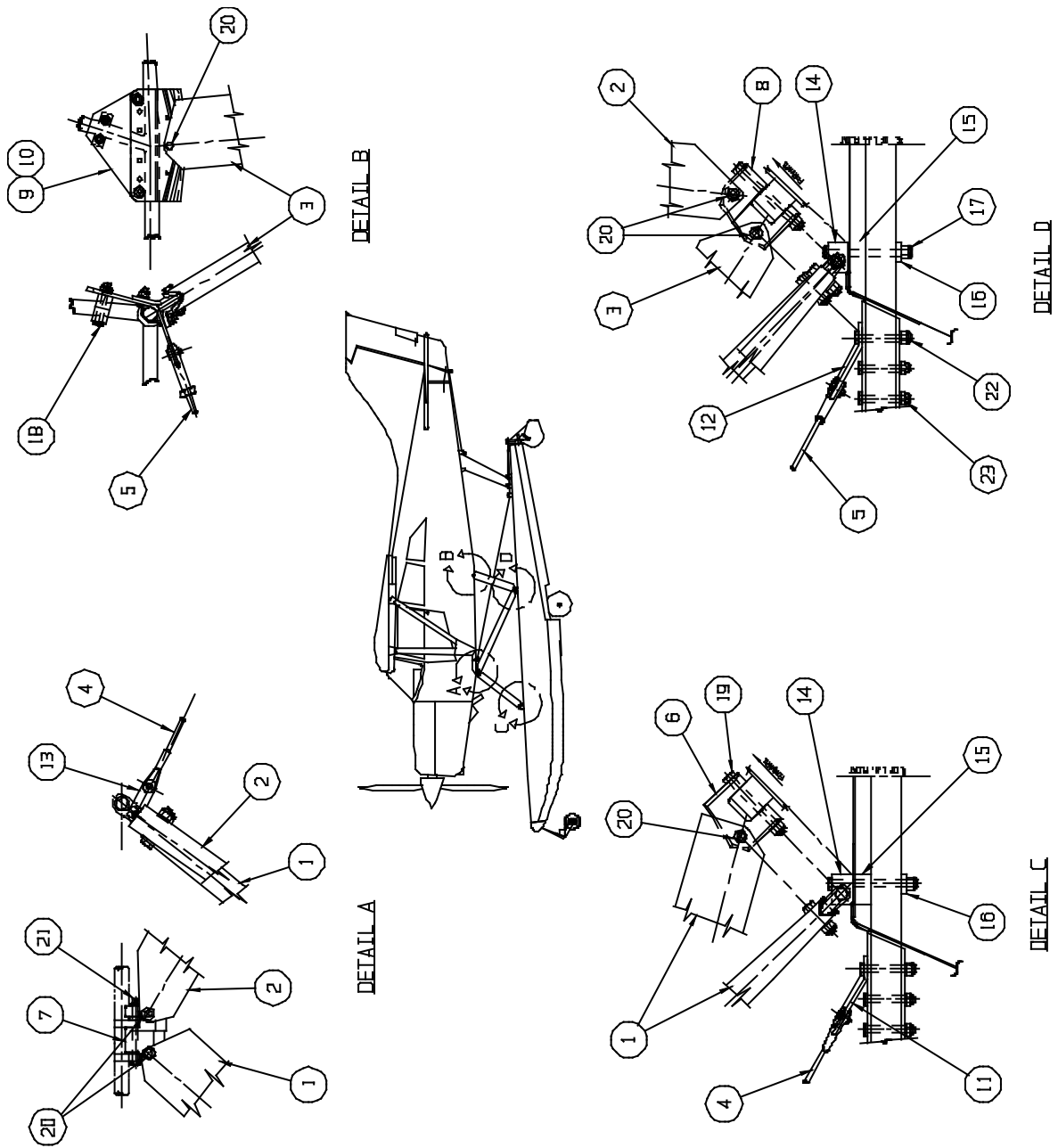
WIPLINE MODEL 2350 FLOAT PARTS MANUAL

ASSEMBLY – MAIN GEAR WHEEL – GROVE/WIPAIRE - FIGURE 14A

<u>REF NO.</u>	<u>NO. REQ.</u>	<u>PART DESCRIPTION</u>	<u>PART NO.</u>
16	1	BACK PLATE ASSEMBLY	10-3
	1	PAD	66-111
	3	RIVET	105-2
17	1	PRESSURE PLATE ASSEMBLY	11-2
	1	LINING	66-111
	3	RIVET	105-2
18	1	BRAKE TORQUE PLATE ASSEMBLY	020-001
19	3	BOLT	AN4H-15A
	3	WASHER	NAS1149F0432P
20	1	SPACER	3A04093-001
21	1	NUT – AXLE	3A04268-003
22	1	COTTER PIN	MS24665-351
23	1	WHEEL HALF-INNER	015-002
	1	WHEEL HALF-OUTER	016-002
		(HALVES NOT SOLD SEPERATELY)	

THIS PAGE BLANK

WIPLINE MODEL 2350 FLOAT PARTS MANUAL



INSTALLATION – STRUTS, WIRES AND SPREADER BARS MAULE  
FIGURE 15

WIPLINE MODEL 2350 FLOAT PARTS MANUAL

INSTALLATION – STRUTS, WIRES, & SPREADER BARS, FIGURE 15 MAULE

<u>REF NO.</u>	<u>NO. REQ.</u>	<u>PART DESCRIPTION</u>	<u>PART NO.</u>
1	2	STRUT - FRONT	23A02000-221
2	2	STRUT – CENTER	23A02000-223
3	2	ASS’Y – STRUT – REAR	23A02000-166
	1	STRUT	23A02334-030
	4	BUSHING	21A02084-001
4	2	ASS’Y – DRAG WIRE – FWD	21A02000-137
	1	WIRE	AN705AC-5225
	1	CLEVIS L.	AN665-46LS *
	1	CLEVIS R.	AN665-46RS *
	1	CHECK NUT “L”	AN316-C5L
	1	CHECK NUT “R”	AN316-C5R
	2	PIN – CLEVIS	SP4ZF6
	2	PIN – COTTER	SP90E7
5	2	ASS’Y – DRAG WIRE – AFT	21A02000-138
	1	WIRE	AN705AC-4525
	1	CLEVIS L.	AN665-80LAS *
	1	CLEVIS R.	AN665-80RAS *
	1	CHECK NUT “L”	AN316-C6L
	1	CHECK NUT “R”	AN316-C6R
	2	PIN – CLEVIS	MS20392-5C21
	2	PIN – COTTER	MS24665-301
6	2	FITTING – LOWER FRONT STRUT	23A02060-005
7	1	FITTING – UPPER FRONT STRUT L.	23A02055-011
	1	FITTING – UPPER FRONT STRUT R.	23A02055-012
8	1	FITTING – LOWER AFT STRUT L.	23A02055-009
	1	FITTING – LOWER AFT STRUT R.	23A02055-010
9	1	ASS’Y – REAR FUSELAGE FITTING L.	30A02000-183
	1	PLATE - MAIN L.	30A02019-015
	1	PLATE – UPPER L.	30A02019-017
	1	PLATE – LOWER L.	30A02019-019
	1	SPACER	23A02020-003

\* “S” DENOTES STAINLESS STEEL

WIPLINE MODEL 2350 FLOAT PARTS MANUAL

INSTALLATION – STRUTS, WIRES, & SPREADER BARS, FIGURE 15 MAULE

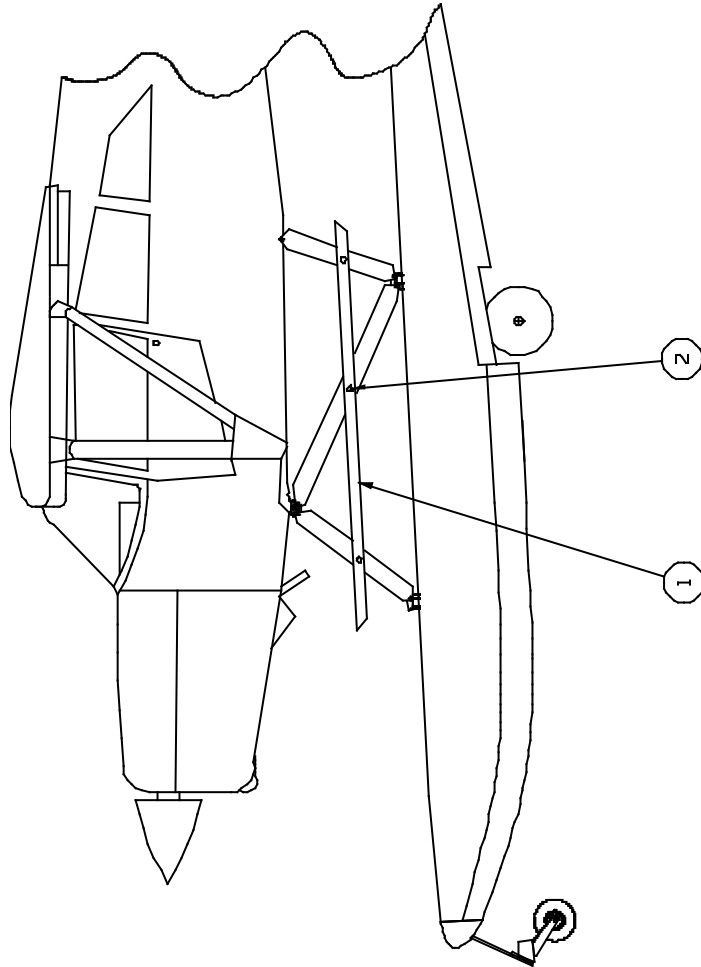
<u>REF NO.</u>	<u>NO. REQ.</u>	<u>PART DESCRIPTION</u>	<u>PART NO.</u>
	2	“U” BOLT	21A02456-001
	2	SADDLE – “U” BOLT	21A02487-002
	4	WASHER	NAS1149D0463J
	4	NUT	MS21044N4
10	1	ASS’Y – REAR FUSELAGE FITTING R.	30A02000-184
	1	PLATE - MAIN R.	30A02019-014
	1	PLATE – UPPER R.	30A02019-016
	1	PLATE – LOWER R.	30A02019-018
	1	SPACER	23A02020-003
	2	“U” BOLT	21A02456-001
	2	SADDLE – “U” BOLT	21A02487-002
	4	WASHER	NAS1149D0463J
	4	NUT	MS21044N4
11	2	WIRE PULL - LOWER FWD.	21A02462-004
12	2	WIRE PULL - LOWER AFT.	21A02462-008
13	2	WIRE PULL - LOWER UPPER.	21A02462-009
14	4	BLOCK – DECK FITTING	21A03032-006
15	4	SPACER	21A03214-003
16	4	SPACER – BEARING	21A03154-007
17	4	BOLT	AN6-42A
18	2	CLAMP – REAR FITTING	30A02195-007
	2	BOLT – ATTACH	AN4-20A
	2	WASHER	NAS1149D0463J
	2	NUT	MS21044N4
19	2	BOLT	AN6-36A
20	12	BOLT	AN6-17A
21	2	BOLT	AN6-41A

WIPLINE MODEL 2350 FLOAT PARTS MANUAL

INSTALLATION – STRUTS, WIRES, & SPREADER BARS, FIGURE 15 MAULE

<u>REF NO.</u>	<u>NO. REQ.</u>	<u>PART DESCRIPTION</u>	<u>PART NO.</u>
22	4	BOLT	AN6-30A
23	8	BOLT	AN5-23A
24	A/R WASHER (ITEM 17,19,20,21, & 22)		NAS1149D0663J
25	24	NUT (ITEM 17,19,20,21, & 22)	MS21044N6
26	A/R WASHER (ITEM 33)		NAS149D0563J
27	8	NUT (ITEM 33)	MS21044N5

WIPLINE MODEL 2350 FLOAT PARTS MANUAL

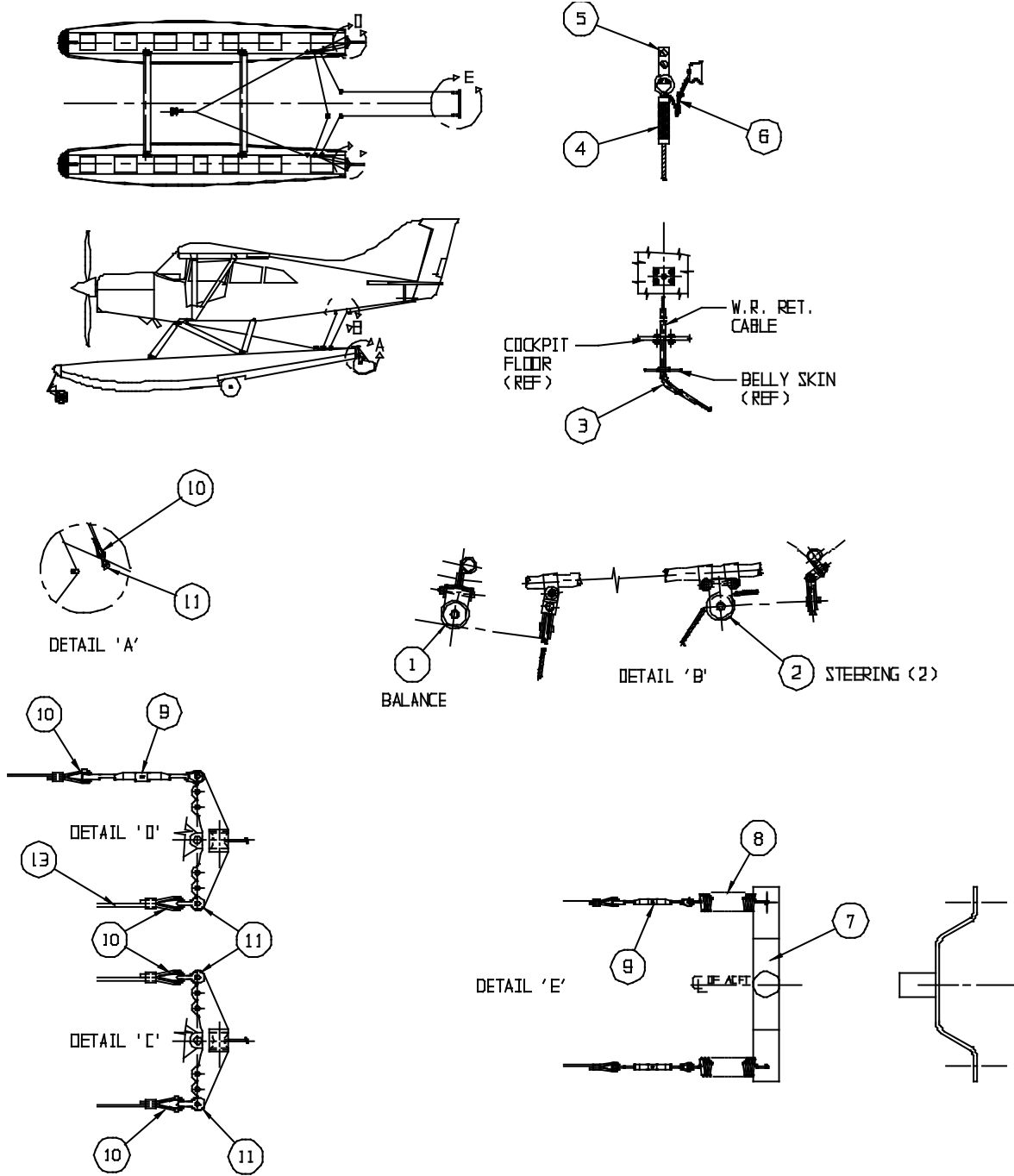


INSTALLATION FUSELAGE STEPS MAULE  
FIGURE 16

WIPLINE MODEL 2350 FLOAT PARTS MANUAL  
 INSTALLATION – FUSELAGE STEPS, FIGURE 16 MAULE

<u>REF NO.</u>	<u>NO. REQ.</u>	<u>PART DESCRIPTION</u>	<u>PART NO.</u>
1	1	STEP – RIGHT	23A02369-036
	1	STEP – LEFT	23A02369-037
	6	BOLT – ATTACH	AN3-17A
	12	WASHER	NAS1149D0363J
	6	NUT	MS21044N3
	6	HOLE PLUG 1 INCH	BPF
	2	1	ASS'Y – VENTRAL FIN
10		RIVNUTS	B8-75
14		PLATENUT	MS21078-08
24		SCREW – ATTACH	AN526-1032R8
24		WASHER	NAS1149D0363J
10		WASHER – LOCK	MS35333-39

WIPLINE MODEL 2350 FLOAT PARTS MANUAL



INSTALLATION – STEERING AND RETRACT SYSTEM MAULE  
FIGURE 17

WIPLINE MODEL 2350 FLOAT PARTS MANUAL

INSTALLATION – STEERING AND RETRACT SYSTEM, FIGURE 17 MAULE

<u>REF NO.</u>	<u>NO. REQ.</u>	<u>PART DESCRIPTION</u>	<u>PART NO.</u>
1	1	ASS'Y – RETRACT HANDLE	21A08000-128
	4	SCREW - ATTACH	AN526-1032R8
	4	WASHER	NAS1149D0363J
	4	NUT	MS21044N3
2	1	PULLEY BRACKET	3A08151-046
	4	SCREW – ATTACH	AN526-1032R8
	4	WASHER	NAS1149D0316J
	4	NUT	MS21044N3
3	1	PULLEY	21A08000-129
	1	BOLT	AN4-7A
	2	WASHER	NAS1149D0463J
	1	NUT	MS21044N4
4	3	ASS'Y – PULLEY BRACKET	21A08000-128
	1	BRACKET	21A08008-150
	1	SPACER - BLOCK	21A08230-002
	1	PULLEY	MS20219-2
	1	BOLT	AN4-7A
	1	WASHER	NAS1149D0363J
	1	NUT	MS21044N3
5	6	EYE BOLT	AN42B4A
	6	WASHER	NAS1149D0363J
	6	NUT	MS21044N3
6	3	BOLT	AN3-17A
	3	WASHER	NAS1149D0363J
	3	NUT	MS21044N3
7	1	EXTENSION – RUDDER HORN	21A08359-201
	2	BOLT – ATTACH	AN3-6A
	2	WASHER	NAS1149D0363J
	2	NUT	MS21044N3

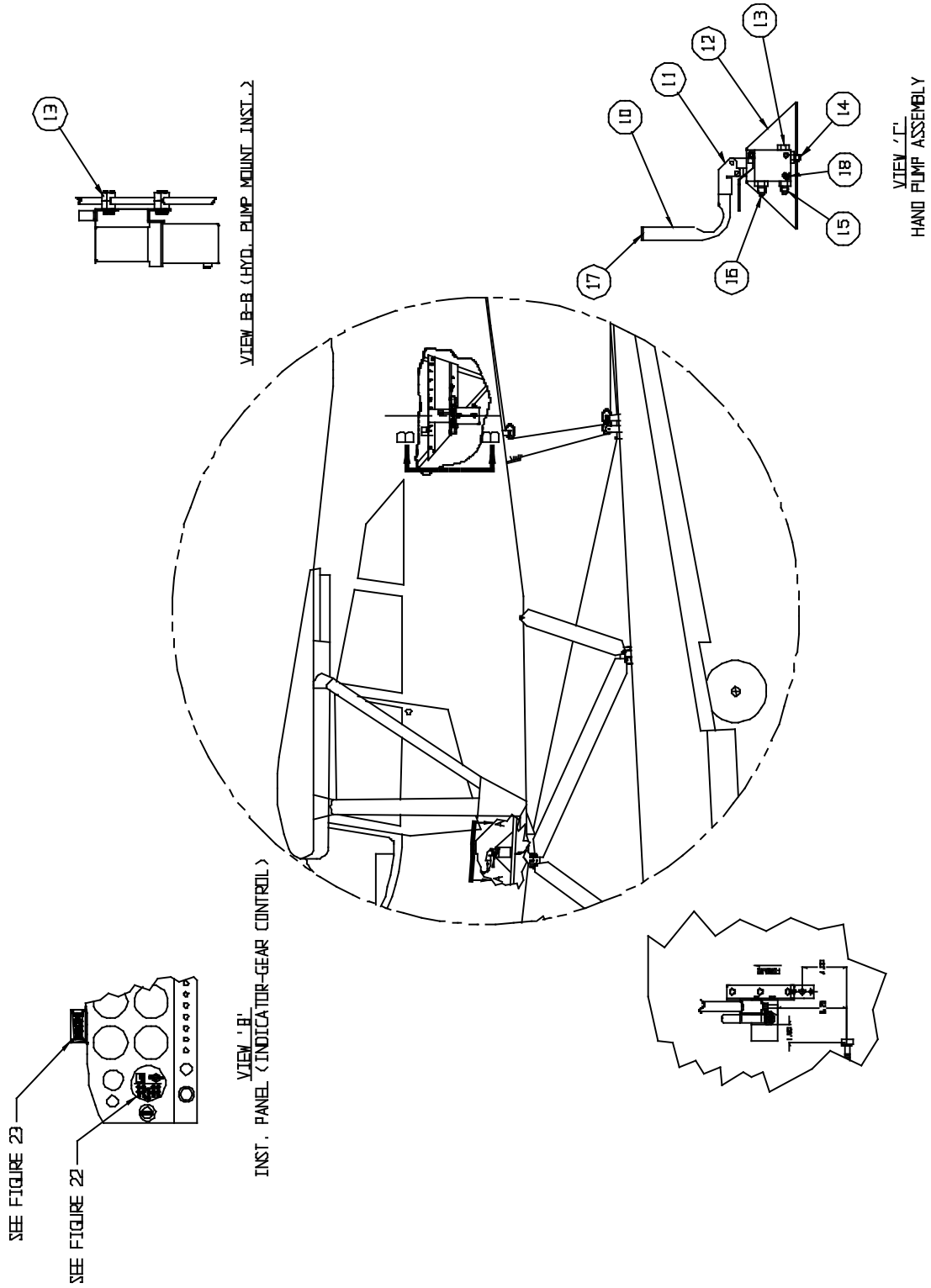
WIPLINE MODEL 2350 FLOAT PARTS MANUAL

INSTALLATION – STEERING AND RETRACT SYSTEM, FIGURE 17 MAULE

<u>REF NO.</u>	<u>NO. REQ.</u>	<u>PART DESCRIPTION</u>	<u>PART NO.</u>
8	2	SPRING	21A08525-005
9	3	TURNBUCKLE – BARREL	MS21251B3S
	3	FORK – TERMINAL	MS21252-3RS
	3	PIN ATTACH	MS20392-2-1
	3	PIN – COTTER	MS24665-132
	3	WASHER	NAS1149D0316J
10	10	THIMBLE – CABLE	AN100-3
	10	NICOPRESS – CLAMP	MS51844-43
11	5	SHACKLE	MS20115-3
	5	PIN – ATTACH	MS20392-2-11
	5	PIN – COTTER	MS24665-132
12		A/R CABLE 3/32 x 7	RM690
13	1	BARREL	MS21251B3S
	1	FORK	MS21252-3RS
14	2	SHACKLE	MS20115-3
	1	PIN – CLEVIS	MS20392-2-19

THIS PAGE BLANK

WIPLINE MODEL 2350 FLOAT PARTS MANUAL



INSTALLATION – HYDRAULIC SYSTEM MAULE  
FIGURE 18

WIPLINE MODEL 2350 FLOAT PARTS MANUAL

INSTALLATION – HYDRAULIC SYSTEM, FIGURE 18 MAULE

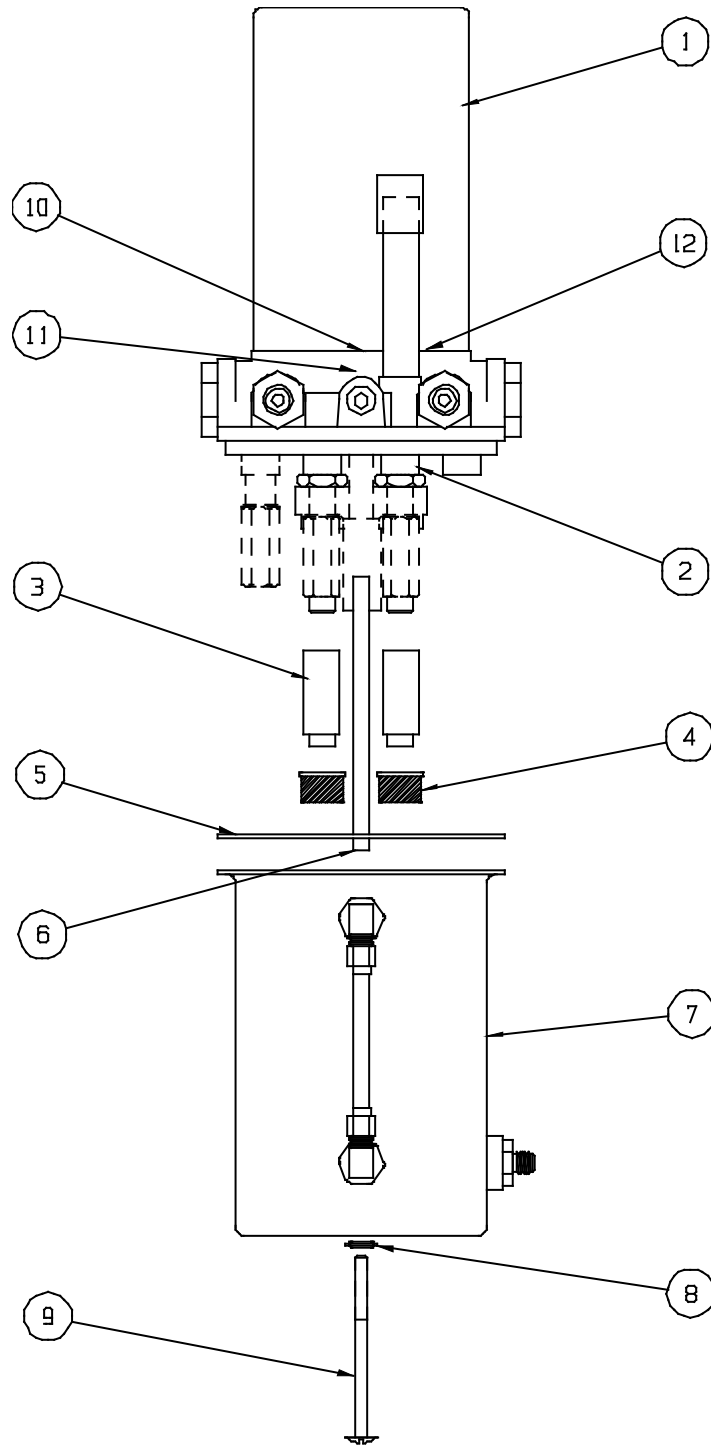
<u>REF NO.</u>	<u>NO. REQ.</u>	<u>PART DESCRIPTION</u>	<u>PART NO.</u>
1	1	ASS'Y - HAND PUMP 12V	21A09000-239
	1	ASS'Y – HAND PUMP 24V	21A09000-261
		SEE FIGURE XX (BREAK DOWN)	
2	1	ASS'Y – MANIFOLD	21A09000-225
	1	MANIFOLD	6A09046-001
	8	NIPPLE – FITTING	AN816-4-4D
	2	BOLT - ATTACH	AN3-5A
	2	WASHER	NAS1149F0363P
	2	NUT	MS21044N3
3	3	UNION - FIREWALL	AN832-4D
	3	WASHER	NAS1149F0763P
	3	NUT	AN924-4D
4	2	BOLT - TOP BRACKET ATTACH	AN3-4A
	4	WASHER	NAS1149D0363J
5	1	ANGLE – LOWER PUMP ATTACH	21A09348-020
	4	BOLT	AN3-4A
	4	WASHER	NAS1149D0363J
	4	NUT	MS21044N3
6	1	ASS'Y – HAND PUMP	21A09000-194
7	1	ASS'Y – PLACARD	10B3-6283-1
8	3	BOLT – ATTACH	AN3-4A
	3	WASHER	AN970-3
	3	WASHER	NAS1149D0363J
	3	NUT	MS21044N3
9	1	GROMMET	MS35489-49
10	1	HANDLE	21A09396-001

WIPLINE MODEL 2350 FLOAT PARTS MANUAL  
 INSTALLATION – HYDRAULIC SYSTEM, FIGURE 18 MAULE

<u>REF NO.</u>	<u>NO. REQ.</u>	<u>PART DESCRIPTION</u>	<u>PART NO.</u>
11	1	HAND PUMP (ONLY)	642873
12	1	BRACKET – PUMP ATTACH	21A09156-129
13	1	PLUG	AN814-4D
	1	“O” RING	MS28775-012
14	1	UNION	21A09746-001
	1	“O” RING	MS28775-012
15	1	UNION	AN815-4D
	1	“O” RING	MS28775-012
16	1	UNION	AN919-6D
	1	“O” RING	MS28775-014
17	1	CAP PLUG	9283K13
18	2	CAP SCREW – ATTACH	MS16997-77
	2	LOCK WASHER	MS35333-40
	2	WASHER	NAS1149F0563P
19	2	ASS’Y – BRAKE LINE (NOT SHOWN)	21A04000-080
	2	FITTING	63-190600-3

THIS PAGE BLANK

WIPLINE MODEL 2350 FLOAT PARTS MANUAL

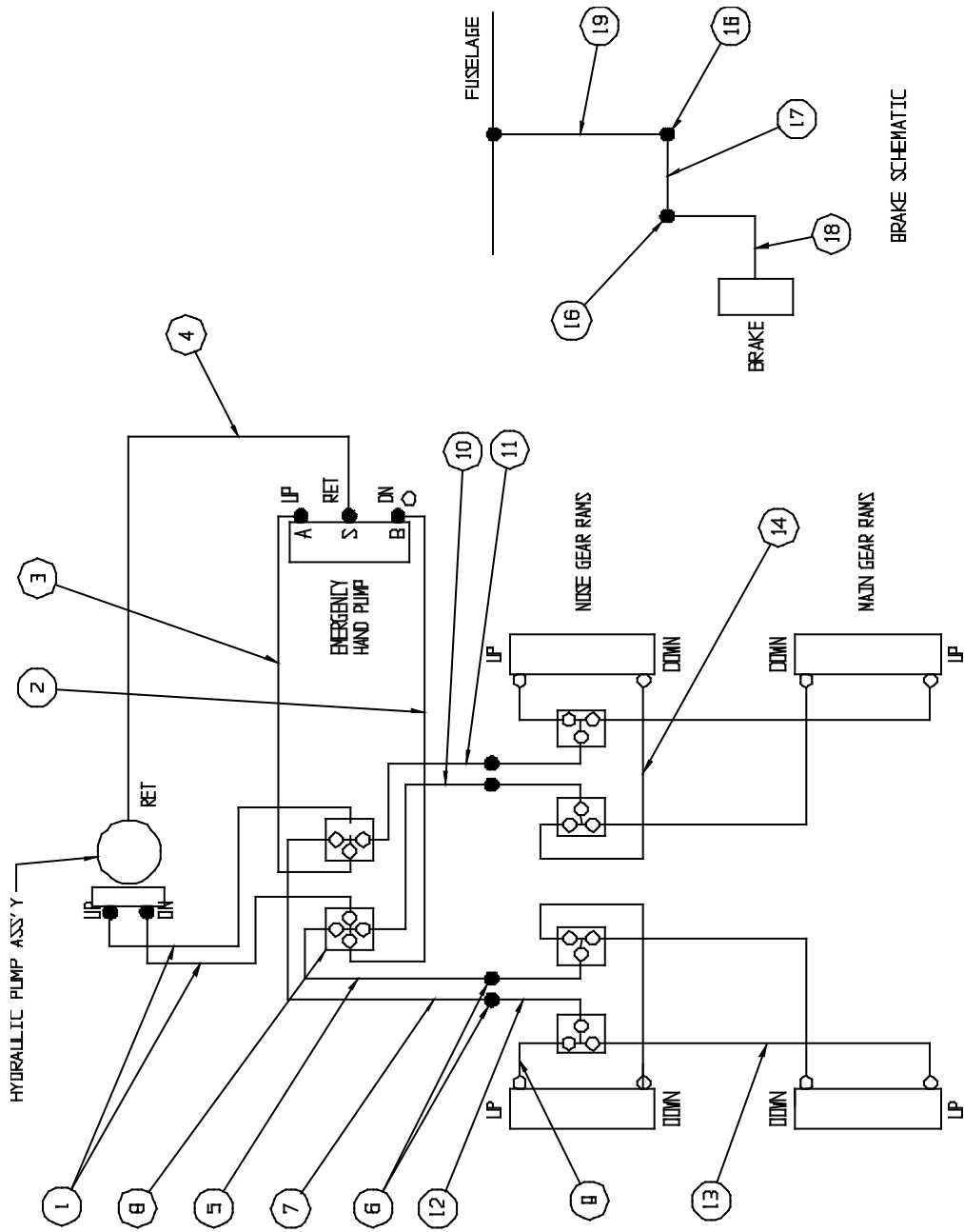


ASSEMBLY – HYDRAULIC PUMP MAULE  
FIGURE 19

WIPLINE MODEL 2350 FLOAT PARTS MANUAL  
ASSEMBLY – HYDRAULIC PUMP, FIGURE 19 MAULE

<u>REF NO.</u>	<u>NO. REQ.</u>	<u>PART DESCRIPTION</u>	<u>PART NO.</u>
FIGURE			
24	1	HYDRAULIC PUMP ASS'Y (12V)	21A09000-215
		HYDRAULIC PUMP ASS'Y (24V)	21A09000-282
		MOTOR (12V)	640661
		MOTOR (24V)	641131
2	1	BASIC PUMP	634873
3	2	TUBE EXTENSIONS	362136
4	2	FILTER	410521
5	1	SEAL RESERVIOR	410578
6	1	RETURN TUBE	365047
7	1	RESERVIOR – GAUGE ASS'Y	775260
8	1	SEAL THREAD	359071
9	1	SCREW – RESERVIOR ATTACH	409715
10	1	COUPLING – MOTOR TO PUMP	361183
11	1	SEAL – PUMP SHAFT	410512
12	1	“O” RING MOTOR TO BASE	405673

WIPLINE MODEL 2350 FLOAT PARTS MANUAL



HYDRAULIC SCHEMATIC  
FIGURE 20

WIPLINE MODEL 2350 FLOAT PARTS MANUAL

HYDRAULIC SCHEMATIC, FIGURE 20

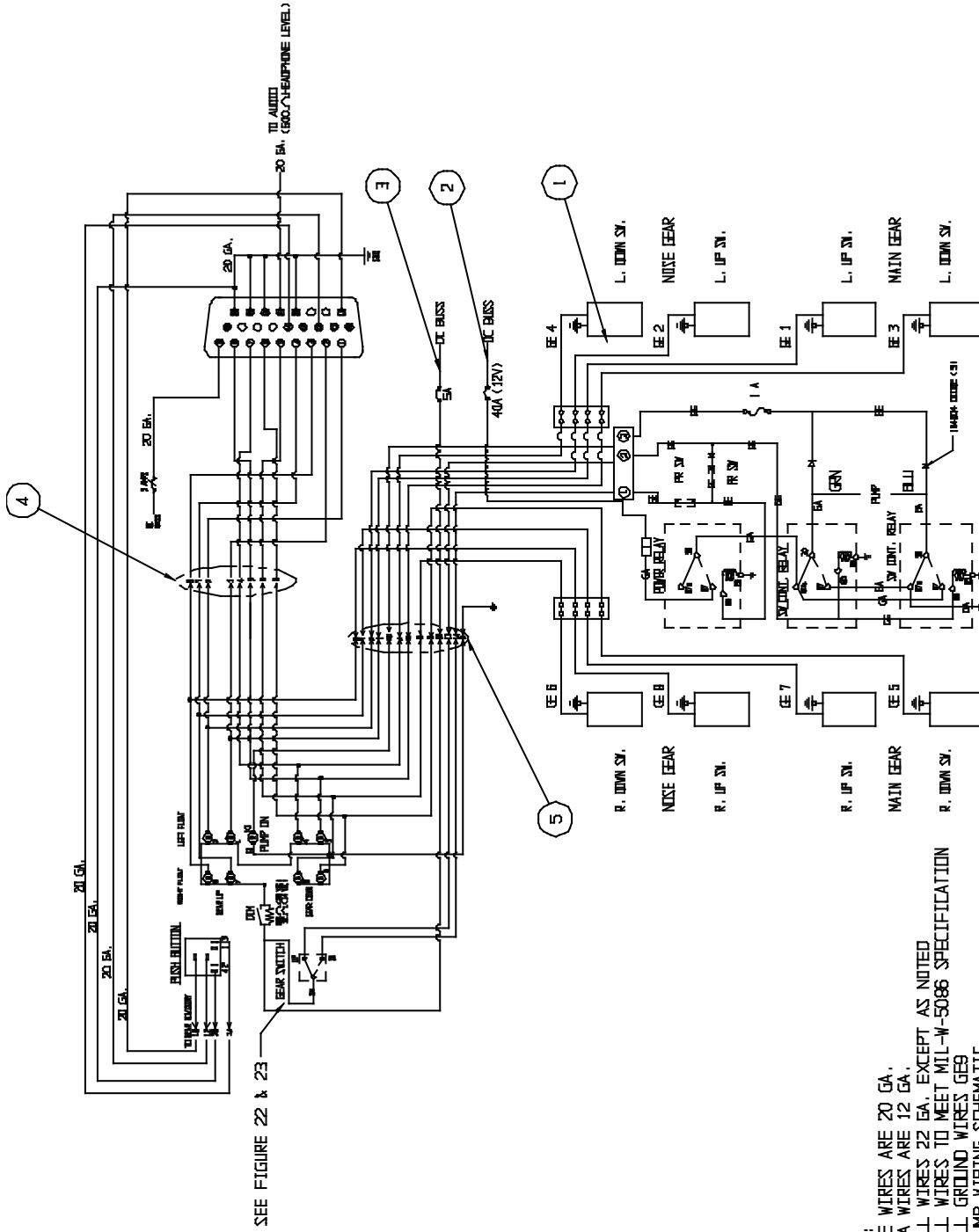
<u>REF NO.</u>	<u>NO. REQ.</u>	<u>PART DESCRIPTION</u>	<u>PART NO.</u>
1	2	ASS'Y – HYDRAULIC HOSE	21A09000-204
2	1	ASS'Y – HYDRAULIC HOSE	21A09000-223
3	1	ASS'Y – HYDRAULIC HOSE	21A09000-207
4	1	ASS'Y – HYDRAULIC HOSE	21A09000-208
5	1	ASS'Y – HYDRAULIC HOSE	21A09000-263
6	2	FITTING – ELBOW	AN833-4D
	2	NUT	AN924-4D
	2	WASHER	NAS1149D0763J
7	2	ASS'Y – HYDRAULIC HOSE	21A09000-262
8	2	FITTING - QUAD	AN827-4D
9	2	ASS'Y – HYDRAULIC HOSE	21A09000-218
10	2	ASS'Y – HYDRAULIC HOSE	21A09000-262
11	2	ASS'Y – HYDRAULIC HOSE	21A09000-263
12	2	ASS'Y – HYDRAULIC HOSE	21A09000-222
13	2	ASS'Y – HYDRAULIC HOSE	21A09000-220
14	1	ASS'Y – HYD HOSE	21A09000-219
15		NOT USED	
16	2	FITTING – ELBOW	AN833-3D
	4	WASHER	NAS1149D0663J
	2	NUT	AN924-3D

WIPLINE MODEL 2350 FLOAT PARTS MANUAL

HYDRAULIC SCHEMATIC, FIGURE 20

<u>REF</u> <u>NO.</u>	<u>NO.</u> <u>REQ.</u>	<u>PART DESCRIPTION</u>	<u>PART NO.</u>
17	2	LINE ASS'Y – HARD	21A04000-079
18	2	LINE ASS'Y – FLEX	21A04000-078
19	2	ASS'Y HYD HOSE	21A09000-080
	2	FITTING - END	63-190600-3

WIPLINE MODEL 2350 FLOAT PARTS MANUAL



ELECTRICAL SCHEMATIC  
FIGURE 21

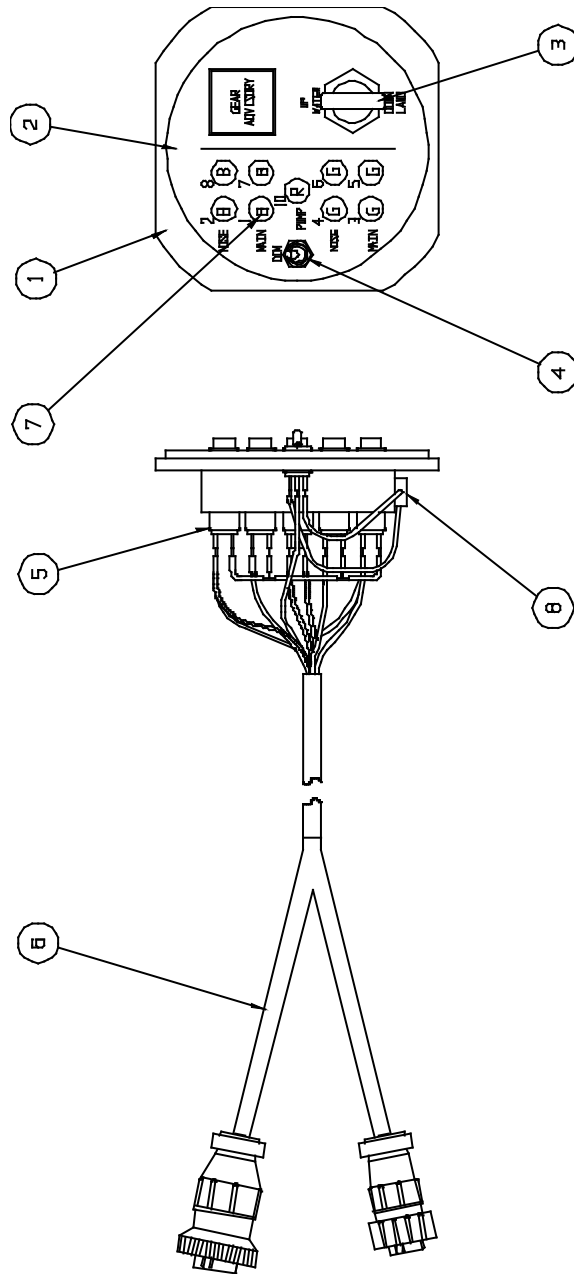
NOTES:  
 1. 12 WIRES ARE 20 GA.,  
 12 WIRES ARE 12 GA.,  
 ALL WIRES 22 GA. EXCEPT AS NOTED  
 ALL WIRES TO MEET MIL-W-5086 SPECIFICATION  
 2. ALL GROUND WIRES GEB  
 3. PUMP WIRING SCHEMATIC  
 (RELAYS SHOWN IN RELAXED CONDITION)

WIPLINE MODEL 2350 FLOAT PARTS MANUAL

ELECTRICAL SCHEMATIC, FIGURE 21

<u>REF NO.</u>	<u>NO. REQ.</u>	<u>PART DESCRIPTION</u>	<u>PART NO.</u>
1	8	SWITCH – PROXIMITY - MAGNETIC	5801
	8	CLIP – SWITCH HOLDER	21A09005-262
2	1	CIRCUIT BREAKER	W23-X1A1G-40
3	1	CIRCUIT BREAKER	7277-2-5
4	1	WIRE HARNESS	4A11000-014
5	1	WIRE HARNESS	4A11000-011

WIPLINE MODEL 2350 FLOAT PARTS MANUAL



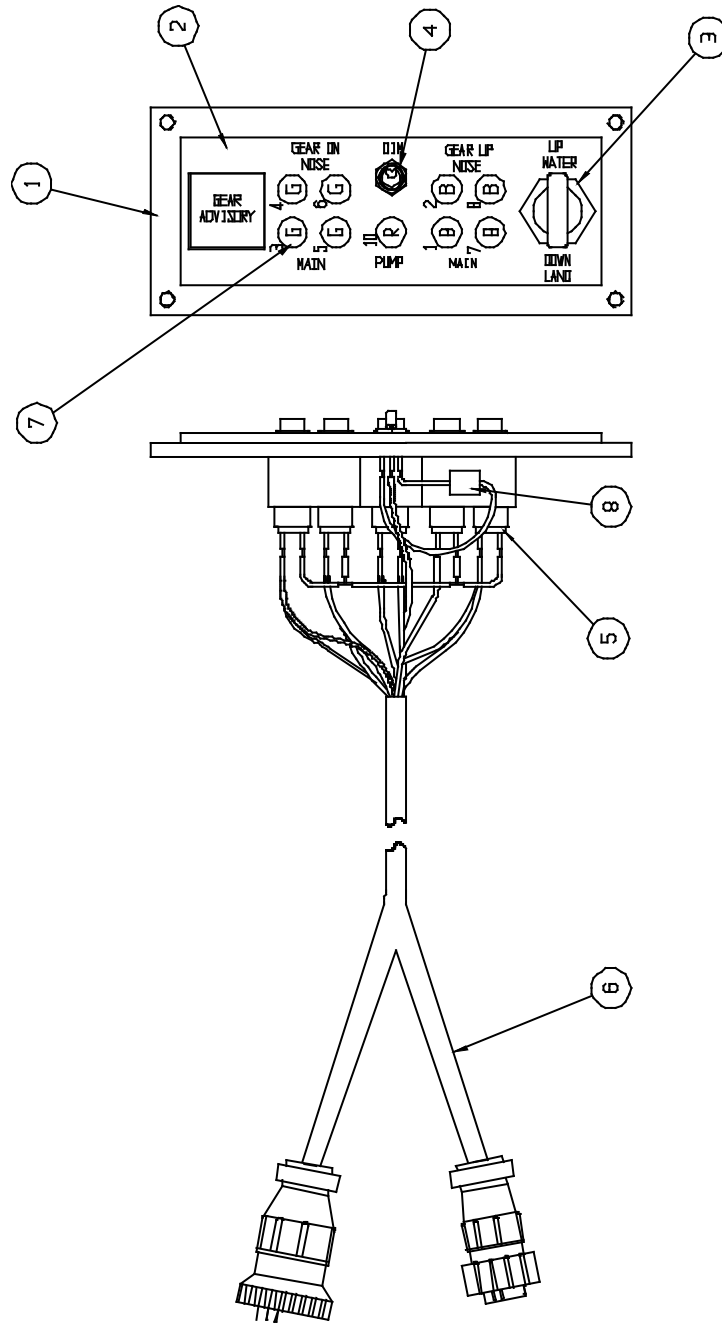
GEAR CONTROL (ROUND)  
FIGURE 22

WIPLINE MODEL 2350 FLOAT PARTS MANUAL

GEAR CONTROL (ROUND), FIGURE 22

<u>REF NO.</u>	<u>NO. REQ.</u>	<u>PART DESCRIPTION</u>	<u>PART NO.</u>
1	1	BLOCK – INDICATOR (ROUND)	21A11179-001
	1	GEAR CONTROL ASS'Y	21A11000-009
2	1	PLACARD – FACE	10B3-6202
3	1	SWITCH – ASSEMBLY	8857K44
	1	KNOB – GEAR CONTROL	21A11259-003
4	1	SWITCH – DIMMER	A101SYCB
5	9	SOCKETS	515-0012
	3	SCREW – ATTACH	AN526-632R8
6	1	ASS'Y – WIRE HARNESS	4A11000-008
7	1	LIGHT – RED (12V)	5073914-1431-600
	4	LIGHT – BLUE (12V)	5073914-1434-600
	4	LIGHT – GREEN (12V)	5073914-1432-600
8	1	RESISTOR (12V)	RH-5-35

WIPLINE MODEL 2350 FLOAT PARTS MANUAL



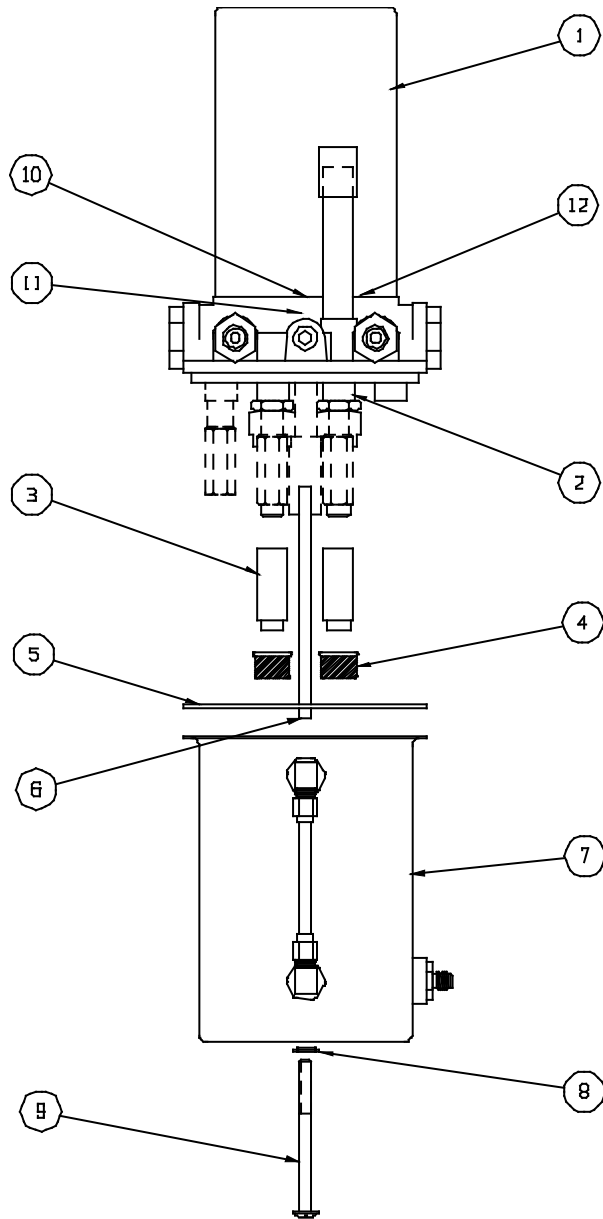
GEAR CONTROL (RECTANGLE)  
FIGURE 23

WIPLINE MODEL 2350 FLOAT PARTS MANUAL

GEAR CONTROL (RECTANGLE), FIGURE 23

<u>REF NO.</u>	<u>NO. REQ.</u>	<u>PART DESCRIPTION</u>	<u>PART NO.</u>
1	1	BLOCK – INDICATOR (RECTANGLE)	21A11179-002
	1	GEAR CONTROL ASS'Y	21A11000-010
2	1	PLACARD – FACE	10B3-6277
3	1	SWITCH – ASSEMBLY	8857K44
	1	KNOB – GEAR CONTROL	21A11259-003
4	1	SWITCH – DIMMER	A101SYCB
5	9	SOCKETS	515-0012
	3	SCREW – ATTACH	AN526-632R8
6	1	ASS'Y – WIRE HARNESS	4A11000-008
7	1	LIGHT – RED (12V)	5073914-1431-600
	4	LIGHT – BLUE (12V)	5073914-1434-600
	4	LIGHT – GREEN (12V)	5073914-1432-600
8	1	RESISTOR (12V)	RH-5-35

WIPLINE MODEL 2350 FLOAT PARTS MANUAL



HYDRAULIC PUMP  
FIGURE 24

WIPLINE MODEL 2350 FLOAT PARTS MANUAL

HYDRAULIC PUMP, FIGURE 24

<u>REF NO.</u>	<u>NO.</u>	<u>REQ.</u>	<u>PART DESCRIPTION</u>	<u>PART NO.</u>
1	1		HYDRAULIC PUMP ASS'Y (12V)	21A09000-215
			HYDRAULIC PUMP ASS'Y (24V)	21A09000-282
			MOTOR (12V)	410497
			MOTOR (24V)	411165
2	1		BASIC PUMP	634873
3	2		TUBE EXTENSIONS	362136
4	2		FILTER	410521
5	1		SEAL RESERVIOR	410578
6	1		RETURN TUBE	365047
7	1		RESERVIOR – GAUGE ASS'Y	775260
8	1		SEAL THREAD	359071
9	1		SCREW – RESERVIOR ATTACH	409715
10	1		COUPLING – MOTOR TO PUMP	361183
11	1		SEAL – PUMP SHAFT	410512
12	1		“O” RING MOTOR TO BASE	405673

