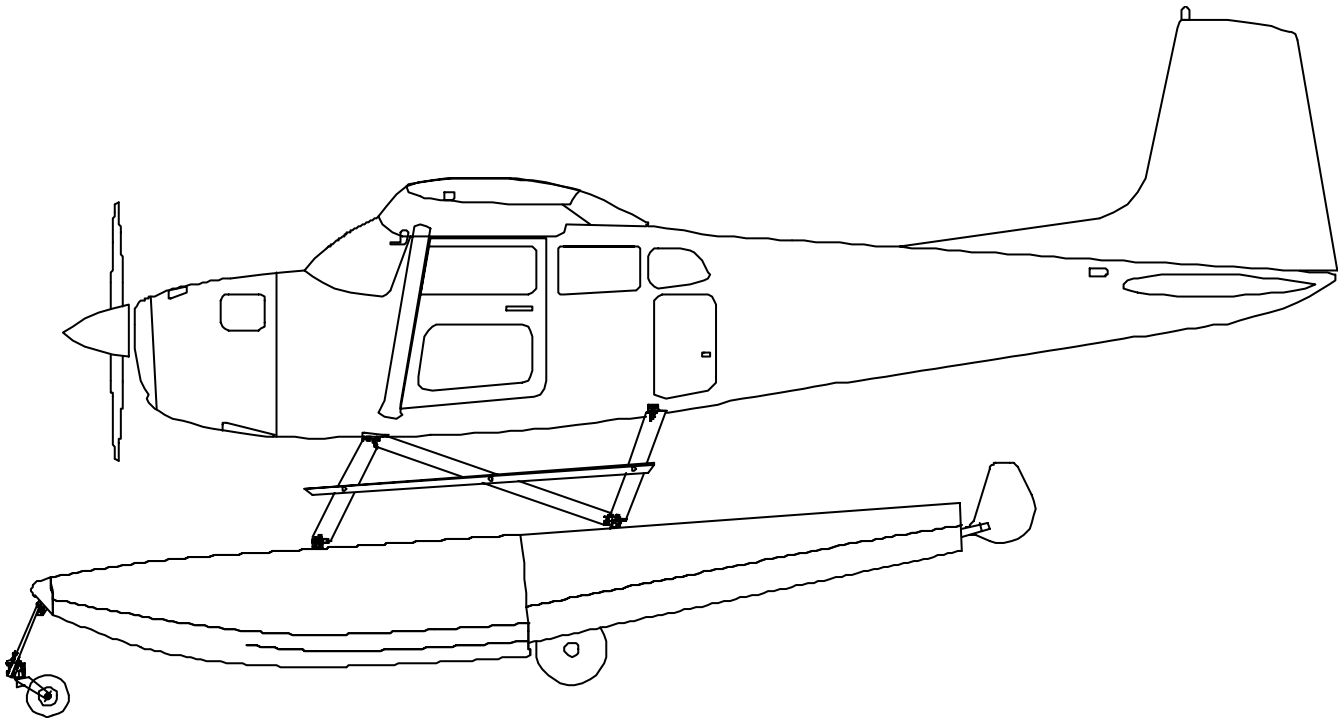


**WIPLINE FLOATS**  
**MODEL 3000**  
**PARTS MANUAL**  
**CESSNA 180-185**



**WIPAIRE, INC.**

**1700 HENRY AVE**

**SOUTH ST. PAUL**

**MINNESOTA 55075**

**U.S.A.**

# WIPLINE MODEL 3000 FLOAT PARTS MANUAL

## TABLE OF CONTENTS

<u>SECTION</u>	<u>PAGE</u>
<i>FLOAT PART SALES DEPT. OPERATIONS</i> .....	4
HULL ASSEMBLY – AMPHIBIAN.....	6
HULL ASSEMBLY – SEAPLANE.....	13
TOP SKIN – HULL – AMPHIBIAN .....	20
TOP SKIN – HULL – SEAPLANE.....	23
WHEELWELL – ASSEMBLY - AMPHIBIAN .....	26
EXTRUSIONS – HULL – AMPHIBIAN .....	29
EXTRUSIONS – HULL – SEAPLANE .....	31
PUMPER TUBE INSTALLATION.....	33
INSTALLATION WATER RUDDER.....	35
ASSEMBLY – NOSE GEAR RETRACTION.....	38
ASSEMBLY – NOSE GEAR – LOWER.....	41
ASSEMBLY - NOSE GEAR.....	43
MAIN GEAR INSTALLATION.....	45
MAIN GEAR RETRACTION.....	47
MAIN GEAR HYDRAULIC INSTALLATION .....	50
ASSEMBLY – MAIN GEAR WHEEL.....	52
INSTALLATION – STRUTS, WIRES AND SPREADER BARS.....	55
INSTALLATION – STEERING AND RETRACT SYSTEM .....	60
ASSEMBLY - RETRACT HANDLE .....	63
INSTALLATION – HYDRAULIC SYSTEM.....	65
ASSEMBLY – HYDRAULIC PUMP.....	68
INSTALLATION STEPS.....	70
HYDRAULIC SCHEMATIC – PUMP .....	72
ELECTRICAL SCHEMATIC.....	75
GEAR CONTROL (ROUND).....	77
GEAR CONTROL (RECTANGLE) .....	79
HYDRAULIC PUMP .....	81
PLACARDS AND MISC DATA CESSNA 180/185.....	85
SERVICE KIT 66 PART INFORMATION.....	84



FLOAT PART SALES DEPT. OPERATIONS

Hours: 8:30 AM - 5:00 PM, Monday through Friday  
Central U.S. Time  
Phone: 651-286-7014  
Fax: 651-306-0666

SHIPPING SCHEDULE:

Orders received before noon (central time) will be shipped the same day.

\* A fee of \$25.00 (US) will be charged for AOG / Special Priority Handling \*

As we are primarily a manufacturer, our stocks can be rapidly depleted by production requirements. Therefore, prices and availability are subject to change at any time. It is our intent to provide courteous and prompt service of your needs. Please let us know of any problems or concerns so that changes in these procedures can be a benefit for all.

A. PARTS ORDERING

Purchase orders should include:

- 1) P.O. Number
- 2) Name of person placing order
- 3) Invoicing information:
  - a) Customer name - company or individual
  - b) Address
  - c) Phone and fax number
- 4) Shipping information:
  - a) Address (if different from invoice address)
  - b) Method of shipment/preferred carrier
- 5) Aircraft model, float model and serial numbers
- 6) Wipaire part number; name; type, e.g. left or right; quantity
- 7) Payment method: VISA, MasterCard, COD (U.S. customers only),  
Pre-payment by check or wire transfer, open account (see E.)

B. \*DAMAGED GOODS\*

Inspect all parts upon receipt. Damages to parts in transit must be filed as a claim against the carrier.

C. RETURNED PARTS

Written explanation of reason for return must accompany parts, including invoice number of original shipment. Shipping charges on returned parts must be prepaid or the shipment will be refused.

D. ORDER SHORTAGES

Check shipment against delivery slip immediately. All claims for any shortages should be made within three (3) days after order receipt.

E. CREDIT POLICY

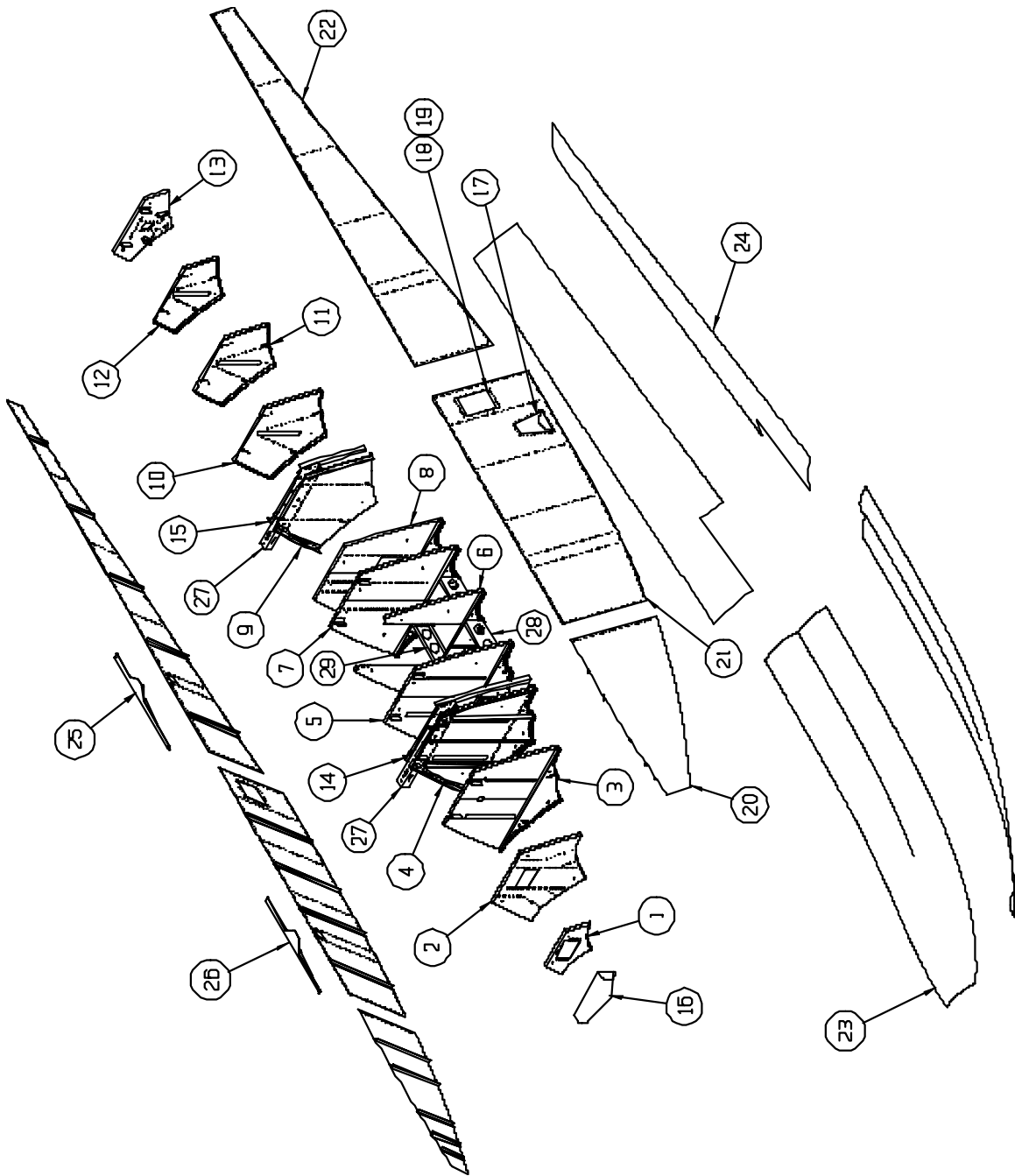
Parts will be shipped on open account, net 30 days, to Wipaire-approved credit customers only. A balance due over 60 days will result in no shipments. Wipaire, Inc reserves the right to send any order C.O.D.

All references in this manual to LEFT and RIGHT are from the perspective of the pilot's seat with the floats fully installed and ready for floatplane operation.

The following is a list of abbreviations that may appear in the description nomenclature fields of this manual.

AB	Afterbody	Inbd.	Inboard
Amphib.	Amphibious	Lg.	Large.
AR	As Required	Lt.	Left
Assy.	Assembly	Lwr.	Lower
Brkt.	Bracket	Opt.	Optional
Btm.	Bottom	Otbd.	Outboard
Bulk.	Bulkhead	Reinf.	Reinforcement
Ctr.	Center	Rr.	Rear
Cyl.	Cylinder	Rt.	Right
Ft.	Front	Sm.	Small
Ftg.	Fitting	SN	Serial Number
Fus.	Fuselage	Spr.	Spreader
Fwd.	Forward	Upr.	Upper
Horiz.	Horizontal	Vert.	Vertical
Hyd.	Hydraulic	W.W.	Wheel Well

WIPLINE MODEL 3000 FLOAT PARTS MANUAL



HULL ASSEMBLY – AMPHIBIAN  
FIGURE 1

WIPLINE MODEL 3000 FLOAT PARTS MANUAL

HULL ASSEMBLY - AMPHIBIAN, FIGURE 1

<u>REF NO.</u>	<u>NO.</u>	<u>REQ.</u>	<u>PART DESCRIPTION</u>	<u>PART NO.</u>
1	1		ASS'Y - BULKHEAD #1	30A01000-329
	1		BULKHEAD MAIN	30A01155-029
	8		NUT PLATES	MS21078-4
2	1		ASSY BULKHEAD #3	30A01000-330
	1		BULKHEAD - MAIN	30A01158-208
	1		ANGLE – NOSE BOX ATTACH	30A01326-020
	1		ANGLE – NOSE BOX ATTACH	30A01326-021
	1		ANGLE – BEND L.	30A01359-211
	1		ANGLE – BEND R.	30A01359-212
	1		ANGLE – SHORT L.	30A01359-213
	1		ANGLE – SHORT R.	30A01359-214
	2		SHIM – ANGLE	30A01163-072
3	1		ASSY BULKHEAD #4	30A01000-331
	1		BULKHEAD – MAIN L.	30A01158-209
	1		BULKHEAD – MAIN R.	30A01158-210
	1		SUPPORT – BULKHEAD LOWER	30A01158-222
	1		ANGLE L.	30A01359-223
	1		ANGLE R.	30A01359-224
	2		ANGLE	6A01359-004
	4	1		ASSY BULKHEAD #5
1			BULKHEAD - MAIN L.	30A01158-211
1			BULKHEAD - MAIN R.	30A01158-212
1			ANGLE – SIDE L.	30A01352-037
1			ANGLE – SIDE R.	30A01352-038
1			PANEL – SPR. BAR	30A01155-032
1			SUPPORT – BULKHEAD LOWER	30A01158-223
1			ANGLE L.	30A01359-221
1			ANGLE R.	30A01359-222
2			ANGLE	6A01359-004
5	1		ASSY BULKHEAD #6	30A01000-332
	1		BULKHEAD – MAIN L.	30A01158-213

WIPLINE MODEL 3000 FLOAT PARTS MANUAL

HULL ASSEMBLY - AMPHIBIAN, FIGURE 1

<u>REF NO.</u>	<u>NO.</u>	<u>REQ.</u>	<u>PART DESCRIPTION</u>	<u>PART NO.</u>
	1		BULKHEAD – MAIN R.	30A01158-214
	1		SUPPORT – BULKHEAD LOWER	30A01158-224
	6		ANGLE	6A01359-004
6	1		ASSY BULKHEAD #7 L.	30A01000-333
	1		BULKHEAD – MAIN L.	30A01158-215
	1		BULKHEAD – MAIN R.	30A01158-216
	1		SUPPORT – BULKHEAD LOWER	30A01158-225
	4		ANGLE	6A01359-004
	1		BAGGAGE FLOOR	34A01008-116
7	1		ASS'Y – BULKHEAD #8 L	30A01000-335
	1		BULKHEAD – MAIN L.	30A01158-217
	1		BULKHEAD – MAIN R.	30A01158-229
	1		SUPPORT – BULKHEAD LOWER	30A01158-227
	6		ANGLE	6A01359-004
	1		ASSY BULKHEAD #8 R	30A01000-334
	1		BULKHEAD – MAIN L.	30A01158-218
	1		BULKHEAD – MAIN R.	30A01158-228
	1		SUPPORT – BULKHEAD LOWER	30A01158-226
	6		ANGLE	6A01359-004
8	1		ASS'Y – BULKHEAD #9 L	30A01000-337
	1		BULKHEAD – MAIN L.	30A01158-219
	1		BULKHEAD – MAIN R.	30A01158-233
	1		SUPPORT – BULKHEAD LOWER	30A01158-231
	4		ANGLE	6A01359-004
	1		ASSY BULKHEAD #9 R	30A01000-338
	1		BULKHEAD – MAIN L.	30A01158-220
	1		BULKHEAD – MAIN R.	30A01158-232
	1		SUPPORT – BULKHEAD LOWER	30A01158-230
	4		ANGLE	6A01359-004
9	1		ASS'Y - BULKHEAD #10	30A01000-339
	1		BULKHEAD – MAIN	30A01158-221

WIPLINE MODEL 3000 FLOAT PARTS MANUAL

HULL ASSEMBLY - AMPHIBIAN, FIGURE 1

<u>REF NO.</u>	<u>NO.</u>	<u>REQ.</u>	<u>PART DESCRIPTION</u>	<u>PART NO.</u>
	1		ANGLE – SIDE L.	30A01352-035
	1		ANGLE – SIDE R.	30A01352-036
	1		PANEL – SPR. BAR	30A01155-032
	2		ANGLE	6A01359-004
10	1		ASS'Y – BULKHEAD #11	30A01000-340
	1		BULKHEAD – MAIN	30A01158-204
	1		ANGLE L.	30A01359-217
	1		ANGLE R.	30A01359-216
	2		ANGLE	6A01359-004
11	1		BULKHEAD #12	30A01000-341
	1		BULKHEAD – MAIN	30A01158-205
	1		ANGLE L.	30A01359-217
	1		ANGLE R.	30A01359-216
	2		ANGLE	6A01359-004
12	1		ASS'Y BULKHEAD #13	30A01000-342
	1		BULKHEAD - MAIN	30A01158-206
	1		ANGLE L.	30A01359-219
	1		ANGLE R.	30A01359-218
	2		ANGLE	6A01359-004
13	1		ASS'Y BULKHEAD #14	30A01000-343
	1		BULKHEAD - MAIN	30A01158-207
	1		CASTING – HINGE	3A01437-001
	1		ANGLE UPPER	30A01359-209
	1		ANGLE LOWER	30A01359-210
	4		ANGLE	6A01359-004
14	1		ASS'Y SPR. BAR PANEL FWD	30A03000-354
	1		PANEL – SPR. BAR	30A01155-031
	1		ANGLE – SIDE L.	30A01352-039
	1		ANGLE – SIDE R.	30A01352-040

WIPLINE MODEL 3000 FLOAT PARTS MANUAL

HULL ASSEMBLY - AMPHIBIAN, FIGURE 1

<u>REF NO.</u>	<u>NO.</u>	<u>REQ.</u>	<u>PART DESCRIPTION</u>	<u>PART NO.</u>
	2		ANGLE	6A01359-004
	1		BOLT	AN4-5A
	1		WASHER	NAS1149F0463P
	1		NUT	MS21044N4
15	1		ASS'Y SPR. BAR PANEL AFT	30A01000-353
	1		PANEL – SPR. BAR	30A01155-031
	1		ANGLE – SIDE L.	30A01352-033
	1		ANGLE – SIDE R.	30A01352-034
	2		ANGLE	30A01156-125
	1		BOLT	AN4-5A
	1		WASHER	NAS1149F0463P
	1		NUT	MS21044N4
16	1		NOSE BUMPER	30A01359-225
	1		ANGLE	30A01359-225
17	1		STEP – BOARDING	30A01000-358
18	2		REINFORCEMENT – COVER	30A01156-144
19	2		COVER – INSP.	21A01004-101
	56		SCREW – ATTACH	AN526-632R6
20	1		SIDE SKIN – FWD L. OUTBR'D	30A01148-005
	1		SIDE SKIN – FWD R. OUTBR'D	30A01148-006
	2		STIFFENER	30A01340-153
	2		STIFFENER	30A01340-133
	2		STIFFENER	30A01340-134
	2		STIFFENER	30A01340-135
	2		STIFFENER	30A01340-136
21	1		SIDE SKIN – MIDDLE L. OUTBR'D	30A01148-011
	1		SIDE SKIN – MIDDLE R. OUTBR'D	30A01148-012
	1		SIDE SKIN – MIDDLE L. INBR'D	30A01148-007

WIPLINE MODEL 3000 FLOAT PARTS MANUAL

HULL ASSEMBLY - AMPHIBIAN, FIGURE 1

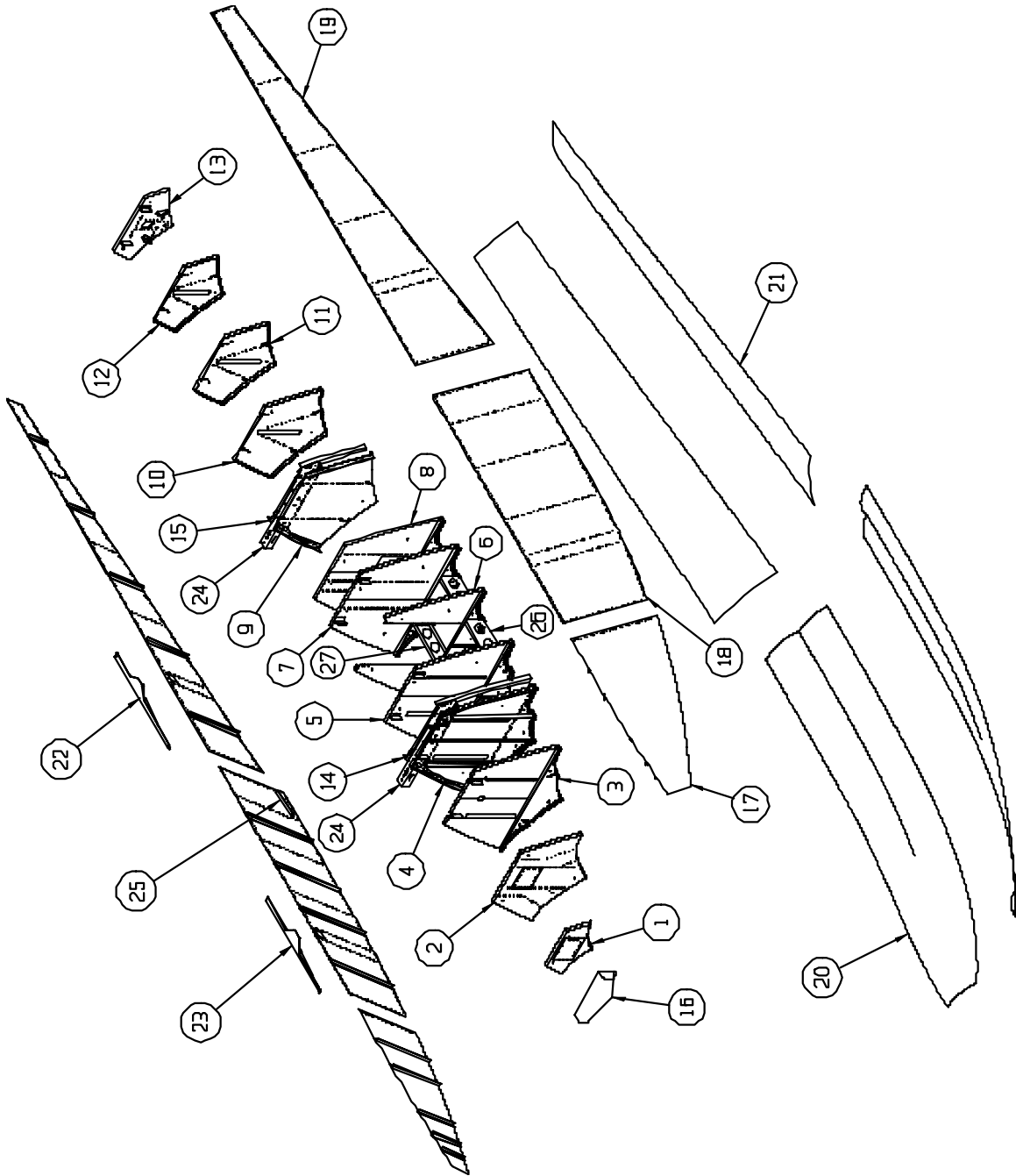
<u>REF NO.</u>	<u>NO.</u>	<u>REQ.</u>	<u>PART DESCRIPTION</u>	<u>PART NO.</u>
	1		SIDE SKIN – MIDDLE R. INBR'D	30A01148-008
	2		STIFFENER	30A01340-137
	2		STIFFENER	30A01340-152
	2		STIFFENER	30A01340-138
	2		STIFFENER	30A01340-139
22	1		SIDE SKIN – AFT L. OUTBR'D	30A01148-013
	1		SIDE SKIN – AFT R. OUTBR'D	30A01148-014
	1		SIDE SKIN – AFT L. INBR'D	30A01148-009
	1		SIDE SKIN – AFT R. INBR'D	30A01148-010
	2		STIFFENER	30A01340-140
	2		STIFFENER	30A01340-141
	2		STIFFENER	30A01340-142
	2		STIFFENER	30A01340-143
	2		STIFFENER	30A01340-144
			<u>NOTE:</u> DIFFERENCE BETWEEN R. AND L. IS FINISH	
23	1		BOTTOM SKIN FWD L.	30A01151-103
	1		BOTTOM SKIN FWD R.	30A01151-102
24	1		BOTTOM SKIN AFTERBODY L.	30A01148-037
	1		BOTTOM SKIN AFTERBODY R.	30A01148-038
25	1		DOUBLER – GUNWALL AFT L.	30A01162-047
	1		DOUBLER – GUNWALL AFT R.	30A01162-048
26	1		DOUBLER – GUNWALL FWD L.	30A01162-045
	1		DOUBLER – GUNWALL FWD R.	30A01162-046
27	1		TUBE – SPR. BAR MOUNTING R.	30A03319-001
	1		TUBE – SPR. BAR MOUNTING L.	30A03319-002
	6		BOLT	AN4-22A
	12		WASHER	NAS1149D0416J
	12		WASHER	NAS1149D0463J
	6		NUT	MS21044N4

WIPLINE MODEL 3000 FLOAT PARTS MANUAL

HULL ASSEMBLY - AMPHIBIAN, FIGURE 1

<u>REF NO.</u>	<u>NO.</u>	<u>REQ.</u>	<u>PART DESCRIPTION</u>	<u>PART NO.</u>
28	2		BAGGAGE REINFORCEMENT	34A01005-385
	4		ANGLE	34A01340-173
	4		ANGLE	34A01340-174
29	2		BAGGAGE REINFORCEMENT	34A01005-384
	4		ANLGE	34A01340-173
	4		ANGLE	34A01340-174

WIPLINE MODEL 3000 FLOAT PARTS MANUAL



HULL ASSEMBLY – SEAPLANE  
FIGURE 2

WIPLINE MODEL 3000 FLOAT PARTS MANUAL

HULL ASSEMBLY - SEAPLANE, FIGURE 2

<u>REF NO.</u>	<u>NO.</u>	<u>REQ.</u>	<u>PART DESCRIPTION</u>	<u>PART NO.</u>
1	1		ASS'Y - BULKHEAD #1	30A01000-329
	1		BULKHEAD MAIN	30A01155-029
	1		COVER – BULKHEAD	30S01158-263
	1		NUT PLATES	MS21078-4
2	1		ASSY BULKHEAD #3	30A01000-330
	1		BULKHEAD - MAIN	30A01158-208
	1		ANGLE – NOSE BOX ATTACH	30A01326-020
	1		ANGLE – NOSE BOX ATTACH	30A01326-021
	1		ANGLE – BEND L.	30A01359-211
	1		ANGLE – BEND R.	30A01359-212
	1		ANGLE – SHORT L.	30A01359-213
	1		ANGLE – SHORT R.	30A01359-214
	2		SHIM – ANGLE	30A01163-072
	1		COVER – BULKHEAD	30S01158-264
3	1		ASSY BULKHEAD #4	30A01000-331
	1		BULKHEAD – MAIN L.	30A01158-209
	1		BULKHEAD – MAIN R.	30A01158-210
	1		SUPPORT – BULKHEAD LOWER	30A01158-222
	1		ANGLE L.	30A01359-223
	1		ANGLE R.	30A01359-224
	2		ANGLE	6A01359-004
4	1		ASSY BULKHEAD #5	30A01000-336
	1		BULKHEAD - MAIN L.	30A01158-211
	1		BULKHEAD - MAIN R.	30A01158-212
	1		ANGLE – SIDE L.	30A01352-037
	1		ANGLE – SIDE R.	30A01352-038
	1		PANEL – SPR. BAR	30A01155-032
	1		SUPPORT – BULKHEAD LOWER	30A01158-223
	1		ANGLE L.	30A01359-221
	1		ANGLE R.	30A01359-222
2		ANGLE	6A01359-004	

WIPLINE MODEL 3000 FLOAT PARTS MANUAL

HULL ASSEMBLY - SEAPLANE, FIGURE 2

<u>REF NO.</u>	<u>NO.</u>	<u>REQ.</u>	<u>PART DESCRIPTION</u>	<u>PART NO.</u>	
5	1		ASSY BULKHEAD #6	30A01000-332	
	1		BULKHEAD – MAIN L.	30A01158-213	
	1		BULKHEAD – MAIN R.	30A01158-214	
	1		SUPPORT – BULKHEAD LOWER	30A01158-224	
	6		ANGLE	6A01359-004	
6	1		ASSY BULKHEAD #7 L.	30A01000-333	
	1		BULKHEAD – MAIN L.	30A01158-215	
	1		BULKHEAD – MAIN R.	30A01158-216	
	1		SUPPORT – BULKHEAD LOWER	30A01158-225	
	4		ANGLE	6A01359-004	
	1		BAGGAGE FLOOR	34A01008-116	
7	1		ASS'Y – BULKHEAD #8 L	30A01000-335	
	1		BULKHEAD – MAIN L.	30A01158-217	
	1		BULKHEAD – MAIN R.	30A01158-229	
	1		SUPPORT – BULKHEAD LOWER	30A01158-227	
	6		ANGLE	6A01359-004	
	1		ASSY BULKHEAD #8 R	30A01000-334	
	1		BULKHEAD – MAIN L.	30A01158-218	
	1		BULKHEAD – MAIN R.	30A01158-228	
	1		SUPPORT – BULKHEAD LOWER	30A01158-226	
	6		ANGLE	6A01359-004	
	8	1		ASS'Y – BULKHEAD #9	30S01000-407
		1		BULKHEAD – MAIN L.	34A01158-239
		1		BULKHEAD – MAIN R.	34A01158-240
1			SUPPORT – BULKHEAD LOWER	34A01158-241	
4			ANGLE	6A01359-004	
1			ANGLE	34S01158-258	
1			ANGLE	34S01158-259	
9		1		ASS'Y - BULKHEAD #10	30S01000-408
	1		BULKHEAD – MAIN	30A01158-221	
	1		ANGLE – SIDE L.	30A01352-035	

WIPLINE MODEL 3000 FLOAT PARTS MANUAL

HULL ASSEMBLY - SEAPLANE, FIGURE 2

<u>REF NO.</u>	<u>NO.</u>	<u>REQ.</u>	<u>PART DESCRIPTION</u>	<u>PART NO.</u>
	1		ANGLE – SIDE R.	30A01352-036
	1		PANEL – SPR. BAR	30A01155-032
	2		ANGLE	6A01359-004
	2		ANGLE	30S01340-180
10	1		ASS'Y – BULKHEAD #11	30A01000-340
	1		BULKHEAD – MAIN	30A01158-204
	1		ANGLE L.	30A01359-217
	1		ANGLE R.	30A01359-216
	2		ANGLE	6A01359-004
11	1		BULKHEAD #12	30A01000-341
	1		BULKHEAD – MAIN	30A01158-205
	1		ANGLE L.	30A01359-217
	1		ANGLE R.	30A01359-216
	2		ANGLE	6A01359-004
12	1		ASS'Y BULKHEAD #13	30A01000-342
	1		BULKHEAD - MAIN	30A01158-206
	1		ANGLE L.	30A01359-219
	1		ANGLE R.	30A01359-218
	2		ANGLE	6A01359-004
13	1		ASS'Y BULKHEAD #14	30A01000-343
	1		BULKHEAD - MAIN	30A01158-207
	1		CASTING – HINGE	3A01437-001
	1		ANGLE UPPER	30A01359-209
	1		ANGLE LOWER	30A01359-210
	4		ANGLE	6A01359-004
14	1		ASS'Y SPR. BAR PANEL FWD	30A01000-354
	1		PANEL – SPR. BAR	30A01155-031
	1		ANGLE – SIDE L.	30A01352-039
	1		ANGLE – SIDE R.	30A01352-040

WIPLINE MODEL 3000 FLOAT PARTS MANUAL

HULL ASSEMBLY - SEAPLANE, FIGURE 2

<u>REF NO.</u>	<u>NO.</u>	<u>REQ.</u>	<u>PART DESCRIPTION</u>	<u>PART NO.</u>
	2		ANGLE	30A01156-125
	1		BOLT	AN4-5A
	1		WASHER	NAS1149F0463P
	1		NUT	MS21044N4
15	1		ASS'Y SPR. BAR PANEL AFT	30A01000-353
	1		PANEL – SPR. BAR	30A01155-031
	1		ANGLE – SIDE L.	30A01352-033
	1		ANGLE – SIDE R.	30A01352-034
	2		ANGLE	30A01156-125
	1		BOLT	AN4-5A
	1		WASHER	NAS1149F0463P
	1		NUT	MS21044N4
	4		SCREW	1032R10
16	1		NOSE BUMPER	30S01739-001
	2		ANGLE	30S01326-034
	4		SCREW	AN5261032R10
17	1		SIDE SKIN – FWD L. OUTBR'D	30A01148-005
	1		SIDE SKIN – FWD R. OUTBR'D	30A01148-006
	2		STIFFENER	30A01340-153
	2		STIFFENER	30A01340-133
	2		STIFFENER	30A01340-134
	2		STIFFENER	30A01340-135
	2		STIFFENER	30A01340-136
18	1		SIDE SKIN – MIDDLE L. OUTBR'D	30S01148-035
	1		SIDE SKIN – MIDDLE R. OUTBR'D	30S01148-036
	1		SIDE SKIN – MIDDLE L. INBR'D	30S01148-033
	1		SIDE SKIN – MIDDLE R. INBR'D	30S01148-034
	2		STIFFENER	30A01340-137
	2		STIFFENER	30A01340-152
	2		STIFFENER	30A01340-138

WIPLINE MODEL 3000 FLOAT PARTS MANUAL

HULL ASSEMBLY - SEAPLANE, FIGURE 2

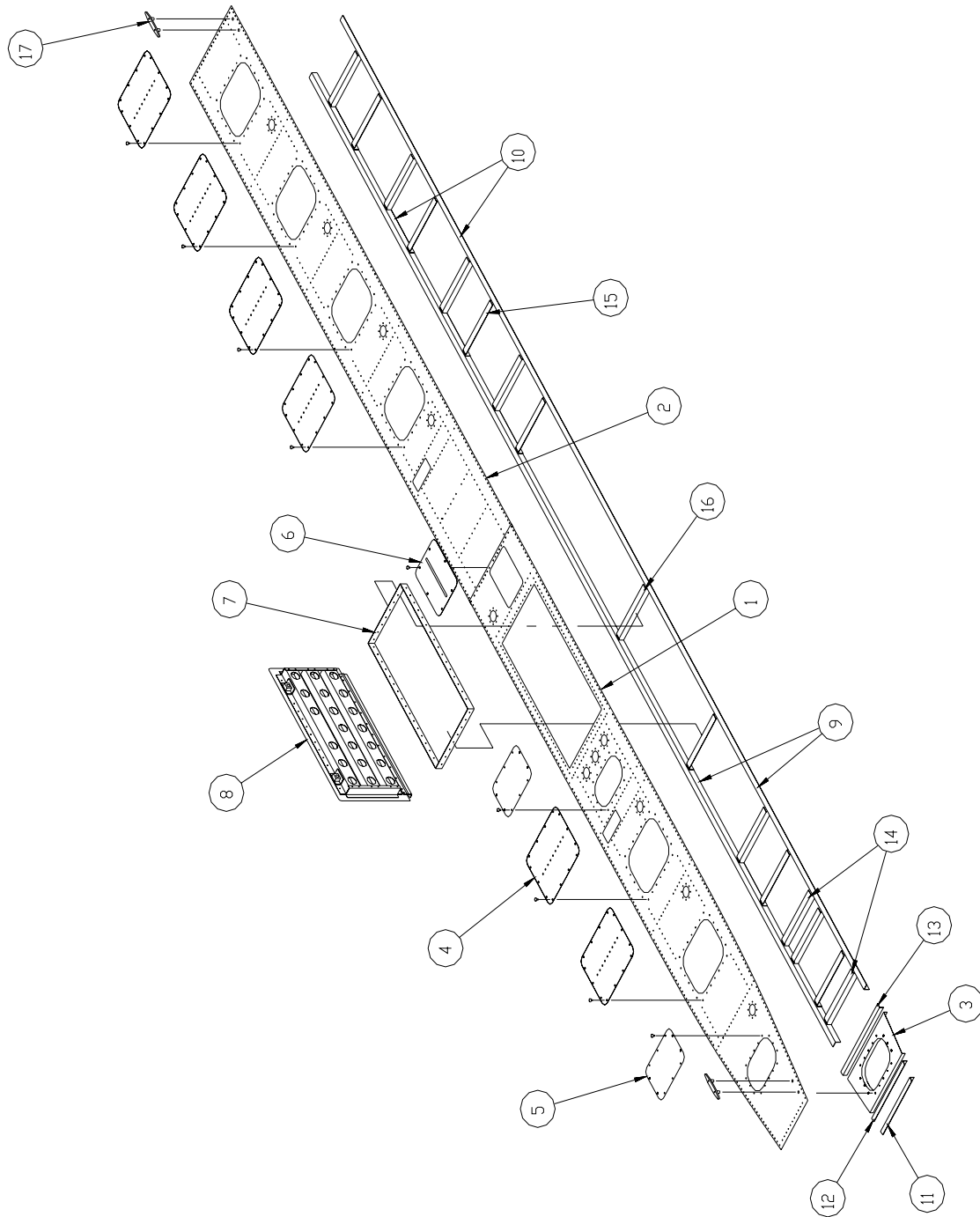
<u>REF NO.</u>	<u>NO.</u>	<u>REQ.</u>	<u>PART DESCRIPTION</u>	<u>PART NO.</u>
	2		STIFFENER	30A01340-139
19	1		SIDE SKIN – AFT L. OUTBR'D	30A01148-013
	1		SIDE SKIN – AFT R. OUTBR'D	30A01148-014
	1		SIDE SKIN – AFT L. INBR'D	30A01148-009
	1		SIDE SKIN – AFT R. INBR'D	30A01148-010
	2		STIFFENER	30A01340-140
	2		STIFFENER	30A01340-141
	2		STIFFENER	30A01340-142
	2		STIFFENER	30A01340-143
	2		STIFFENER	30A01340-144
			<u>NOTE:</u> DIFFERENCE BETWEEN R. AND L. IS FINISH	
20	1		BOTTOM SKIN FWD L.	30A01151-103
	1		BOTTOM SKIN FWD R.	30A01151-102
21	1		BOTTOM SKIN AFTERBODY L.	30S01148-041
	1		BOTTOM SKIN AFTERBODY R.	30S01148-042
22	1		DOUBLER – GUNWALL AFT L.	30A01162-047
	1		DOUBLER – GUNWALL AFT R.	30A01162-048
23	1		DOUBLER – GUNWALL FWD L.	30A01162-045
	1		DOUBLER – GUNWALL FWD R.	30A01162-046
24	1		TUBE – SPR. BAR MOUNTING R.	30A03319-001
	1		TUBE – SPR. BAR MOUNTING L.	30A03319-002
	6		BOLT	AN4-22A
	12		WASHER	NAS1149D0416J
	12		WASHER	NAS1149D0463J
	6		NUT	MS21044N4
25	2		DOUBLER – AFT CHINE	30A01340-154

WIPLINE MODEL 3000 FLOAT PARTS MANUAL

HULL ASSEMBLY - SEAPLANE, FIGURE 2

<u>REF NO.</u>	<u>NO.</u>	<u>REQ.</u>	<u>PART DESCRIPTION</u>	<u>PART NO.</u>
26	2		BAGGAGE REINFORCEMENT	34A01005-385
	4		ANGLE	34A01340-173
	4		ANGLE	34A01340-174
27	2		BAGGAGE REINFORCEMENT	34A01005-384
	4		ANLGE	34A01340-173
	4		ANGLE	34A01340-174

WIPLINE MODEL 3000 FLOAT PARTS MANUAL



TOP SKIN – HULL – AMPHIBIAN  
FIGURE 3

WIPLINE MODEL 3000 FLOAT PARTS MANUAL

TOP SKIN - HULL – AMPHIBIAN, FIGURE 3

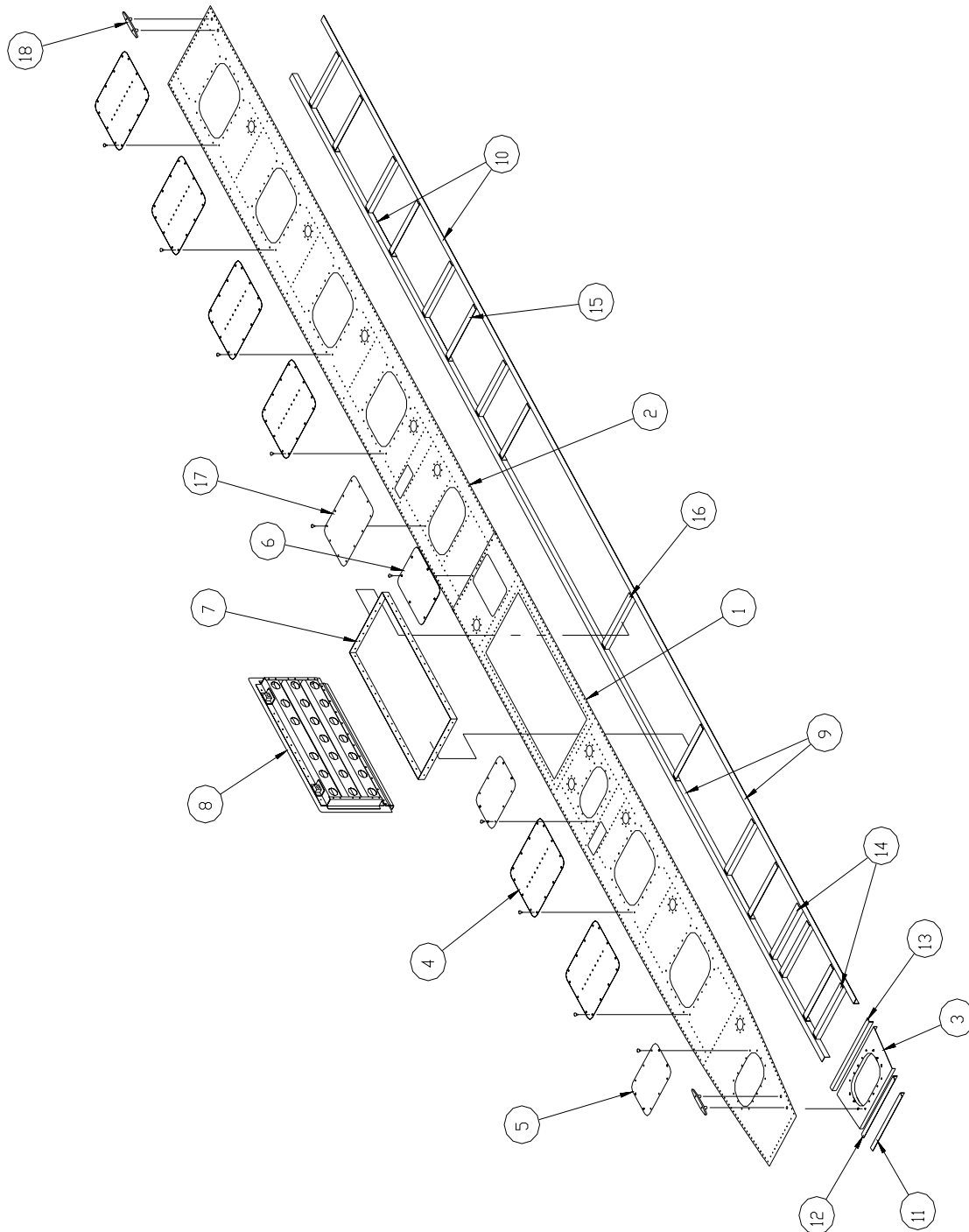
REF NO.			
<u>NO.</u>	<u>REQ.</u>	<u>PART DESCRIPTION</u>	<u>PART NO.</u>
1	1	SKIN – FWD SECTION L.	30A01148-001
	1	SKIN – FWD SECTION R.	30A01148-002
2	1	SKIN – AFT SECTION L.	30A01148-003
	1	SKIN – AFT SECTION R.	30A01148-004
3	1	SUPPORT – INSP. COVER – SMALL	21A01002-131
		A/R NUT – TINNERMAN	9A3-671
		A/R TAPE – INSULATOR	COMM.
4	6	INSP. COVER – LARGE - W/ ANGLE & GASKETS	21A01000-258
		A/R SCREW – ATTACH	#8 X 5/8
	6	SEAL – GASKET ONLY	1001437
5	2	INSP. COVER – SMALL & GASKETS	21A01000-284
		A/R SCREW – ATTACH	#8 X 5/8
	2	SEAL – GASKET ONLY	21A01000-284
6	1	COVER – GEAR INDICATOR L.	30A01002-203
	1	COVER – GEAR INDICATOR R.	30A01002-202
	1	PLACARD – DOWN - LAND	10A3-6338-1
	1	PLACARD – UP - WATER	10A3-6338-2
	2	SCREW – CAM - LOK	2600-4
	4	SCREW – CAM – LOK	2600-5
	6	RECEPTACLE – CAM – LOK	212-12N
7	1	JAMB – BAGGAGE DOOR	30A01162-042
	1	JAMB – BAGGAGE DOOR, HINGE SIDE	1001573
8	1	ASSY – BAGGAGE DOOR	30A01000-324
	1	COVER - SKIN	30A01162-041
	1	HINGE	30A01741-005
	1	STIFFENER – DOOR	30A01004-145
	2	STIFFENER - DOOR	30A01004-144
	2	STIFFENER ENDS	4A01004-049

WIPLINE MODEL 3000 FLOAT PARTS MANUAL

TOP SKIN - HULL – AMPHIBIAN, FIGURE 3

<u>REF NO.</u>	<u>NO.</u>	<u>REQ.</u>	<u>PART DESCRIPTION</u>	<u>PART NO.</u>
	2		RETAINER - LOCK	3A01206-001
	2		LOCK PIN	3A01273-004
	2		CATCH – LATCH	3A01702-001
	2		LOCK SPRING	3A01525-003
	2		RING – OPENING	9-0177A221
	1		SEAL – GASKET (NOT SHOWN)	1001499
9	1		TOP RAIL – FWD L.	30A01326-025
	1		TOP RAIL – FWD R.	30A01326-024
10	1		TOP RAIL – AFT L.	30A01326-029
	1		TOP RAIL – AFT R.	30A01326-028
11	1		STIFFENER	30A01340-175
12	1		STIFFENER	30A01340-176
13	1		STIFFENER	30A01340-177
14	2		STIFFENER	30A01326-032
15	A/R		STIFFENER	30A01326-022
16	2		STIFFENER – BAGGAGE DOOR	30A01326-030
17	2		CLEAT – TIE DOWN	30A01213-007
	4		BOLT	AN4-7A
	4		WASHER	NAS1149D0463J
	4		NUT	MS21083N4

WIPLINE MODEL 3000 FLOAT PARTS MANUAL



TOP SKIN – HULL – SEAPLANE  
FIGURE 4

WIPLINE MODEL 3000 FLOAT PARTS MANUAL

TOP SKIN - HULL – SEAPLANE, FIGURE 4

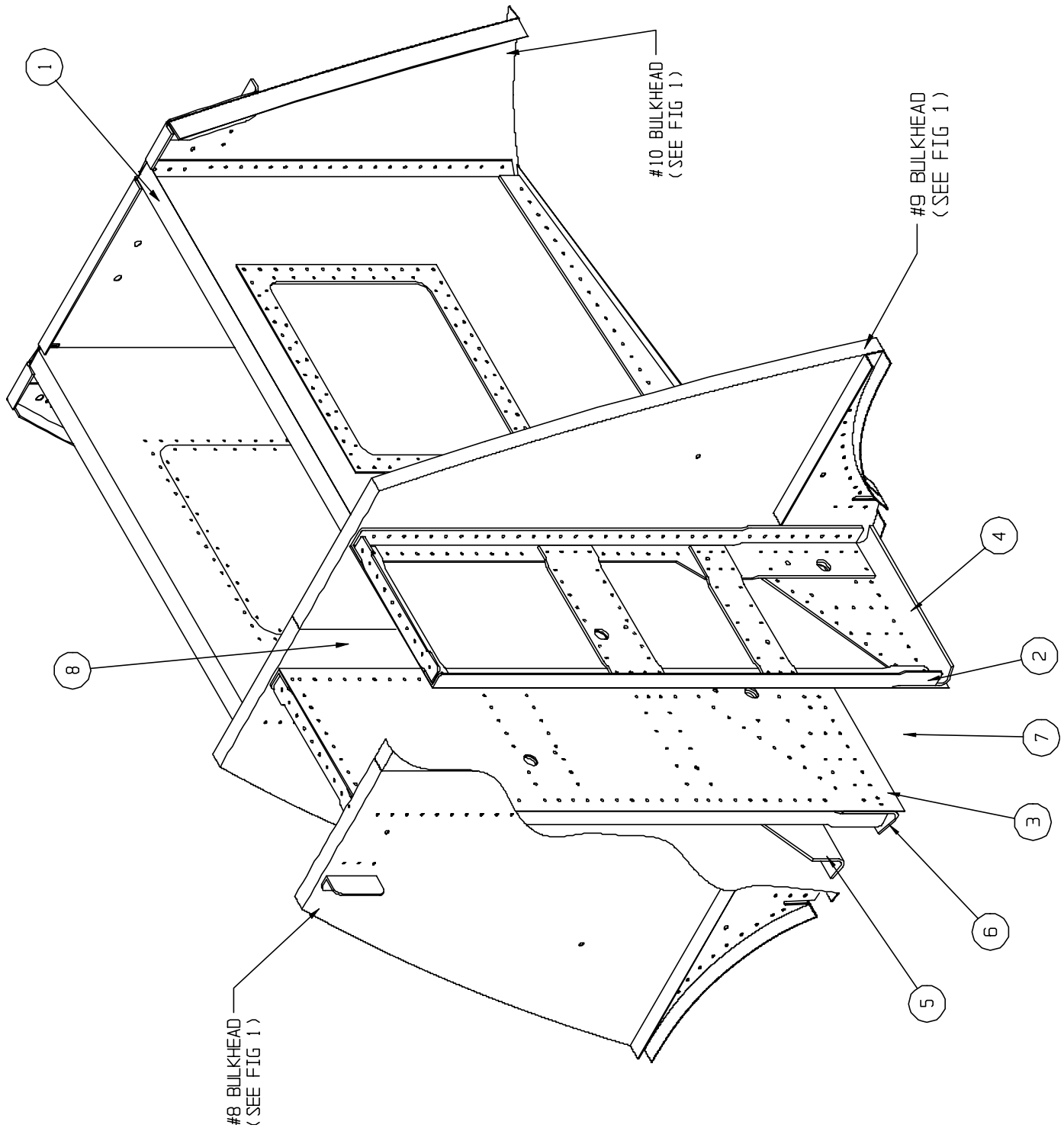
<u>REF NO.</u>	<u>NO.</u>	<u>REQ.</u>	<u>PART DESCRIPTION</u>	<u>PART NO.</u>
1	1		SKIN – FWD SECTION L.	30A01148-001
	1		SKIN – FWD SECTION R.	30A01148-002
2	1		SKIN – AFT SECTION L.	30A01148-003
	1		SKIN – AFT SECTION R.	30A01148-004
3	1		SUPPORT – INSP. COVER – SMALL	21A01002-131
			A/R NUT – TINNERMAN	9A3-671
			A/R TAPE – INSULATOR	COMM.
4	6		INSP. COVER – LARGE - W/ ANGLE & GASKETS	21A01000-258
			A/R SCREW – ATTACH	#8 X 5/8
	6		SEAL – GASKET ONLY	1001437
5	2		INSP. COVER – SMALL & GASKETS	21A01000-284
			A/R SCREW – ATTACH	#8 X 5/8
	2		SEAL – GASKET ONLY	1001728
6	1		COVER & GASKET	21S01000-399
	2		STIFFENER – ANGLE	30S01326-035
	1		RETRACT COVER GASKET ONLY	1002110
7	1		JAMB – BAGGAGE DOOR	30A01162-042
	1		JAMB - BAGGAGE DOOR HINGE SIDE	1001573
8	1		ASSY – BAGGAGE DOOR	30A01000-324
	1		COVER - SKIN	30A01162-041
	1		HINGE	30A01741-005
	1		STIFFENER – DOOR	30A01004-145
	2		STIFFENER - DOOR	30A01004-144
	2		STIFFENER ENDS	4A01004-049
	2		RETAINER - LOCK	3A01206-001
	2		LOCK PIN	3A01273-004
	2		CATCH – LATCH	3A01702-001
	2		LOCK SPRING	3A01525-003

WIPLINE MODEL 3000 FLOAT PARTS MANUAL

TOP SKIN - HULL – SEAPLANE, FIGURE 4

<u>REF NO.</u>	<u>NO.</u>	<u>REQ.</u>	<u>PART DESCRIPTION</u>	<u>PART NO.</u>
	2		RING – OPENING	9-0177A221
	1		SEAL – GASKET (NOT SHOWN)	1001499
9	1		TOP RAIL – FWD L.	30A01326-025
	1		TOP RAIL – FWD R.	30A01326-024
10	1		TOP RAIL – AFT L.	30A01326-029
	1		TOP RAIL – AFT R.	30A01326-028
11	1		STIFFENER	30A01340-175
12	1		STIFFENER	30A01340-176
13	1		STIFFENER	30A01340-177
14	2		STIFFENER	30A01326-032
15	A/R		STIFFNER	30A01326-022
16	1		STIFFENER – BAGGAGE DOOR	30A01326-030
17	1		INSP. COVER & GASKET	30S01000-409
	1		SCREW – ATTACH	#8 X 5/8
	1		SEAL – GASKET	
18	2		CLEAT – TIE DOWN	21A01213-007
	4		WASHER	NAS1149D0463J
	4		NUT	MS21083N4

WIPLINE MODEL 3000 FLOAT PARTS MANUAL



WHEELWELL – ASSEMBLY - AMPHIBIAN  
FIGURE 5

WIPLINE MODEL 3000 FLOAT PARTS MANUAL

WHEELWELL ASSEMBLY – AMPHIBIAN, FIGURE 5

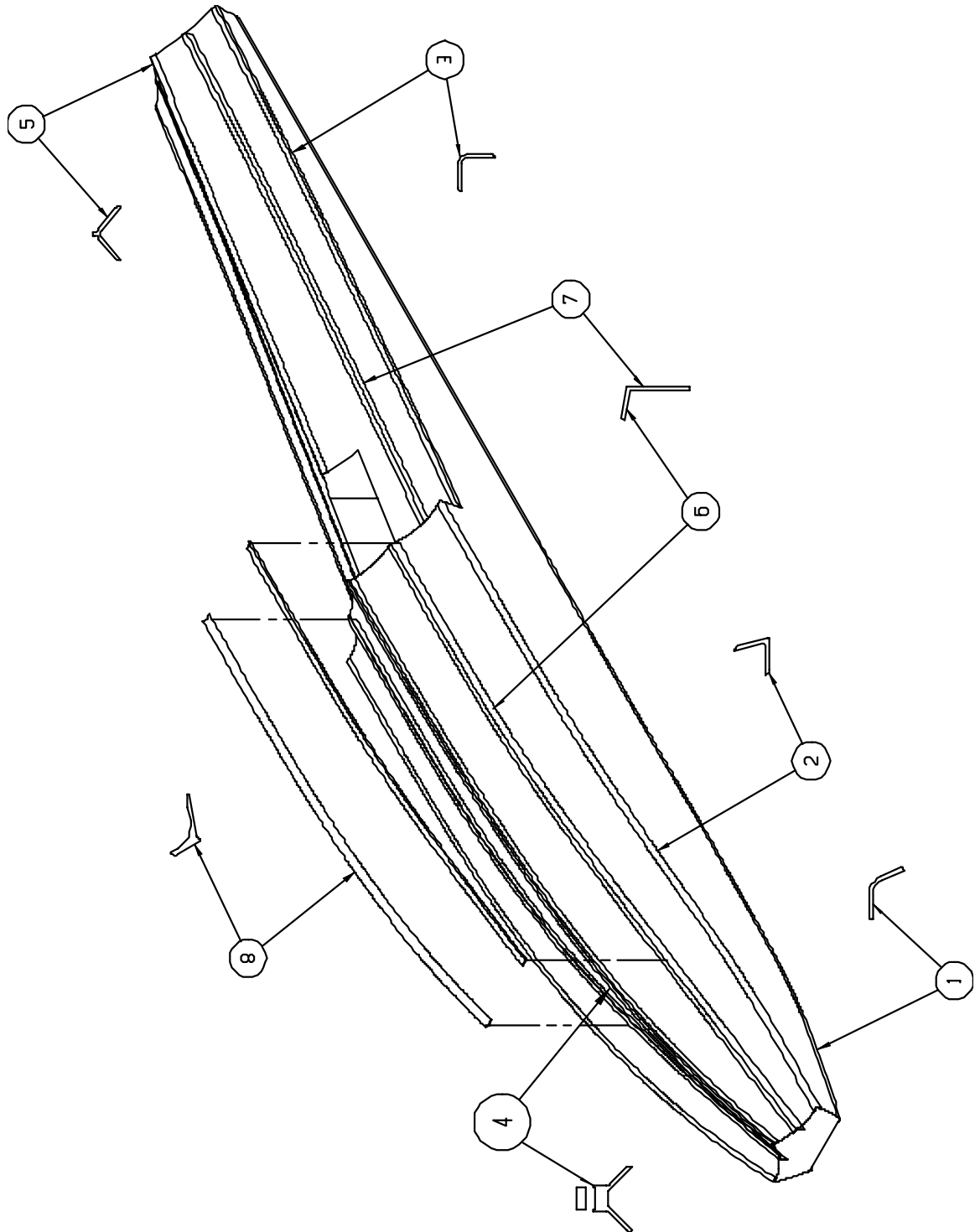
<u>REF NO.</u>	<u>NO.</u>	<u>REQ.</u>	<u>PART DESCRIPTION</u>	<u>PART NO.</u>
1	1		ASS'Y – WHEELWELL HALF L.	30A01000-349
	1		PANEL – FORMED L.	30A01158-235
	1		RING – COVER REINFORCEMENT	13A01156-124
	1		COVER	21A01004-101
	28		SCREW	AN526-632R6
	1		ASS'Y – WHEELWELL HALF R.	30A01000-348
	1		PANEL – FORMED R.	30A01158-234
	1		RING – COVER REINFORCEMENT	13A01156-124
	1		COVER	21A01004-101
	28		SCREW	AN526-632R6
2	1		ASS'Y – WHEELWELL PANEL – OUTBR'D L.	30A01000-345
	1		ASS'Y - WHEELWELL PANEL – OUTBR'D R.	30A01000-350
3	1		ASS'Y – WHEELWELL PANEL – INBR'D L.	30A01000-347
	1		ASS'Y - WHEELWELL PANEL – INBR'D R.	30A01000-346
4	1		CARRY-THRU STRAP OUTBR'D L.	30A01156-139
	1		CARRY-THRU STRAP OUTBR'D R.	30A01156-142
5	1		CARRY-THRU STRAP INBR'D L.	30A01156-141
	1		CARRY-THRU STRAP INBR'D R.	30A01156-140
6	1		CARRY-THRU STRAP INBR'D L.	30A01156-143
	1		CARRY-THRU STRAP INBR'D R.	30A01156-138
	1		ANGLE – ATTACH AFT L.	30A01156-145
	1		ANGLE – ATTACH AFT R.	30A01156-150
	1		SHIM	30A01160-004
	2		ANGLE – ATTACH FWD	21A01326-015
7	1		SAND GUARD (NOT SHOWN) L.	30A01150-139
	1		SAND GUARD (NOT SHOWN) R.	30A01150-140
	8		SCREW	AN526-1032R8
8		1 MUD FLAP (NOT SHOWN)	30A01569-002	

WIPLINE MODEL 3000 FLOAT PARTS MANUAL

WHEELWELL ASSEMBLY – AMPHIBIAN, FIGURE 5

<u>REF NO.</u>	<u>NO. REQ.</u>	<u>PART DESCRIPTION</u>	<u>PART NO.</u>
	1	REINFORCEMENT	30A01150-141

WIPLINE MODEL 3000 FLOAT PARTS MANUAL

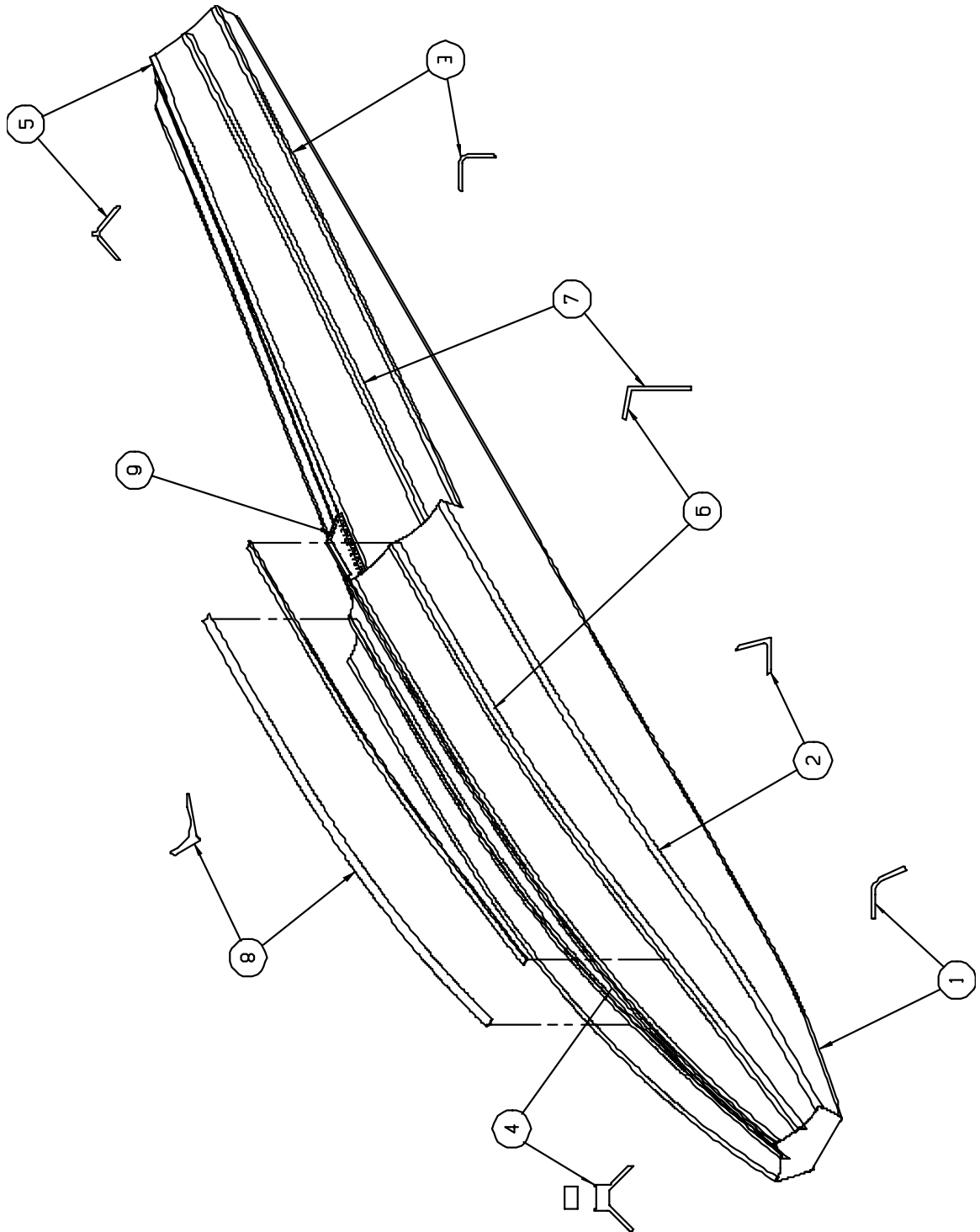


EXTRUSIONS – HULL – AMPHIBIAN  
FIGURE 6

WIPLINE MODEL 3000 FLOAT PARTS MANUAL

EXTRUSIONS - HULL – AMPHIBIAN, FIGURE 6

<u>REF. NO.</u>	<u>NO.</u>	<u>REQ.</u>	<u>PART DESCRIPTION</u>	<u>PART NO.</u>
1	1		GUNWALL – L.	30A01324-005
	1		GUNWALL – R.	30A01324-006
2	1		CHINE - FWD L.	30A01394-001
	1		CHINE – FWD R.	30A01394-002
3	1		CHINE – AFTERBODY L.	30A01395-001
	1		CHINE – AFTERBODY R.	30A01395-002
4	1		KEEL - MAIN	30A01377-001
5	1		KEEL - AFTERBODY	30A01425-001
6	1		SISTER KEEL – FWD L.	30A01361-037
	1		SISTER KEEL – FWD R.	30A01361-038
7	1		SISTER KEEL – AFT L.	30A01361-039
	1		SISTER KEEL – AFT R.	30A01361-040
8	1		SISTER KEEL – OUTER L.	30A01342-009
	1		SISTER KEEL – OUTER R.	30A01342-010



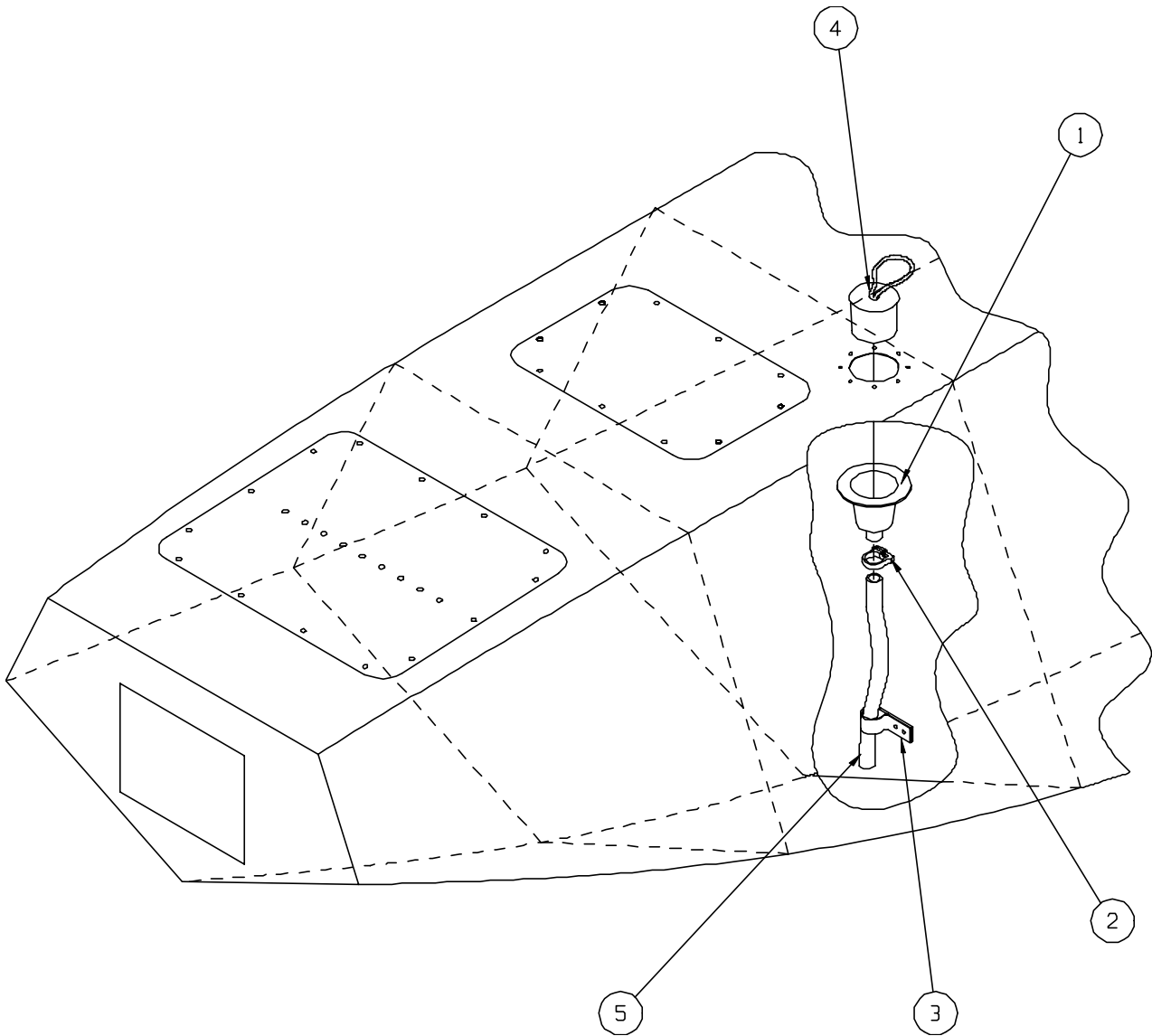
EXTRUSIONS – HULL – SEAPLANE  
FIGURE 7

WIPLINE MODEL 3000 FLOAT PARTS MANUAL

EXTRUSIONS - HULL – SEAPLANE, FIGURE 7

<u>REF. NO.</u>	<u>NO.</u>	<u>REQ.</u>	<u>PART DESCRIPTION</u>	<u>PART NO.</u>
1	1		GUNWALL – L.	30A01324-005
	1		GUNWALL – R.	30A01324-006
2	1		CHINE - FWD L.	30A01394-001
	1		CHINE – FWD R.	30A01394-002
3	1		CHINE – AFTERBODY L.	30A01395-001
	1		CHINE – AFTERBODY R.	30A01395-002
4	1		KEEL - MAIN	30A01377-001
5	1		KEEL - AFTERBODY	30S01425-003
6	1		SISTER KEEL – FWD L.	30A01361-037
	1		SISTER KEEL – FWD R.	30A01361-038
7	1		SISTER KEEL – AFT L.	30S01361-043
	1		SISTER KEEL – AFT R.	30S01361-044
8	1		SISTER KEEL – OUTER L.	30A01342-009
	1		SISTER KEEL – OUTER R.	30A01342-010
9	1		ANGLE SUPPORT – AFTERBODY L.	30S01163-085
	1		ANGLE SUPPORT – AFTERBODY R.	30S01163-086

WIPLINE MODEL 3000 FLOAT PARTS MANUAL



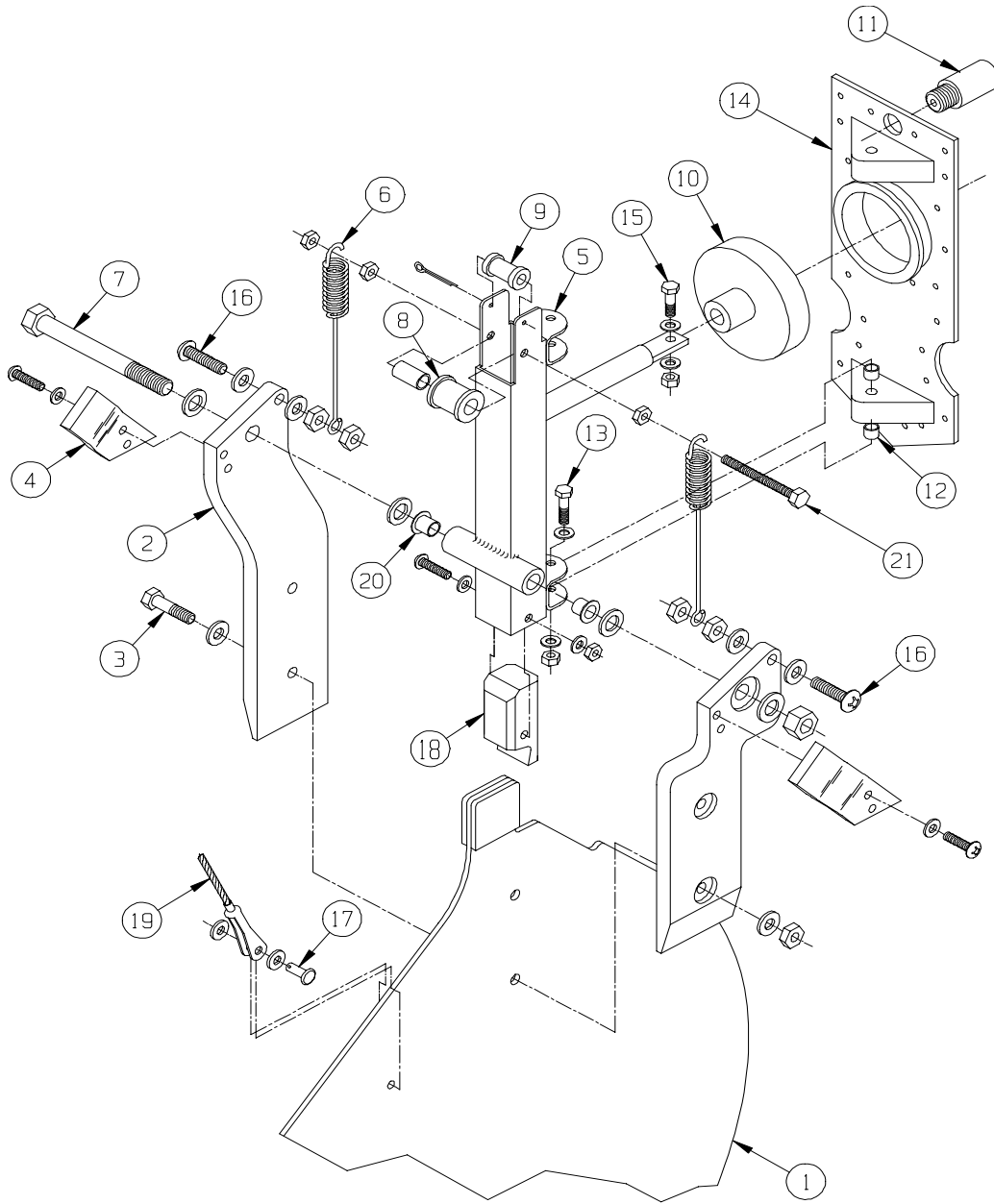
PUMPER TUBE INSTALLATION  
FIGURE 8

WIPLINE MODEL 3000 FLOAT PARTS MANUAL

PUMPER TUBE INSTALLATION, FIGURE 8

<u>REF. NO.</u>	<u>NO.</u>	<u>REQ.</u>	<u>PART DESCRIPTION</u>	<u>PART NO.</u>
1	1		CUP – PUMPOUT ALUM. A/R RIVETS	4A01749-001 AN470AD4-4
2	1		CLAMP – UPPER END	SNP16-10
3	1		CLAMP – LOWER END	3A01158-003
4	1		STOPPER – PUMPER TUBE	2111
5	1		PUMPOUT TUBE 18.5 IN.	30A01618-064
	1		PUMPOUT TUBE 24.5	30A01618-065
	1		PUMPOUT TUBE 26.5	30A01618-066
	1		PUMPOUT TUBE 29.0	30A01618-067
	1		PUMPOUT TUBE 23.0	30A01618-068
	1		PUMPOUT TUBE 26.5	30A01618-069
	1		PUMPOUT TUBE 22.0	30A01618-070
	1		PUMPOUT TUBE 18.0	30A01618-071
	1		PUMPOUT TUBE 15.5	30A01618-072
	1		PUMPOUT TUBE 12.5	30A01618-073
	1		PUMPOUT TUBE 25.0	30A01618-074

WIPLINE MODEL 3000 FLOAT PARTS MANUAL



INSTALLATION WATER RUDDER  
FIGURE 9

WIPLINE MODEL 3000 FLOAT PARTS MANUAL

INSTALLATION WATER RUDDER, FIGURE 9

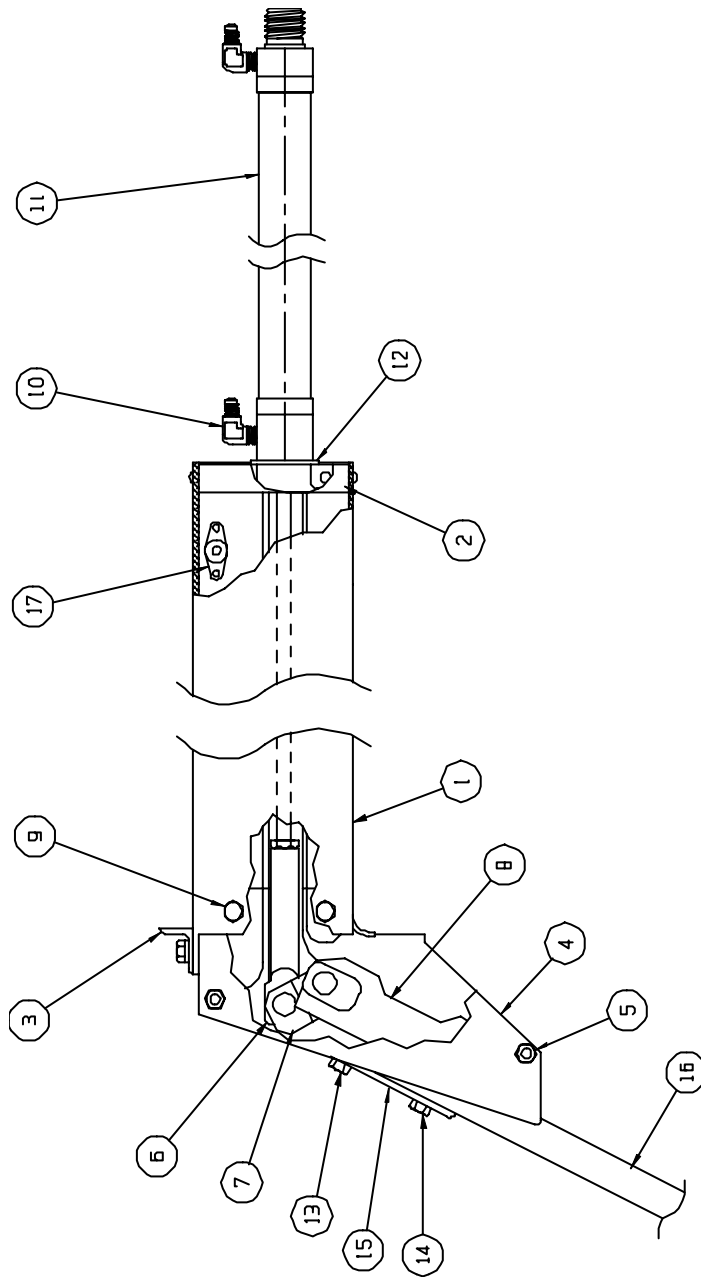
<u>REF NO.</u>	<u>NO.</u>	<u>REQ.</u>	<u>PART DESCRIPTION</u>	<u>PART NO.</u>
1	1		ASS'Y - BLADE	4A08000-094
	1		BLADE	4A08000-062
2	1		ARM - BLADE - L.H.	4A08197-009
	1		ARM - BLADE - R.H.	4A08197-008
3	2		BOLT - ARM ATTACH	AN4-10A
			A/R WASHER	NAS1149D0463J
	2		NUT	H10-4
4	1		RUDDER STOP - UP - L.H. (IF REQ'D)	34A08205-007
	1		RUDDER STOP - UP - R.H. (IF REQ'D)	34A08205-008
	4		SCREW	AN526-1032R10
	1		WASHER - LOCK	MS35333-39
5	1		ASS'Y - WATER RUDDER PIVOT	3A08000-096
6	2		SPRING - RETRACT	3A08525-001
7	1		BOLT - WATER RUDDER HINGE	AN6C34A
			A/R WASHER	NAS1149D0663J
	1		NUT	MS21083N6
8	1		ROLLER - RETRACT CABLE - LOWER	3A08606-001
	1		BUSHING - ROLLER	3A08502-001
	1		BOLT - ROLLER (HEX HD. S.S.)	10/32 X 2"
	3		NUT	H10-3
9	1		ROLLER - RETRACT CABLE - UPPER	6A08601-002
	1		COTTER PIN	MS24665-306
10	1		BOOT - WATER RUDDER	3A08650-001
11	1		GUIDE - WATER RUDDER CABLE	3A08605-001

WIPLINE MODEL 3000 FLOAT PARTS MANUAL

INSTALLATION WATER RUDDER, FIGURE 9

<u>REF NO.</u>	<u>NO.</u>	<u>REQ.</u>	<u>PART DESCRIPTION</u>	<u>PART NO.</u>
12	4		BEARING	03DU-04
13	2		BOLT – RUDDER POST HINGE	AN3C10A
			A/R WASHER	NAS1149D0363J
	2		NUT	H10-3
14	1		CASTING – PIVOT – WATER RUDDER	3A01437-001
15	1		BOLT – RUDDER TO ARM ATTACH	AN3-6A
			A/R WASHER	NAS1149D0363J
	1		NUT	MS21044N3
16	2		SCREW – SPRING ATTACH	AN526-428R16
			A/R WASHER	NAS1149D0363J
	4		NUT	H10-3
17	1		PIN - CLEVIS	MS20392-2C11
			A/R WASHER	NAS1149D0316J
	1		COTTER PIN	MS24665-151
18	1		RUDDER STOP – DOWN (185 ONLY)	6A08183-005
	1		SCREW – RUDDER STOP	AN526-1032R16
	2		WASHER	NAS1149D0363J
	1		NUT	H10-3
19	1		ASS'Y – CABLE – RETRACT	4A08000-072
20	2		BEARING – NYLINER (NOTE 4)	6L11F
21	1		BOLT	1032 X 2" SS

WIPLINE MODEL 3000 FLOAT PARTS MANUAL



ASSEMBLY – NOSE GEAR RETRACTION  
FIGURE 10

WIPLINE MODEL 3000 FLOAT PARTS MANUAL

ASSEMBLY – NOSE GEAR RETRACTION, FIGURE 10

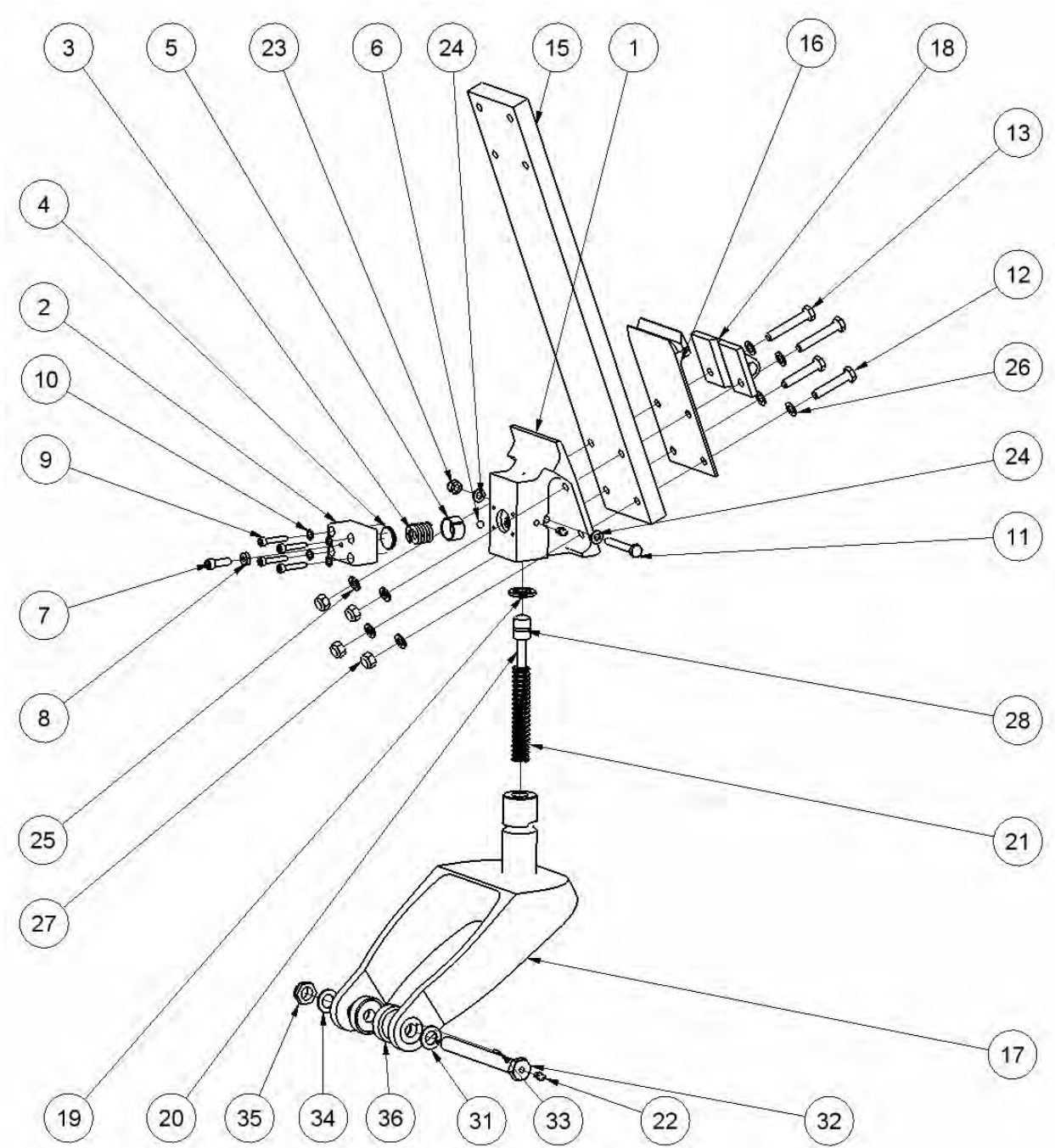
<u>REF NO.</u>	<u>NO.</u>	<u>REQ.</u>	<u>PART DESCRIPTION</u>	<u>PART NO.</u>
1	1		ASS'Y – NOSE BOX	30A07000-017
	1		NOSE – BOX	30A07323-002
	1		COVER – ACCESS	8A01008-080
	1		GASKET	30A07567-011
	4		SCREW	AN526-1032R4
2	1		END – CAP - AFT	21A07237-002
3	1		ANGLE	21A07359-194
	2		BOLT	AN4-6A
	2		WASHER	NAS1149D0463J
	2		WASHER	NAS1149D0416J
	2		NUT	MS21044N4
4	1		TRACK – NOSE END L.	21A07349-003
	1		TRACK – NOSE END R.	21A07349-004
5	2		BOLT	AN4-53A
	4		WASHER	NAS1149D0416J
	2		NUT	NAS5679-A4W
6	1		ROD END - RAM	21A07094-002
	1		NUT - JAMB	AN316-5R
7	1		LINK – DOWN LOCK	21A07032-005
	1		AXLE – SHAFT	21A07509-007
	2		ROLLER	3A07530-001
	2		SNAP RING	5100-46-H
8	1		TROLLEY – SPRING ATTACH	21A07187-009
	2		AXLES - SHAFT	21A07508-002
	4		BLOCK - SLIDE	3A07604-001
9	4		BOLT	AN4-5A
	4		WASHER	NAS1149D0463J

WIPLINE MODEL 3000 FLOAT PARTS MANUAL

ASSEMBLY – NOSE GEAR RETRACTION, FIGURE 10

<u>REF NO.</u>	<u>NO.</u>	<u>REQ.</u>	<u>PART DESCRIPTION</u>	<u>PART NO.</u>
	4		WASHER	NAS1149D0416J
	4		NUT	NAS5679-A4W
10	2		ELBOW	MS20822-4D
11	1		HYDRAULIC CYLINDER	1002572
12	A/R		WASHER	NAS1149D1416J
13	2		BOLT	AN5-20A
	A/R		WASHER	NAS1149F0563P
	2		NUT	MS21044N5
14	2		BOLT	AN5-21A
	A/R		WASHER	NAS1149F0563P
	2		NUT	MS21044N5
15	1		PLATE – BEARING UPPER	21A06166-001
16	1		NOSE SPRING (3000)	30A06655-001
17	2		NUT PLATE	F22NA1-048

WIPLINE MODEL 3000 FLOAT PARTS MANUAL



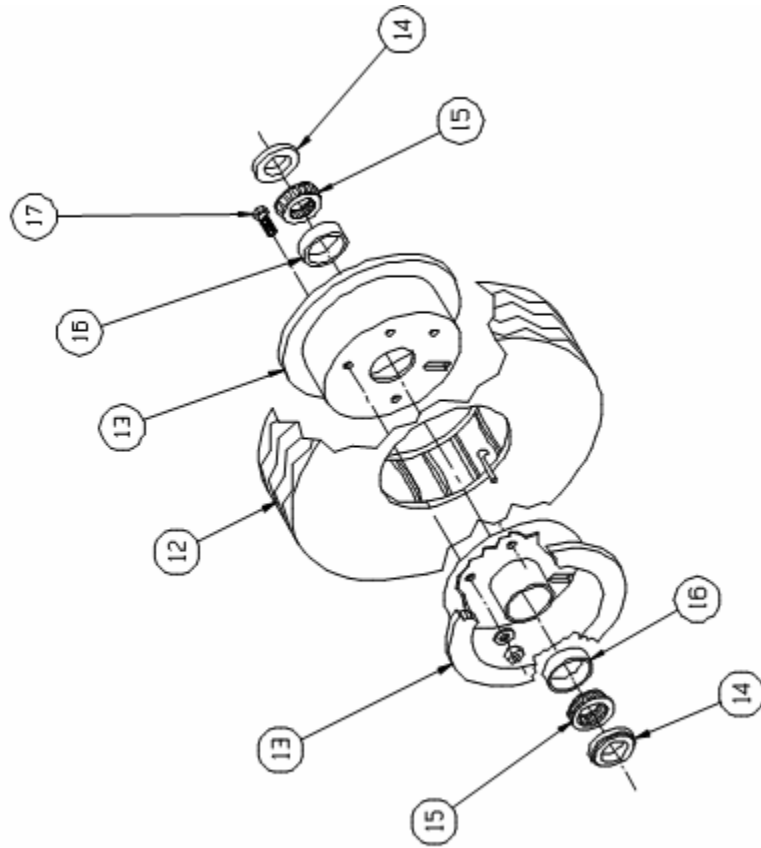
ASSEMBLY – NOSE GEAR – LOWER  
FIGURE 11

WIPLINE MODEL 3000 FLOAT PARTS MANUAL

ASSEMBLY – NOSE GEAR – LOWER, FIGURE 11

<u>REF NO.</u>	<u>NO.</u>	<u>REQ.</u>	<u>PART DESCRIPTION</u>	<u>PART NO.</u>
1	1		PIVOT BLOCK - NOSE GEAR	21A06318-005
2	1		SPRING BLOCK	21A06194-005
3	1		PRESSURE SPRING	21A06705-005
4	1		PRESSURE PLATE	21A06160-053
5	1		FRICTION CUP	21A06475-006
6	1		1/4" CHROME BALL BEARING	9528K15
7	1		BOLT	MS16997-60
8	1		1/4-20 NUT	MS35649-2252
9	4		SOCKET HEAD CAP SCREW	NAS1352-3-18P
10	4		WASHER STAR	MS35333-39
11	1		MODIFIED BOLT	30A06702-016
12	2		BOLT	AN5-15A
13	2		BOLT	AN5-17A
15	1		SPRING NOSE GEAR (3000)	30A06655-001
16	1		BEARING PLATE, LOWER, NOSE SPRING	21A06237-001
17	1		ASS"Y - PIVOT & FORK- NOSE GEAR	30A06000-024
18	1		TOW HOOK NOSE GEAR	21A06213-006
19	1		THRUST WASHER	3A06602-001
20	1		NOSE WHEEL PLUNGER	21A06605-002
21	1		SPRING	M62-350
22	2		COMMON GREASEZERK	1095K41
23	1		Nut	MS21044N4
24	2		WASHER	NAS1149D0463J
25	4		WASHER	NAS1149F0563P
26	4		WASHER	NAS1149F0532P
27	4		Nut	MS21044N5
28	1		O-RING	AN6227-9
31	1		MODIFIED WASHER	3A06702-003
32	1		BOLT - NOSE WHEEL AXLE	3A06702-002
33	1		PIN, ANTIROTATION	3A06476-001
34	1		WASHER	NAS1149D0863J
35	1		NUT	MS21083N8
36	2		SPACER - NOSE WHEEL - SMALL FLOAT	3A06259-001

WIPLINE MODEL 3000 FLOAT PARTS MANUAL



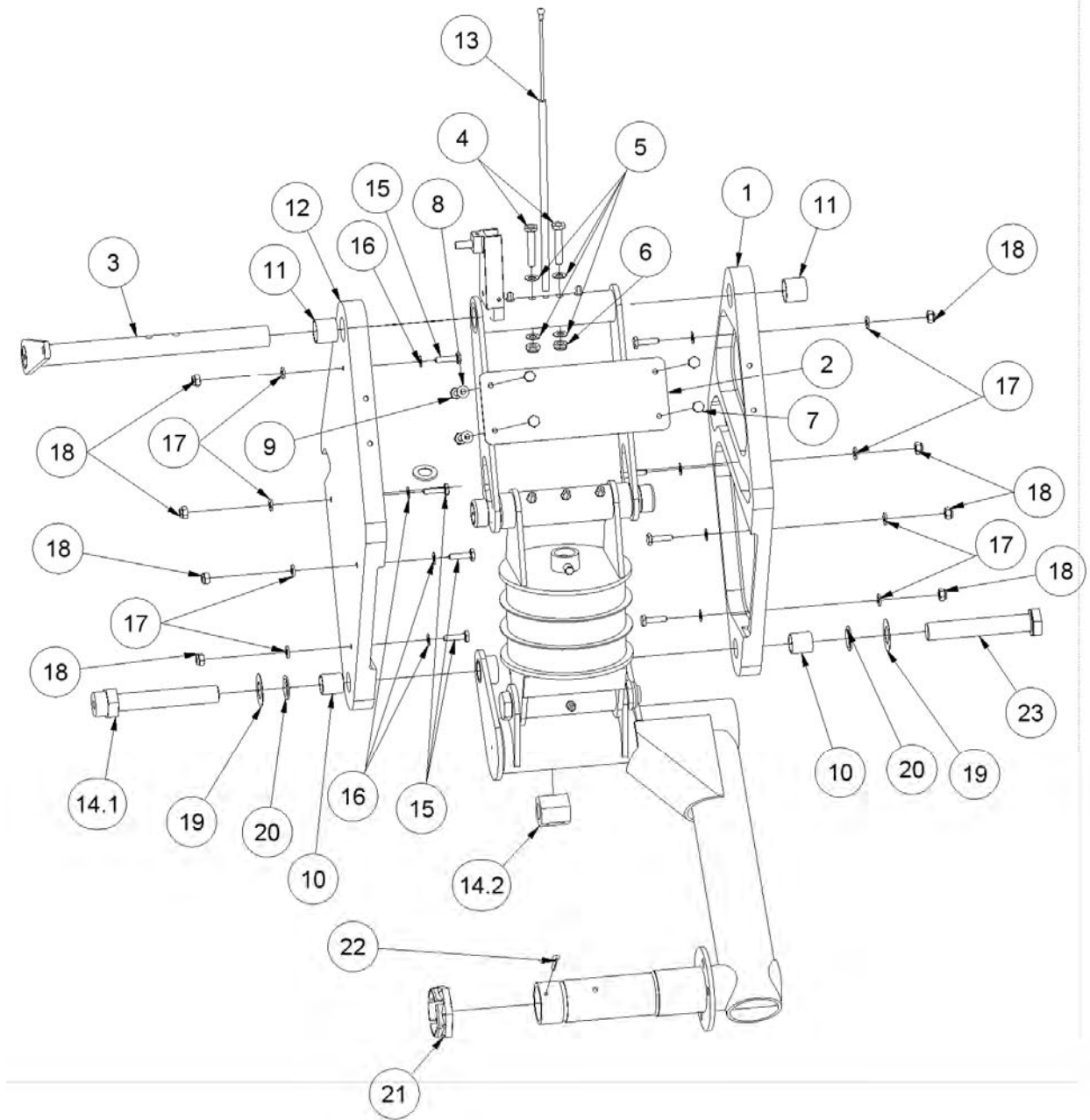
ASSEMBLY - NOSE WHEEL  
FIGURE 12

WIPLINE MODEL 3000 FLOAT PARTS MANUAL

ASSEMBLY – NOSE WHEEL, FIGURE 12

<u>REF NO.</u>	<u>NO.REQ.</u>	<u>PART DESCRIPTION</u>	<u>PART NO.</u>
12	1	TIRE	3.50 X 4, 4 PLY
	1	TUBE	4.10/3.50 X 4
13	1	WHEEL ASSEMBLY	D-30380
	1	GASKET (Between wheel halves)	068-30373
14	2	SPACER	3A06259-001
15	2	BEARING CONE	4050
		BEARING CONE, CHROME (OPT.)	4050CP
16	2	BEARING CUP	4138
		BEARING CUP, CHROME (OPT.)	4138CP
17	3	BOLT – WHEEL HALF	AN4-7A
	6	WASHER	NAS1149F0432P
	3	NUT	MS21044N4

WIPLINE MODEL 3000 FLOAT PARTS MANUAL



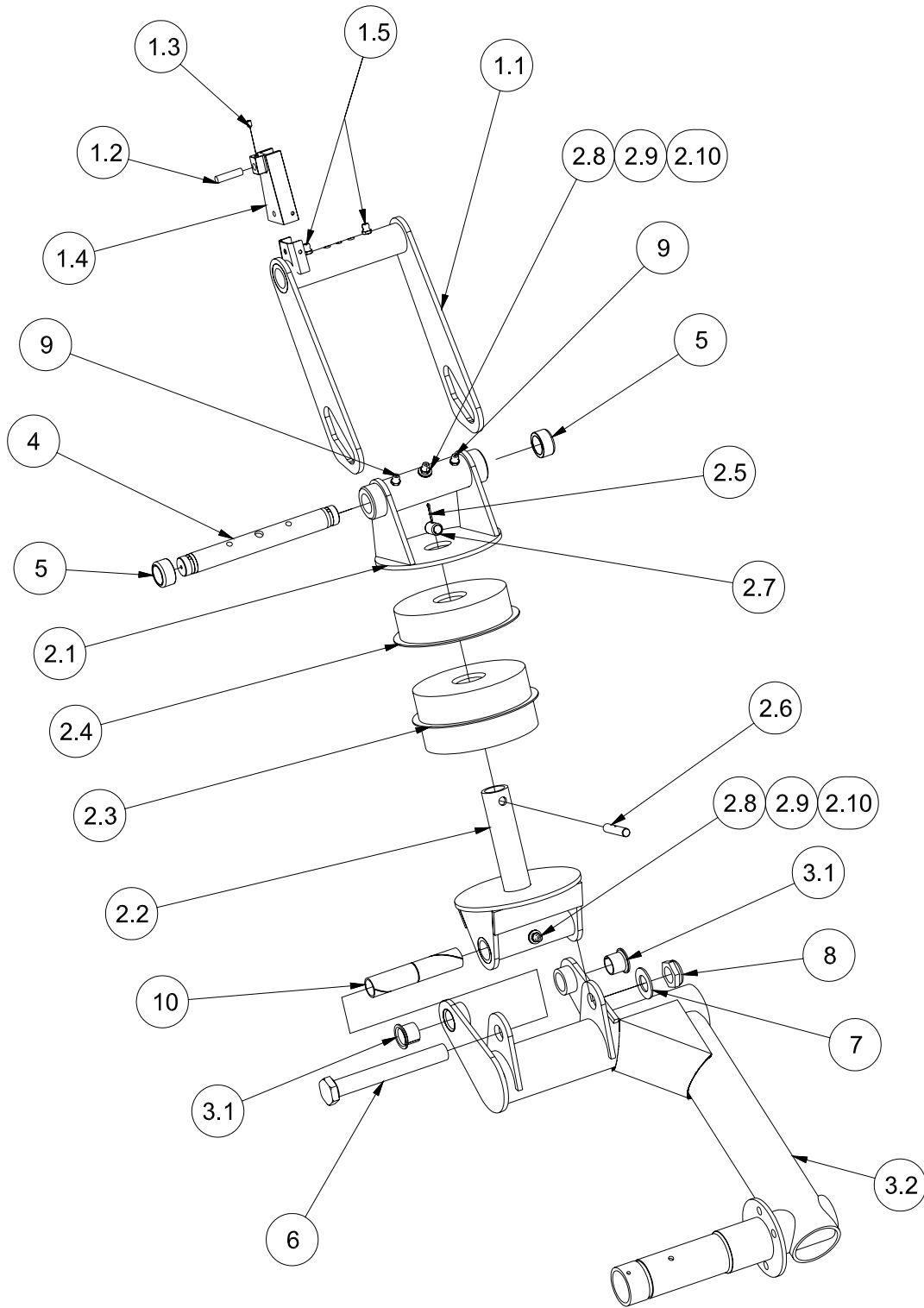
MAIN GEAR INSTALLATION  
FIGURE 13

WIPLINE MODEL 3000 FLOAT PARTS MANUAL

INSTALLATION – MAIN GEAR RETRACTION, FIGURE 13

<u>REF NO.</u>	<u>NO. REQ.</u>	<u>PART DESCRIPTION</u>	<u>PART NO.</u>
1	1	TRACK - MAIN GEAR - RIGHT	30A05114-008
2	1	SPACING PLATE	30A05003-085
3	1	ASS"Y - ARM RETRACT	30A05000-039
4	2	BOLT	NAS6204-17
5	4	WASHER	NAS1149F0432P
6	2	NUT	MS21083N4
7	4	BOLT	AN3-5A
8	4	WASHER	NAS1149D0316J
9	4	Nut	MS21044N3
10	2	BUSHING	10DU12
11	2	BUSHING	12DU12
12	1	TRACK - MAIN GEAR - LEFT	30A05114-007
13	1	ASS"Y - ARM - GEAR INDICATOR	30A05000-027
14	1	MAIN GEAR BOLT ASS"Y - LOWER	30A05000-038
14.1	1	MODIFIED BOLT - DRAG LINK ATTACH	30A05558-001
14.2	1	COUPLING - MAIN GEAR	30A04574-001
15	8	BOLT	AN3-6A
16	8	WASHER	NAS1149D0316J
17	8	WASHER	NAS1149D0363J
18	8	Nut	MS21044N3
19	2	WASHER	NAS1149D1016J
20	2	SEALING WASHER	93783A033
21	1	NUT, AXLE	MS21025-24
22	1	COTTER PIN	MS24665-351
23	1	BOLT	NAS6210-52

WIPLINE MODEL 3000 FLOAT PARTS MANUAL



MAIN GEAR RETRACTION  
FIGURE 14

WIPLINE MODEL 3000 FLOAT PARTS MANUAL

MAIN GEAR RETRACTION, FIGURE 14

<u>REF NO.</u>	<u>NO. REQ.</u>	<u>PART DESCRIPTION</u>	<u>PART NO.</u>
1	1	ASS"Y - ARM RETRACT - DRAG LINK	30A05000-042
1.1	1	ASS"Y - ARM RETRACT - DRAG LINK	30A05000-041
1.2	1	CYLINDRICAL MAGNET	4102
1.3	1	SET SCREW	1032 NFX 3/16
1.4	1	PROX. SWITCH HOLDER	30A05214-007
1.5	2	COMMON GREASEZERK	1095K41
2	1	ASS"Y - SHOCK STRUT (for Cessna 180 only) ASS"Y - SHOCK STRUT (for Cessna 185 only)	30A04000-100 34A04000-101
2.1	1	ASSEMBLY - END SHOCK STRUT - UPPER	30A04000-093
2.2	1	ASSEMBLY - END SHOCK STRUT - LOWER	30A04000-120
2.3	1	DUAL BUSHING ASSEMBLY (for Cessna 180 only) DUAL BUSHING ASSEMBLY (for Cessna 185 only)	1002089 1002090
2.4	1	BUSHING ASSEMBLY (for Cessna 180 only) BUSHING ASSEMBLY (for Cessna 185 only)	1001102 1001102
2.5	1	COTTER PIN	MS24665-151
2.6	1	PIN - RETAINING, SHOCK STRUT	30A04476-004
2.7	1	SLEEVE - SHOCK STRUT RETAINER	30A04459-002
2.8	2	COMMON GREASEZERK	1095K41
2.9	2	WASHER	NAS1149D0416J
2.10	2	WASHER	NAS1149D0463J
3	1	DRAG LINK - MAIN GEAR	30A04000-091
3.1	2	BUSHING	10FDU10

WIPLINE MODEL 3000 FLOAT PARTS MANUAL

MAIN GEAR RETRACTION, FIGURE 14

<u>REF NO.</u>	<u>NO. REQ.</u>	<u>PART DESCRIPTION</u>	<u>PART NO.</u>
4	1	SHAFT - AXLE - SHOCK STRUT	30A04454-007
5	2	ROLLER, SHOCK STRUT - RETRACT	21A05520-003
6	1	BOLT - DRAG LINK	30A05702-016
7	1	WASHER	NAS1149F1063P
8	1	NUT	MS21083N10
9	2	COMMON GREASEZERK	1095K41
10	1	BUSHING	30A04475-006

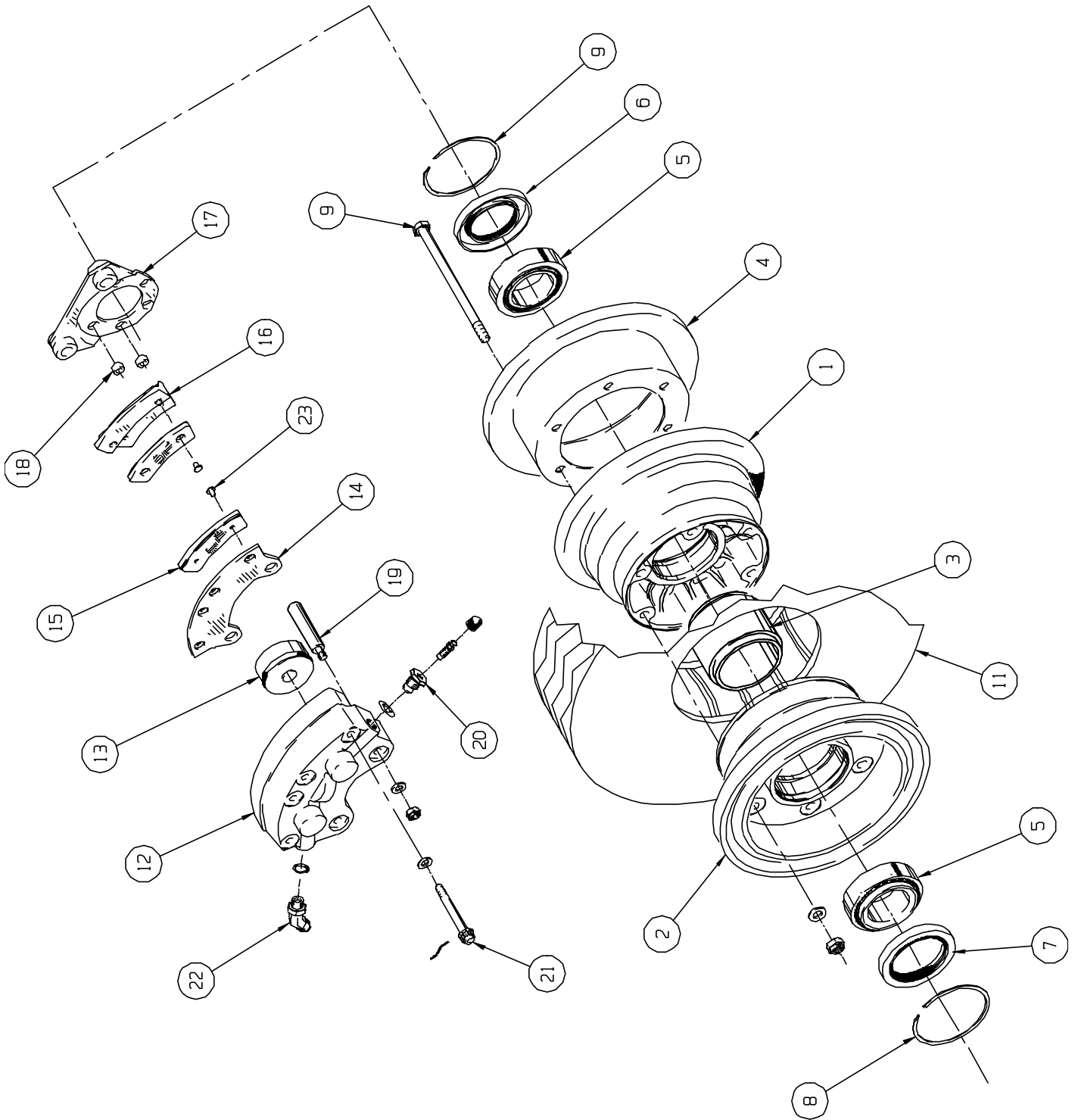


WIPLINE MODEL 3000 FLOAT PARTS MANUAL

MAIN GEAR HYDRAULIC INSTALLATION, FIGURE 15

<u>REF</u> <u>NO.</u>	<u>NO.</u> <u>REQ.</u>	<u>PART DESCRIPTION</u>	<u>PART NO.</u>
1	1	HYDRAULIC CYLINDER ASS"Y	1002573
2	2	HAMLIN MAGNETIC SWITCH	Hamlin 59135-20
3	4	NUT	AN365-440
4	4	SCREW, MACHINE	AN515-4R6
5	1	EYE BOLT	AN42-4A
6	1	WASHER	AN960-PD10
7	1	WASHER	AN970-3
8	1	NUT	AN365-1032
9	1	SPRING - GEAR	21A05525-008
10	1	BOLT	AN5-12A
11	2	WASHER	NAS1149F0563P
12	1	WASHER	NAS1149D0516J
13	1	Nut	MS21044N5
14	1	CLEVIS - RETRACT ARM - MAIN GEAR (3000)	30A05460-001
15	1	Bolt	AN6-13A
16	2	WASHER	NAS1149F0632P
17	2	ELBOW	AN822-4D
18	1	SPACER - HYDRAULIC CYLINDER	30A05252-001
19	1	NUT	AN316-7R
20	1	WASHER - COUNTER SUNK	MS20002C8

WIPLINE MODEL 3000 FLOAT PARTS MANUAL



ASSEMBLY - MAIN GEAR WHEEL  
FIGURE 16

WIPLINE MODEL 3000 FLOAT PARTS MANUAL

ASSEMBLY – MAIN GEAR WHEEL, FIGURE 16

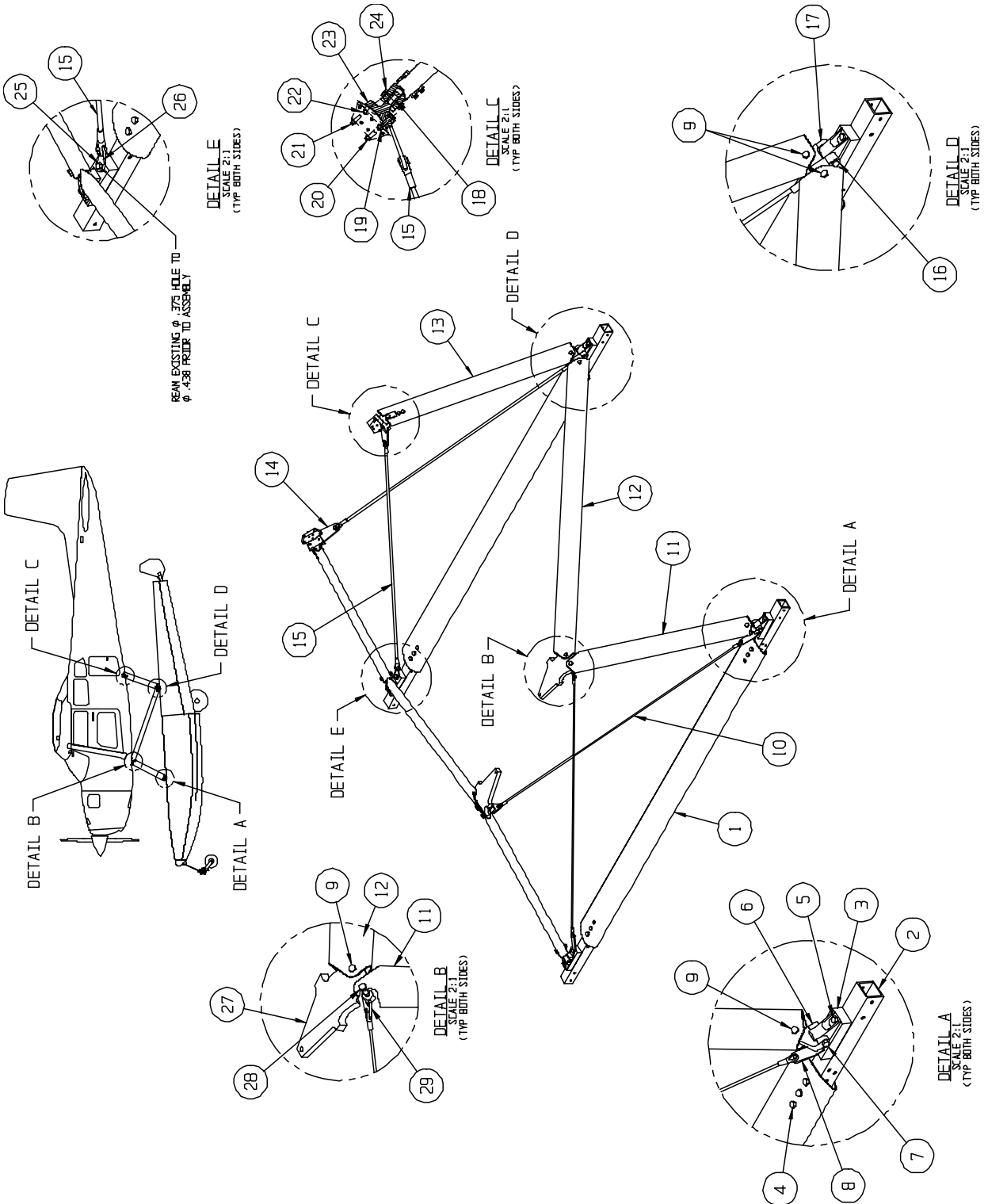
<u>REF NO.</u>	<u>NO.</u>	<u>REQ.</u>	<u>PART DESCRIPTION</u>	<u>PART NO.</u>
1	1		WHEEL ASS'Y (W/ TIRE & TUBE)	3A04000-002
2	1		WHEEL ASS'Y (BOTH HALVES)	3A04000-060
3	1		SPACER – GREASE DAM	067-14700
4	1		DISC – BRAKE	164-24500
5	2		CUP – BEARING	13836CP
	2		CONE – BEARING	13889CP
6	1		SEAL – GREASE	473232
7	1		SEAL – GREASE	472439
8	2		RING - SNAP	155-14300
9	6		BOLT	AN5-35A
	6		WASHER	NAS1149F0563P
	6		NUT	MS210425
10	1		NAMEPLATE – “WARNING” (NOT SHOWN)	166-20000
	1		NAMEPLATE (NOT SHOWN)	166-19700
11	1		TIRE	6.00 X 6, 8 PLY
	1		TUBE	6.00 X 6
12	1		BRAKE ASS'Y	30A04000-103 RH 30A04000-102 LH
13	2		PISTON	062-10700
	1		O-RING	MS28775-222
14	1		PLATE - PRESSURE	063-01100

WIPLINE MODEL 3000 FLOAT PARTS MANUAL

ASSEMBLY – MAIN GEAR WHEEL, FIGURE 16

<u>REF NO.</u>	<u>NO.</u>	<u>REQ.</u>	<u>PART DESCRIPTION</u>	<u>PART NO.</u>
15	2		LINING - BRAKE	066-10500
16	1		PLATE – BACK	064-01500
17	1		PLATE - TORQUE	075-20700
18	1		BUSHING	145-01000
19	2		BOLT - ANCHOR	069-03100
	2		WASHER	NAS1149F0463P
	2		NUT	MS21044N4
20	1		SEAT - BLEEDER	081-00200
	1		O-RING	MS28775-012
	1		SCREW – BLEEDER	079-00300
	1		CAP – BLEEDER	183-00100
21	4		BOLT	MS21250H04026
	4		WASHER	MS20002C4
			A/R LOCKWIRE	MS20995-C32
22	1		FITTING	104-04700
	1		O-RING	MS28775-012
23	4		RIVET	105-00200

WIPLINE MODEL 3000 FLOAT PARTS MANUAL



INSTALLATION – STRUTS, WIRES AND SPREADER BARS  
 FIGURE 17 (Service Kit 66 Info. Pg. 85)

WIPLINE MODEL 3000 FLOAT PARTS MANUAL

INSTALLATION – STRUTS, WIRES, & SPREADER BARS, FIGURE 17

<u>REF NO.</u>	<u>NO.</u>	<u>REQ.</u>	<u>PART DESCRIPTION</u>	<u>PART NO.</u>
1	2		SPREADER BAR	30A03000-031
2	2		TUBE – SPREADER BAR – L.	30A03000-029
	2		TUBE – SPREADER BAR – R.	30A03000-030
3	4		FLOAT DECK FITTING	30A02219-003
4	12		BOLT – SPREADER BAR ATTACH	AN6-30A
	24		WASHER	NAS1149FO663P
	12		NUT	MS21044N6
5	4		BOLT – OUTBOARD ATTACH	AN6-41A
	8		WASHER	NAS1149FO663P
	4		NUT	MS21044N6
6	2		FITTING – LOWER FRONT	30A02201-017
7	2		BOLT – FITTING ATTACH	AN7-27A
	4		WASHER	NAS1149FO763P
	2		NUT	MS20365-720A
8	2		WIRE PULL - FWD	30A02462-016
	2		BOLT – ATTACH	AN6-43A
	4		WASHER	NAS1149FO663P
	2		NUT	MS21044N6
9	8		BOLT – STRUT ATTACH	AN7-20A
	16		WASHER	NAS1149FO763P
	8		NUT	MS20365-720A
10	2		ASS'Y – FRONT DRAG WIRE	3A02000-044
	2		PIN - COTTER	MS24665-301
	2		PIN - CLEVIS	MS20392-5C21

WIPLINE MODEL 3000 FLOAT PARTS MANUAL

INSTALLATION – STRUTS, WIRES, & SPREADER BARS, FIGURE 17

<u>REF NO.</u>	<u>NO.</u>	<u>REQ.</u>	<u>PART DESCRIPTION</u>	<u>PART NO.</u>
	1		CLEVIS “L”	AN665-80LAS *
	1		CLEVIS “R”	AN665-80RAS *
	1		CHECK NUT “L”	AN316C6L
	1		CHECK NUT “R”	AN316C6R
11	1		ASS’Y – FWD STRUT – LH *	30A02000-213
	1		ASS’Y – FWD STRUT – RH *	30A02000-234
12	2		ASS’Y – CENTER STRUT	34A02000-205
13	1		ASS’Y – REAR STRUT - LH *	34A02000-207
	1		ASS’Y – REAR STRUT – RH *	34A02000-206
14	1		WIRE PULL – UPPER REAR - LH	4A02079-003
	1		WIRE PULL – UPPER REAR – RH	4A02079-004
15	2		ASS’Y – REAR DRAG WIRE	1002153
	2		PIN - COTTER	MS24665-370
	2		PIN - CLEVIS	MS20392-6C25
	1		CLEVIS “L”	AN665-115LS *
	1		CLEVIS “R”	AN665-115RS *
	1		CHECK NUT “L”	AN316C7L
	1		CHECK NUT “R”	AN316C7R
16	2		BOLT – RH LOWER – FITTING ATTACH	AN7-32A
	4		WASHER	NAS1149F0763P
	2		NUT	MS20365-720A
17	1		FITTING – AFT LOWER - LH	34A02207-007
	1		FITTING – AFT LOWER – RH	34A02207-006
18	2		BEARING - STRUT	COM-8

\* “S” DENOTES STAINLESS STEEL

\* PART NUMBERS CHANGE IF SERVICE KIT #66 IS INSTALLED, GO TO PAGE 84

WIPLINE MODEL 3000 FLOAT PARTS MANUAL

INSTALLATION – STRUTS, WIRES, & SPREADER BARS, FIGURE 17

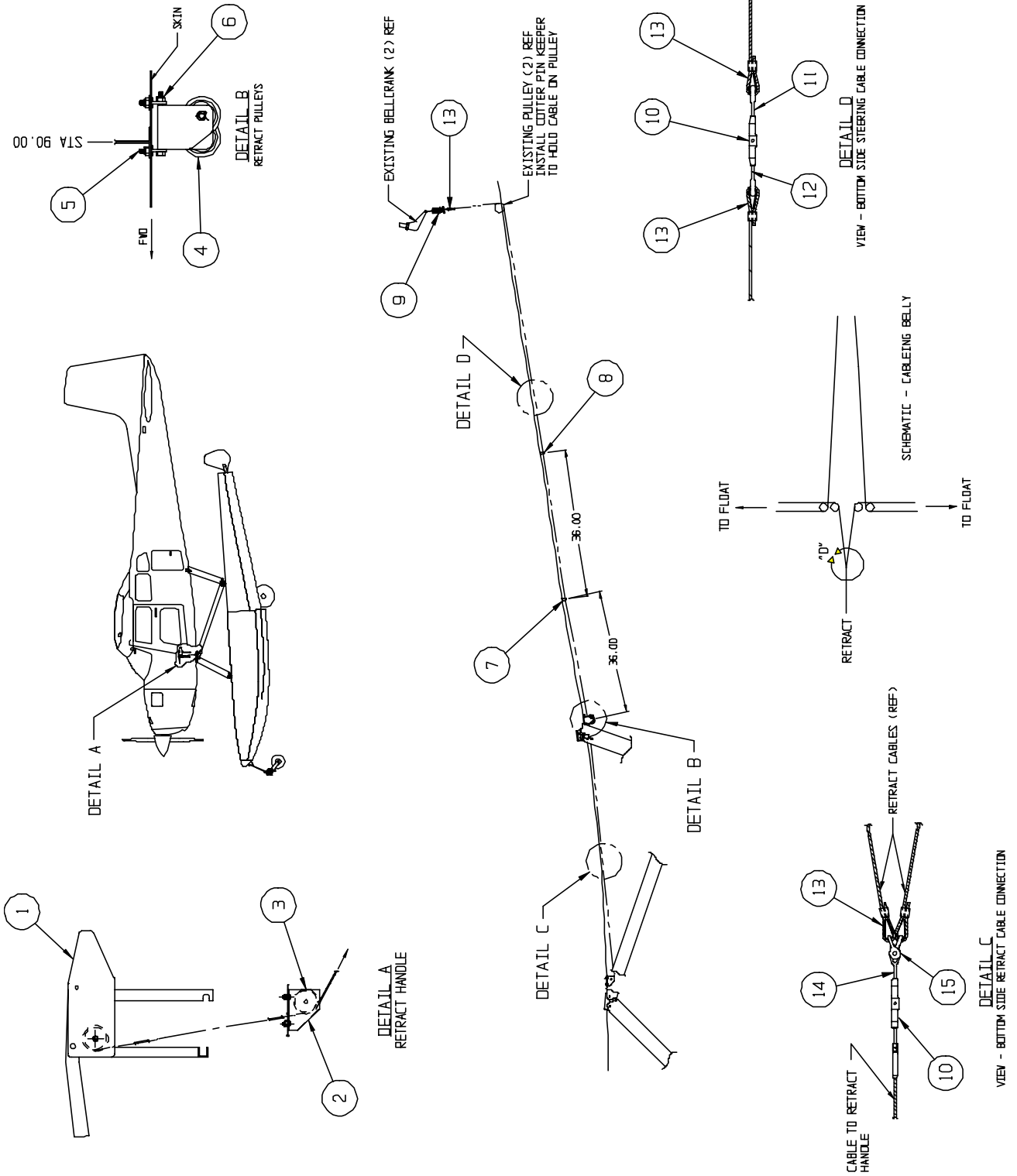
<u>REF NO.</u>	<u>NO.</u>	<u>REQ.</u>	<u>PART DESCRIPTION</u>	<u>PART NO.</u>
	2		RETAINER RING	N5000-100H
19	2		BOLT – FITTING ATTACH	AN5-17A
	2		WASHER	NAS1149F0563P
	2		NUT	MS21044N5
20	2		BOLT – STRUT ATTACH	AN5-33A
	2		WASHER	NAS1149F0563P
	2		NUT	MS21044N5
21	2		BOLT – STRUT ATTACH	AN5-31A
	2		WASHER	NAS1149F0563P
	2		NUT	MS21044N5
22	2		BOLT – FITTING ATTACH	AN5-12A
	2		WASHER	NAS1149F0563J
	2		NUT	MS21044N5
23	1		FITTING – UPPER REAR - LH	4A02370-001
	1		FITTING – UPPER REAR - RH	4A02370-002
24	2		BOLT - ATTACH	AN8-23A
	4		WASHER	NAS1149FO863P
	2		NUT	MS21044N8
25	2		BOLT – REAR LUG ATTACH	AN7-43A
	4		WASHER	NAS1149FO763P
	2		NUT	MS20365-720A
26	2		WIRE PULL – REAR	34A02496-003
27	1		FITTING – UPPER FWD – LH	34A02062-015
	1		FITTING – UPPER FWD – RH	34A02062-014
28	2		BOLT – UPPER WIRE ATTACH	AN7-20A

WIPLINE MODEL 3000 FLOAT PARTS MANUAL

INSTALLATION – STRUTS, WIRES, & SPREADER BARS, FIGURE 17

<u>REF NO.</u>	<u>NO.</u>	<u>REQ.</u>	<u>PART DESCRIPTION</u>	<u>PART NO.</u>
	2		WASHER	NAS1149FO763P
29	1		FITTING – UPPER DRAG WIRE - LH	4A02000-071
	1		FITTING – UPPER DRAG WIRE – RH	4A02000-072
11	1		ASS'Y – FWD STRUT - LH	1002159
	1		ASS'Y – FWD STRUT – RH	1002132
13	1		ASS'Y – REAR STRUT - LH	1002159
	1		ASS'Y – REAR STRUT - RH	1002137

WIPLINE MODEL 3000 FLOAT PARTS MANUAL



INSTALLATION – STEERING AND RETRACT SYSTEM  
FIGURE 18

WIPLINE MODEL 3000 FLOAT PARTS MANUAL

INSTALLATION – STEERING AND RETRACT SYSTEM, FIGURE 18

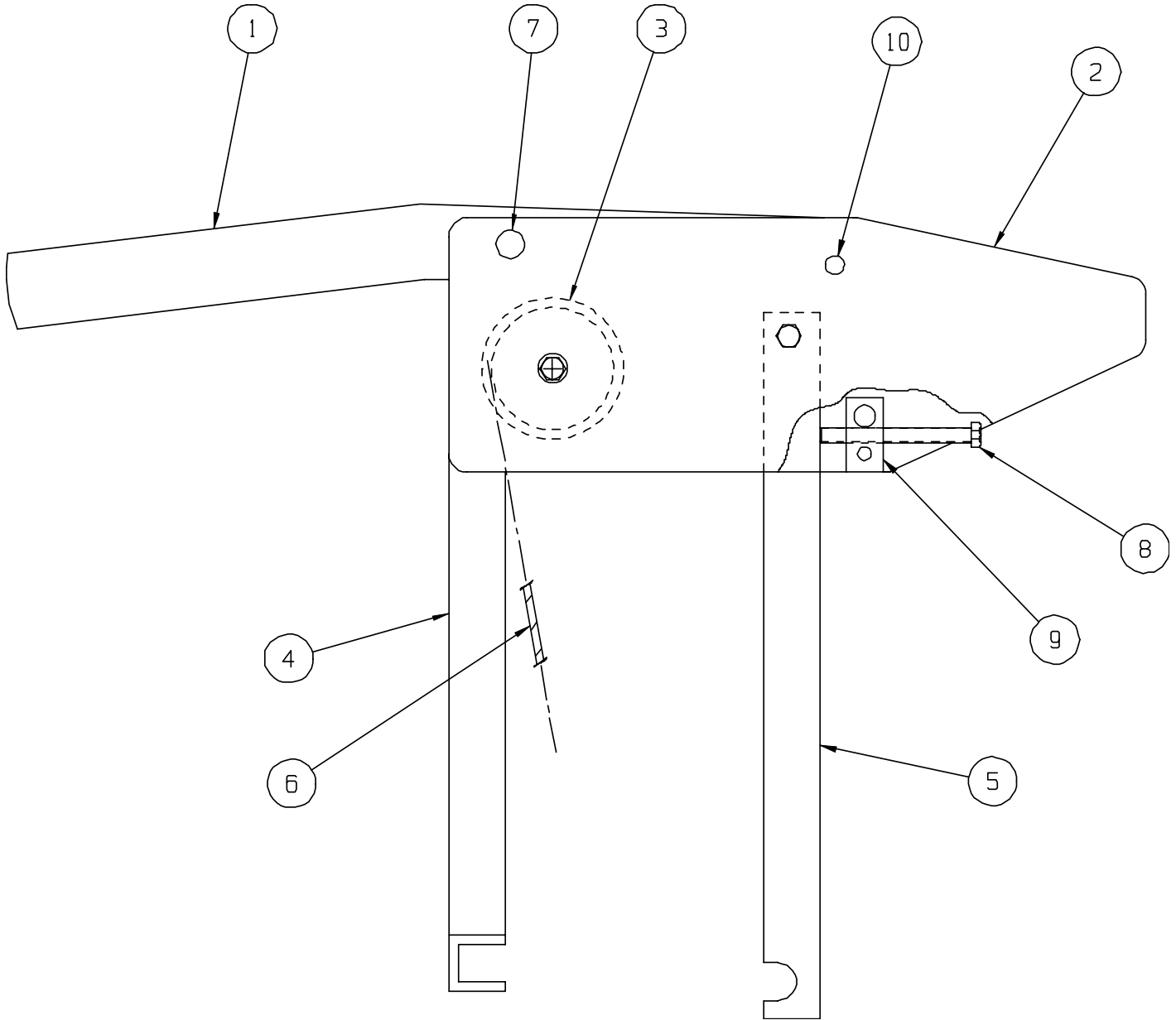
<u>REF NO.</u>	<u>NO.</u>	<u>REQ.</u>	<u>PART DESCRIPTION</u>	<u>PART NO.</u>
1	1		ASS'Y – RETRACT HANDLE COMPLETE (SEE FIGURE 16)	3A08000-006
2	1		PULLEY BRACKET	3A08151-046
	4		SCREW – ATTACH	AN526-1032R8
	4		WASHER	NAS1149D0316J
	4		NUT	MS21044N3
3	1		PULLEY	MS20219-2
	1		BOLT	AN4-7A
	1		WASHER	NAS1149D0463J
	1		NUT	MS21044N4
4	4		PULLEY BRACKET	4A08151-093
	4		PULLEY	MS20219-2
	4		BOLT	AN4-10A
	8		WASHER	NAS1149D0463J
	4		NUT	MS21044N4
5	8		EYEBOLT	AN42-4A
	8		WASHER	NAS1149D0363J
	4		WASHER	AN970-3
6	8		NUT	MS21044N3
	4		BOLT – BRACKET TO EYEBOLT	AN3-25A
	4		WASHER	NAS1149D0316J
7	4		NUT	MS21044N3
	2		CABLE GUIDE HOLDER	4A08153-010
8	2		GUIDE	3A08601-003
	2		CABLE GUIDE HOLDER	4A08153-009
9	2		GUIDE	3A08601-003

WIPLINE MODEL 3000 FLOAT PARTS MANUAL

INSTALLATION – STEERING AND RETRACT SYSTEM, FIGURE 18

<u>REF NO.</u>	<u>NO.</u>	<u>REQ.</u>	<u>PART DESCRIPTION</u>	<u>PART NO.</u>
10	2		SPRING	072016-1
11	3		TURNBUCKLE - BARREL	MS21251B3S
12	2		EYE - TERMINAL	AN170-16RS
13	2		EYE - TERMINAL A/R THIMBLE	MS21255-3LS AN100-3
14			A/R NICOPRESS	18-2-G
15	1		FORK – TERMINAL	MS21252-3RS
	2		SHACKLE	MS20115-3
	1		PIN – CLEVIS	MS20392-2-19

WIPLINE MODEL 3000 FLOAT PARTS MANUAL



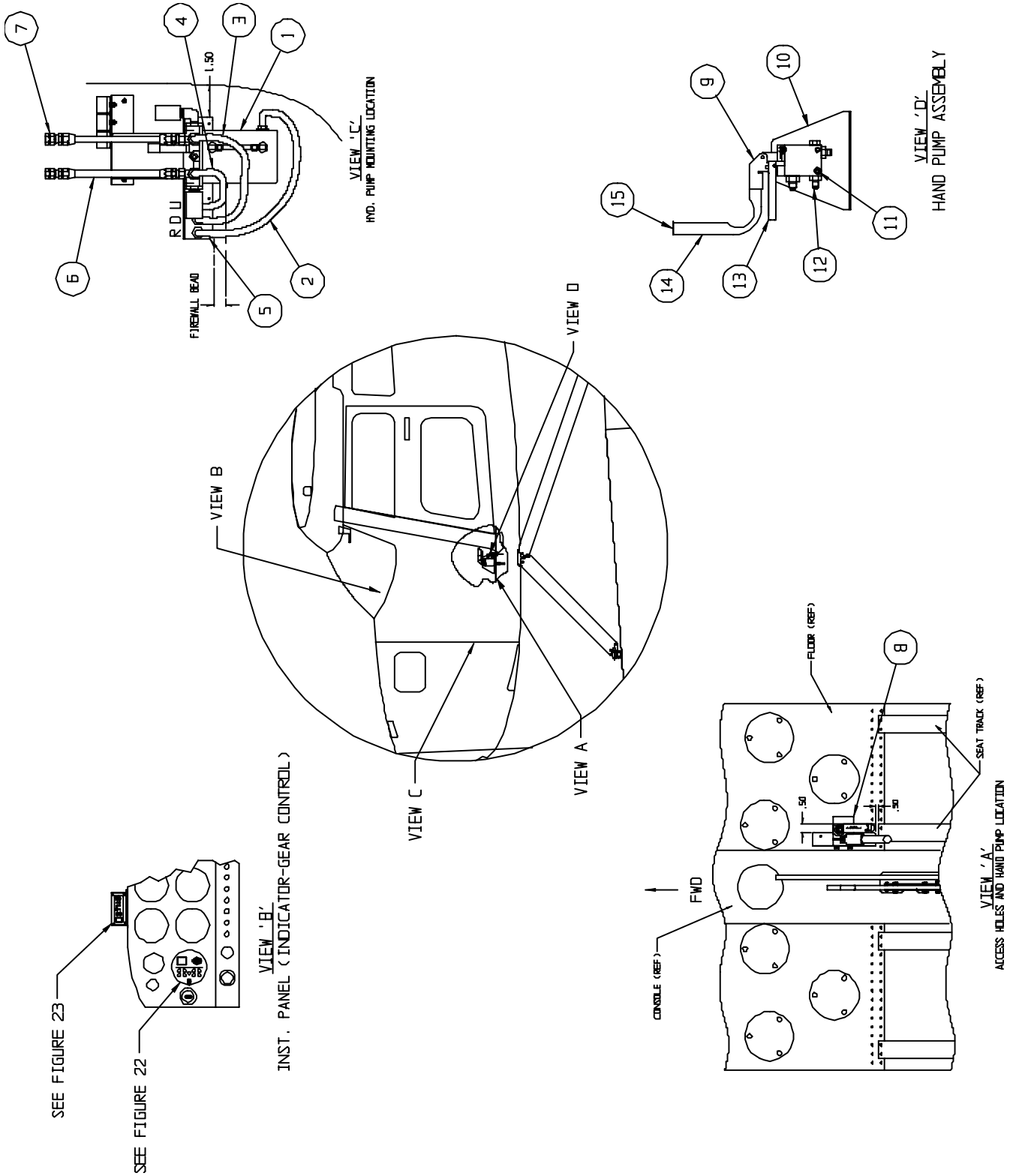
ASSEMBLY - RETRACT HANDLE  
FIGURE 19

WIPLINE MODEL 3000 FLOAT PARTS MANUAL

ASSEMBLY – RETRACT HANDLE, FIGURE 19

<u>REF NO.</u>	<u>NO.</u>	<u>REQ.</u>	<u>PART DESCRIPTION</u>	<u>PART NO.</u>
1	1		ASS'Y – RETRACT HANDLE	3A08000-006
2	1		HANDLE	3A08414-001
3	2		SIDE PLATE	3A08003-017
	1		PULLEY	MS20219-2
	1		BOLT – ATTACH	AN4-10A
	2		WASHER	NAS1149DO463P
	2		WASHER	NAS1149DO432P
4	1		NUT	H10-4
5	1		LEG - FWD	3A08000-007
6	1		LEG - AFT	3A08415-001
7	1		CABLE ASS'Y	3A08000-051
8	1		CABLE - SWIVEL	4A08506-002
9	1		SCREW - ADJUSTING	10-32 X 2 S.S. HEX
10	1		BLOCK – ADJUSTING	3A08061-003
	2		PIVOT PIN	3A08702-006

WIPLINE MODEL 3000 FLOAT PARTS MANUAL



INSTALLATION – HYDRAULIC SYSTEM  
FIGURE 20

WIPLINE MODEL 3000 FLOAT PARTS MANUAL

INSTALLATION – HYDRAULIC SYSTEM, FIGURE 20

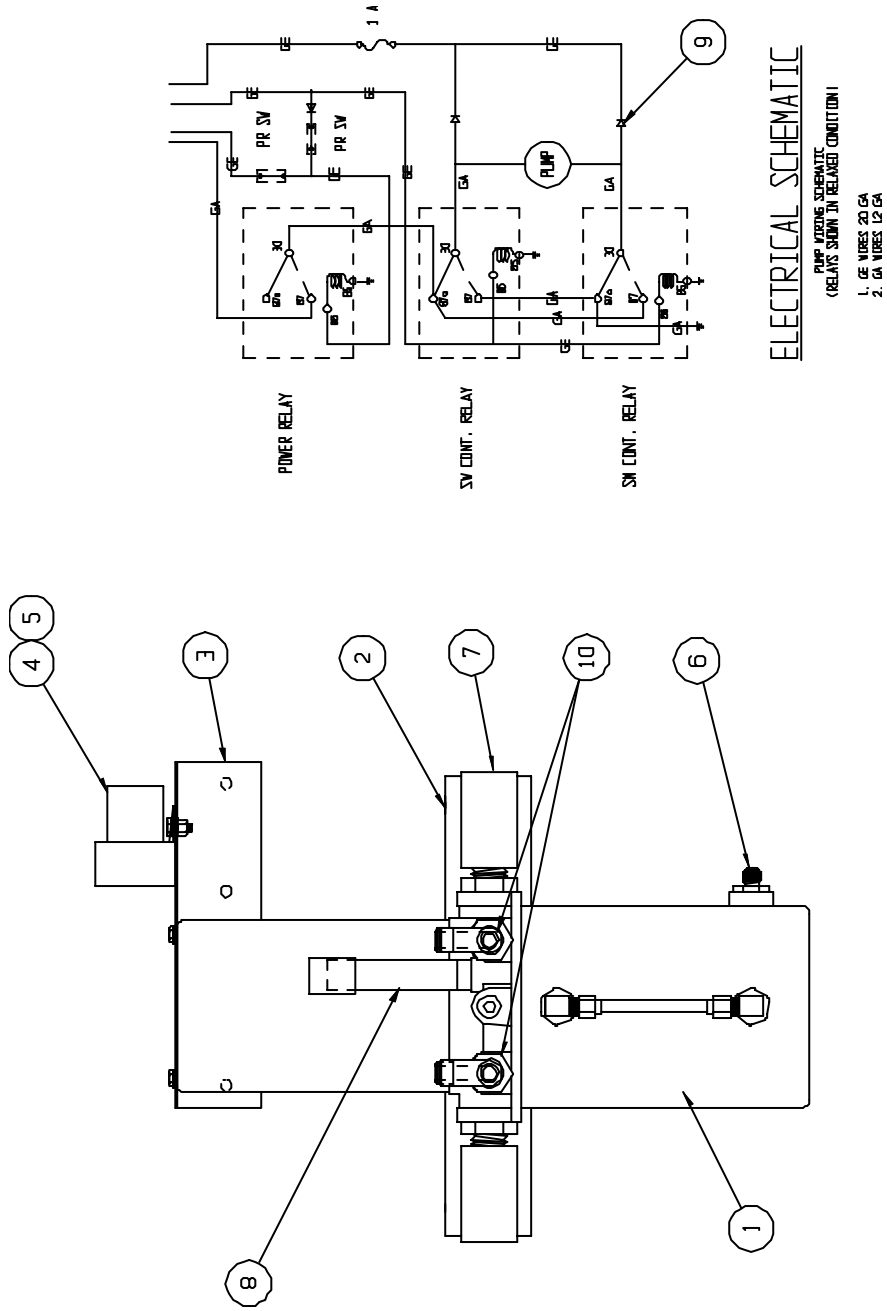
<u>REF NO.</u>	<u>NO.</u>	<u>REQ.</u>	<u>PART DESCRIPTION</u>	<u>PART NO.</u>
1	1		ASS'Y – HYDRAULIC PUMP (12V)	34A09000-266
2	1		ASS'Y – HYDRAULIC PUMP (24V)	34A09000-281
3	1		ASS'Y – HYDRAULIC HOSE	34A09000-246
4	1		ASS'Y – HYDRAULIC HOSE	34A09000-247
5	1		ASS'Y – HYDRAULIC HOSE	34A09000-248
	1		ANGLE – PUMP MOUNT	34A09357-074
	4		RIVET - ATTACH	CR3243-4-3
	2		SPACER	3A09271-001
	2		BOLT - ATTACH	3A09702-012
6	4		WASHER	NAS1149FO663P
7	2		ASS'Y – HOSE ACCUMULATOR	8A09000-048
8	2		PLUG	AN806-4D
9	1		ASS'Y – HAND PUMP (COMPLETE)	34A09000-267
10	1		HAND PUMP ONLY	638203
11	1		BRACKET	34A09156-166
	3		CAP SCREW	5/16-18UNC-2B X .63
	3		WASHER	MS35333-40
12	3		WASHER	NAS1149FO563J
	3		UNION	AN815-4D
13	3		“O” RING	MS28775-011
14	1		ASS'Y – HANDLE SELECTOR	21A12000-052

WIPLINE MODEL 3000 FLOAT PARTS MANUAL

INSTALLATION – HYDRAULIC SYSTEM, FIGURE 20

<u>REF NO.</u>	<u>NO.</u>	<u>REQ.</u>	<u>PART DESCRIPTION</u>	<u>PART NO.</u>
15	1		HANDLE - PUMP	21A09396-001
	1		CAP PLUG	9283K13

WIPLINE MODEL 3000 FLOAT PARTS MANUAL



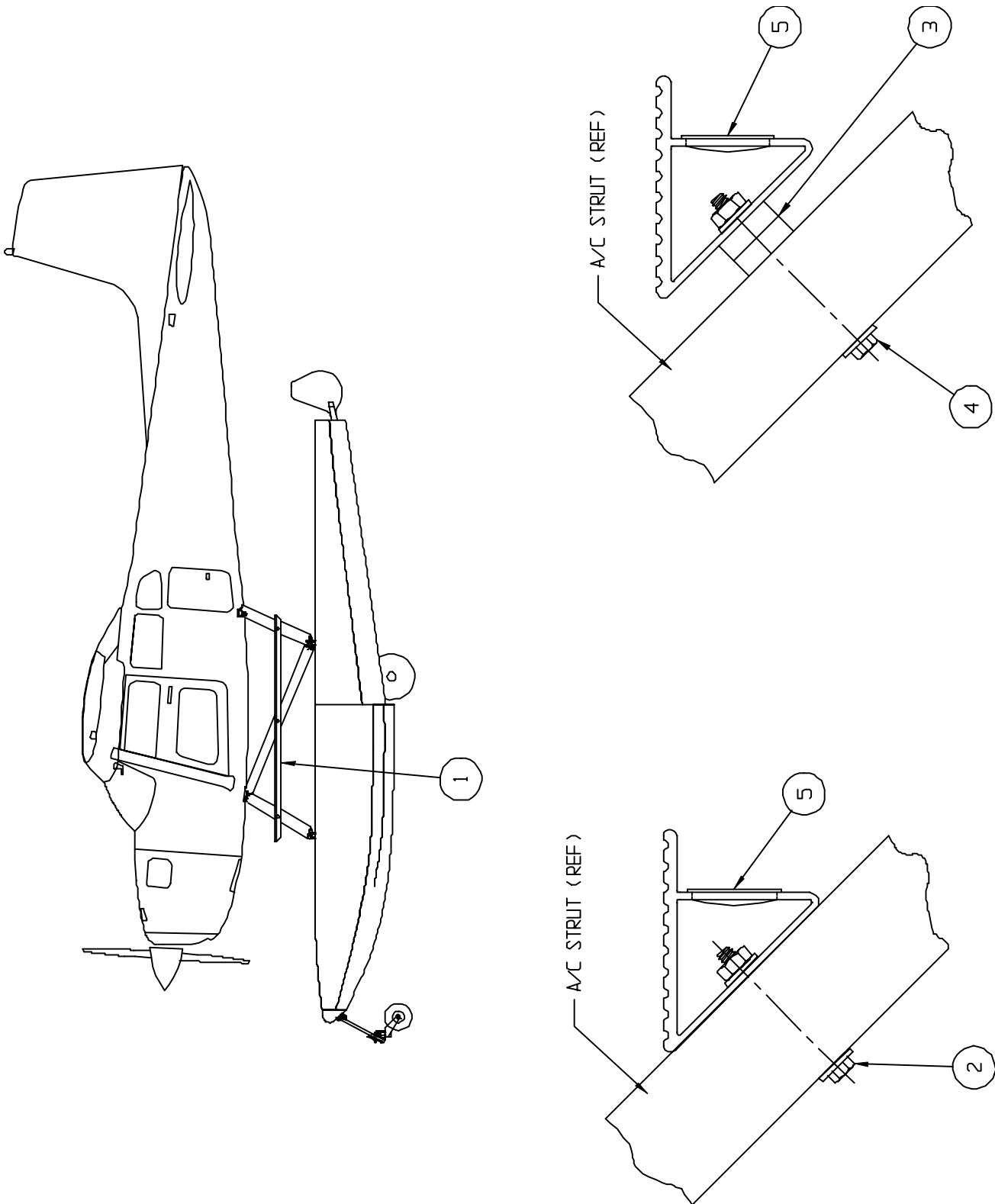
ASSEMBLY - HYDRAULIC PUMP  
 FIGURE 21

WIPLINE MODEL 3000 FLOAT PARTS MANUAL

ASSEMBLY – HYDRAULIC PUMP, FIGURE 21

<u>REF NO.</u>	<u>NO.</u>	<u>REQ.</u>	<u>PART DESCRIPTION</u>	<u>PART NO.</u>
1	1		HYDRAULIC PUMP 12V	21A09000-215
2	1		HYDRAULIC PUMP 24V	21A09000-282
	1		ANGLE – LOWER PUMP	21A09352-030
	2		CAP SCREW – ATTACH	MS16997-96
3	2		LOCK WASHER	3/8”
4	1		SUPPORT – TOP PUMP	21A09005-264
	3		RELAY – 24V	0-332-209-211
5	3		RELAY – 12V	0-332-209-137
	3		SOCKET – RELAY	BR05-FW
	15		TERMINAL	1-901-355-917
	3		BOLT – ATTACH	AN3-3A
	6		WASHER	NAS1149F0332P
6	3		NUT	MS21044N3
	1		FITTING	AN815-4D
7	1		“O” RING	MS28775-011
8	2		PRESSURE - SWITCH	20PS001EB700W500W
	1		STAND PIPE	21A09274-006
	1		“O” RING	MS28775-012
9	1		FILTER	6A09706-001
10	3		DIODE	IN4004
	2		NUT	AN924-4D
	2		“O” RING	MS28775-011
	2		FITTING “T”	AN804-4D

WIPLINE MODEL 3000 FLOAT PARTS MANUAL



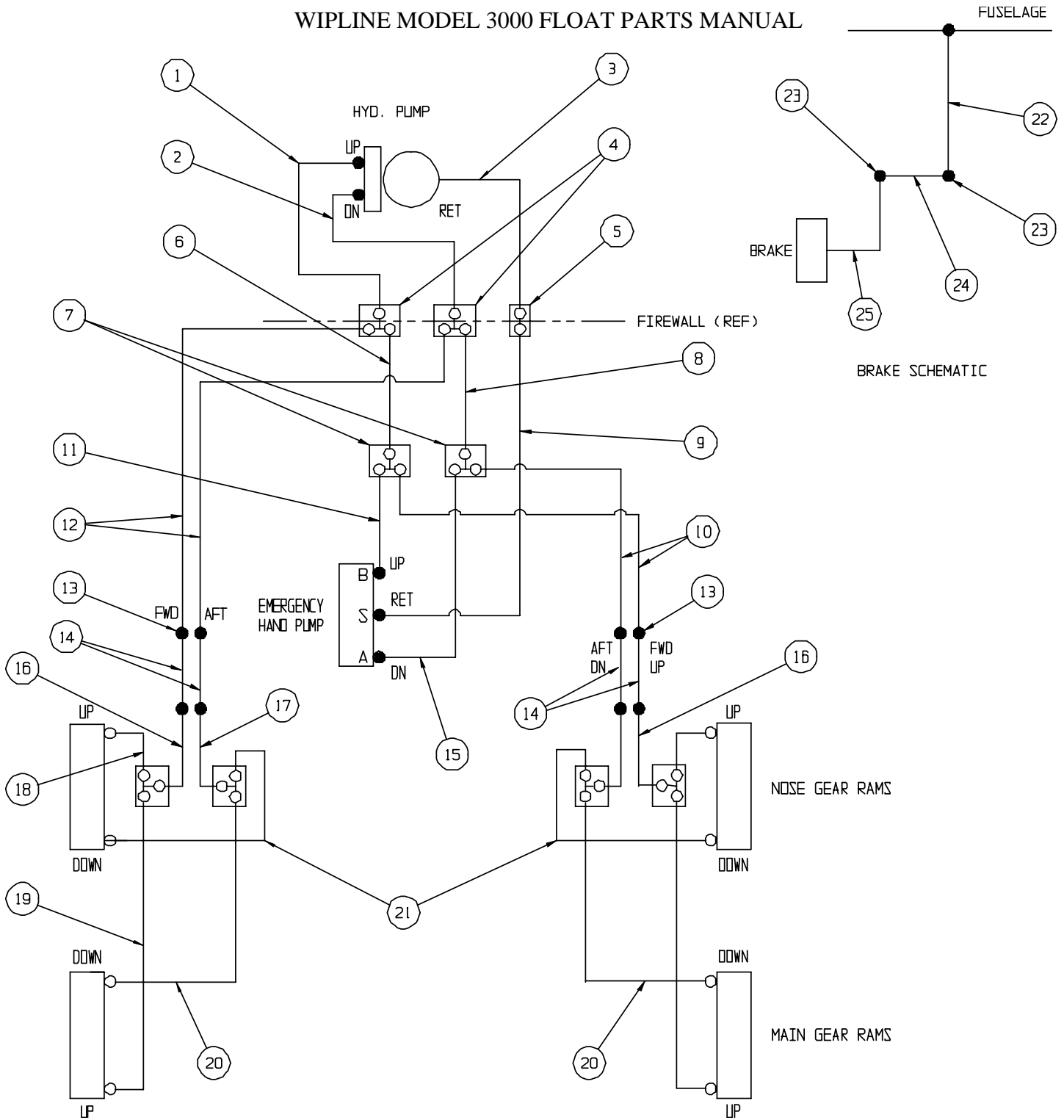
INSTALLATION STEPS  
FIGURE 22

WIPLINE MODEL 3000 FLOAT PARTS MANUAL

INSTALLATION STEPS, FIGURE 22

<u>REF NO.</u>	<u>NO.</u>	<u>REQ.</u>	<u>PART DESCRIPTION</u>	<u>PART NO.</u>
1	1		STEP - L.H.	30A02369-057
	1		STEP - R.H.	30A02369-056
2	2		BOLT - CENTER ATTACH	AN3-20A
	4		WASHER	NAS1149F0363P
	2		NUT	MS21044N3
3	8		SPACER - FRONT & REAR	6A02273-006
4	4		BOLT - FRONT & REAR ATTACH	AN3-24A
	8		WASHER	NAS1149FO363P
	4		NUT	MS21044N3
5	6		HOLE PLUG	1"

WIPLINE MODEL 3000 FLOAT PARTS MANUAL



HYDRAULIC SCHEMATIC – PUMP  
FIGURE 23

WIPLINE MODEL 3000 FLOAT PARTS MANUAL

HYDRAULIC SCHEMATIC – PUMP, FIGURE 23

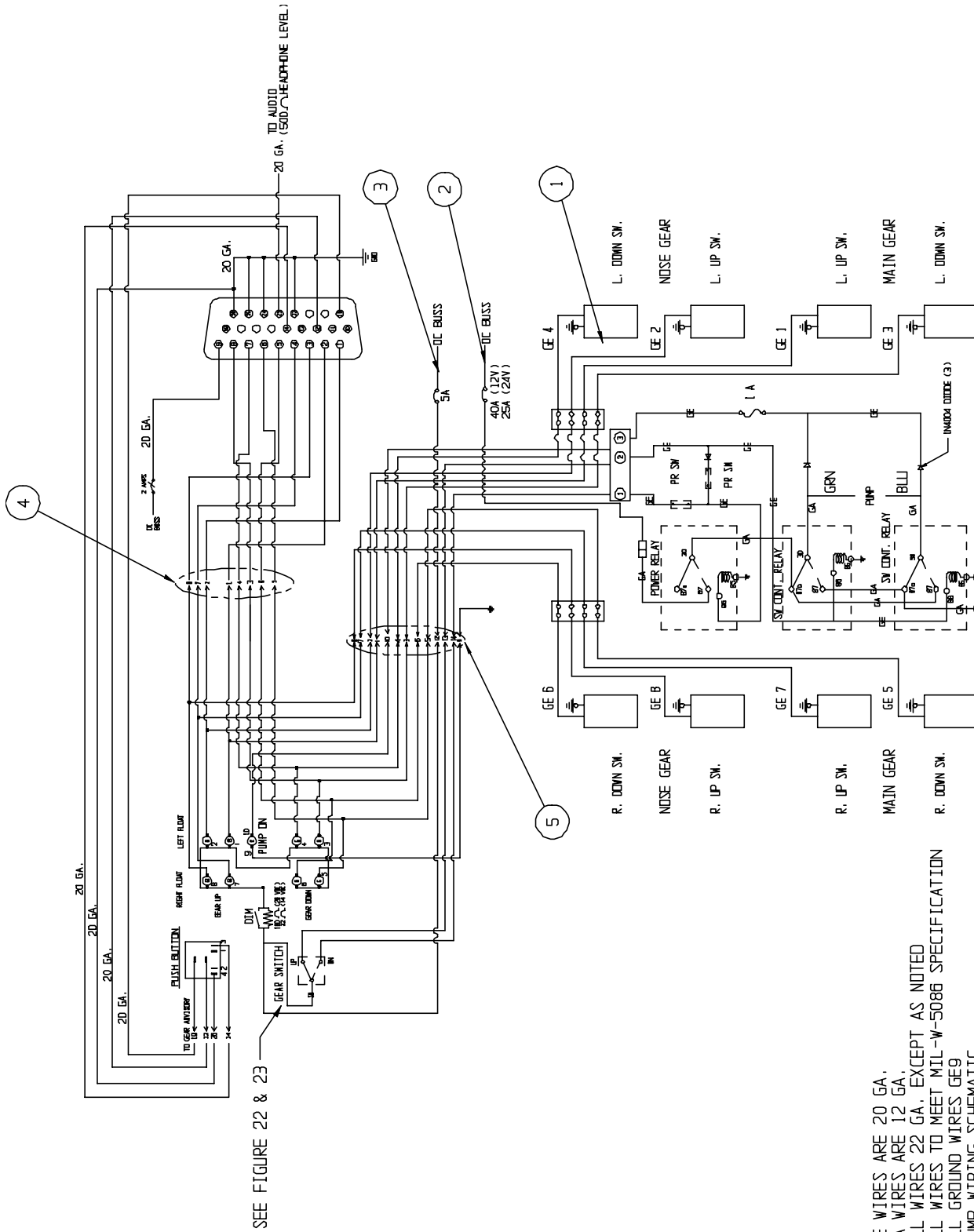
<u>REF NO.</u>	<u>NO.</u>	<u>REQ.</u>	<u>PART DESCRIPTION</u>	<u>PART NO.</u>
1	1		ASS'Y – HYDRAULIC HOSE	34A09000-248
2	1		ASS'Y – HYDRAULIC HOSE	34A09000-247
3	1		ASS'Y – HYDRAULIC HOSE	34A09000-246
4	2		“T” FITTING	AN804-4D
	2		NUT	AN924-4D
	2		WASHER	NAS1149FO763P
5	1		UNION FITTING	AN832-4D
	1		NUT	AN924-4D
	1		WASHER	NAS1149FO763P
6	1		ASS'Y – HYDRAULIC HOSE	34A09000-254
7	2		“T” FITTING	AN824-4D
8	1		ASS'Y – HYDRAULIC HOSE	34A09000-253
9	1		ASS'Y – HYDRAULIC HOSE	34A09000-252
10	2		ASS'Y – HYDRAULIC HOSE	34A09000-249
11	1		ASS'Y – HYDRAULIC HOSE	34A09000-250
12	2		ASS'Y – HYDRAULIC HOSE	34A09000-255
13	4		ELBOW FITTING	AN833-4D
	4		NUT	AN924-4D
	4		WASHER	NAS1149FO763P
14	4		ASS'Y – HYDRAULIC HOSE ( AC S/N below 30154 and/or Fitted with Service Kit 66	21A09000-206

WIPLINE MODEL 3000 FLOAT PARTS MANUAL

HYDRAULIC SCHEMATIC – PUMP, FIGURE 23

<u>REF NO.</u>	<u>NO.</u>	<u>REQ.</u>	<u>PART DESCRIPTION</u>	<u>PART NO.</u>
14	4		ASS'Y – HYDRAULIC HOSE (AC S/N 30155 longer struts)	1002482
15	1		ASS'Y – HYDRAULIC HOSE	34A09000-251
16	2		ASS'Y – HYDRAULIC HOSE	30A09000-272
17	2		ASS'Y - HYDRAULIC HOSE	30A09000-273
18	2		ASS'Y – HYDRAULIC HOSE	30A09000-268
19	2		ASS'Y – HYDRAULIC HOSE	30A09000-270
20	2		ASS'Y – HYDRAULIC HOSE	30A09000-271
21	2		ASS'Y – HYDRAULIC HOSE	30A09000-269
22	2		ASS'Y – HYDRAULIC HOSE	21A09000-080
	2		FITTINGS – END	63-190600-3
23	2		FITTING – ELBOW	AN833-3D
	4		WASHER	NAS1149DO663J
	2		NUT	AN924-3D
24	2		LINE ASS'Y – HARD	21A04000-079
25	2		LINE ASS'Y – FLEX	21A04000-078

# WIPLINE MODEL 3000 FLOAT PARTS MANUAL



SEE FIGURE 22 & 23

## ELECTRICAL SCHEMATIC FIGURE 24

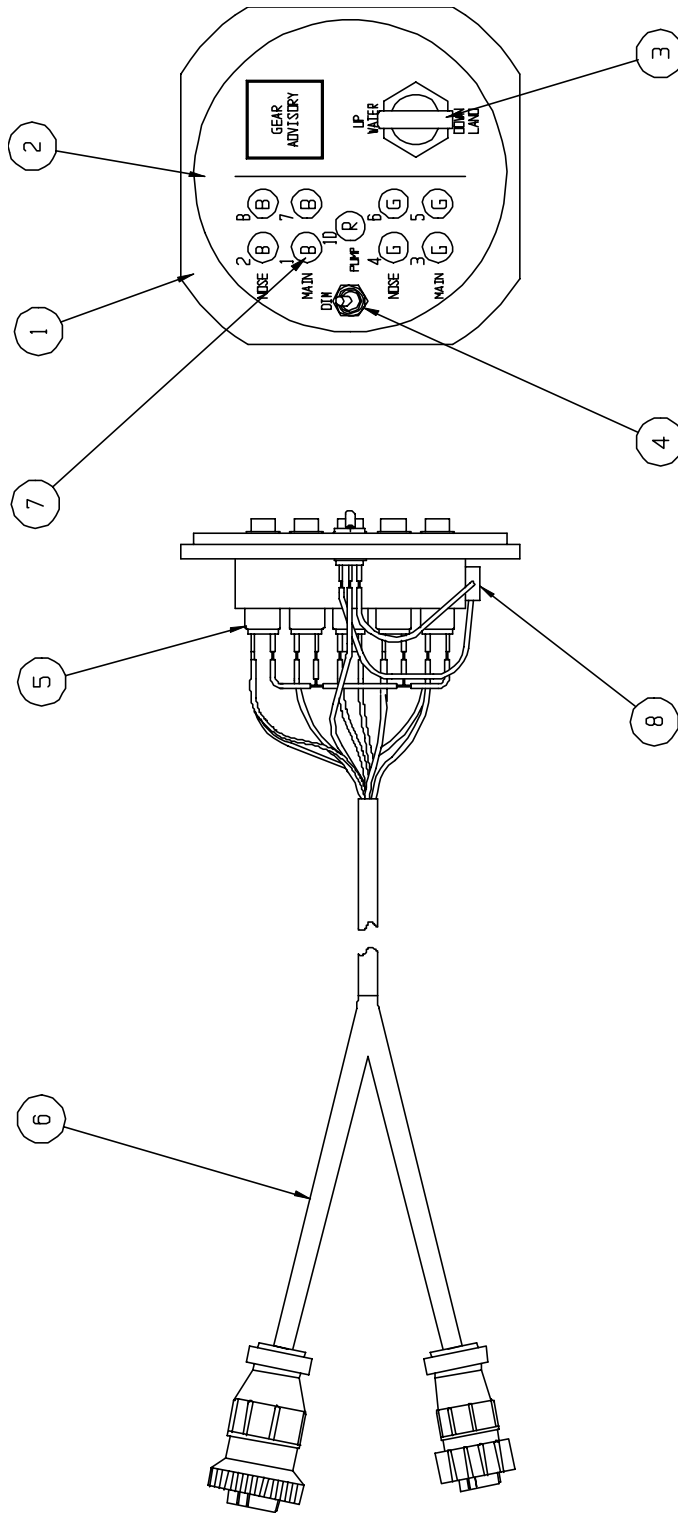
- NOTES:
1. GE WIRES ARE 20 GA.  
GA WIRES ARE 12 GA.  
ALL WIRES 22 GA. EXCEPT AS NOTED  
ALL WIRES TO MEET MIL-W-5086 SPECIFICATION
  2. ALL GROUND WIRES GE9  
PUMP WIRING SCHEMATIC  
(RELAYS SHOWN IN RELAXED CONDITION)
  - 3.

WIPLINE MODEL 3000 FLOAT PARTS MANUAL

ELECTRICAL SCHEMATIC, FIGURE 24

<u>REF NO.</u>			
<u>NO.</u>	<u>REQ.</u>	<u>PART DESCRIPTION</u>	<u>PART NO.</u>
1	8	SWITCH – PROXIMITY - MAGNETIC	5801
	8	CLIP – SWITCH HOLDER	21A09005-262
2	1	CIRCUIT BREAKER (12V)	40 AMP
	1	CIRCUIT BREAKER (24V)	25 AMP
3	1	CIRCUIT BREAKER	5 AMP
4	1	WIRE HARNESS	4A11000-014
5	1	WIRE HARNESS	4A11000-012

WIPLINE MODEL 3000 FLOAT PARTS MANUAL



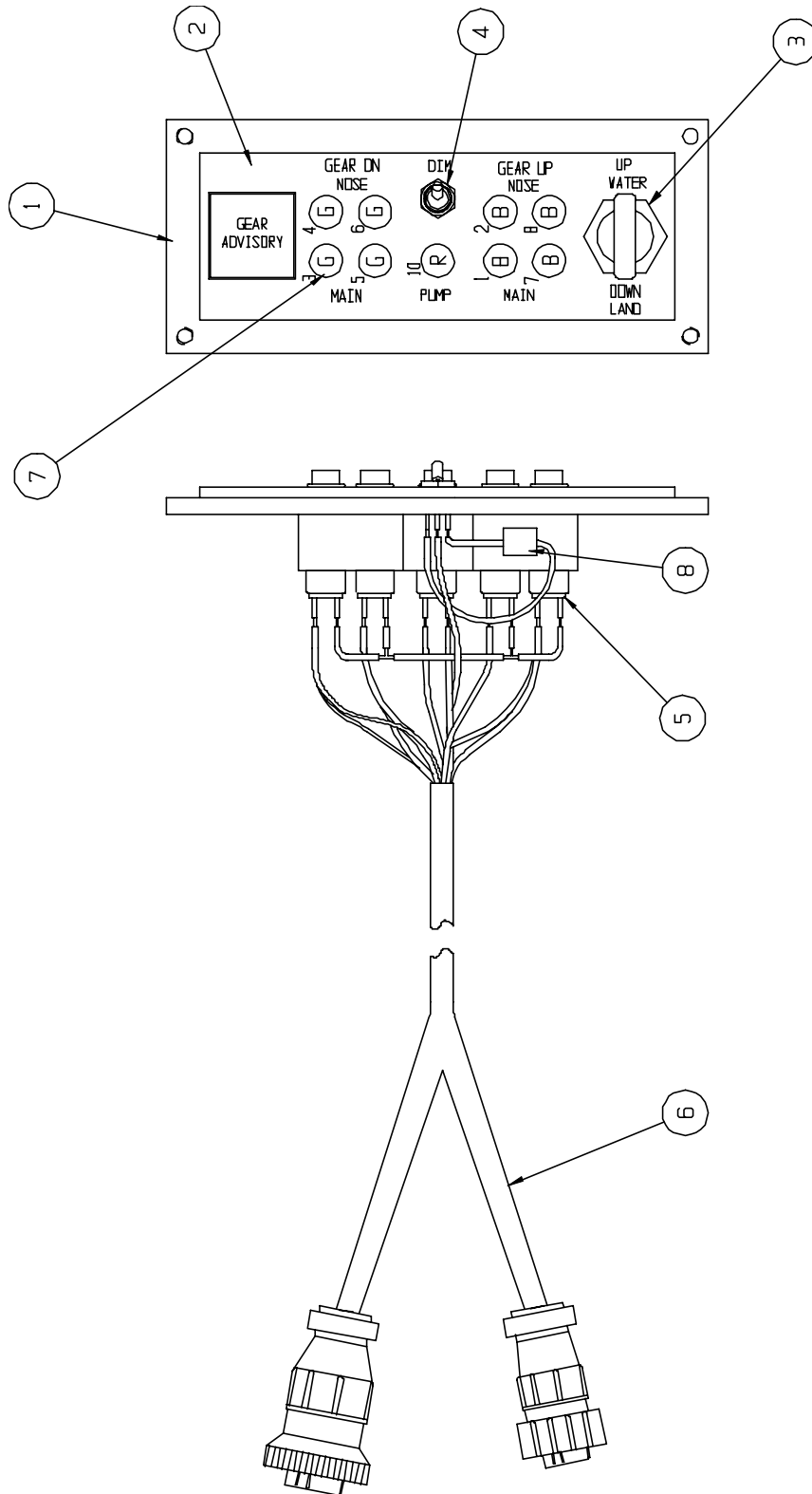
GEAR CONTROL (ROUND)  
FIGURE 25

WIPLINE MODEL 3000 FLOAT PARTS MANUAL

GEAR CONTROL (ROUND), FIGURE 25

<u>REF NO.</u>	<u>NO.</u>	<u>REQ.</u>	<u>PART DESCRIPTION</u>	<u>PART NO.</u>
1	1		BLOCK – INDICATOR (ROUND)	21A11179-001
2	1		PLACARD – FACE	10B3-6202
3	1		SWITCH – ASSEMBLY	8857K44
	1		KNOB – GEAR CONTROL	21A11259-003
4	1		SWITCH – DIMMER	A101SYCB
5	9		SOCKETS	515-0012
	3		SCREW – ATTACH	AN526-632-8
6	1		ASS'Y – WIRE HARNESS	4A11000-008
7	1		LIGHT – RED (12V)	5073914-1431-600
	4		LIGHT – BLUE (12V)	5073914-1434-600
	4		LIGHT – GREEN (12V)	5073914-1432-600
	4		LIGHT – RED (24V)	5073918-1431-600
	4		LIGHT – BLUE (24V)	5073918-1434-600
	4		LIGHT – GREEN (24V)	5073918-1432-600
8	1		RESISTOR (12V)	35 OHM RH-5-35
	1		RESISTOR (24V)	180 OHM RH-5-180

WIPLINE MODEL 3000 FLOAT PARTS MANUAL



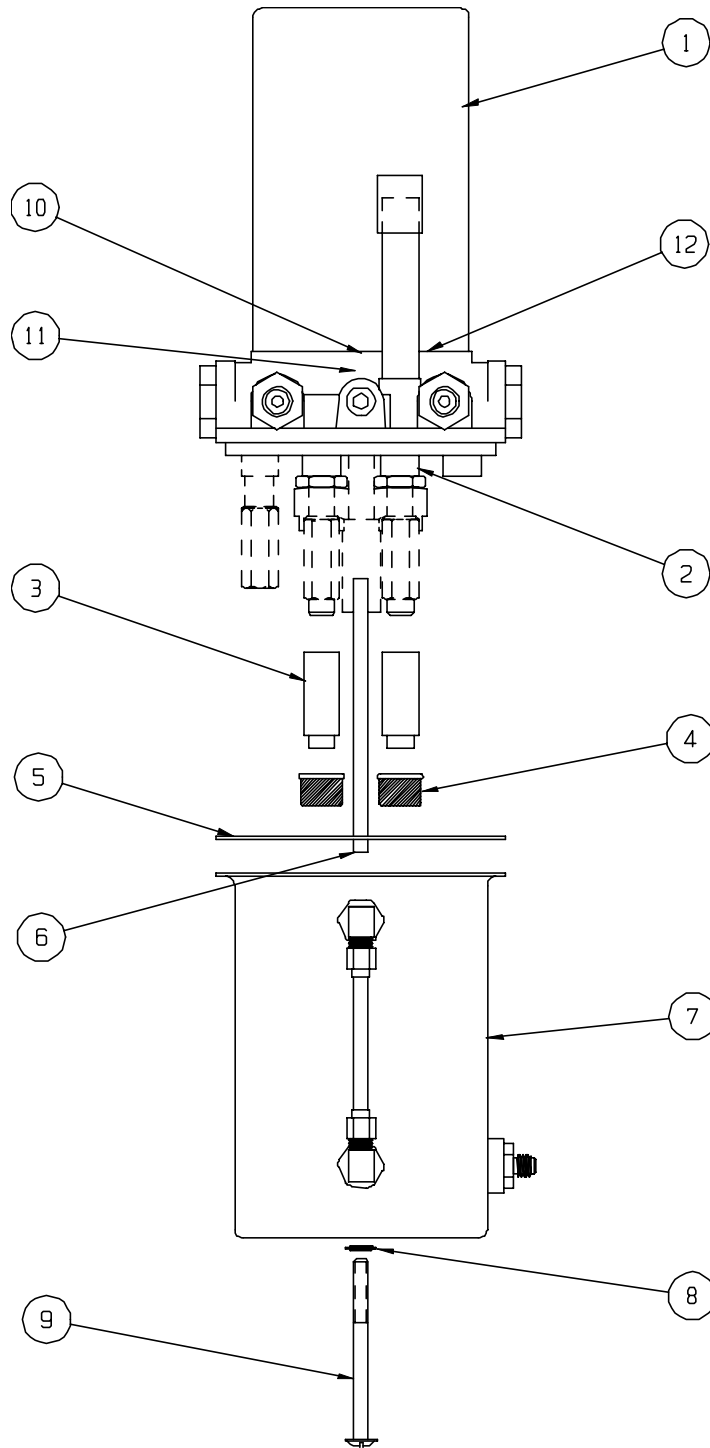
GEAR CONTROL (RECTANGLE)  
FIGURE 26

WIPLINE MODEL 3000 FLOAT PARTS MANUAL

GEAR CONTROL (RECTANGLE), FIGURE 26

<u>REF NO.</u>	<u>NO.</u>	<u>REQ.</u>	<u>PART DESCRIPTION</u>	<u>PART NO.</u>
1	1		BLOCK – INDICATOR (RECTANGLE)	21A11179-002
2	1		PLACARD – FACE	10B3-6277
3	1		SWITCH – ASSEMBLY	8857K44
	1		KNOB – GEAR CONTROL	21A11259-003
4	1		SWITCH – DIMMER	A101SYCB
5	9		SOCKETS	515-0012
	3		SCREW – ATTACH	AN526-632-8
6	1		ASS'Y – WIRE HARNESS	4A11000-008
7	1		LIGHT – RED (12V)	5073914-1431-600
	4		LIGHT – BLUE (12V)	5073914-1434-600
	4		LIGHT – GREEN (12V)	5073914-1432-600
	4		LIGHT – RED (24V)	5073918-1431-600
	4		LIGHT – BLUE (24V)	5073918-1434-600
	4		LIGHT – GREEN (24V)	5073918-1432-600
8	1		RESISTOR (12V)	35 OHM RH-5-35
	1		RESISTOR (24V)	180 OHM RH-5-180

WIPLINE MODEL 3000 FLOAT PARTS MANUAL



HYDRAULIC PUMP  
FIGURE 27

WIPLINE MODEL 3000 FLOAT PARTS MANUAL

HYDRAULIC PUMP, FIGURE 27

<u>REF NO.</u>	<u>NO.</u>	<u>REQ.</u>	<u>PART DESCRIPTION</u>	<u>PART NO.</u>
1	1		HYDRAULIC PUMP ASS'Y (12V)	21A09000-215
			HYDRAULIC PUMP ASS'Y (24V)	21A09000-282
			MOTOR (12V)	410497
			MOTOR (24V)	411165
2	1		BASIC PUMP	634873
3	2		TUBE EXTENSIONS	362136
4	2		FILTER	410521
5	1		SEAL RESERVIOR	410578
6	1		RETURN TUBE	365047
7	1		RESERVIOR – GAUGE ASS'Y	775260
8	1		SEAL THREAD	359071
9	1		SCREW – RESERVIOR ATTACH	409715
10	1		COUPLING – MOTOR TO PUMP	361183
11	1		SEAL – PUMP SHAFT	410512
12	1		“O” RING MOTOR TO BASE	405673

WEIGHT AND BALANCE 3000 AMPHIBIAN			
ITEM	WEIGHT	ARM	MOMENT
FLUID INSTALLATION (NOT INCLUDING SEAL ITEMS)	572.00	41.00	234.52
CANDLE PADLE (2)	4.5	44.00	198
LEFT STEP	5.00	48.00	240
RIGHT STEP	5.00	48.00	240
WEIGHT AND BALANCE 3000 SEAPLANE			
ITEM	WEIGHT	ARM	MOMENT
FLUID INSTALLATION (NOT INCLUDING SEAL ITEMS)	382.00	45.00	171.90
CANDLE PADLE(2)	4.50	44.00	198
LEFT STEP	5.00	48.00	240
RIGHT STEP	5.00	48.00	240
REMOVE FUSELAGE ITEMS			
1. MAIN GEAR (approx)	75.00	18.1	
2. TAIL GEAR (approx)	14.00	280.0	

**WIPLINE 3000 SEAPLANE REMOVAL LIMITATIONS**  
This float may not be removed as a component of the float. It is a separate item and must be removed in the form of an assembly, including the float and the float frame.

**NOTES:**  
Remove the float from the float frame.  
Remove the float from the float frame.  
Remove the float from the float frame.

**WIPLINE 3000 SEAPLANE REMOVAL LIMITATIONS**  
This float may not be removed as a component of the float. It is a separate item and must be removed in the form of an assembly, including the float and the float frame.

**NOTES:**  
Remove the float from the float frame.  
Remove the float from the float frame.  
Remove the float from the float frame.

**WIPLINE 3000 SEAPLANE REMOVAL LIMITATIONS**  
This float may not be removed as a component of the float. It is a separate item and must be removed in the form of an assembly, including the float and the float frame.

**NOTES:**  
Remove the float from the float frame.  
Remove the float from the float frame.  
Remove the float from the float frame.

**WIPLINE 3000 SEAPLANE REMOVAL LIMITATIONS**  
This float may not be removed as a component of the float. It is a separate item and must be removed in the form of an assembly, including the float and the float frame.

**NOTES:**  
Remove the float from the float frame.  
Remove the float from the float frame.  
Remove the float from the float frame.

**WIPLINE 3000 SEAPLANE REMOVAL LIMITATIONS**  
This float may not be removed as a component of the float. It is a separate item and must be removed in the form of an assembly, including the float and the float frame.

**NOTES:**  
Remove the float from the float frame.  
Remove the float from the float frame.  
Remove the float from the float frame.

**WIPLINE 3000 SEAPLANE REMOVAL LIMITATIONS**  
This float may not be removed as a component of the float. It is a separate item and must be removed in the form of an assembly, including the float and the float frame.

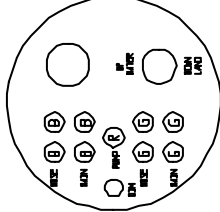
**NOTES:**  
Remove the float from the float frame.  
Remove the float from the float frame.  
Remove the float from the float frame.

**WIPLINE 3000 SEAPLANE REMOVAL LIMITATIONS**  
This float may not be removed as a component of the float. It is a separate item and must be removed in the form of an assembly, including the float and the float frame.

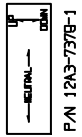
**NOTES:**  
Remove the float from the float frame.  
Remove the float from the float frame.  
Remove the float from the float frame.

**WIPLINE 3000 SEAPLANE REMOVAL LIMITATIONS**  
This float may not be removed as a component of the float. It is a separate item and must be removed in the form of an assembly, including the float and the float frame.

**NOTES:**  
Remove the float from the float frame.  
Remove the float from the float frame.  
Remove the float from the float frame.



P/N 1083-6202 PLACARD ALTERNATE 1083-6277



P/N 1243-7345

**WATER RUDDER UP FOR ALL FLIGHT OPERATIONS**  
P/N 683-2243-2 PLACARD

**ON SEAPLANE AND AMPHIBIAN RETRACT FLAPS TO UP IMMEDIATELY AFTER APPLYING POWER FOR BALCED LANDINGS OR TAKEOFF**  
P/N 1243-7343

**EMERGENCY HANDLINE PULL BEAR MOTOR CIRCUIT BREAKER SELECT DESIRED GEAR POSITION PUMP GEAR TO DESIRED POSITION**  
P/N 1083-6283-1

**ON SEAPLANE AND AMPHIBIAN ADDS FLAPS WITH PUMP DOWN**  
P/N 1243-7345

**REFER TO WIPLINE 3000 SEAPLANE REMOVAL LIMITATIONS FOR REMOVAL PROCEDURES**  
P/N 1043-6279

**WATER RUDDER CONTROL**  
DOWN UP  
P/N 343-1115-1, -2, -3 PLACARDS

**DO NOT LAND ON WATER UNLESS GEAR IS FULLY RETRACTED**  
P/N 683-2243-3 PLACARD

**WIPLINE 3000 SEAPLANE REMOVAL LIMITATIONS**  
MAXIMUM WEIGHT - 2800 LB.  
MAXIMUM WEIGHT - 2800 LB.  
P/N 1243-7382  
180C, 180U, 180E, 180F

**FLIGHT OPERATIONS LIMITATIONS**  
P/N 1243-7387  
185 S/N 18502300, 18503604 AND ON  
180C, S/N 18052490, 18053001 AND ON

PLACARDS AND MISC DATA CESSNA 180/185 FIGURE 28

WIPLINE MODEL 3000 FLOAT PARTS MANUAL

REF NO.  
NO. REQ.

PART DESCRIPTION

PART NO.

FROM FIGURE 17

WIPLINE MODEL 3000 FLOAT PARTS MANUAL

<u>REF NO.</u>	<u>NO.</u>	<u>REQ.</u>	<u>PART DESCRIPTION</u>	<u>PART NO.</u>
SERVICE KIT 66 PARTS LIST FROM FIGURE 17				
27	1		FITTING – UPPER FWD – LH	34A02062-015
	1		FITTING – UPPER FWD – RH	34A02062-014
11	1		ASS'Y – FWD STRUT - LH	1002159
	1		ASS'Y – FWD STRUT – RH	1002132
12	2		ASS'Y – CENTER STRUT	34A02000-205
13	1		ASS'Y – REAR STRUT - LH	1002159
	1		ASS'Y – REAR STRUT - RH	1002137
15	2		ASS'Y – REAR DRAG WIRE	1002153
27	1		FITTING – UPPER FWD – LH	34A02062-015
	1		FITTING – UPPER FWD – RH	34A02062-014
29	1		FITTING – UPPER DRAG WIRE - LH	4A02000-071
	1		FITTING – UPPER DRAG WIRE – RH	4A02000-072
FROM FIGURE 18				
11	3		TURNBUCKLE - BARREL	MS21251B3S
FROM FIGURE 23				
22	2		ASS'Y – HYDRAULIC HOSE	21A09000-080
	2		FITTINGS – END	63-190600-3