 <p style="text-align: center;"> <small>• MANUFACTURERS OF WIPLINE FLOATS & SKIS • SPECIALISTS IN AIRCRAFT MODIFICATION</small> </p> <p style="text-align: center;"> <small>1700 Henry Avenue - Fleming Field South St. Paul, MN 55075 651-451-1205</small> </p>			Rev A
			Date 22-Mar-2007
Prepared by Ryan Nordell	Aircraft Make / Model AT-802	Float / Ski Model Wipline Model 10000 Amphibious	Page 1 4
FAA Reviewed <input checked="" type="checkbox"/>	Title AT-802 Asymmetric Scoop Position Indicator Upgrade		
ALL INFORMATION IN THIS SERVICE DOCUMENT BASED ON FAA APPROVED DATA			

SERVICE KIT: 71

DATE: 22-Mar-07

EFFECTIVITY: AT-802 aircraft with Wipline Model 10000 floats S/N 10003 to 10052

COMPLIANCE: At owner/operators discretion

BACKGROUND INFORMATION: See Service Letter 93

METHOD OF COMPLIANCE: Install the items below:

PARTS REQUIRED:

<u>Item</u>	<u>Quantity</u>	<u>Part Number</u>	<u>Description</u>
10	2	1002152	Ass'y, Harness, Scoop Position
20	2	1002160	Wire Harness, Scoop Position Retrofit

WARRANTY: None

Instructions:

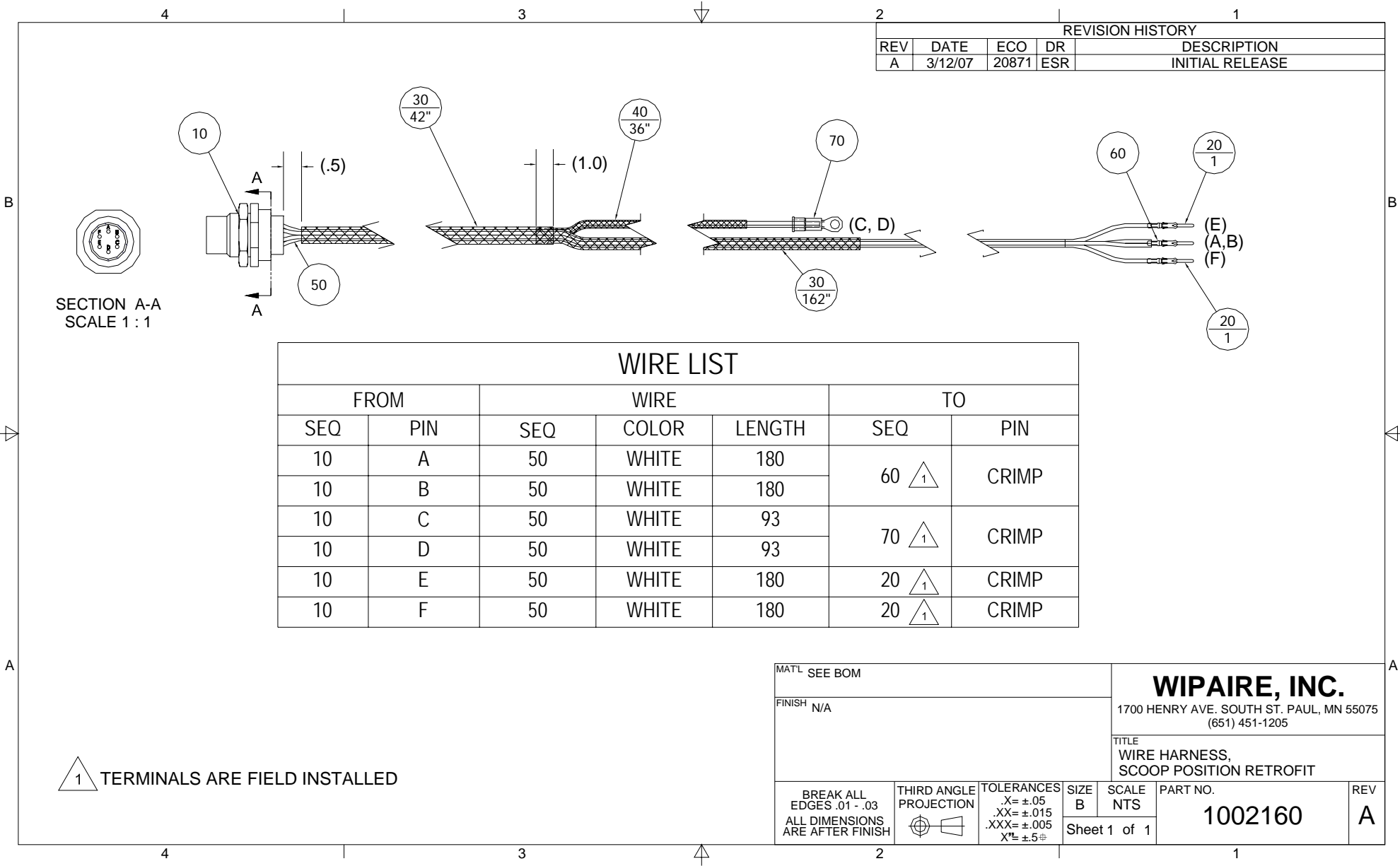
1. Remove foam tank, and bulkhead panels to gain access to the scoop position switches on the scoop probe actuator.
2. Remove scoop position harness assembly (P/N 1001721). You may wish to mark the position of the switches on the actuator before removing to aid in installing the new switches in the correct position. If desired you may choose to remove the scoop and actuator from the float to allow easier maintenance on a workbench.
3. Enlarge 5/8" hole that the 4-pin cannon plug was in to 11/16" for the new 6-pin cannon plug.

4. Install new scoop position harness assembly (P/N 1002152) and re-clamp magnetic switches to the appropriate position on the actuator. Reinstall actuator and probe if it was removed in step 2.
5. Insert and tighten 6-pin cannon plug into the hole enlarged in step 3.
6. Terminate and stow wiring from the 4-pin cannon plug on the end of the float wiring harness (P/N 1001799) attached to the old position harness (P/N 1001721)
7. Route retrofit scoop position harness (P/N 1002160) alongside the float wiring harness (P/N 1001799) through the float, and up the float pylon to inside the airplane fuselage.
8. Attach the 6-pin cannon plug from the retrofit harness to the position switch harness.
9. Route the two 51” ground wires to the ground termination point in the float. Trim wires to required length and terminate with ring terminals to the grounding point.
10. Un-pin pins 7, 8 and 9 on the existing harness at plug P4 (Left hand side), and P5 (Right hand side) inside the fuselage. Terminate and stow the wires these pins were on. Route the retrofit harness to the respective plug (P4 & P5). Trim wires and crimp the terminals on the retrofit harness wires as per print 1002160

<u>SEQ.</u>	<u>Quantity</u>	<u>Part Number</u>	<u>Description</u>
20	2	66103-4	Crimp Pin, 24-20 AWG
60	1	66099-4	Crimp Pin, 18-16 AWG
70	1	36152	Ring Terminal

11. Insert pins into 7, 8 and 9 on plug P4 & P5 per drawing 1002265.
12. Actuate the probes to check proper positioning of the magnetic switches and adjust the position of the switches if needed.
13. Reinstall and seal all covers removed in step 1 and reinstall foam tank.
14. Repeat steps 1-12 for other float.

REVISION HISTORY				
REV	DATE	ECO	DR	DESCRIPTION
A	3/12/07	20871	ESR	INITIAL RELEASE



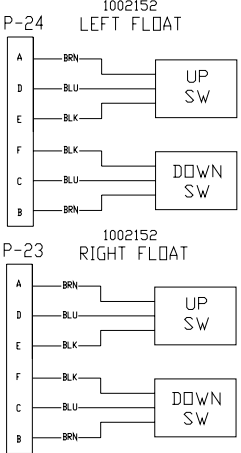
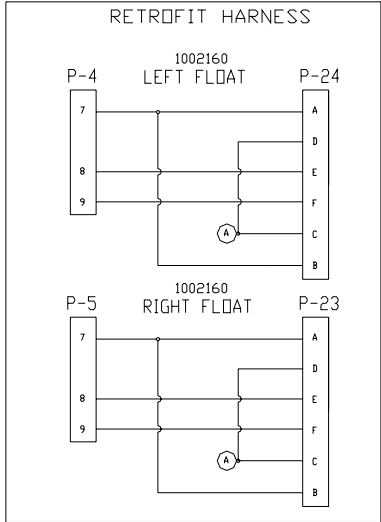
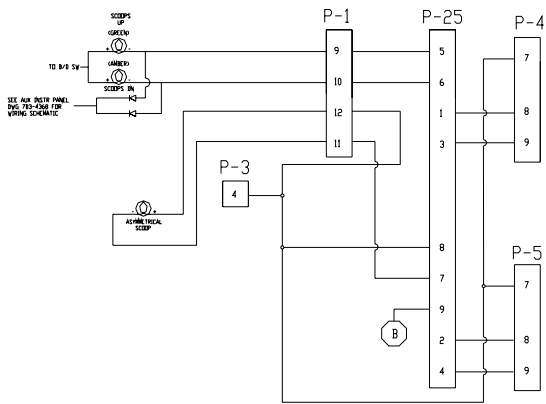
SECTION A-A
SCALE 1:1

WIRE LIST						
FROM		WIRE			TO	
SEQ	PIN	SEQ	COLOR	LENGTH	SEQ	PIN
10	A	50	WHITE	180	60 $\triangle 1$	CRIMP
10	B	50	WHITE	180		
10	C	50	WHITE	93	70 $\triangle 1$	CRIMP
10	D	50	WHITE	93		
10	E	50	WHITE	180	20 $\triangle 1$	CRIMP
10	F	50	WHITE	180	20 $\triangle 1$	CRIMP

$\triangle 1$ TERMINALS ARE FIELD INSTALLED

MATL SEE BOM		WIPAIRE, INC. 1700 HENRY AVE. SOUTH ST. PAUL, MN 55075 (651) 451-1205				
FINISH N/A						
TITLE WIRE HARNESS, SCOOP POSITION RETROFIT						
BREAK ALL EDGES .01 - .03 ALL DIMENSIONS ARE AFTER FINISH	THIRD ANGLE PROJECTION 	TOLERANCES .X= ±.05 .XX= ±.015 .XXX= ±.005 X [#] = ±.5 [#]	SIZE B	SCALE NTS	PART NO. 1002160	REV A
			Sheet 1 of 1			

REVISION HISTORY				
REV	DATE	ECO	DR	DESCRIPTION
A	3/12/07	20871	ESR	INITIAL RELEASE



NOTES:

1. ALL WIRES 22 GA EXCEPT AS NOTED.
2. ALL WIRE TO BE PER MIL-W-22759/16 OR EQUIVALENT.
3. ROUTE & SECURE WIRES TO AVOID CHAFING.

- (A) SINGLE POINT GND IN EACH FLOAT
- (B) SINGLE POINT GROUND - GROUND BUS BAR

MAT'L N/A		WIPAIRE, INC. 1700 HENRY AVE. SOUTH ST. PAUL, MN 55075 (651) 451-1205		
FINISH N/A				
TITLE SCHEMATIC, SCOOP POSITION RETROFIT		PART NO. 1002265		
BREAK ALL EDGES .01 - .03 ALL DIMENSIONS ARE AFTER FINISH	THIRD ANGLE PROJECTION	TOLERANCES .X= ±.05 .XX= ±.015 .XXX= ±.005 X"= ±.5"	SIZE B SCALE NTS Sheet 1 of 1	REV A