

2006 CESSNA 208 CARAVAN

N103CQ SN: 20800396

AIRCRAFT FOR SALE



SPECIFICATIONS

2006 CESSNA 208 CARAVAN

CARAVAN	Year of Manufacture	2006
	Registration	N103CQ
	Serial Number	20800396
AIRFRAME	Total Hours Since New, as of August 2015	660±
ENGINES	Type & Model	Pratt & Whitney PT6 -114A - 675 HP
	Total Hours Since New	660±
	Hot Section Inspection 12/2014 @ 642.2 hrs	18± Hrs SHOT
	CT Blade AD 2014-17-08 RI Complied With	
PROPELLER	Type & Model	McCauley 3GFR34C703
	Total Hours Since New	660±
	Pitch Latches Installed	
WEIGHT	As Configured:	
	Max Take Off Weight 8,360 lbs	
	Useful Load on Amphibs 2,727 lbs ±	
EXTERIOR	Overall White with Blue, Black and Grey striping.	
INTERIOR	Cessna Commuter Seating Tan Leather, 3 Cessna Doubles, 2 Cessna Singles.	
COMMENTS	This 2006 Cessna Caravan Amphibian, with only 660 hours since new, is on Wipline 8000 Amphibious Floats with a Garmin GNS 530/430 Nav/Com/GPS Navigator, KI 825 EHSL, Radar Altimeter, Prop Heat, Air Conditioning, with a fresh annual inspection. This is the perfect aircraft for most any mission!	
PRICE	\$1,650,000	

**Prices are in U.S. Dollars, FOB St. Paul, Minnesota, U.S.A., and are subject to change without notice. Prices do not include taxes, duties or tariffs. The accuracy of the above specifications are only offered as to the best of our knowledge at the time this document was printed. Aircraft is subject to prior sale and/or removal from the market. Aircraft to be sold "as is, where is." All specifications and representations of the aircraft are subject to verification by the buyer before purchase.

AVIONICS

GNS 530 Nav/Com/GPS Navigator
GNS 430 Nav/Com/GPS Navigator
KMD 880 IHAS MFD
RDR 2000 Vertical Profile Color Radar
KFC 225 Flight Control System – Auto Pilot
Altitude Preselect
GTX 327 Digital Transponder
KRA 10 Radar Altimeter
KI 825 EHSI
KR 87 ADF, KI 227 ADF Indicator
GMA 340 Audio Panel – Intercom - 6 Place
GI 106A Garmin GS-CDI
Artex 121.5 ELT
IC M402S Marine Radio

MODIFICATIONS

Wipline 8000 Amphibious
Extended Baggage
Lake & Air Gear Advisory System
8360 LB Gross Weight
Landplane Landing Gear
Propeller Pitch Latches
Propeller Heat
Boiler Plate Firewall Reinforcement
Relish Tray Modification
12v Power Outlet
Depth Gauge
300 Amp Starter Generator
Back up Igniter Box
Oxygen 13 Port 115 CU FT
Air Conditioning
Fueling Steps

CESSNA CARAVAN



Overall White with Blue, Black and Grey striping.





GNS 530/430 Nav/Com/GPS

CESSNA CARAVAN



Cessna Commuter Seating Tan Leather, 3 Cessna Doubles, 2 Cessna Singles.



Cessna Commuter Seating Tan Leather, 3 Cessna Doubles, 2 Cessna Singles.

CESSNA 208 CARAVAN

PRODUCTS & MODIFICATION GUIDE



Wipline 8000 Floats

For over 25 years, the Cessna Caravan has been and continues to be recognized as the sport utility vehicle of the air. Combine this workhorse of an aircraft with a set of rugged Wipline 8000 Floats and our performance enhancing modifications and you have an aircraft that will fly you from your business meeting to your weekend getaway destination.

The Wipline 8000 float features sister keels, or speed rails, with a fluted bottom skin assuring excellent performance in a wide range of water conditions. Our amphibious floats have the **best nose gear and main gear designs** on the market, proven through rigorous engineering testing and years of service. Our **flat top deck** area promotes crew and passenger safety. Our amphibious floats also come with the added safety of a **Lake & Air Gear Advisory System**. Experience the amphibious versatility of being able store your prize aircraft in the hangar, taxi up to the fuel pump, and fly off to your remote water destination.

Obtain your floats and modifications from the only float company with over 50 continuous years of production and be assured we'll be there when you need support, 24 hour a day and seven days a week.

Cessna Caravan Modifications

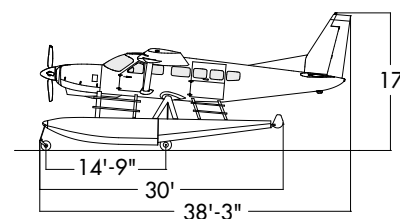
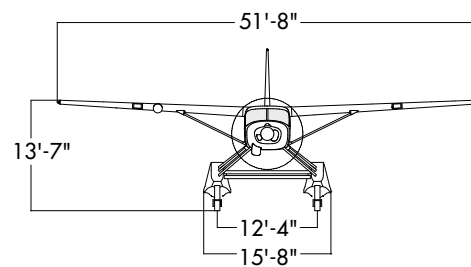
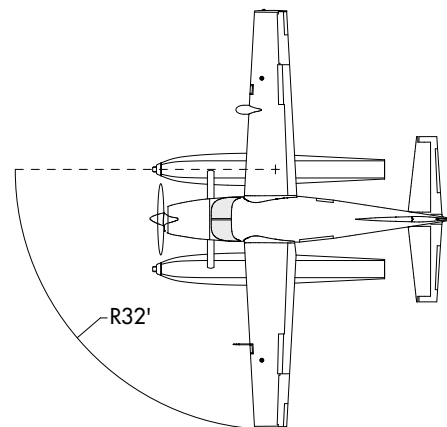
- 8360 lb Gross Weight Increase (Compatible with amphibian /seaplane & landplane)
- Increase to 675 HP
- Single Point Fuel Systems (Exclusively by Wipaire)
- AeroTwin Extended Baggage Kits
- Cargo Pod Installations
- Float Kit Modifications
- Seaplane Firewall Modifications
- Factory Air Conditioning Installation
- Factory De-Ice Systems Installation
- Western Propeller Pitch Latch Kits
- Hartzell & McCauley Aluminum Propellers



Outfit your Caravan with **Wipaire's Single Point Fueling system** and save time. Adding Single Point fueling capability makes your fuel stops at airports simpler, safer and faster. This modification enables your Caravan to be fueled by standard fueling trucks at ground level removing the requirement for tall ladders and filling tanks individually. Reduce your fueling time so you can get on to your destination faster! This is a great feature for your caravan whether you are on floats or wheels!

CESSNA CARAVAN ON WIPLINE 8000 FLOATS

WEIGHT	Amphibian System Total Weight	656 kg / 1,446 lbs
	Amphibian Exchange Weight*	439 kg / 967 lbs
	Seaplane System Total Weight	552 kg / 1,216 lbs
	Seaplane Exchange Weight*	334 kg / 737 lbs
	Gross Weight**	3,792 kg / 8,360 lbs
FLOAT DIMENSIONS	Length – Seaplane	9.02 m / 29'7"
	Length – Amphibian	9.14 m / 30'0"
	Height – hull	0.99 m / 3'3"
	Width – hull	1.02 m / 3'4"
	Float Locker capacity (each)	22.7 kg / 50 lbs
DISPLACEMENT ON FRESH WATER	Amphibious (100%)	3,593 kg / 7,922 lbs
	Amphibious (80%)* **	3,993 kg / 8,802 lbs
	Seaplane (100%)	3,678 kg / 8,108 lbs
	Seaplane (80%)* **	4,086 kg / 9,009 lbs
PERFORMANCE	Engine	PT6A-114A (675 HP)
	Take off run (land)	336 m / 1,101 ft
	Take off over 50 ft obstacle (land)	641 m / 2,102 ft
	Take off run (water)	585 m / 1,919 ft
	Take off over 50 ft obstacle (water)	918 m / 3,015 ft
	Rate of climb	338 m/min / 1,110 ft/min



* Exchange Weight is equal to the float installation weight minus aircraft landing gear weight.
 ** With 8360 Gross Weight Increase installed.
 *** Maximum aircraft gross weight with 80% reserve buoyancy (2 floats) as per FAR 23.751.

Wipaire Services



Maintenance

- Float Inspections & Repairs
- Landing Gear Inspection & Repair
- Cessna Corrosion Inspection
- Structural Repairs
- And Much More!



Paint & Interiors

- We Specialize In Custom Requests
- Meticulous Attention To Detail
- Committed To Quality
- World-Class Custom Design Service
- Expert Paint Technicians



Avionics

- Specialize In Garmin 500 & 400 Series GPS "WAAS" Upgrades
- Custom Cabin Entertainment Systems
- Perform IFR Certification
- Service For Existing Avionics.

CESSNA CARAVAN

PERFORMANCE • RANGE • PAYLOAD

PERFORMANCE

Cruise Speed (10,000 ft) ktas/km	162	300
Range (10,000 ft) nm/km	790	1,463
<small>Includes takeoff, climb, cruise, descent, and 45-min. reserve at max cruise power.</small>		
S.L. Rate of Climb fpm/mpm	1,110	338
Certified Ceiling ft/m	20,000	6,096
Takeoff S.L. ISA		
Ground Roll ft/m	1,920	585
50-ft Obs. ft/m	3,015	919
Stall Speed (Ldg) ktas/km	59	109
Landing S.L. ISA		
Ground Roll ft/m	1,045	319
50-ft Obs. ft/m	1,935	590
Maximum Weights lb/kg		
Ramp	8,035	3,645
Takeoff	8,000	3,629
Landing	7,800	3,538
Standard Empty Weight lb/kg	5,215	2,366
Maximum Useful Load lb/kg	2,820	1,279
Wing Loading lb/sq ft	28.6	
Power Loading lb/hp	11.9	

DIMENSIONS

Interior		
Cabin (Aft of Pilot Area)		
Length ft/m	12.7	3.7
Height ft/m	4.3	1.3
Width ft/m	5.2	1.6
Volume cu ft/cu m	254	7.2
Exterior		
Overall Dimensions		
Length ft/m	38.9	11.9
Span ft/m	52.1	15.9
Height ft/m	16.3	5.0
Float Baggage		
Weight Limit lb/kg	400	181
Volume cu ft/cu m	23	0.7

SPECIFICATIONS

Engine	PT6A-114A	
SHp	675	
Fuel Capacity gal/lb	335	2,248
Max Seating FAR 23/Other	10	
Propeller – 3-bladed, Constant Speed, Full Feathering, Reversible		

FOR MORE INFORMATION CONTACT

Aircraft Sales & Acquisitions

Dale Fehrenbach
Turbine Aircraft Sales Manager
Direct: 651.306.0360
dfehrenbach@wipaire.com

Diane Wille
Coordinator
Direct: 651.209.7190
dwille@wipaire.com



1.888.WIPAIRE | www.wipaire.com | 1700 Henry Avenue - Fleming Field, South St. Paul, MN 55075