



• MANUFACTURERS OF WIPLINE FLOATS & SKIS
• SPECIALISTS IN AIRCRAFT MODIFICATION

1700 Henry Avenue - Fleming Field
South St. Paul, MN 55075
651-451-1205

Rev / Latest
Rev. Date
B / 7-15-10

Original
Release
10-10-2000

Prepared by
Ellen Parker

Aircraft Make / Model
DeHavilland Twin Otter

Float / Ski Model
13000 Amphibious or Seaplane

Page
1
3

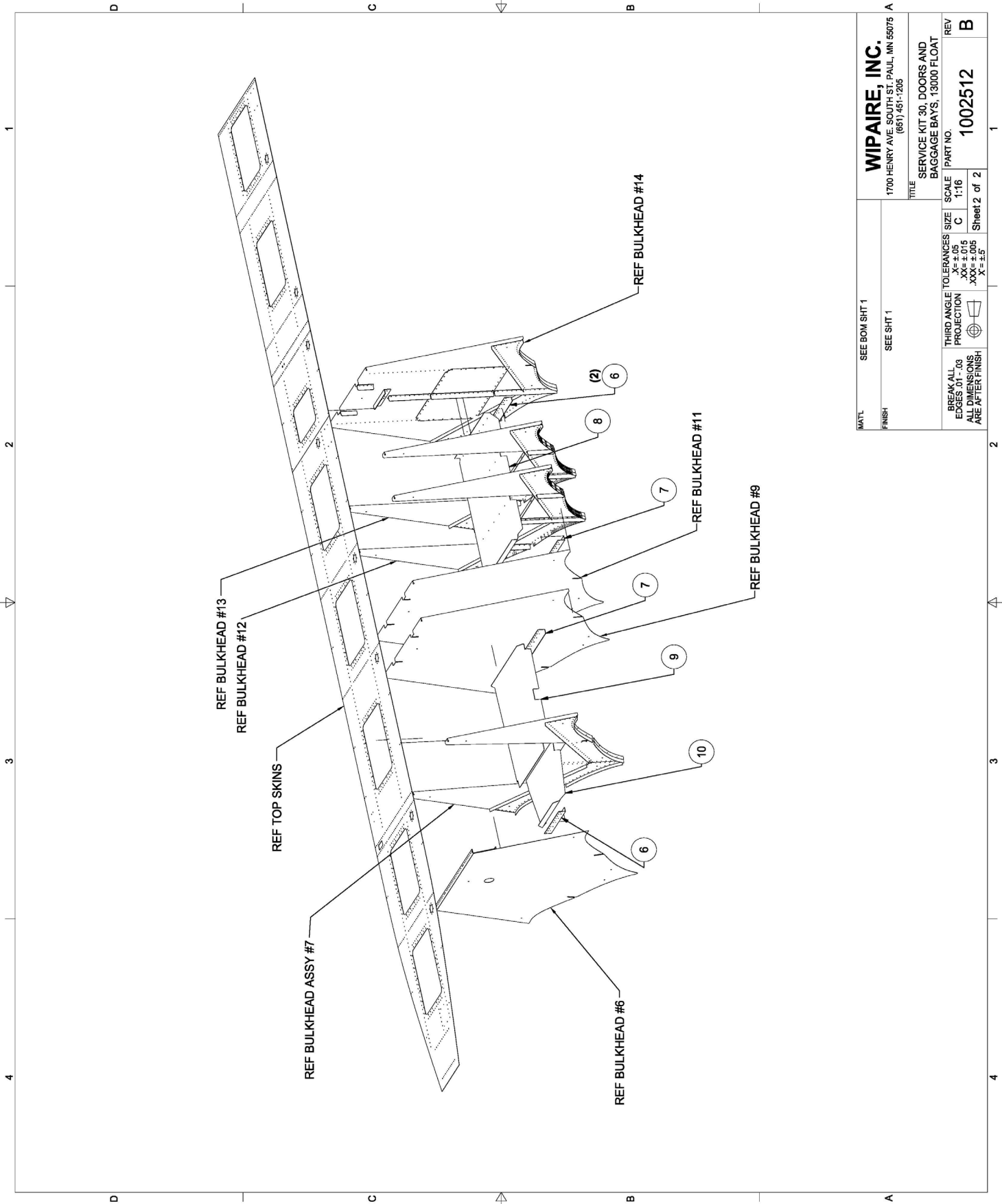
FAA Reviewed
☒

Title
Install Hinged Access Doors & Baggage Bay Floors

ALL INFORMATION IN THIS SERVICE DOCUMENT BASED ON FAA APPROVED DATA

SERVICE KIT: 30

EFFECTIVITY	All 13000 amphibious or seaplane floats.			
COMPLIANCE	This service kit is an optional upgrade.			
BACKGROUND	Not applicable			
COMPLIANCE METHOD	Replacement of original fixed access covers located on the float top-deck with hinged access doors and baggage-bay floors. Ordering p/n 1002512 will include the following parts:			
	Item	Part Number	Description	Quantity
	1	10A01000-464	Assembly, Door, Baggage Bay	4
	2	13A01162-052	Baggage Lip	4
	3	13A01382-006	Angle/ top skin cross-tie	8
	4	1085H3-1MDC	Seal, baggage door	28
	5	1002063	Baggage lip	4
	6	1003672	Angle	6
	7	1003673	Angle	4
	8	1003675	Panel	2
	9	1003676	Panel	2
	10	1003677	Panel	2
	11	7A3-4205-1	Placard	2
	12	7A3-4205-2	Placard	2
	13	1004518	Template	1
	14	1004519	Template	1
SHOP HOURS	10 hours per float			
WARRANTY	Not applicable			
NOTES	Not applicable			



MATL	SEE BOM SHT 1	WIPPAIRE, INC.	
FINISH	SEE SHT 1	1700 HENRY AVE. SOUTH ST. PAUL, MN 55075	
		(651) 451-1205	
		TITLE	
		SERVICE KIT 30, DOORS AND BAGGAGE BAYS, 13000 FLOAT	
BREAK ALL EDGES .01 - .03 ALL DIMENSIONS ARE AFTER FINISH	THIRD ANGLE PROJECTION	SIZE C	SCALE 1:16
TOLERANCES .XX = ± .015 .XXX = ± .005 X = ± .5			
		PART NO.	REV
		1002512	B
		Sheet 2 of 2	