 <p style="text-align: center;"> • MANUFACTURERS OF WIPLINE FLOATS & SKIS • SPECIALISTS IN AIRCRAFT MODIFICATION </p> <p style="text-align: center; font-size: small;"> 1700 Henry Avenue - Fleming Field South St. Paul, MN 55075 651-451-1205 </p>			Rev
			Date 6/1/07
Prepared by Ellen Parker	Aircraft Make / Model Cessna 208 Caravan	Float / Ski Model 8000 Amphibious floats S/N 80323 & 80324.	Page 1 7
FAA Reviewed <input checked="" type="checkbox"/>	Title Slide Tube End Machining Repair		
ALL INFORMATION IN THIS SERVICE DOCUMENT BASED ON FAA APPROVED DATA			

SERVICE LETTER: 95

EFFECTIVITY: A single set of Floats were released to a customer and installed before an error was discovered. S/N 80323 & 80324.

COMPLIANCE: Compliance with this temporary repair should be made as soon as possible.

BACKGROUND INFORMATION: A small number of Part # 6A01201-001 (Figure 11, item 42 in Parts manual) were out of tolerance. All parts that were out of tolerance were located and replaced appropriately before customer delivery of floats with the exception of one set. S/N 80323 & 80324.

This error leaves a small gap between the slide tube and the ears of the machining the slide tube is bolted to (see red arrows). Due to the fact that the aircraft is in operation, this temporary repair will allow continued operation until final repairs can be made.

METHOD OF COMPLIANCE: Inspection & Repair

Remove cover just forward of aft struts

Remove Tunnel cover (see Picture 2)

Look for gap between slide tube & 6A01201-001 ears (see arrows on Picture 1, picture shows assembly as it should be with no gap).

If gap exists:

Jack or lift aircraft per Service Manual methods.

Remove AN-6-47A bolt (Figure 11, item 41 in parts manual) use NAS1149F0663P & NAS1149F0632P washers as spacers to ensure slide tube is centered and remains centered.

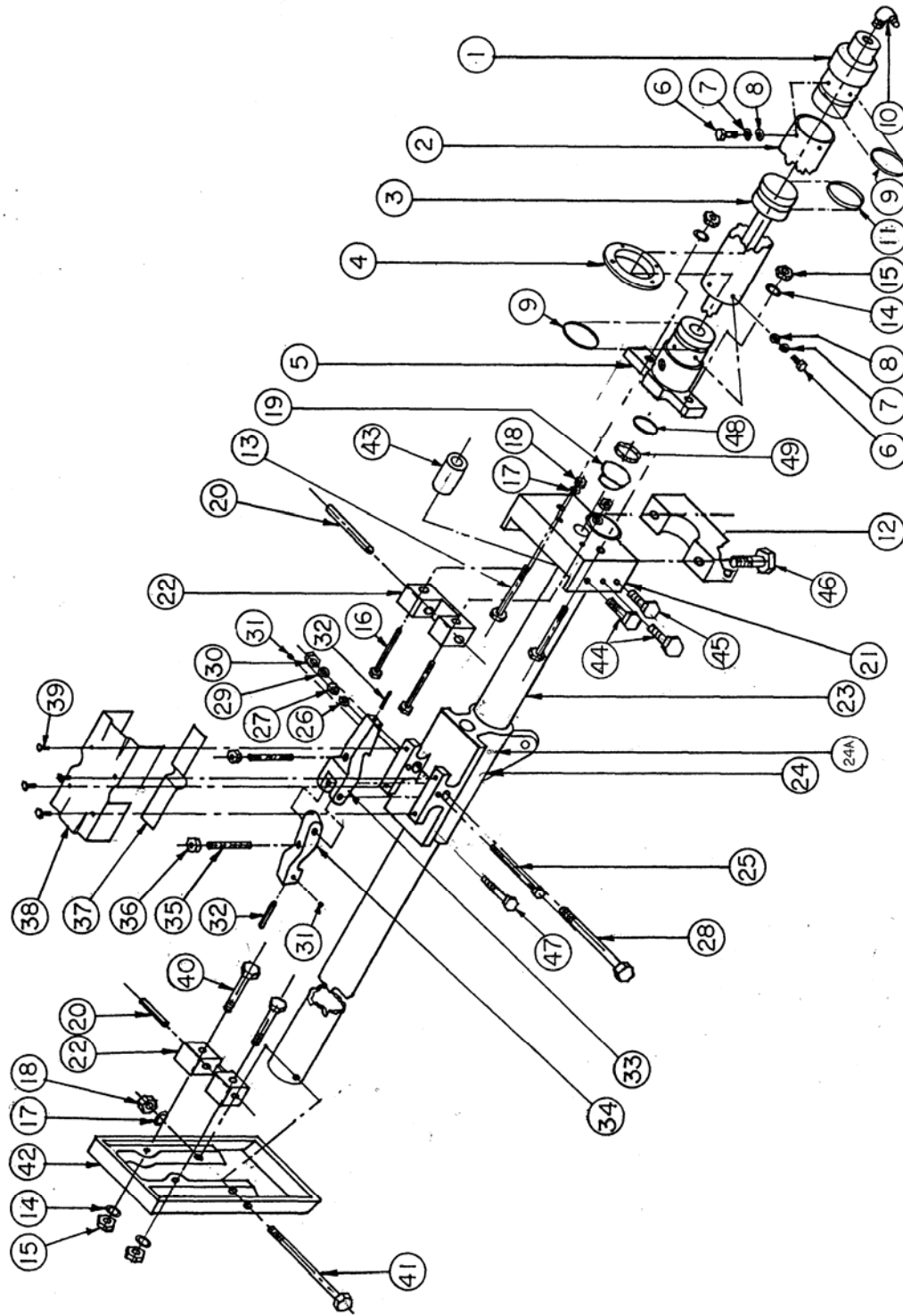
Re-assemble

Perform gear swing test per service manual to ensure proper gear functionality.

Perform all work to AC 43.13 Standards unless directed otherwise by this service letter.

SHOP HOURS REQUIRED: Estimated 4 hours for completing both sides.

WARRANTY: Parts & labor for completing this service letter and the final repair.



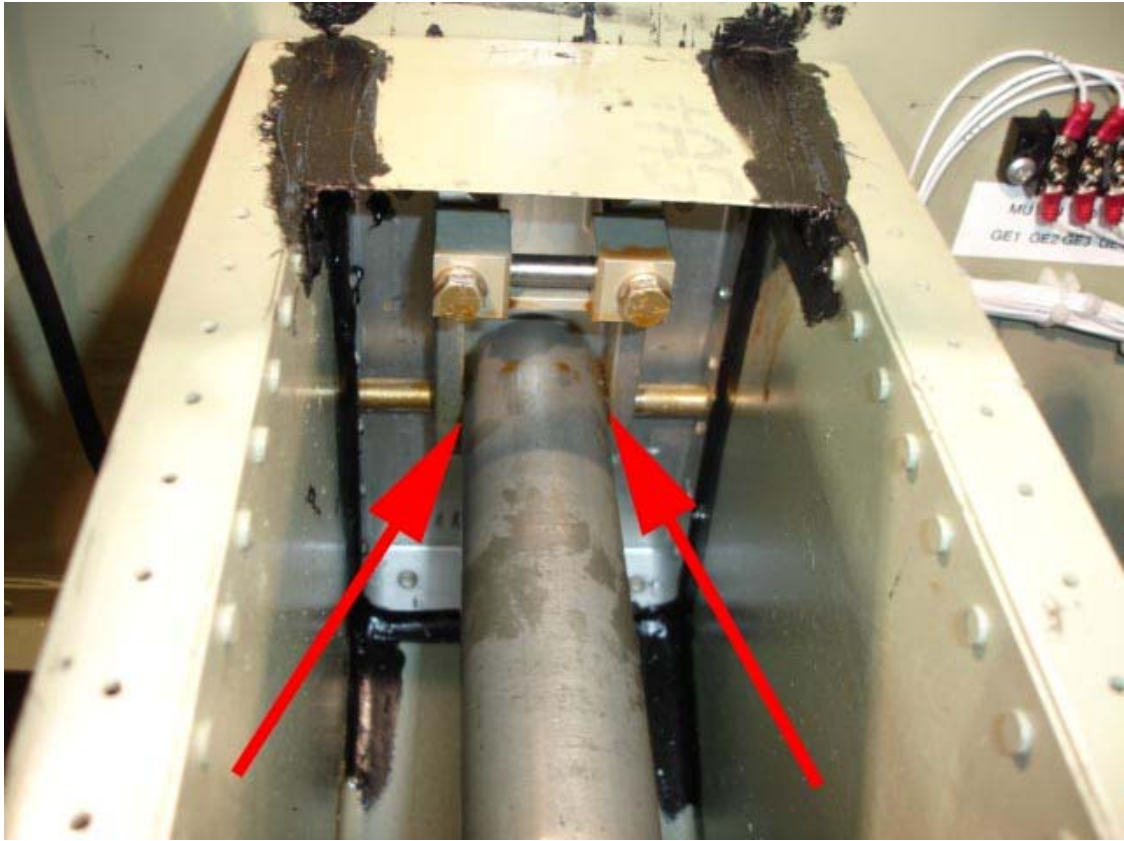
MAIN GEAR SLIDE TUBE ASSEMBLY
FIGURE 11

1	1	END CAP-CYLINDER	6A05268-001
2	1	CYLINDER-OUTSIDE	8A05116-003
3	1	RAM ASSEMBLY	8A05000-010
4	1	RING-CYLINDER-SUPPORT	6A05181-001
	1	"O" RING	MS28775-327
5	1	FLANGE-CYLINDER END	6A05199-001
6	8	BOLT	NAS6203-2
7	8	WASHER-LOCK	MS35333-39
8	8	WASHER	NAS1149D0363J
9	2	"O"RING	MS28775-220
10	1	ELBOW	MS20822-4D
11	1	"O"RING	MS28775-219
12	1	CAP-SLIDE TUBE	8A05195-001
	2	BOLT (SIDE)	AN6-12A
13	2	BOLT	AN6-12A
14	A/R	WASHER	NAS1149D0663J
15	4	NUT	MS21044N6
16	2	BOLT	AN4-24A
17	A/R	WASHER	NAS1149D0463J
18	2	NUT	MS21044N4
19	1	WIPER (NYLON)	8880410
20	2	LOCK PIN	6A05702-008

21	1	FITTING-SLIDE TUBE	6A05208-001
22	2	LOCK FITTING	6A05193-001
23	1	SLIDE TUBE	8A05402-004
	1	END-SLIDE TUBE INSERT	6A05259-002
24	1	CARRIAGE	6A05309-001
	2	BEARING (LARGE)	26DU-16
	2	BEARING (SMALL)	08DU-08
24a	1	ZERK	1095K41
25	1	BOLT	AN3-25A
26	A/R	WASHER	NAS1149D0363J
27	1	NUT	MS21044N3
28	1	BOLT	AN6-26A
29	A/R	WASHER	NAS1149D0663J
30	1	NUT	MS21044N6
31	2	SET SCREW (MAGNET)	1032 X 3/16
32	2	MAGNET	3A05701-001
33	1	LOCK-AFT	6A05042-001
34	1	LOCK-FORWARD	6A05041-001
35	2	SET SCREW-LOCK	6A05087-001
36	2	JAM NUT	AN316-4
37	1	SPRING-LOCK	6A05533-001
38	1	COVER-CARRIAGE	6A05158-019
39	4	SCREW	AN526-832-8
	4	WASHER	MS35333-38
	4	WASHER	NAS1149DN832J

40	2	BOLT	AN4-24A
41	1	BOLT	AN6-47A
42	1	END CAP-TUNNEL	6A01201-001
43	1	END-SLIDE TUBE-INSERT	6A05259-002
44	4	BOLT	AN5-6A
	8	WASHER	NAS1149D0563J
	4	NUT	MS21044N5
45	4	BOLT	AN6-7A
	8	WASHER	NAS1149D0663J
	4	NUT	MS21044N6
46	2	BOLT	AN5H20A
	2	WASHER	NAS1149D0563J
47	1	BOLT	AN4-14A
	A/R	WASHER	NAS1149F0463P
	1	NUT	MS21044N4
48	1	"O" RING	MS28775-314
49	1	WIPER FELT	6A05580-004
	1	OILER	1214K1

Picture 1



Picture 2

