



SERVICE LETTER NUMBER 123			
TITLE: QUEST KODIAK MODIFIED AXLE BEAM BUSHING			
BY: J. Sortor	AIRCRAFT MAKE/MODEL(S):	FLOAT MODEL(S):	NOTE(S):
APP: DG, KT	Quest Aircraft Design, LLC Kodiak 100	7000	OPTIONAL COMPLINACE S/L P/N 1005302 ECO 22499
DATE: 8/30/2011			
REV: A			

FAA APPROVAL HAS BEEN OBTAINED FOR TECHNICAL DATA IN THIS PUBLICATION THAT AFFECTS STC OR TSO DESIGN COMPLIANCE

EFFECTIVITY:

This service letter applies to all S/Ns Wipline model 7000 amphibian floats, as installed on Quest Aircraft Design, LLC Kodiak 100 aircraft per FAA STC number SA02848CH.

COMPLIANCE:

It is recommended to comply with this service letter for float serial numbers 70030 and below.

BACKGROUND:

Wipaire has received reports that the some axle beam bushing grease zerks, when serviced with grease, have pulled the threads off of the brass plug in the main landing gear attachment bushing. This modification alleviates that condition and prevents damage to the threads.

COMPLIANCE METHOD:

Modify the MLG axle beam bushing grease zerks in accordance with P/N 1005302 Rev A or latest revision.

APPROX. SHOP HOURS:

This service letter will require approximately 4 labor hours for completion.

WARRANTY INFORMATION:

Parts and labor warranty are not included for this modification.

TECTECHHNICAL DATA

Copies of this service letter, associated service kit, float service manual, modification drawing, and float parts manual are available on the website www.wipaire.com.

There is no service kit associated with this modification.

For basic model 7000 maintenance information, see Wipaire Service Manual P/N 1004646.

For basic model 7000 parts information, see Wipaire Parts Manual P/N 1005250.

To accomplish the modifications to the MLG axle beam, perform the functions shown on drawing 1005302 on page 3 and 4 of this letter.

NOTES:

After completion of the instructions in this service letter, make an entry as such in the aircraft logbook in accordance with your local Civil Aviation regulations. The weight and balance change is zero for this modification.

REVISION HISTORY			
REV	DATE	ECO	DR
A	8/30/2011	22499	JRS
			DESCRIPTION
			INITIAL RELEASE

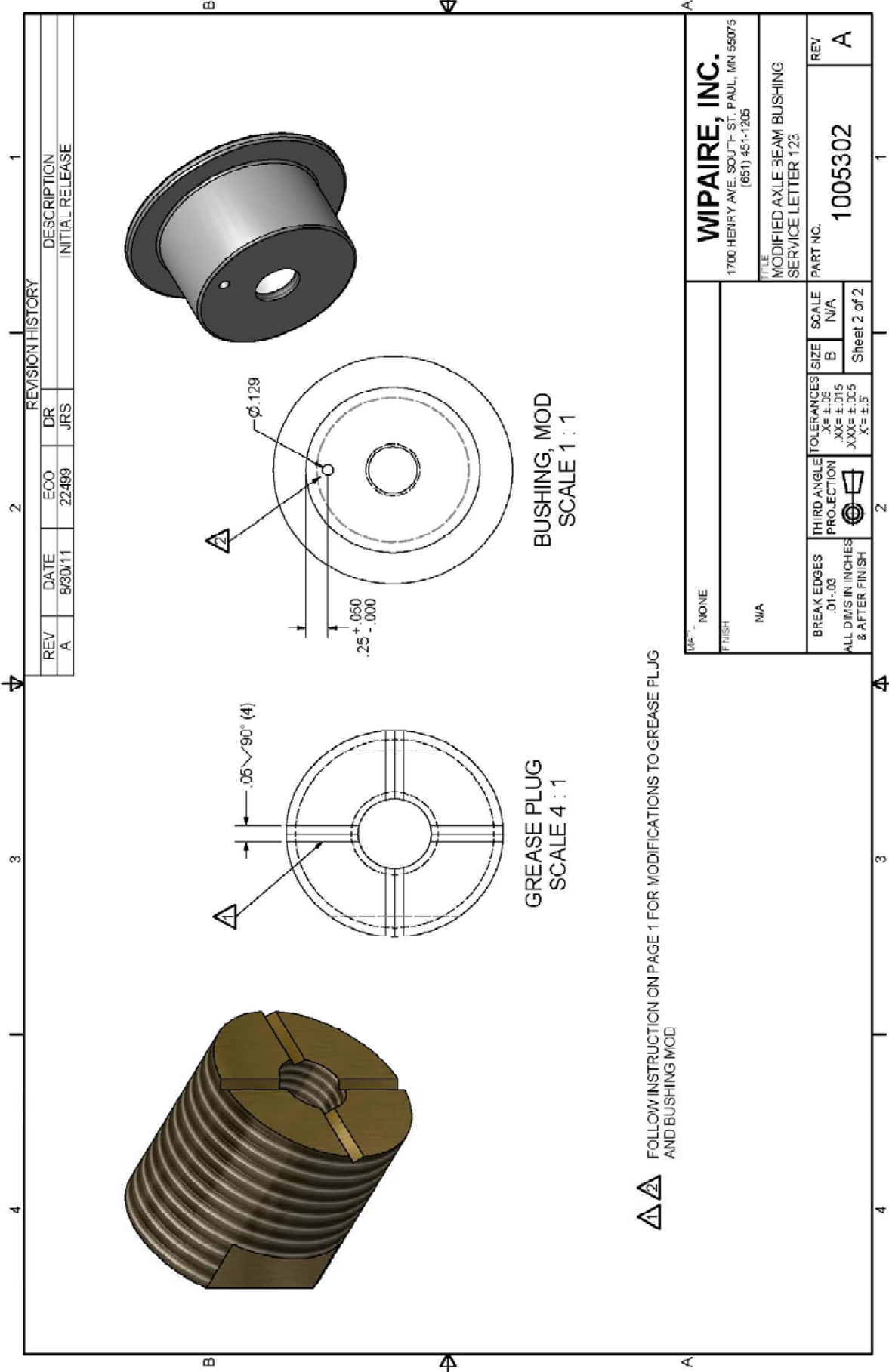


NOTES:

1. CONFIGURE AIRCRAFT POSITION SAFE FOR MAINTENANCE.
2. RELIEVE AIRCRAFT WEIGHT FROM FLOAT STRUTS.
3. REMOVE LH AND RH STRUT FAIRING ASSEMBLIES.
4. REMOVE JAM NUT AND BRASS BUSHING WITH GREASE ZERK FROM PILOT SIDE FWD AND AFT BUSHING CAPS.
5. MODIFY BRASS PLUG BY USING A CUT-OFF WHEEL, CUTTING .060 WIDTH X .060 DEPTH CROSS HAIRS THRU END OF PLUG TO CHANNEL INTO BUSHING AREA.
6. ON PILOT FWD AND AFT BUSHING CAPS (SHOWN ABOVE) DRILL #30 HOLE IN FACE OF BUSHING USING DRILL STOP SET TO .180".
7. INSTALL BRASS PLUG UNTIL IT MAKES CONTACT WITH THE AXLE PIN AND BACK OFF 1/8 OF A TURN, SET JAM-NUT.
8. REPEAT STEP 4 AND 7 ON PASSENGER SIDE BRASS PLUGS AND BUSHING CAPS.
9. GREASE ALL BUSHING UNTIL GREASE IS VISIBLE FROM RELIEF HOLES.
10. REINSTALL LH AND RH STRUT FAIRING ASSEMBLIES.
11. MAKE LOG ENTRY IN MAINTENANCE RECORDS THAT WIPAIRE SERVICE LETTER 123 HAS BEEN COMPLIED WITH.

HOLES ARE FOR PURPOSE OF GREASE RELIEF AND DO NOT NEED TO BE CLEANED OF ALL DEBRIS AFTER DRILLING

MATERIAL		NONE	
FINISH		---	
TITLE		WIPAIRE, INC. 1700 HENRY AVE. SOUTH ST. PAUL, MN 55075 (651) 451-1205	
PART NO.		1005302	
LETTER		123	
SCALE		N/A	
TOLERANCES		.XX = ±.015 .XXX = ±.005 X = ±.5	
THIRD ANGLE PROJECTION			
BREAK ALL EDGES .01-.03		Sheet 1 of 1	
ALL DIMENSIONS ARE AFTER FINISH		REV	
		A	



REVISION HISTORY			
REV	DATE	ECO	DR
A	8/30/11	22499	JRS
			DESCRIPTION
			INITIAL RELEASE

MP: NONE		TOLERANCES		SCALE		REV	
FINISH		PROJECTION		N/A		A	
N/A		.X = ±.25		B		PART NO.	
		.XX = ±.015		Sheet 2 of 2		1005302	
BREAK EDGES		.01-.03				TITLE	
ALL DIMS IN INCHES		& AFTER FINISH				MODIFIED AXLE BEAM BUSHING	
						SERVICE LETTER 123	
						1700 HENRY AVE. SOUTH - ST. PAUL, MN 55075	
						(651) 451-1205	
						WIPAIRE, INC.	

###END###