



<b>SERVICE LETTER NUMBER 156</b>			
<b>TITLE: PLUGGED BULKHEAD SEALANT REMOVAL</b>			
BY: M.DILLON	AIRCRAFT MAKE/MODEL(S):	FLOAT MODEL(S):	NOTE(S):
APP: C.WOKEN	Quest Kodiak 100	7000	MANDATORY COMPLIANCE
DATE: 03/19/14	Cessna 208 Series	8750	<b>S/L P/N 1008025</b>
REV: A	Cessna 208B Series		<b>ECO- 23612</b>

**FAA APPROVAL HAS BEEN OBTAINED FOR TECHNICAL DATA IN THIS PUBLICATION THAT AFFECTS STC OR TSO DESIGN COMPLIANCE**

**EFFECTIVITY:**

This service letter applies to:

Quest Kodiak 100 when equipped with Wipline 7000 Floats STC SA02848CH

Cessna 208 Series when equipped with Wipline 8750 Floats STC SA1311GL

Cessna 208B Series when equipped with Wipline 8750 Floats STC SA1311GL

**COMPLIANCE:**

Compliance with this service letter is mandatory.

**BACKGROUND:**

The partial bulkhead in the forward and baggage compartments of Wipline 7000 and 8750 floats has been found to be sealed to the bottom of the float keel thereby preventing water that enters the compartment forward of the partial bulkhead from reaching the pump out tube. As a result, water has the potential to collect in the compartments thereby adding to the overall weight of the floats and increasing the risk of corrosion.

**COMPLIANCE METHOD:**

Inspection of bulkhead and removal of any sealant between bulkhead and main keel in accordance with instructions in this service letter.

**APPROX. SHOP HOURS:**

This service letter will take approximately 4 labor hours to complete.

**WARRANTY INFORMATION:**

This service letter does not include any warranty, labor or parts.

## TECHNICAL DATA:

Copies of this service letter, float service manual, modification drawings, and float parts manual are available at [www.wipaire.com](http://www.wipaire.com).

For basic float model maintenance information, see Wipaire applicable Service Manual at [www.wipaire.com](http://www.wipaire.com).

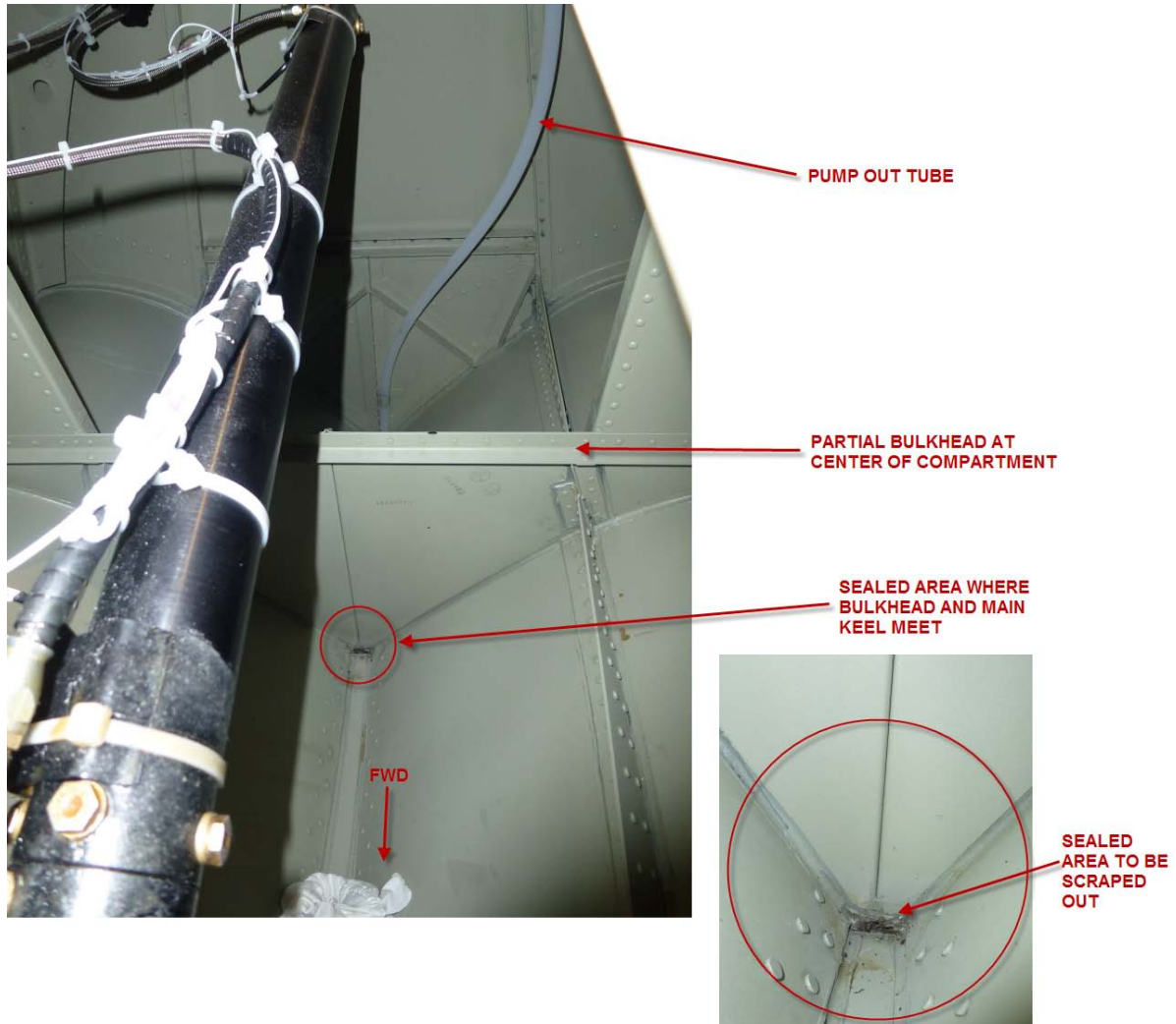
For basic float model parts information, see applicable Wipaire Parts Manual at [www.wipaire.com](http://www.wipaire.com).

## INSPECTION AND REPAIR PROCEDURE:

1. Remove covers from compartments between bulkheads #2 and #4 and the two baggage compartments in each float. A total of three bulkheads in each float will need to be inspected and repaired:
  - a. 8750 floats – bulkheads 3, 6, 8
  - b. 7000 floats – bulkheads 3, 5, 8

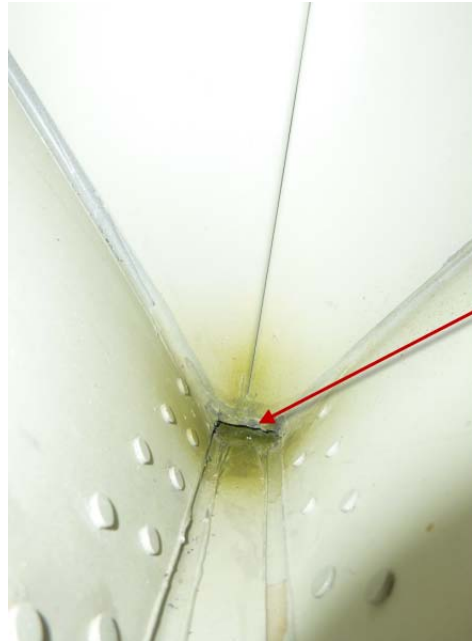


2. Inspect partial bulkheads (8750- #3, 6, 8 or 7000- #3, 5, 8) located in the middle of the compartments to confirm whether there is a complete seal between the bulkhead and main keel that will prevent water from flowing through to the pump-out tube. If there is no opening, proceed to Step 3.



3. Using an awl, perforate the existing sealant and work it loose. Use a small scraper or blade to remove the fragments until there is a clear area of approximately  $\frac{1}{4}$ " between the bulkhead and main keel to allow water to pass through.  
**NOTE: Use caution when removing sealant to avoid scraping or chipping the primer.**
4. Remove all sealant debris from float compartment.

5. If the primer was scraped in the removal process, re-prime the areas of bare metal after the sealant is removed.



AREA AFTER REMOVAL OF  
SEALANT AND PRIMER  
RE-APPLIED

#### NOTES:

- 1) Upon completion of inspection, enter information in float logbook for completion of Wipaire Service Letter 156.
- 2) Once service letter is accomplished, please visit [www.wipaire.com](http://www.wipaire.com) and update your aircraft service letter/kit record using the link found on the Customer Support dropdown menu under "Update Service Letter & Kit Compliance Status".

### END ###