



WIPLINE FLOATS • SKIS • MODIFICATIONS • AIRCRAFT SALES
AVIONICS • INTERIOR • MAINTENANCE • PAINT REFINISHING

SERVICE KIT 30

HINGED ACCESS DOORS AND BAGGAGE BAY FLOOR INSTALLATION

By: MAS	Aircraft Makes/Model(s): DeHavilland DHC-6 Series	Float Model(s): 13000 Series	Note(s): Optional Compliance Service Letter P/N 1002512
Approved: DRH			
Date: 2/20/2023			
Rev: E.1			

LOG OF REVISIONS

Revision	Description	Date
E	New document format; 1009671 was 1085H3-1MDC	12/13/2017
E.1	Merged Service Kit 30 with Service Letter 47. Obsoleted Service Kit 30. Superseded by Service Letter 47.	2/20/2023

FAA approval has been obtained for technical data in this publication that affects STC or TSO design compliance

Obsolete...Superseded By Service Letter 47

EFFECTIVITY:

This service letter applies to: DeHavilland DHC-6 Series with Wipline 13000 Amphibious or Straight Floats with fixed access covers installed per STC SA2CH

COMPLIANCE:

Optional compliance

BACKGROUND:

This service kit provides parts to replace the original fixed access covers with hinged baggage doors located on the top deck and install baggage bay floors

COMPLIANCE METHOD:

Install the parts included in this service kit in accordance with the Work Instruction section of this service letter

APPROXIMATE SHOP HOURS:

Installing the hinged access covers and baggage bay floors will take approximately 10 hours per float

WARRANTY INFORMATION:

Labor and parts not included for this modification

TECHNICAL DATA:

Copies of this service letter, associated service kit, float service manual, and float parts manual are available at www.wipaire.com

See photos and figures below for details to aid in performing this modification

See Table 1 below for a list of parts included in the service kit

1700 Henry Ave - Fleming Field (KSGS), South St. Paul, MN 55075

Phone: 651.451.1205 | Fax: 651.457.7858

www.wipaire.com



WIPLINE FLOATS • SKIS • MODIFICATIONS • AIRCRAFT SALES
 AVIONICS • INTERIOR • MAINTENANCE • PAINT REFINISHING

ITEMS PROVIDED IN SERVICE KIT (PER SET OF FLOATS)

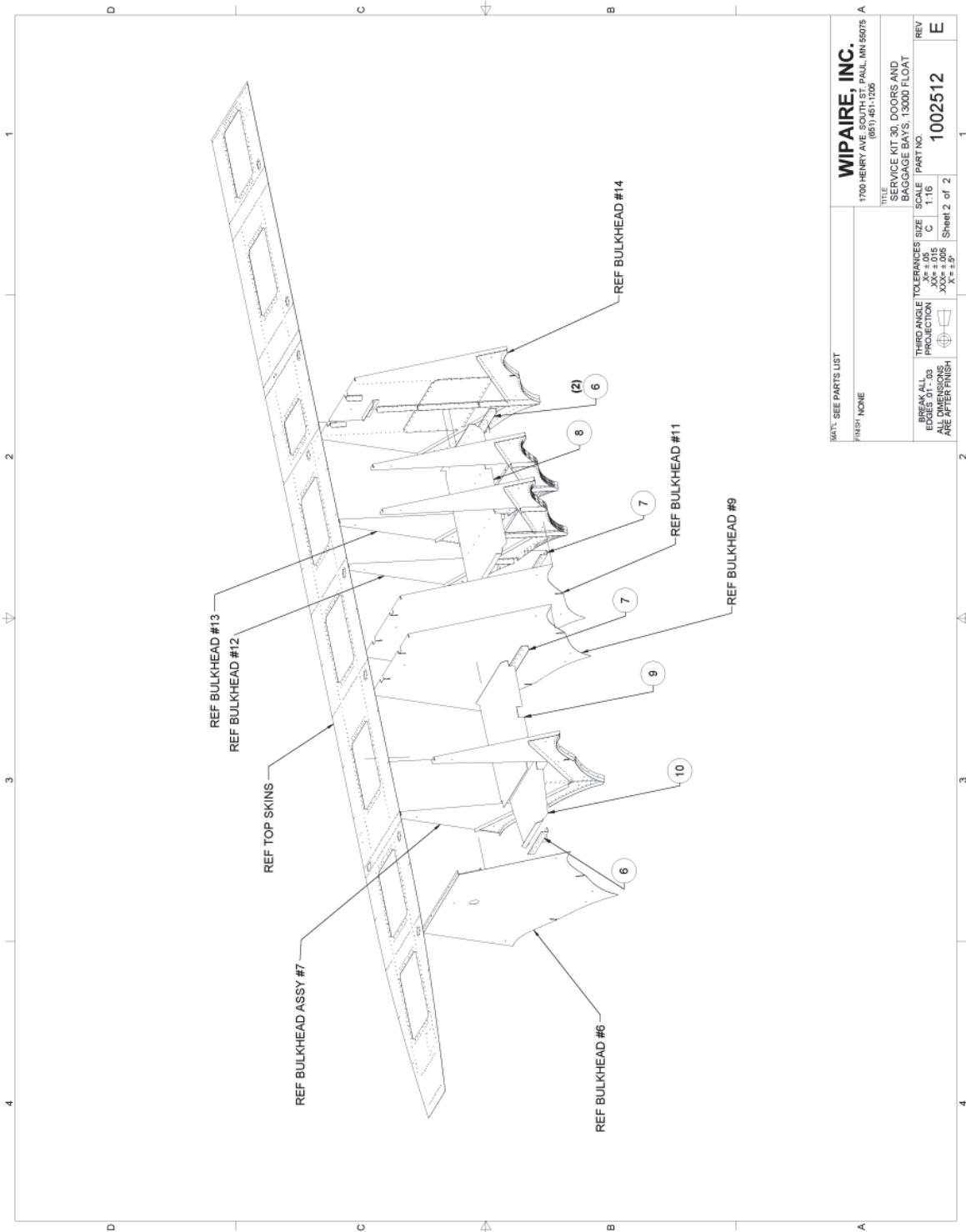
ITEM	QTY	PART NUMBER	DESCRIPTION
-	1	1002512-01	KIT, SERVICE KIT 30, HINGED ACCESS DOORS AND BAGGAGE BAY FLOOR INSTALLATION
1	4	10A01000-464	ASSEMBLY, DOOR, BAGGAGE BAY
2	4	13A01162-052	BAGGAGE LIP
3	8	1003425	TOP SKIN CROSS TIE ANGLE
4	28 FT	1009671	GASKET, DOOR
5	4	1002063	BAGGAGE LIP
6	6	1003672	ANGLE
7	4	1003673	ANGLE
8	2	1003675	PANEL
9	2	1003676	PANEL
10	2	1003677	PANEL
11	2	7A3-4205-1	PLACARD
12	2	7A3-4205-2	PLACARD
13	1	1004518	TEMPLATE
14	1	1004519	TEMPLATE
15	2	1005911	PUMPER TUBE
16	4	MS35489-19	GROMMET
17	92	SSTATP	FLOOR SCREW
18	36	CR3213-5-5	CHERRY MAX RIVET
19	12	CR3213-5-6	CHERRY MAX RIVET

TABLE 1

Obsolete...Superseded By Service Letter 47



WIPLINE FLOATS • SKIS • MODIFICATIONS • AIRCRAFT SALES
 AVIONICS • INTERIOR • MAINTENANCE • PAINT REFINISHING



WIPAIRE, INC. 1700 HENRY AVE SOUTH ST. PAUL, MN 55075 (651) 451-1233	
TITLE SERVICE KIT 30, DOORS AND BAGGAGE BAYS, 13000 FLOAT	
THIRD ANGLE PROJECTION	SCALE C 1:16
BREAK ALL EDGES OF .00 PROJECTION ARE AFTER FINISH	REV 1002512
FINISH: NONE	Sheet 2 of 2

Obsolete...Superseded By Service Letter 47

NOTES:

1. Upon completion of inspection, enter information in Aircraft Logbook for completion of Wipaire Service Kit 30
2. Once service kit is accomplished, please visit www.wipaire.com and update your aircraft service letter/kit record using the link found on the Customer Support dropdown menu under "Update Service Letter & Kit Compliance Status"