



WIPLINE FLOATS • SKIS • MODIFICATIONS • AIRCRAFT SALES
AVIONICS • INTERIOR • MAINTENANCE • PAINT REFINISHING

SERVICE LETTER NUMBER 178
8000 BAGGAGE COMPARTMENT TIE-DOWN

By: MAB	Aircraft Makes/Model(s): Dehavilland DHC-3 Cessna 208 Series	Float Model(s): 8000S 8000A	Note(s): Optional Compliance Service Letter P/N 1009447
Approved: SDW			
Date: 12/5/2019			
Rev: C			

LOG OF REVISIONS

Revision	Description	Date
A	Initial release	5/4/2017
B	Added Kit 1009447-01 to BOM	4/16/2019
C	Updated Tie Down Ring part number in BOM and drawing. Updated work instructions.	12/5/2019

FAA approval has been obtained for technical data in this publication that affects STC or TSO design compliance.

EFFECTIVITY:

All 8000 model floats

COMPLIANCE:

Optional compliance

BACKGROUND:

Tie-down rings have been created for the 8000 model floats for baggage to be strapped down.

COMPLIANCE METHOD:

Install kit per Work Instruction section of this manual.

APPROXIMATE SHOP HOURS:

Installing 1 kit will take approximately 2 labor hours to complete.

WARRANTY INFORMATION:

This service letter does not include warranty for labor and parts.

TECHNICAL DATA:

Copies of this service letter, associated service kit, float service manual, and float parts manual are available at www.wipaire.com.

See photo below for details to aid in performing this modification.

See Table 1 below for a list of parts included in the service kit.

For basic float model maintenance information, see applicable Wipaire service manual at www.wipaire.com.

For basic float model parts information, see applicable Wipaire parts manual at www.wipaire.com.



WIPLINE FLOATS • SKIS • MODIFICATIONS • AIRCRAFT SALES
 AVIONICS • INTERIOR • MAINTENANCE • PAINT REFINISHING

ITEMS PROVIDED IN SERVICE KIT (1009447-01)

ITEM	QTY	PART NUMBER	DESCRIPTION
1	2	1009445	Doubler
2	2	33815T51	Tie-down Ring
3	2	MS21044N6	Nut
4	4	NAS1149F0616P	Washer
5	2	AN6-7A	Bolt
6	1	8835T96	Elastic Tie-down cord
7	14	MS20470AD4-5.5	Rivets

TABLE 1

NOTE: 1 kit provides hardware to complete 1 bulkhead (inboard and outboard side). A total of 4 kits are needed to install tie-down rings at each bulkhead in both baggage compartments on 1 float. Reference figure 1.

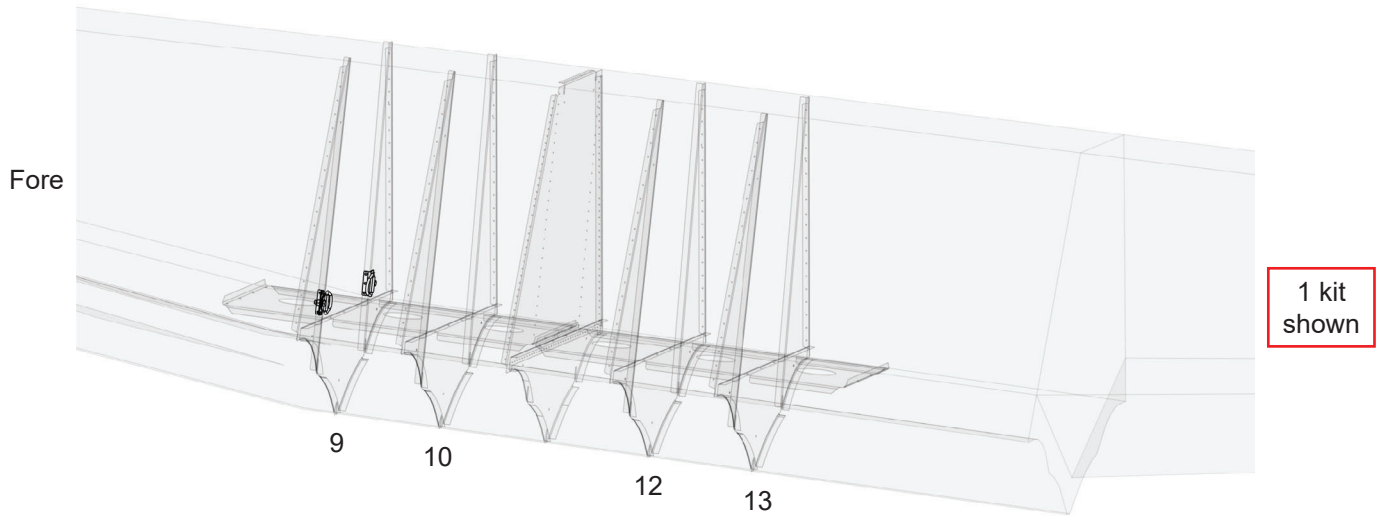
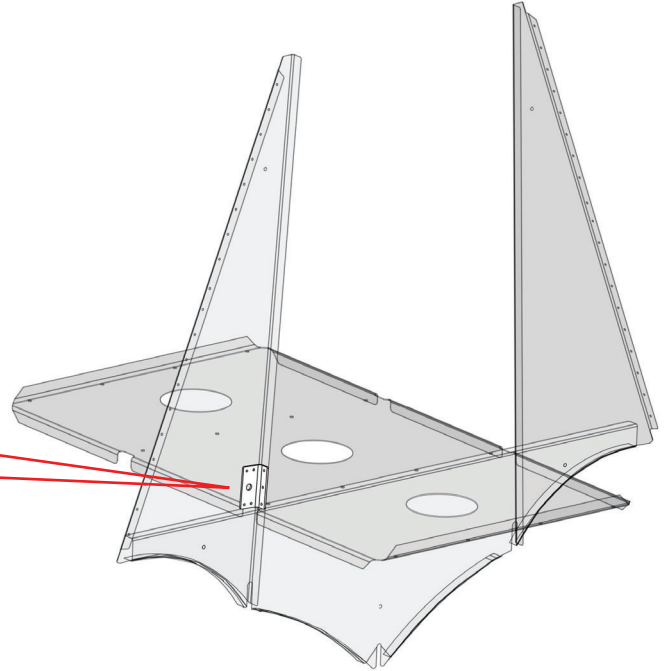
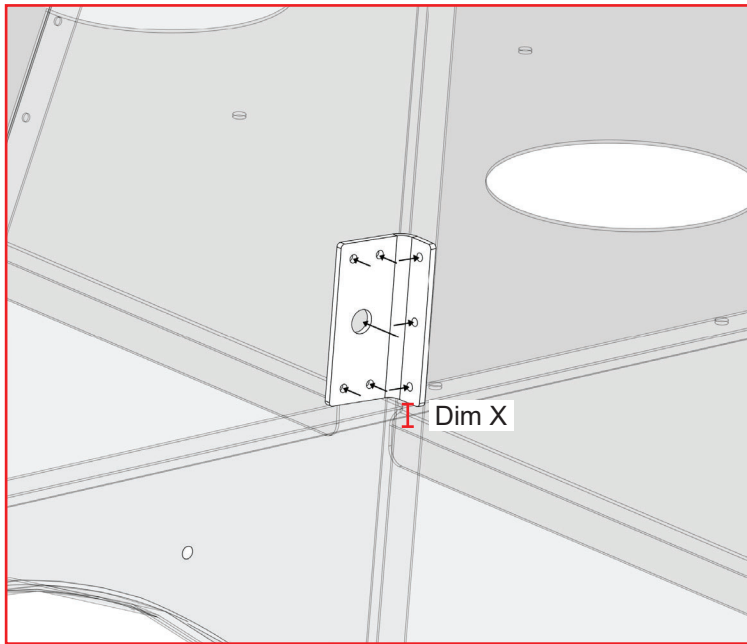


FIGURE 1: APPLICABLE BULKHEAD ASSEMBLIES

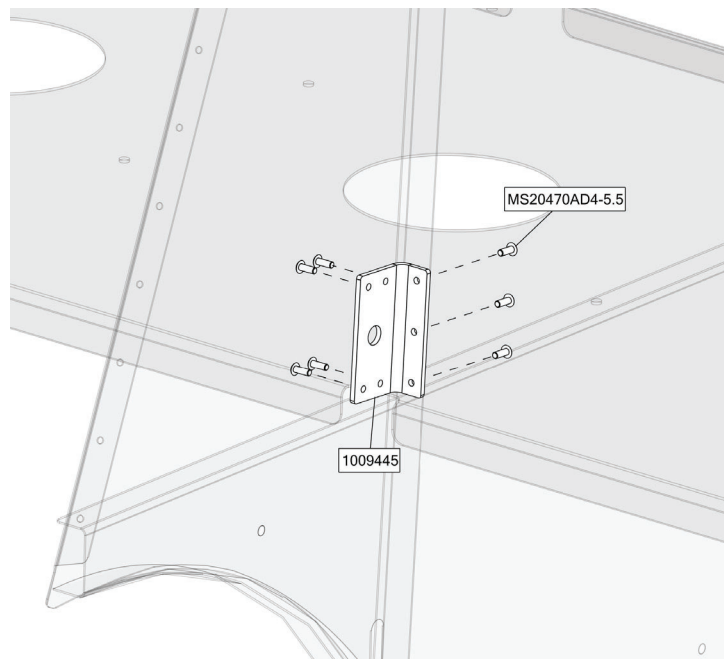
WORK INSTRUCTION

1. Gain access to bulkheads 9, 10, 12, and 13 through the top deck baggage doors
2. Match drill doubler 1009445 to fore side of bulkhead inside of flange as shown

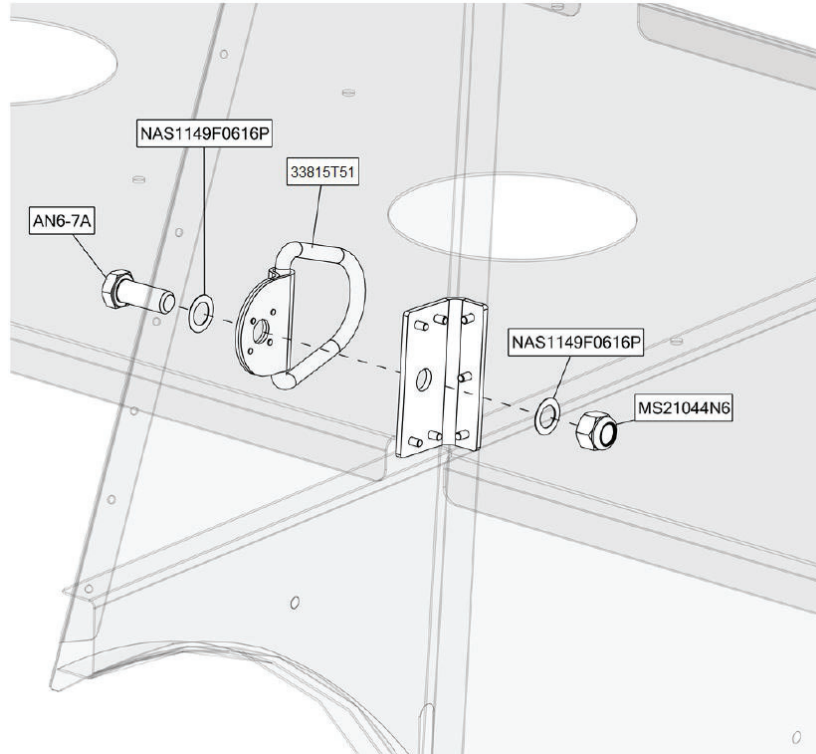


Dim X is recommended approximately .5"
from the bottom of the doubler to the top of the
baggage floor but may vary per installer discretion

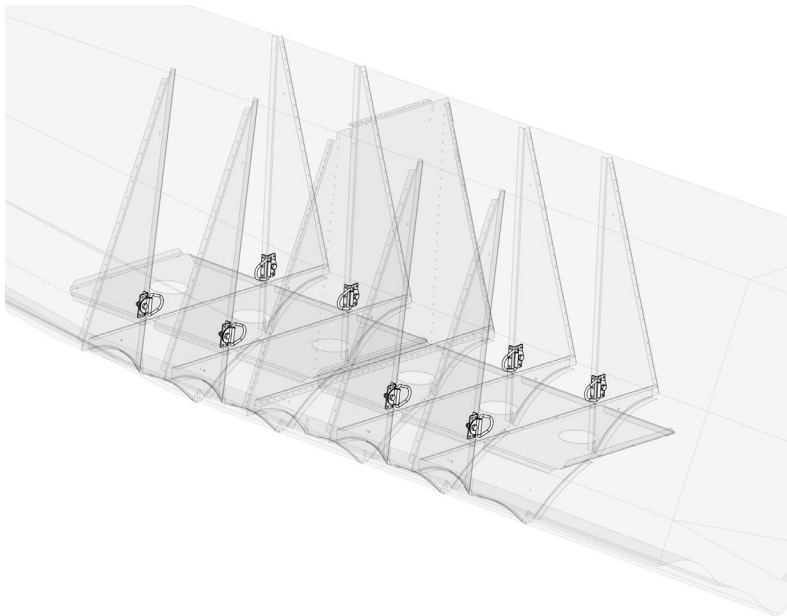
3. Rivet doubler 1009445 in place as shown



4. Install tie-down kit as shown. Install with corrosion inhibitor, such as Tef Gel or equivalent.



5. Repeat as needed per quantity of kits purchased.



NOTE: Upon completion of inspection, enter information in Aircraft Logbook for completion of Wipaire Service Letter 178.