

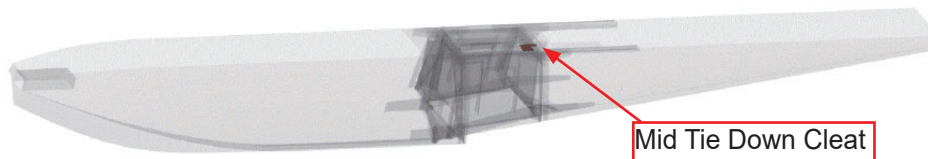


WIPLINE FLOATS • SKIS • MODIFICATIONS • AIRCRAFT SALES  
AVIONICS • INTERIOR • MAINTENANCE • PAINT REFINISHING

**SERVICE LETTER NUMBER 195**  
**8750 MID TIE DOWN CLEAT INSTALLATION**

<b>By:</b> MAB	<b>Aircraft Makes/Model(s):</b> Cessna 208 Cessna 208B	<b>Float Model(s):</b> 8750S 8750A	<b>Note(s):</b> Optional Compliance Service Letter P/N 1008216
<b>Approved:</b> SDW			
<b>Date:</b> 3/14/2019			
<b>Rev:</b> B			

FAA approval has been obtained for technical data in this publication that affects STC or TSO design compliance



**EFFECTIVITY:**

All 8750 model floats

**COMPLIANCE:**

Optional compliance

**BACKGROUND:**

The purpose of this service letter is to aid in the installation of an additional tie down cleat located in the mid section of the 8750 float. The doubler brackets were implemented into standard production S/N 87059

**COMPLIANCE METHOD:**

Install kit per Work Instruction section of this manual

**APPROXIMATE SHOP HOURS:**

Installing 1 kit will take approximately 2 labor hours to complete

**WARRANTY INFORMATION:**

This service letter does not include warranty for labor and parts

**TECHNICAL DATA:**

Copies of this service letter, associated service kit, float service manual, and float parts manual are available at [www.wipaire.com](http://www.wipaire.com)

See photos below for details to aid in performing this modification

See Table 1 below for a list of parts included in the service kit

For basic float model maintenance information, see applicable Wipaire service manual at [www.wipaire.com](http://www.wipaire.com)

For basic float model parts information, see applicable Wipaire parts manual at [www.wipaire.com](http://www.wipaire.com)



WIPLINE FLOATS • SKIS • MODIFICATIONS • AIRCRAFT SALES  
 AVIONICS • INTERIOR • MAINTENANCE • PAINT REFINISHING

**ITEMS PROVIDED IN SERVICE KIT (1008216-01) S/N 87059 AND LATER**

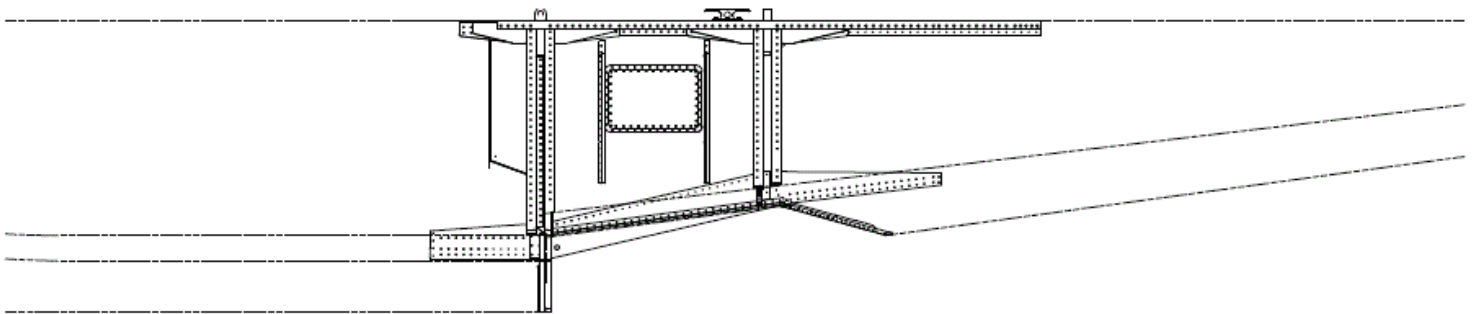
ITEM	QTY	PART NUMBER	DESCRIPTION
1	2	6A01213-003	CLEAT, TIE DOWN
2	8	AN4-7A	BOLT, 1/4-28, 0.4375 GRIP, UNDRILLED, STEEL
3	8	MS21044N4	NUT, LOCKING, REGULAR HEIGHT, 1/4-28 UNF
4	4	NAS1149D0416J	WASHER, 0.265 ID, 0.016 THK, ALUMINUM
5	12	NAS1149D0463J	WASHER, 0.265 ID, 0.063 THK, ALUMINUM

**ITEMS PROVIDED IN SERVICE KIT (1008216-02) S/N 87058 AND PRIOR**

ITEM	QTY	PART NUMBER	DESCRIPTION
1	1	1008211	DOUBLER, TIE DOWN CLEAT, MID, LEFT FLOAT
2	1	1008212	DOUBLER, TIE DOWN CLEAT, MID, RIGHT FLOAT
3	2	6A01213-003	CLEAT, TIE DOWN
4	8	AN4-7A	BOLT, 1/4-28, 0.4375 GRIP, UNDRILLED, STEEL
5	8	MS21044N4	NUT, LOCKING, REGULAR HEIGHT, 1/4-28 UNF
6	4	NAS1149D0416J	WASHER, 0.265 ID, 0.016 THK, ALUMINUM
7	12	NAS1149D0463J	WASHER, 0.265 ID, 0.063 THK, ALUMINUM

**TABLE 1**

**NOTE:** 1 kit provides hardware to complete 2 mid cleat installs. A total of 1 kit is needed to install on both floats.



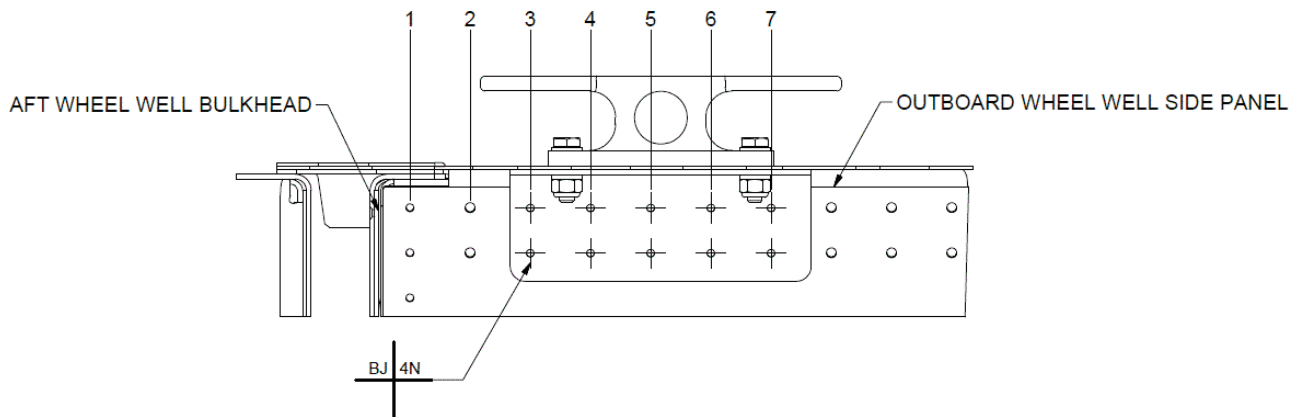
**Side view of left float (Scale 1/12)**

**NOTE:** If float does not have doubler brackets, install doubler per instructions below. If doubler is already available on float, skip to install cleat instructions.

## WORK INSTRUCTION

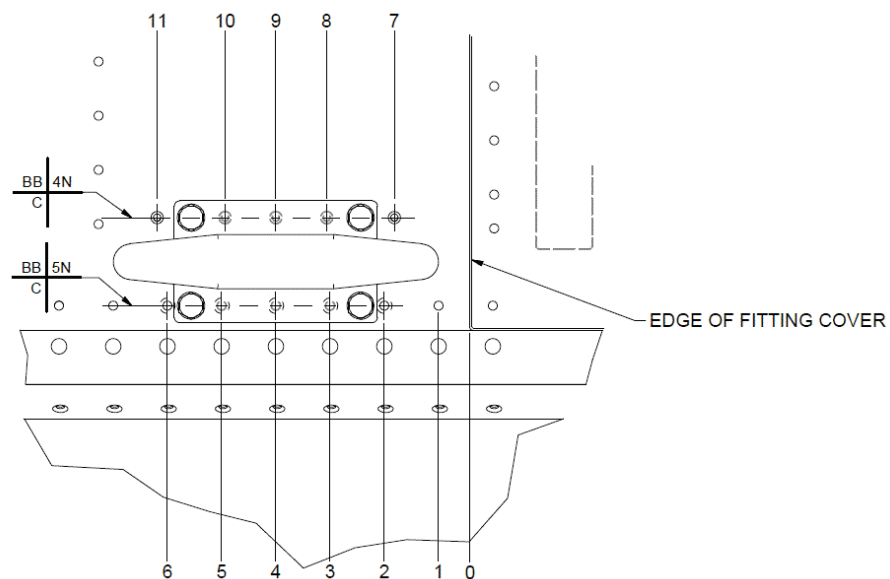
### INSTALL DOUBLER:

1. Remove 10 rivets from wheel well side panel at location 3 through 7. (See Figure 1)
2. Remove 5 rivets from topskin at location 2 through 6. (See Figure 2)
3. Position the doubler as shown and fasten to the wheel well side panel using noted fasteners (See Figure 1)
4. Match drill the rivet holes from the doubler through the top skin.
5. Countersink holes 2 through 11 (See Figure 2) and flush rivet with noted fasteners.



**Figure 1**

Inside of wheel looking outboard (Scale 1/2)



**Figure 2**

Top View (Scale 1/2)



WIPLINE FLOATS • SKIS • MODIFICATIONS • AIRCRAFT SALES  
AVIONICS • INTERIOR • MAINTENANCE • PAINT REFINISHING

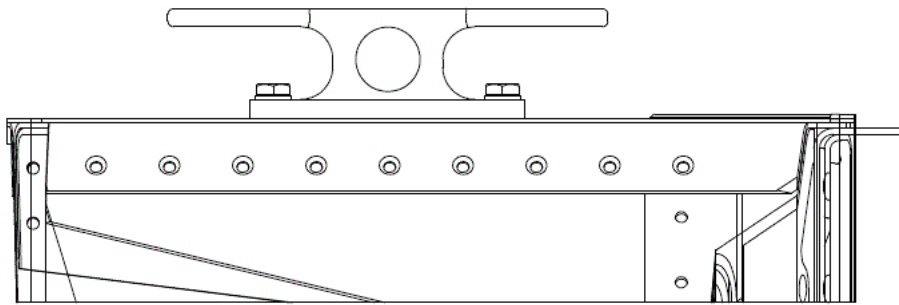
## INSTALL CLEAT:

1. Drill the 0.25 (2) bold holes from the doubler through the topskin.
2. Temporarily locate the cleat onto the topskin using the 2 bolt holes.
3. Match drill remaining 0.25 (2) holes from the cleat through the topskin, gunwall, and bathtub fitting.
4. Remove fitting, pre-treat any bare metal and apply sealant to the bottom of the cleat.
5. Fasten with noted hardware.

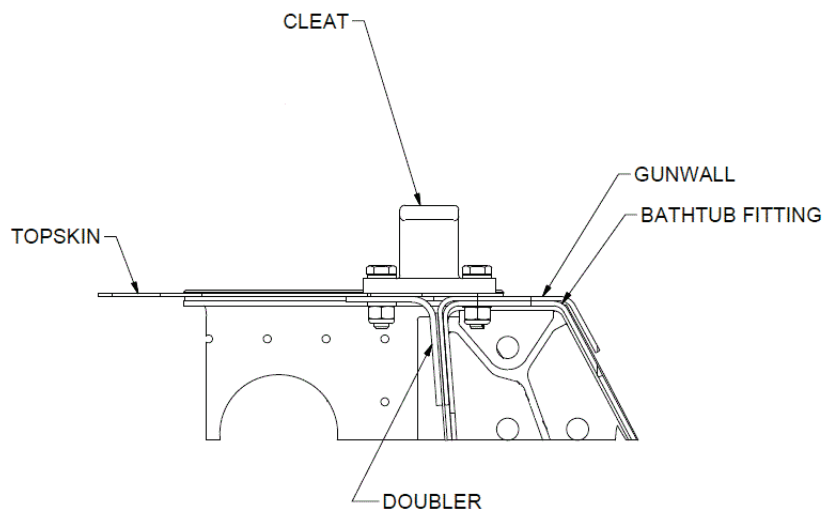
## NOTES:

1. Upon completion of inspection, enter information in Aircraft Logbook for completion of Wipaire Service Letter 191.
2. Once service letter is accomplished, please visit [www.wipaire.com](http://www.wipaire.com) and update your aircraft service letter/kit record using the link found on the Customer Support dropdown menu under "Update Service Letter & Kit Compliance Status."

## ADDITIONAL VIEWS



Side view (Scale 1/2)



Inside of wheel well looking aft (Scale 1/2)