



WIPLINE FLOATS • SKIS • MODIFICATIONS • AIRCRAFT SALES
AVIONICS • INTERIOR • MAINTENANCE • PAINT REFINISHING

SERVICE LETTER 184

8750 BAGGAGE FOAM REDUCTION

Aircraft Makes/Model(s):	Float Model(s):	Compliance: Optional	By: MAB
Cessna 208, 208B	8750A, 8750S	Part Number: 1009885	Approved: SDW
		Date: 6/3/2019	Revision: A

LOG OF REVISIONS

Revision	Description	Date
A	Initial release	6/3/2019

FAA approval has been obtained for technical data in this publication that affects STC or TSO design compliance

EFFECTIVITY:

This service letter applies to Cessna models 208 and 208B with Wipline 8750 Amphibious or 8750 Straight Floats S/N 87206 and prior installed per STC SA01311GL

COMPLIANCE:

Optional compliance

BACKGROUND:

Some floats have been experiencing water compilation next to the buoyancy baggage foam inserts due to the baggage foam not allowing enough space in the baggage compartments for water to drain adequately

COMPLIANCE METHOD:

Remove 1" of foam from the bottom of the center buoyancy baggage foam inserts to allow for more space for water disbursement

APPROXIMATE SHOP HOURS:

Removing 1" from the bottom of the center buoyancy baggage foam inserts will take approximately 2 hours per float set (2 baggage compartments per float)

WARRANTY INFORMATION:

This service letter does not include warranty for labor

TECHNICAL DATA:

Copies of this service letter, associated service kit (if applicable), float service manual, and float parts manual are available at www.wipaire.com

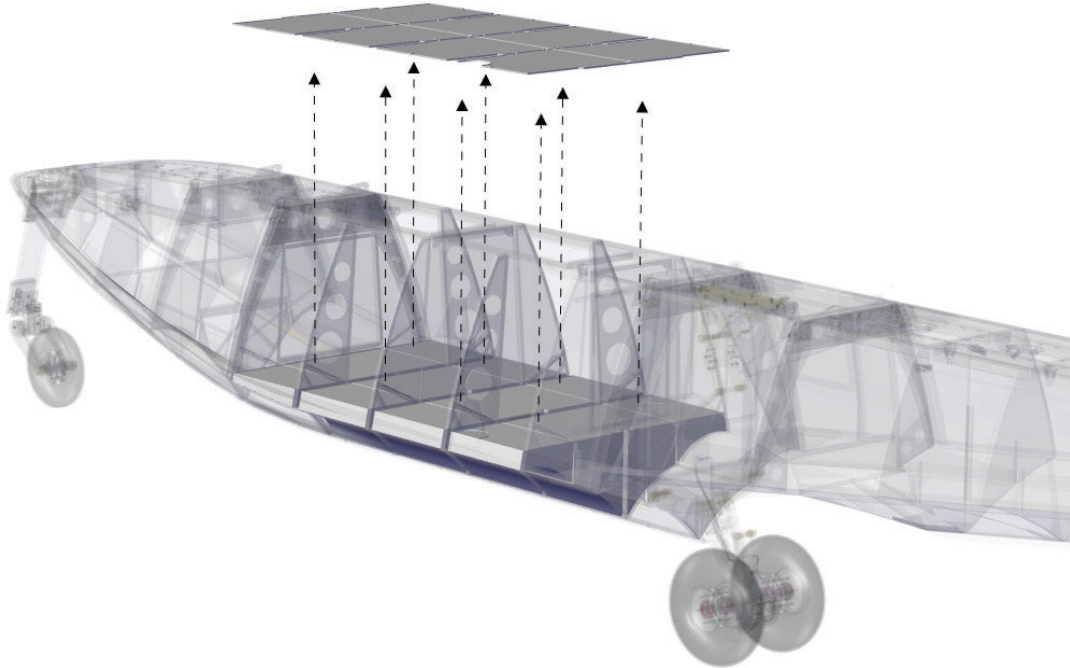
1700 Henry Ave - Fleming Field (KSGS), South St. Paul, MN 55075

Phone: 651.451.1205 | Fax: 651.457.7858

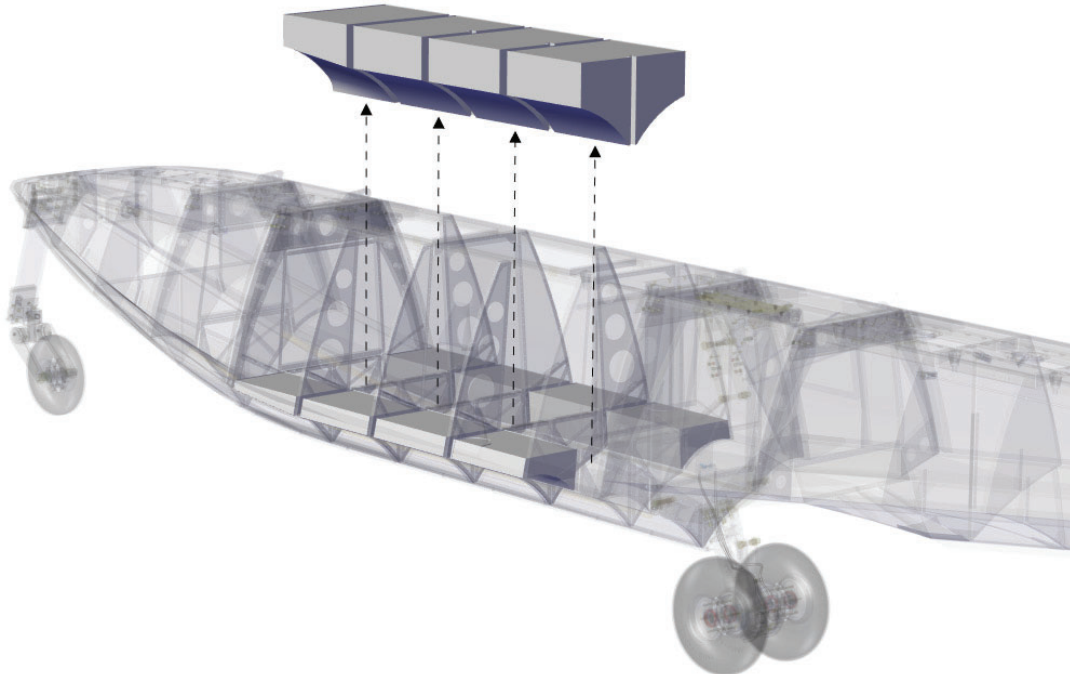
www.wipaire.com

WORK INSTRUCTION

1. Open baggage compartments and remove AN screws and foam board baggage floor panels to gain access to the buoyancy foam



2. Remove center buoyancy baggage foam inserts



3. Remove 1 inch of foam from bottom of center buoyancy baggage foam inserts as shown below

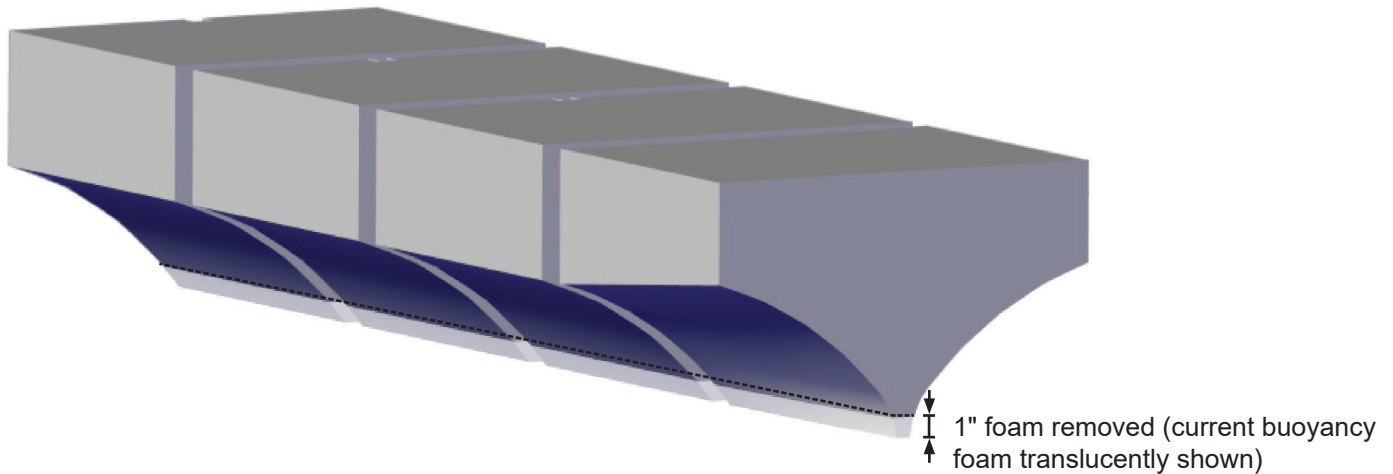


FIGURE 1 - MODIFIED BUOYANCY FOAM

4. Reinstall the modified center buoyancy baggage foam inserts
5. Reinstall foam board baggage floor panels and AN screws

AIRCRAFT CLOSING AND RETURN TO SERVICE

1. Close baggage compartments
2. Upon completion of inspection, enter information in Aircraft Logbook for completion of this Wipaire service letter
3. Visit www.wipaire.com and update your aircraft service letter/kit record using the link found on the Customer Support dropdown menu under "Update Service Letter & Kit Compliance Status"