



WIPLINE FLOATS • SKIS • MODIFICATIONS • AIRCRAFT SALES
AVIONICS • INTERIOR • MAINTENANCE • PAINT REFINISHING

SERVICE LETTER 204

8750 Anchor Mount Installation

Aircraft Makes/Model(s):	Float Model(s):	Compliance: Optional	By: MAB
Cessna 208, 208B	8750	Part Number: 1011194	Approved: SDW
		Date: 1/28/2020	Revision: A

LOG OF REVISIONS

Revision	Description	Date
A	Initial release	1/28/2020

FAA approval has been obtained for technical data in this publication that affects STC or TSO design compliance.

EFFECTIVITY:

This service letter applies to Cessna models 208 and 208B with Wipline 8750 Floats installed per STC SA1311GL.

COMPLIANCE:

Optional compliance

BACKGROUND:

An optional anchor mount has been designed to install an anchor in the baggage compartment.

COMPLIANCE METHOD:

Install provided parts as shown in the Work Instruction section of this service letter.

APPROXIMATE SHOP HOURS:

The work instruction for this service letter will take approximately 2 labor hours.

WARRANTY INFORMATION:

This service letter does not include warranty for labor and parts.

TECHNICAL DATA:

Copies of this service letter, associated service kit (if applicable), float service manual, and float parts manual are available at www.wipaire.com. The anchor mount is designed to fit a folding 7 lb Fortress anchor FX-11. (Anchor not provided with this kit).



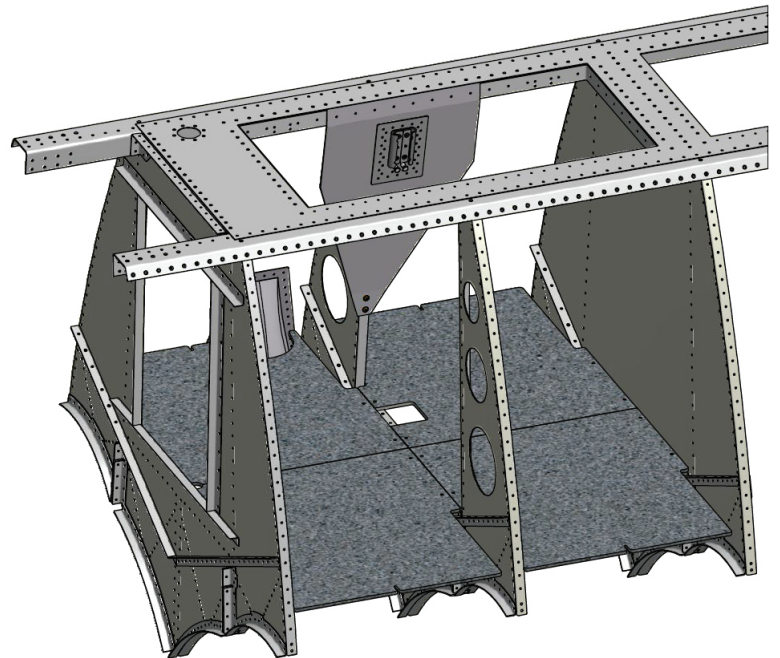
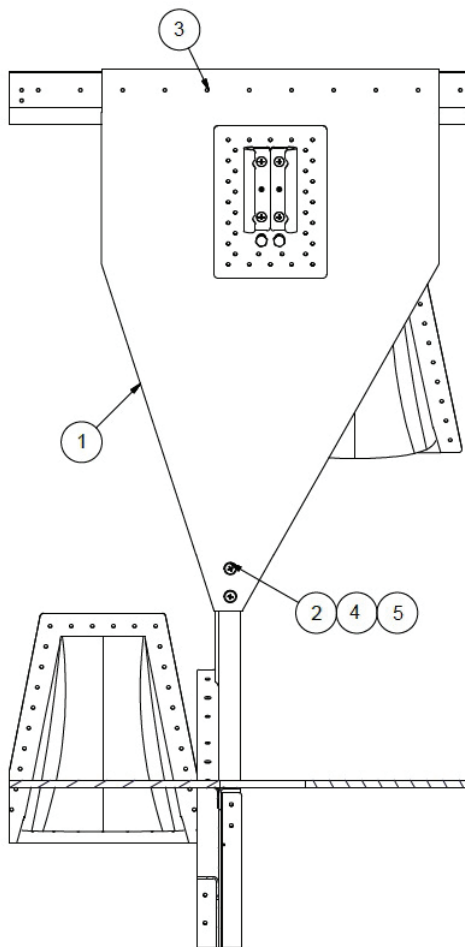
1700 Henry Ave - Fleming Field (KSGS), South St. Paul, MN 55075

Phone: 651.451.1205 | Fax: 651.457.7858

www.wipaire.com

ITEMS PROVIDED IN SERVICE KIT 1011194-01

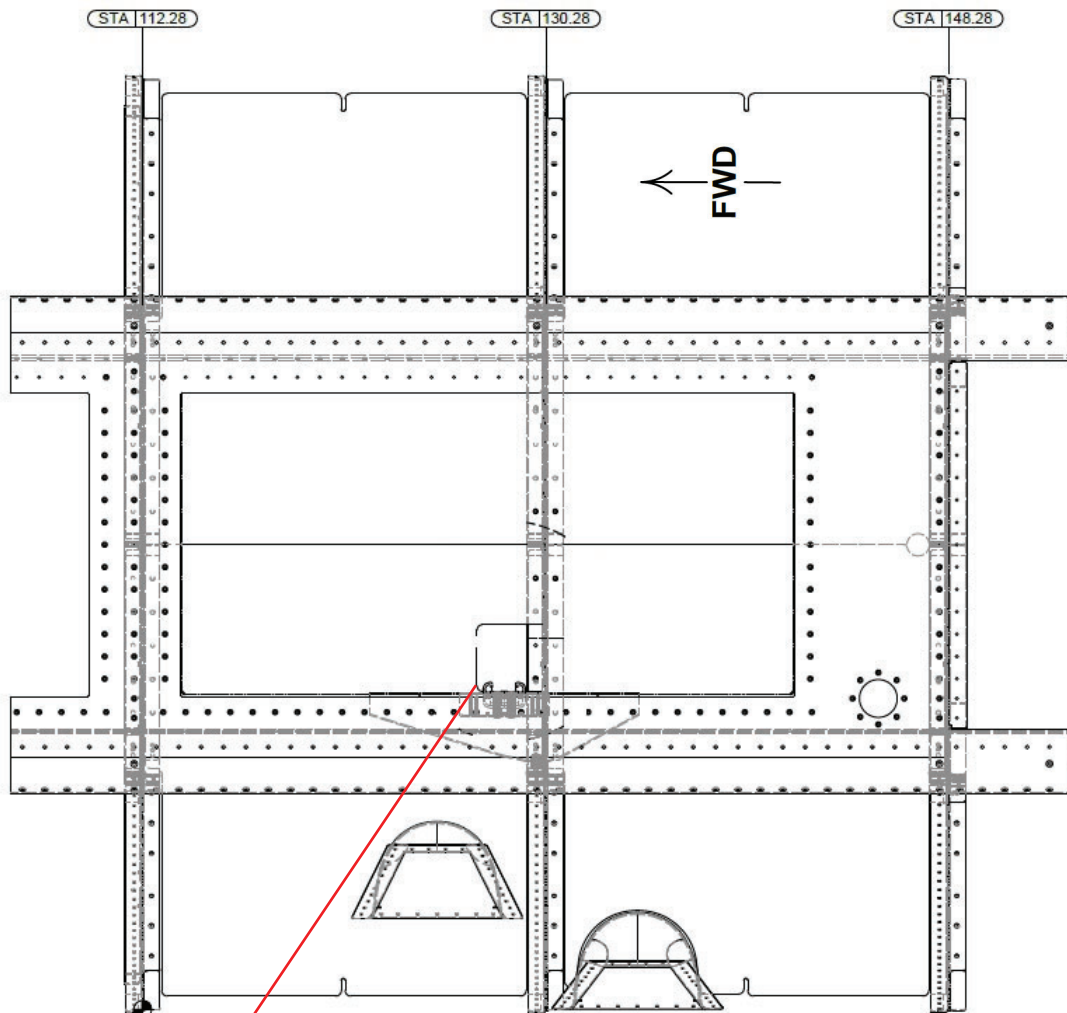
ITEM	QTY	PART NUMBER	DESCRIPTION
1	1	1006585	ASSEMBLY, MOUNT SYSTEM, ANCHOR PLATE, 8750
2	2	AN525-10R8	SCREW, WASHER HEAD
3	8	CR3213-4-2	RIVET
4	2	MS21044C3	NUT
5	2	NAS1149D0332J	WASHER



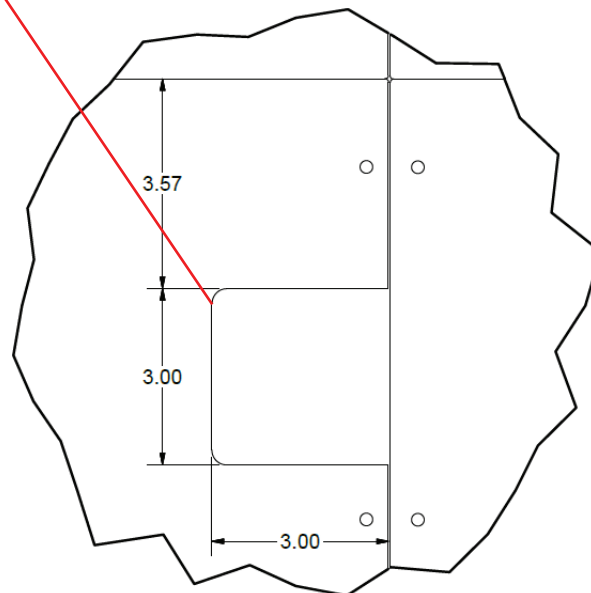
Work Instruction

1. Starting with the fourth rivet from the rear of the baggage compartment lip, remove eight rivets and rivet anchor mount assembly to lip.

2. Match drill bottom screw holes in bulkhead flange at bulkhead station 130.28.



3. Cut out hole in baggage floor as shown.



4. If anchor chain is used, ensure it is secured to prevent damage to float skins.



Anchor Mounted on Bracket

FX-11 Anchor Example (Not included in kit)



Aircraft Closing & Return to Service

1. Upon completion of inspection, enter information in Aircraft Logbook for completion of Wipaire Service Letter 204.