



WIPLINE FLOATS • SKIS • MODIFICATIONS • AIRCRAFT SALES
AVIONICS • INTERIOR • MAINTENANCE • PAINT REFINISHING

SERVICE LETTER 203

6100 Riveted Float Splash Guard

Aircraft Makes/Model(s):	Float Model(s):	Compliance: Optional	By: MAB
DeHavilland DHC-2 Pilatus PC-6	6100 Riveted Floats S/N 61500 and Later	Part Number: 1011149 Date: 7/9/2020	Approved: SDW Revision: A

LOG OF REVISIONS

Revision	Description	Date
A	Initial release	7/9/2020

FAA approval has been obtained for technical data in this publication that affects STC or TSO design compliance.

EFFECTIVITY:

This service letter applies to DeHavilland model DHC-2 and Pilatus model PC-6 with Wipline 6100 Floats serial numbers 61500 and later installed per STC SA610GL, SA309CH, or SA227CH.

COMPLIANCE:

Optional compliance

BACKGROUND:

Customers have expressed a need for a splash guard to reduce the amount of water that is splashed onto the propeller while conducting water takeoffs and landings. This service letter provides a method to install the splash guard onto riveted floats.

COMPLIANCE METHOD:

Perform installation as shown in the Work Instruction section of this service letter for both LH float and RH float.

APPROXIMATE SHOP HOURS:

Installing the splash guards will take approximately 6 labor hours per float set.

WARRANTY INFORMATION:

This service letter does not include warranty for labor and parts.

TECHNICAL DATA:

Copies of this service letter, associated service kit (if applicable), float service manual, and float parts manual are available at www.wipaire.com.

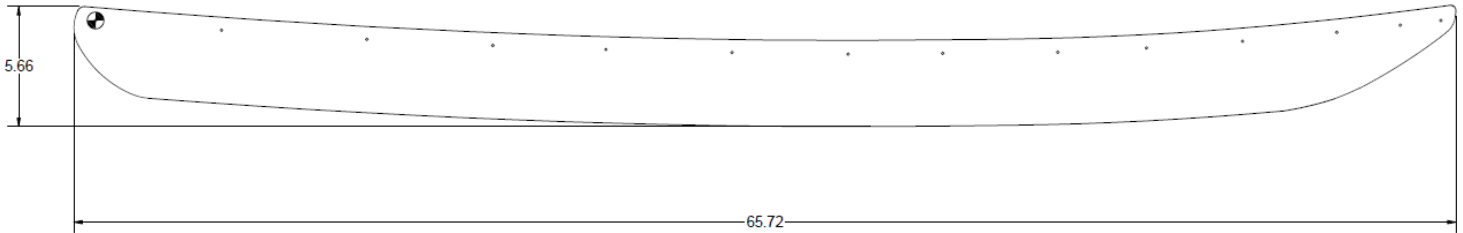
1700 Henry Ave - Fleming Field (KSGS), South St. Paul, MN 55075

Phone: 651.451.1205 | Fax: 651.457.7858

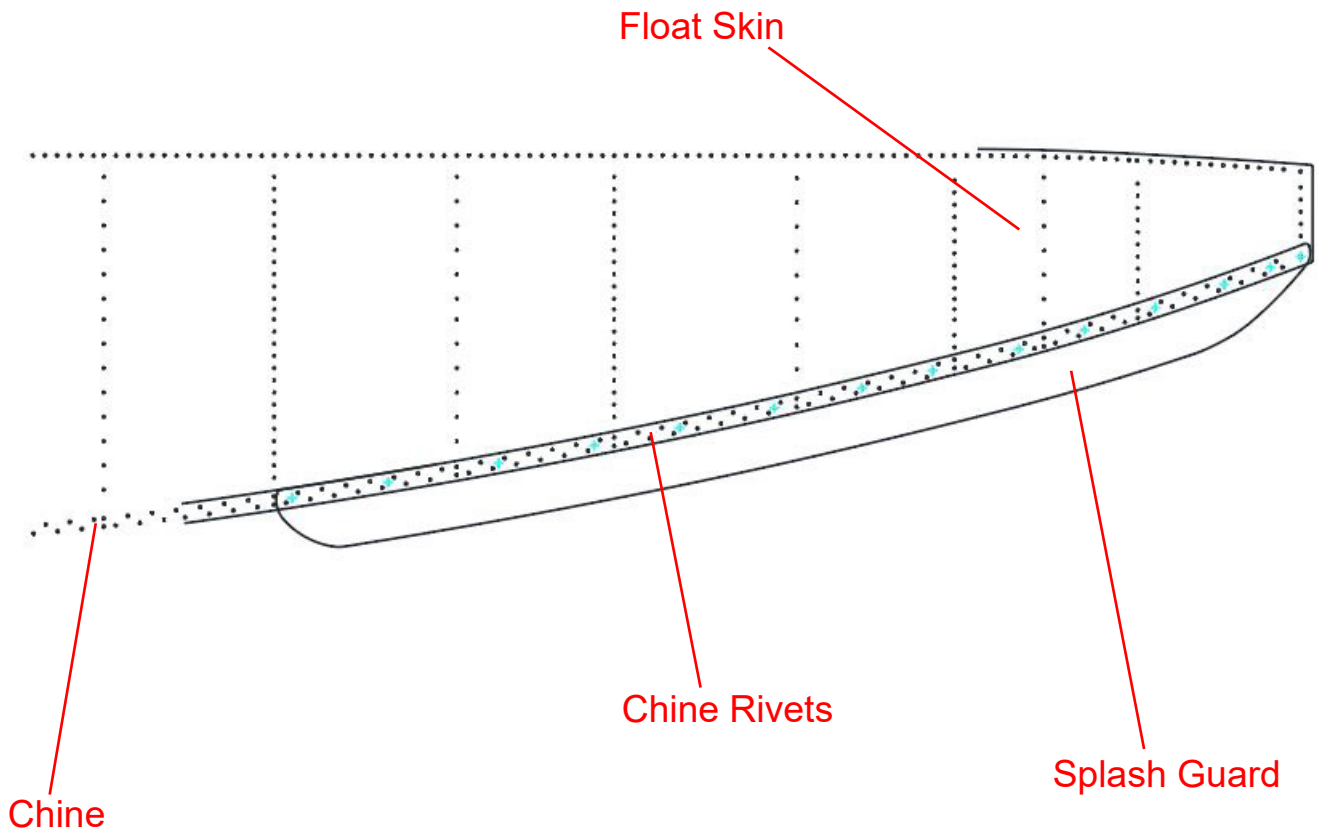
www.wipaire.com

ITEMS PROVIDED IN SERVICE KIT 101149-01 (RIVETED FLOAT SET)

ITEM	QTY	PART NUMBER	DESCRIPTION
1	2	1011353	GUARD, SPLASH, 6100 RIVETED



1011353 Guard, Splash

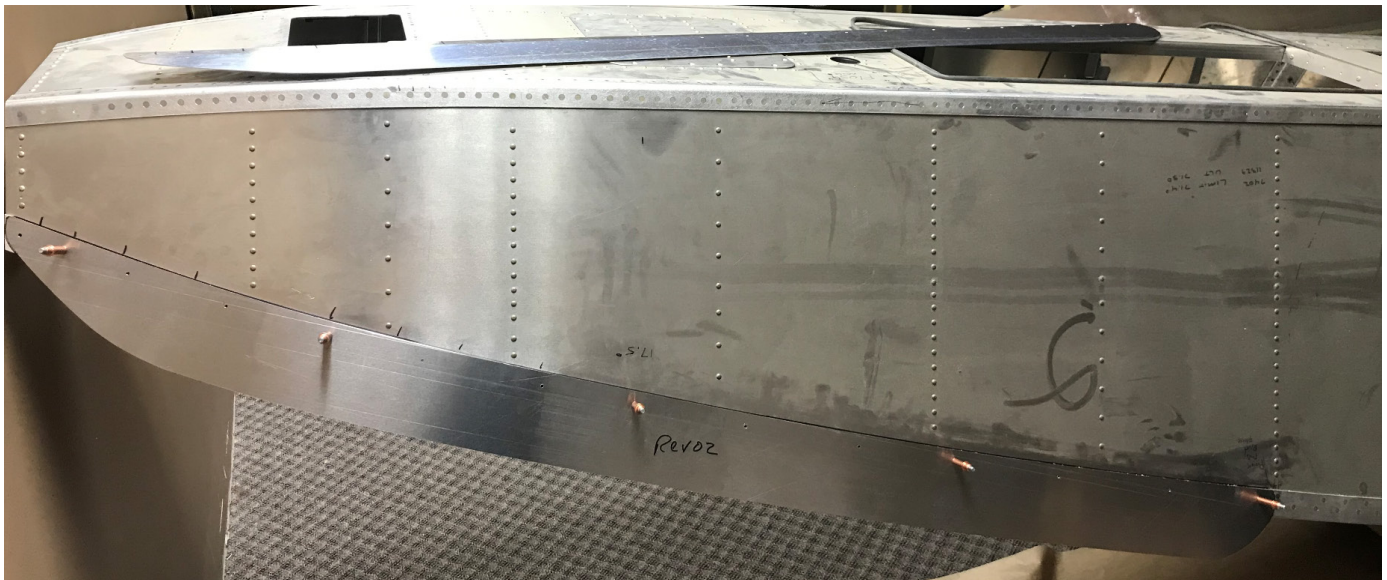


**Example of Splash Guard Against
Chine and Float Skin**

WORK INSTRUCTION

Riveted Float Serial Numbers 61500 and Later:

1. Remove flush rivet on float as shown in image below. This will allow you to locate the FWD hole for the splash guard.
2. Position splash guard along top of chine edge. Match drill remaining splash guard holes and debur. Cleco in place.



3. Place Filler Washer, #5 Rivet P/N LS5931A72 in FWD hole to fill in countersunk hole.
4. Wet install splash guard with PR-1422 B or equivalent.
5. Shoot button head rivet MS20470AD5-10 in FWD hole location only.
6. Shoot button head rivets MS20470AD4-6.5 in remaining drilled holes.
7. Edge seal exterior of splash guard.
8. Perform water leak check.



Splash Guard

DHC-2 With Splash Guard Installed

Aircraft Closing & Return to Service

1. Upon completion of inspection, enter information in Aircraft Logbook for completion of Wipaire Service Letter 203.