



WIPLINE FLOATS • SKIS • MODIFICATIONS • AIRCRAFT SALES
AVIONICS • INTERIOR • MAINTENANCE • PAINT REFINISHING

SERVICE LETTER 224

Sealing 3730A Float Nose Gear Retraction System

Aircraft Makes/Model(s):	Float Model(s):	Compliance: Mandatory	By: MAB
Textron Aviation 185 Series & 206 Series	3730A	Part Number: 1011794	Approved: SDW
		Date: 1/7/2021	Revision: A

LOG OF REVISIONS

Revision	Description	Date
A	Initial release	1/7/2021

FAA approval has been obtained for technical data in this publication that affects STC or TSO design compliance.

EFFECTIVITY:

This service letter applies to Textron Aviation models 185 and 206 with Wipline 3730 Amphibian Floats installed per STC SA18GL, or STC SA666CE, or STC SA7GL, or STC SA805CE.

COMPLIANCE:

Mandatory

BACKGROUND:

If seal checks have not been performed through guidance of the Wipaire 3730 Service Manual, there is potential for water ingress through the nose gear box attach points. This service letter directs a one-time check of this area and direction to continue inspection of this area via the service manual.

COMPLIANCE METHOD:

Perform work as shown in the Work Instruction section of this service letter.

APPROXIMATE SHOP HOURS:

The work instruction for this service letter will take approximately 2 labor hours.

WARRANTY INFORMATION:

This service letter does not include warranty for labor and parts.

TECHNICAL DATA:

Copies of this service letter, associated service kit (if applicable), float service manual, and float parts manual are available at www.wipaire.com.

1700 Henry Ave - Fleming Field (KSGS), South St. Paul, MN 55075

Phone: 651.451.1205 | Fax: 651.457.7858

www.wipaire.com

Work Instruction

Reference Figure 1

1. If needed, remove the nose cap to gain access to the front of the nose gear box. Inspect the attaching nose box flange for proper amount of sealant. An example of a flange that needs more sealant is shown in Figure 1. Below is a list of approved float sealants.

Approved Float Sealant:

- 890 B2 or B4, Pro Seal Company
 - PR 1440 C, PPG Aerospace
 - 1422 B2, B4 or B6, Pro Seal Company
 - RTV Silicones, General Electric
 - SIKAFLEX 201 or 252, Sika Manufacturing
2. Inspect the exterior of the gear box from inside the FWD most float compartment. Shine a flashlight to check for missing sealant. Figure 1 shows light from the float compartment entering the nose tracks. In this example, as shown in Figure 2, the gear track attach locations could be missing sealant.

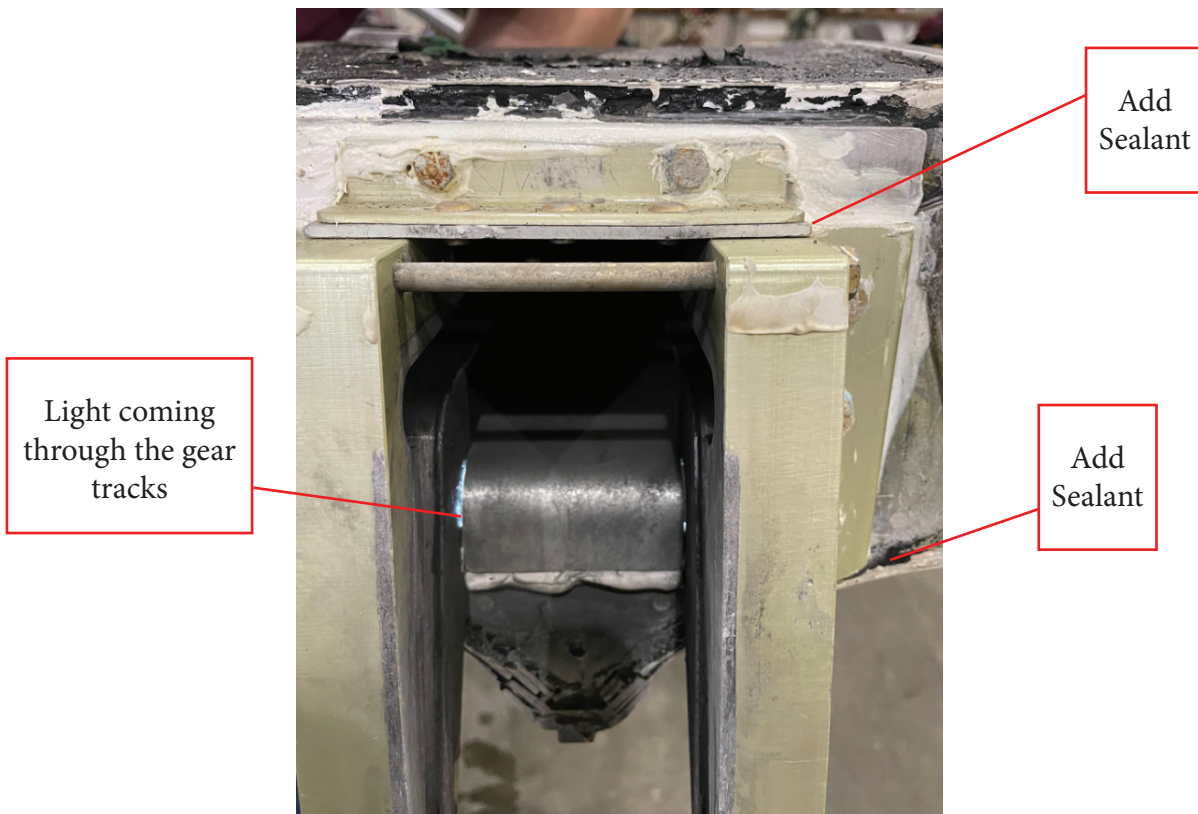


Figure 1: Nose Box with missing sealant around attachment flange

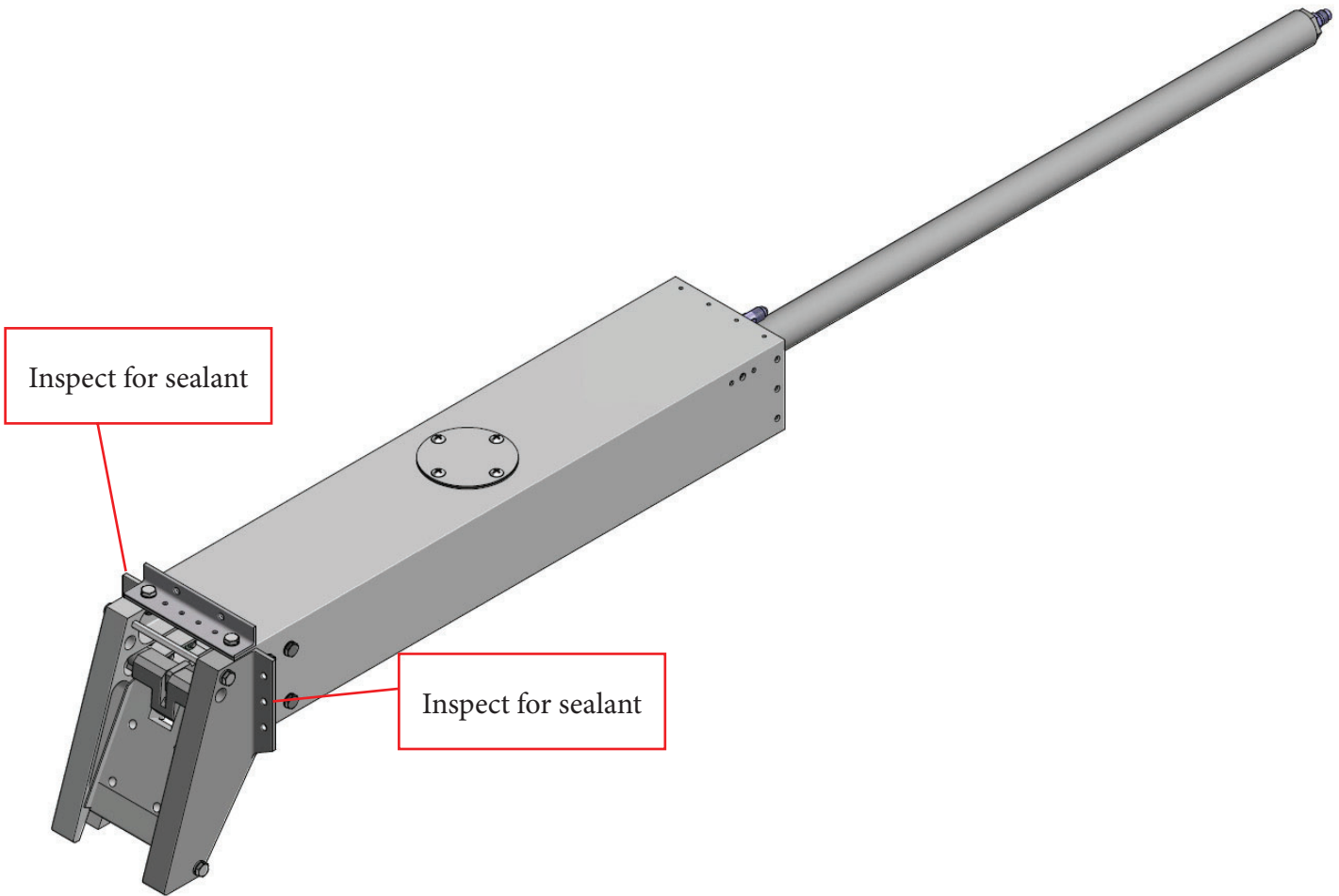


Figure 2: Gear Track Attach Locations

3. For future inspections of proper sealant around the nose box and the entire hull, see "Float Hull Maintenance" section in the Service Manual found on the Wipaire website.

Aircraft Closing & Return to Service

1. Upon completion of inspection, enter information in Aircraft Logbook for completion of Wipaire Service Letter 224.