



WIPLINE FLOATS • SKIS • MODIFICATIONS • AIRCRAFT SALES
AVIONICS • INTERIOR • MAINTENANCE • PAINT REFINISHING

SERVICE LETTER 216

Cessna 208 Caravan 8000A & 8750A Hydraulic Pump Replacement

Aircraft Makes/Model(s):	Float Model(s):	Compliance: Optional	By: MAB
Textron Aviation 208	8000A & 8750A	Part Number: 1011602	Approved: SDW
		Date: 5/7/2021	Revision: A

LOG OF REVISIONS

Revision	Description	Date
A	Initial release	5/7/2021

FAA approval has been obtained for technical data in this publication that affects STC or TSO design compliance.

EFFECTIVITY:

This service letter applies to Textron Aviation model 208 with Wipline 8000 Amphibian Floats and Wipline 8750 Amphibian Floats installed per STC SA1311GL.

COMPLIANCE:

Optional compliance

BACKGROUND:

Hydraulic Pump Assembly p/n 8A09000-031 has been discontinued. This service letter provides the option to replace it with a new pump p/n 1011404.

COMPLIANCE METHOD:

Install provided parts as shown in the Work Instruction section of this service letter.

APPROXIMATE SHOP HOURS:

The work instruction for this service letter will take approximately 8 labor hours.

WEIGHT AND BALANCE CHANGE:

+3.03 lbs, F.S. 286.23

WARRANTY INFORMATION:

This service letter does not include warranty for labor and parts.

TECHNICAL DATA:

Copies of this service letter, associated service kit (if applicable), float service manual, and float parts manual are available at www.wipaire.com.

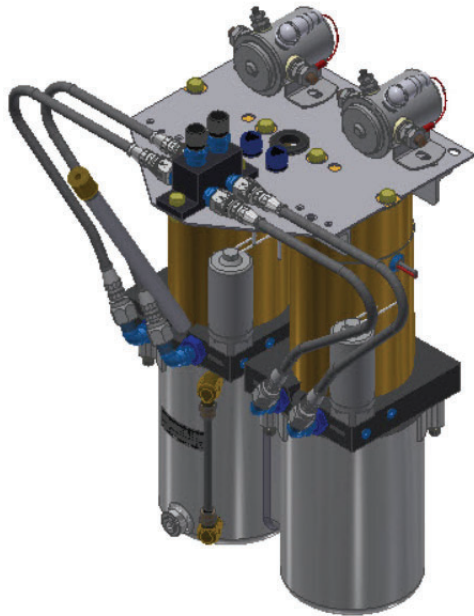
1700 Henry Ave - Fleming Field (KSGS), South St. Paul, MN 55075

Phone: 651.451.1205 | Fax: 651.457.7858

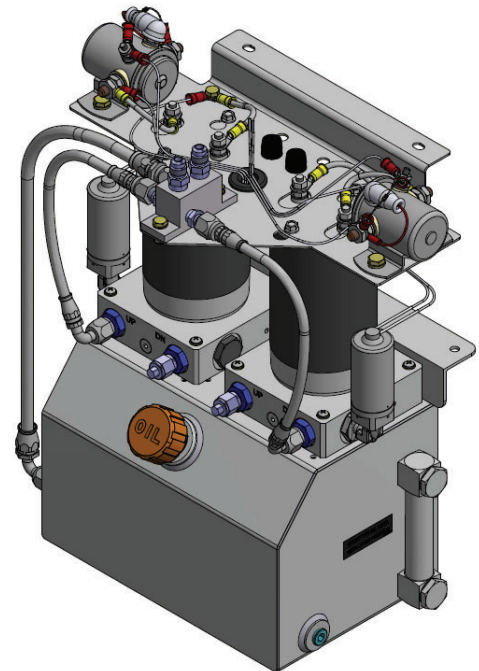
www.wipaire.com

ITEMS PROVIDED IN SERVICE KIT 1011602-01

ITEM	QTY	PART NUMBER	DESCRIPTION
1	1	1011404	Assembly, Hydraulic Power Pack
2	2	320559	Crimp Terminal, Butt, 22-16 AWG



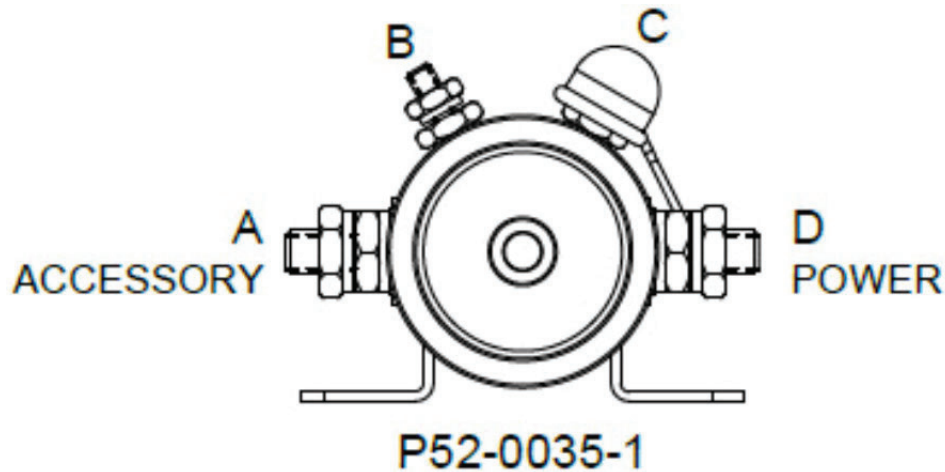
DISCONTINUED
HYDRAULIC PUMP 8A09000-031



NEW
HYDRAULIC PUMP 1011404

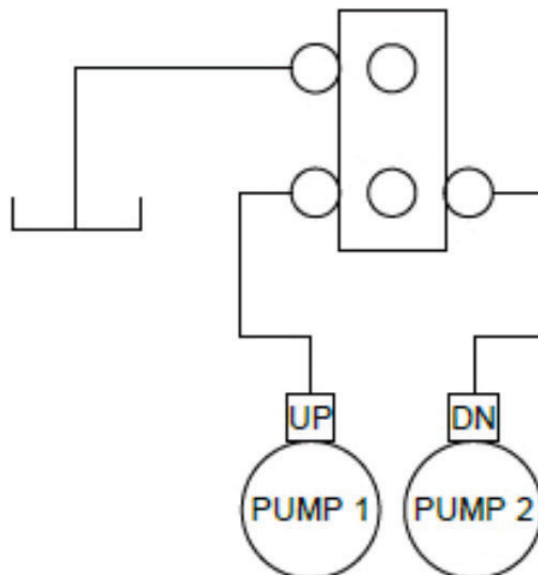
Work Instruction

1. Pull Pump 1 and Pump 2 circuit breakers.
2. Remove and cap both pressure and return hydraulic lines on hydraulic pump manifold 6A09000-027.
3. Remove GA1 and GA4 wires (12 ga) from electrical solenoids on hydraulic power pack 8A09000-031.



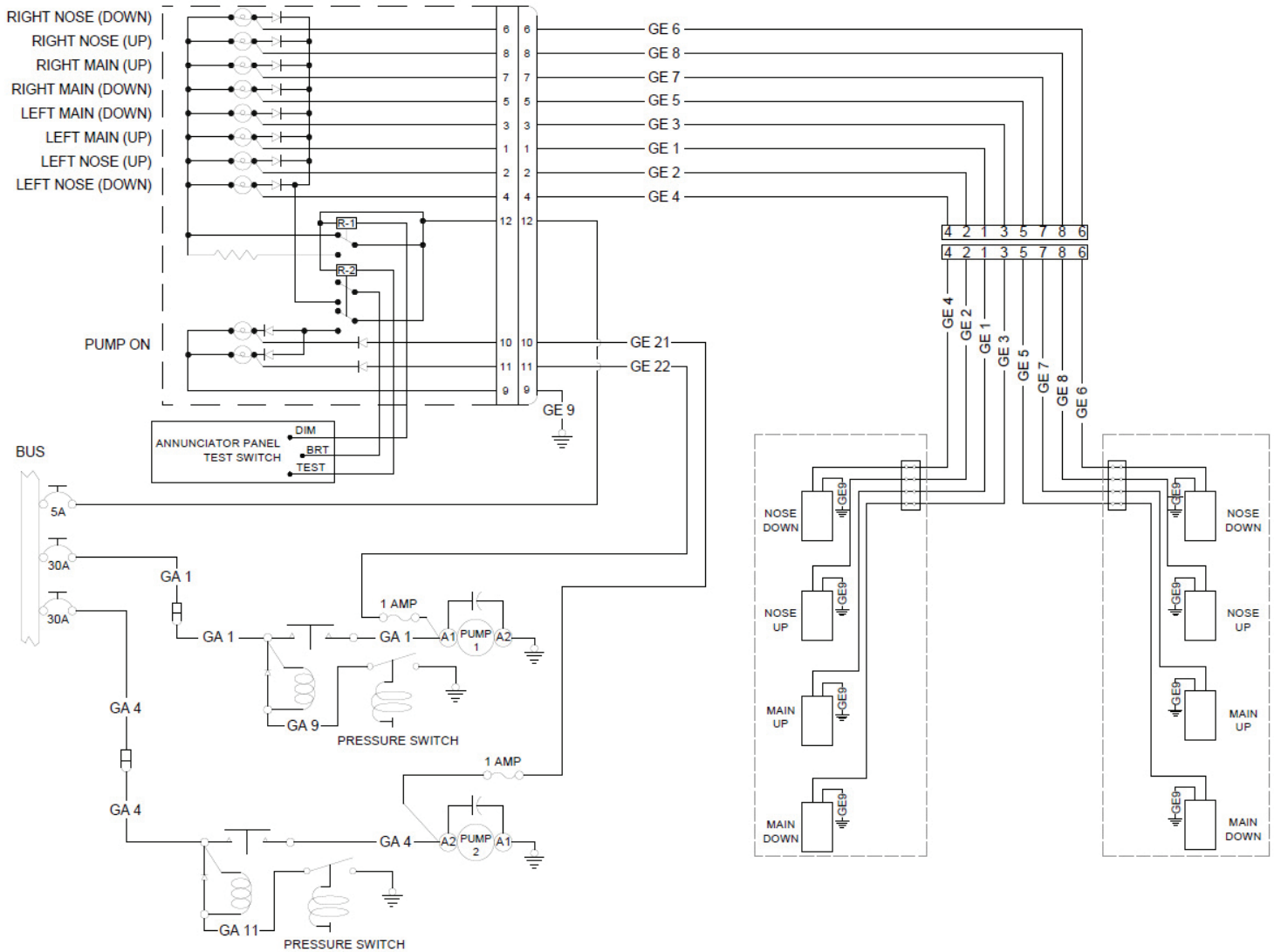
SOLENOID SCHEMATIC

4. Cut GE10 and GE11 wires (20 ga) at butt splice connection. If aircraft has G1000 avionics, cut GE21 and GE22 (20 ga) wires.
5. Unbolt and remove hydraulic power pack 8A09000-031 from pump mount assembly.
6. Install new hydraulic power pack 1011404 onto pump mount assembly using existing hardware.
7. Install pressure and return line to hydraulic pump manifold. Refer to hydraulic schematic.



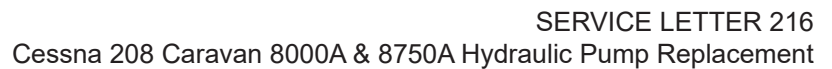
HYDRAULIC SCHEMATIC

8. Re-install GE10 and GE11 wires (20 ga), or GE21 and GE22 for G1000 equip aircraft, onto wires coming from fuse holder with supplied butt splice connectors. See electrical schematic.



ELECTRICAL SCHEMATIC (G1000 EQUIPPED AIRCRAFT)

9. Re-install GA1 and GA4 wires (12 ga) onto electrical solenoids on hydraulic power pack 1011404. See electrical schematic.



- ## Aircraft Closing & Return to Service

- P/N 1011602