



WIPLINE FLOATS • SKIS • MODIFICATIONS • AIRCRAFT SALES
AVIONICS • INTERIOR • MAINTENANCE • PAINT REFINISHING

SERVICE LETTER 33

CONVERSION OF MODEL 6000 TO MODEL 6100 FLOAT

Aircraft Makes/Model(s):	Float Model(s):	Compliance: Recommended	By: MAS
DHC-2 MK III	6000	Part Number: 1002411	Approved: SDW
		Date: 5/18/2022	Revision: E

LOG OF REVISIONS

Revision	Description	Date
A	Initial release	9/15/1994
B	Updated background, kit, work instructions, and images	11/25/2019
C	Added placard to kit	1/20/2020
D	Updated approximate shop hours.	3/24/2022
E	Added Kit 1002411-02.	5/18/2022

FAA approval has been obtained for technical data in this publication that affects STC or TSO design compliance.

EFFECTIVITY:

This service letter applies to all model 6000 floats installed on DeHavilland DHC-2 Mk III with 6000 lb. gross weight increase.

COMPLIANCE:

Before further flight for operations at 6000 lbs.

At owner's discretion for operations at 5370 lbs and 5600 lbs.

BACKGROUND:

During the certification of a similar aircraft at a similar weight, it was found that it would NOT pass the FAR 23.751/ CAR 3.371 flooded compartment test. Since the certification of the 6000 pound gross Mk III Beaver on the Wipline 6000 float was done in Canada by other than Wipaire, it is assumed that this particular test was not accomplished at the high weight. We also seriously doubt that the aircraft will pass the same test on float models other than Wipline.

For the same similar aircraft, the oleo strut was also modified to lessen landing reaction load factors, thereby lowering stresses in the landing gear and adjacent structure. Incorporation of this oleo will eliminate the landing weight restrictions for land landings on the Viking modified aircraft, provided Viking changes their flight manual appropriately.

After modification, the mechanic must return the removed 6000 dataplates to Wipaire Customer Service. New plates will be issued upon receipt.

COMPLIANCE METHOD:

Perform repairs per the Work Instruction section of this service letter.

APPROXIMATE SHOP HOURS:

Performing the work in this service letter will take approximately 35 labor hours.

WARRANTY INFORMATION:

Not applicable. Warranty has expired.

1700 Henry Ave - Fleming Field (KSGS), South St. Paul, MN 55075

Phone: 651.451.1205 | Fax: 651.457.7858

www.wipaire.com



TECHNICAL DATA:

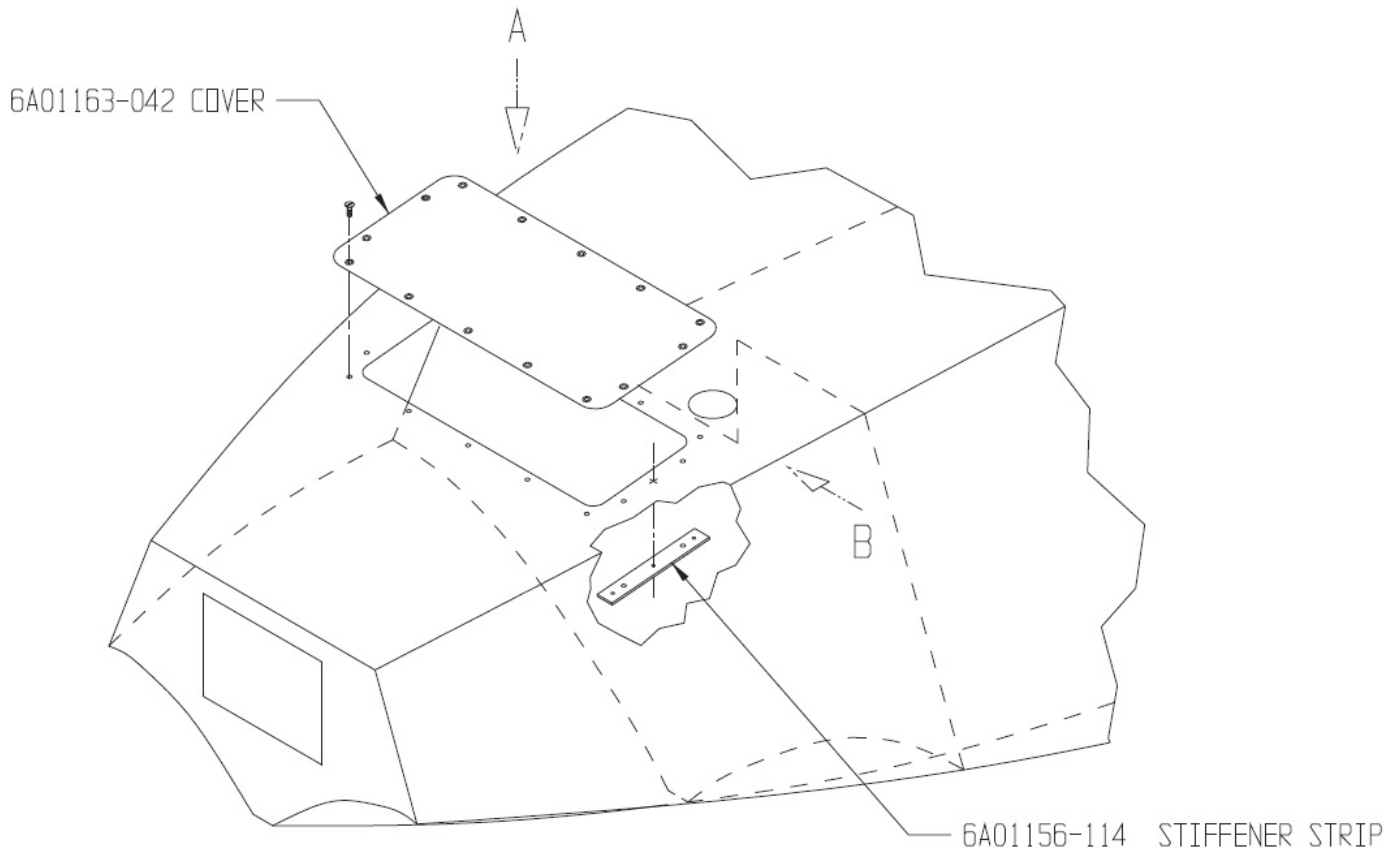
Copies of this service letter, associated service kit (if applicable), float service manual, and float parts manual are available by contacting Wipaire customer service.

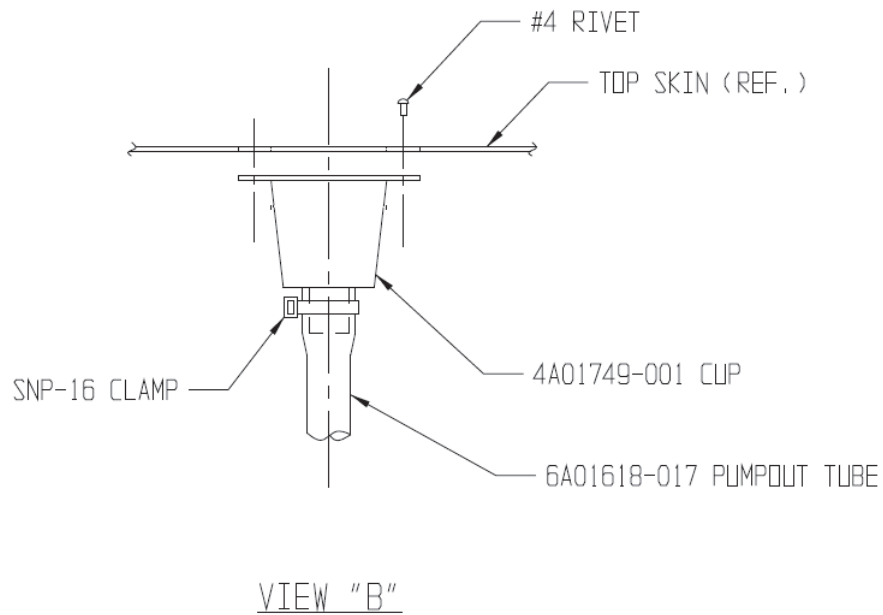
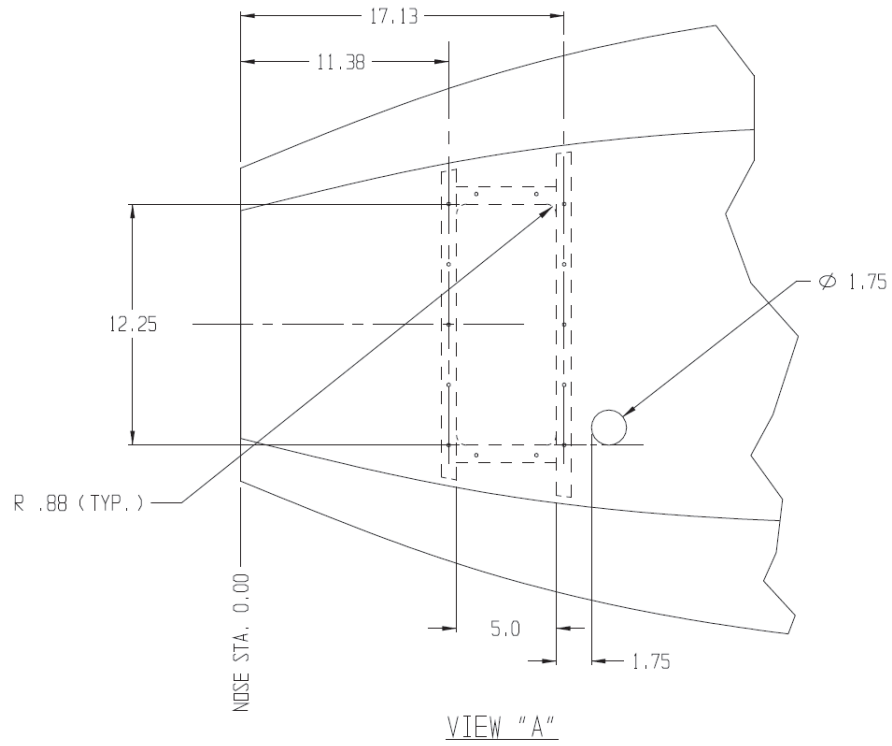
ITEMS PROVIDED IN SERVICE KIT 1002411-01 (AMPHIBIAN FLOATS ONLY)			
ITEM	QTY	PART NUMBER	DESCRIPTION
1	16	NAS1103-2	BOLT
2	2	57134	CLAMP, PLASTIC, WHITE, 3/4" DIA
3	2	3A01158-003	CLAMP, PUMP OUT TUBE
4	2	6A01163-042	COVER FORWARD ASSY
5	2	6P01158-157	COVER-#3 BULKHEAD COVER OPENING
6	4	6A01156-114	DOUBLER COVER
7	16	MS35333-39	LOCKWASHER, INTERNAL TOOTH, TO FIT DIA #10
8	2	MS28775-234	O RING , DIA 2.984
9	2	MS28775-116	O RING, DIA 0.737
10	2	MS28775-334	O RING, DIA 2.6
11	2	MS28775-231	O RING, DIA 2.609
12	4	MS28775-336	O RING, DIA 2.855
13	2	6P04261-007	PIN - METERING
14	2	4A01749-001	PUMP-OUT CUP
15	2	6S01618-009	PUMP-OUT TUBE
16	28	8 X 3/4	SCREW, #8X3/4" PHILLIPS TYPE A FLAT HEAD 82 DEGREE
17	2	2111	STOPPER, PUMP OUT
18	16	1002481	TINNERMAN, WITH TAPE
19	16	NAS1149D0316J	WASHER, ALUMINUM
20	2	6A04743-001	WIPER-SHOCK STRUT
21	2	8A3-5086	PLACARD, HYDRAULIC CYLINDER

ITEMS PROVIDED IN SERVICE KIT 1002411-02 (STRAIGHT FLOATS ONLY)			
ITEM	QTY	PART NUMBER	DESCRIPTION
1	2	57134	CLAMP, PLASTIC, WHITE, 3/4" DIA
2	2	3A01158-003	CLAMP, PUMP OUT TUBE
3	2	6A01163-042	COVER FORWARD ASSY
4	2	6P01158-157	COVER-#3 BULKHEAD COVER OPENING
5	4	6A01156-114	DOUBLER COVER
6	2	4A01749-001	PUMP-OUT CUP
7	2	6S01618-009	PUMP-OUT TUBE
8	28	8 X 3/4	SCREW, #8X3/4" PHILLIPS TYPE A FLAT HEAD 82 DEGREE
9	2	2111	STOPPER, PUMP OUT
10	16	1002481	TINNERMAN, WITH TAPE
11	16	NAS1149D0316J	WASHER, ALUMINUM

WORK INSTRUCTION

1. Drill out all rivets in top skin angles approximately 11.375 and 17.125 aft face of nose bulkhead.
2. Center template on top skin centerline.
3. Layout 5" X 12.25" hole on top skin and cut out between stiffeners.
4. Match drill #10 holes from template thru top skin and top skin angles for cover attach holes, #30 holes for nutplate attach.
5. Countersink all remaining holes in top skin and install AN426AD4 rivets.
6. Install 6A01156-114 strip under skin before installing 9A3-671 nutplates.
7. Locate 1.75 pump-out cup hole from template and install 3A01650-002 cup, 3A01650-002 ring. Rivet to topskin.
8. Install 3A01158-003 clamp on FWD side of #3 bulkhead, approximately 3" up from keel.
9. Install pump-out tube (20.5"). Secure top of tube to pump-out cup with SNP-16 clamp.
10. Install 9A3-671 nutplates and insulators to inside of top skin angles with AN426AD4 rivets.
11. Seal completely around #3 bulkhead. Water check after sealing.
12. If amphibious float, seal around nose box at #3 bulkhead. If seaplane float, install 6P01158-157 cover over nose box hole in #3 bulkhead. Match drill and secure with AN470AD4 rivets.
13. Apply caulking around cut-out and attach 6A01163-042 cover with #8 X 3/4" screws.
14. Amphibian floats, rework existing model 6000 shock struts with parts provided in kit while referencing current 6100 IPC and Service Manual.
15. Shock struts may be replaced with new P/N 1002068 at customer's expense.





AIRCRAFT CLOSING AND RETURN TO SERVICE

1. Upon completion of inspection, enter information in Aircraft Logbook for completion of this Wipaire Service Letter.