



WIPLINE FLOATS • SKIS • MODIFICATIONS • AIRCRAFT SALES
AVIONICS • INTERIOR • MAINTENANCE • PAINT REFINISHING

STRUCTURAL REPAIR MANUAL FOR WIPLINE ALUMINUM FLOATS

Revision E

THIS PAGE INTENTIONALLY LEFT BLANK

LOG OF REVISIONS

Revision	Pages Affected	Description	Date
IR	All	Initial Release	9/18/2014
A	67	Added bulkhead repair.	11/10/2015
B	20-22, 63-65, 73	Added keel repair data, 10000 strut fitting bushing repair and bulkhead buckling and cracking information.	1/15/2016
C	51, 63, 65	Updated instructions on Main and Front Strut Fitting Repair. Removed drawing 1008698 and changed to intentionally blank page. Updated instructions on Complex Extrusion Splice Repair.	5/9/2019
D	All	Updated manual format in new software. Updated Section 2.0 to Corrosion Removal and Material Loss. Changed Table 2-1 to Material Loss Limits. Changed float sealant 892 BR to PR-1422 or equivalent. Updated Figure 5.10-7: 13000 Main Keel Repair with .063 Skin Thickness and added Main Keel part number 13S01387-004 for straight floats. Added part number 13S01387-004 and changed Screw AN507C832-8 to MS24693-C50 and Washer AN960-8 to NAS1149F0832P and Nut AN365-832 to MS20365-832 in section 5.10.2 Main Keel Extrusion Splice Repair. Added 1001073 Keel Extrusion Repair, Aft to multiple sections. Updated drawing and added Splice Main Keel Repair p/n 8A01354-008 (21"), 8A01354-009 (32"), 8A01354-010 (43"), 8A01354-011 (57") to multiple sections. Removed 6000 and 8000 Complex Extrusion Replacement Parts tables and added Typical Cap Splice to Keel repair drawings and instructions. Updated drawing in Figure 5.9-2 for Aft Keel Repair. Updated Figure 5.9-4 Fwd Chine Repair. Updated drawing for Figure 5.9-3 Gunwall Repair. Updated drawing for Figure 5.9-5 Aft Chine Repair. Changed drawings in Figure 5.9-6, 5.9-7, 5.10-6, and 5.10-7 for Main Keel Simple Extrusion Splice Repair for 10000 and 13000 floats. Added 1006762 Keel Splice to Sections 5.9.1 and 5.10.1. Updated drawing for Figure 5.10-2 Aft Keel Repair. Updated drawing for Figure 5.10-3 Gunwall Repair. Updated drawing for Figure 5.10-4 Fwd Chine Repair. Updated drawing for Figure 5.10-5 Aft Chine Repair.	6/19/2020
E	9, 20	Added note in introduction about NDT. Added information about raw materials in Section 5.0.	6/10/2021

THIS PAGE INTENTIONALLY LEFT BLANK

TABLE OF CONTENTS

INTRODUCTION	9
1.0 HARD LANDING AND DAMAGE INVESTIGATION.....	10
2.0 CORROSION REMOVAL AND MATERIAL LOSS.....	10
3.0 RIVET REPLACEMENT	11
4.0 FLOAT HULL SHEET METAL	12
4.1 FLOAT SKIN DAMAGE REPAIR (ALL MODELS)	12
4.2 WIPLINE MODEL 10000 & 13000 OPTIONAL ACCESS HOLE REPAIR	14
4.3 WIPLINE SKIN AND BULKHEAD THICKNESSES	15
4.4 WIPLINE MODELS 3730/3900/4000/6000/6100/8000 SKIN TO KEEL REPAIR	17
5.0 FLOAT HULL EXTRUSIONS	20
5.1 2100/2350 FLOAT EXTRUSION REPAIRS	21
5.1.1 SIMPLE EXTRUSION SPLICE REPAIR.....	21
5.2 3000/3450 FLOAT EXTRUSION REPAIRS	24
5.2.1 SIMPLE EXTRUSION SPLICE REPAIR.....	24
5.2.2 MAIN KEEL EXTRUSION SPLICE REPAIR	27
5.3 3730/3900 FLOAT EXTRUSION REPAIRS	29
5.3.1 SIMPLE EXTRUSION SPLICE REPAIR.....	29
5.3.2 COMPLEX EXTRUSION SPLICE REPAIR	30
5.4 4000 FLOAT EXTRUSION REPAIRS	32
5.4.1 SIMPLE EXTRUSION SPLICE REPAIR.....	32
5.4.2 COMPLEX EXTRUSION SPLICE REPAIR	33
5.5 6000 FLOAT EXTRUSION REPAIRS	35
5.5.1 SIMPLE EXTRUSION SPLICE REPAIR.....	35
5.5.2 COMPLEX EXTRUSION SPLICE REPAIR	36
5.6 7000 FLOAT EXTRUSION REPAIRS	38
5.6.1 SIMPLE EXTRUSION SPLICE REPAIR.....	38
5.6.2 MAIN KEEL EXTRUSION SPLICE REPAIR	40
5.7 8000 FLOAT EXTRUSION REPAIRS	41
5.7.1 SIMPLE EXTRUSION SPLICE REPAIR.....	41
5.7.2 COMPLEX EXTRUSION SPLICE REPAIR	43
5.8 8750 FLOAT EXTRUSION REPAIRS	44
5.8.1 SIMPLE EXTRUSION SPLICE REPAIR.....	44
5.8.2 MAIN KEEL EXTRUSION SPLICE REPAIR	47
5.9 10000 FLOAT EXTRUSION REPAIRS	48
5.9.1 SIMPLE EXTRUSION SPLICE REPAIR.....	48
5.9.2 MAIN KEEL EXTRUSION SPLICE REPAIR	51
5.9.3 MAIN AND FRONT STRUT FITTING REPAIR.....	53
5.10 13000 FLOAT EXTRUSION REPAIRS	54
5.10.1 SIMPLE EXTRUSION SPLICE REPAIR.....	54
5.10.2 MAIN KEEL EXTRUSION SPLICE REPAIR	57
6.0 FLOAT HULL BULKHEADS	59
6.1 COMPLETE BULKHEAD REPLACEMENT	59
6.2 PARTIAL BULKHEAD REPLACEMENT	59
6.3 BULKHEAD REINFORCEMENT	60
6.4 BULKHEAD REPAIR	60
6.5 BULKHEAD BUCKLING AND CRACKING	60
6.5.1 BULKHEAD BUCKLING	60
6.5.2 BULKHEAD CRACKING.....	60

FIGURES

FIGURE 4-1A: SHEET METAL REPAIR	12
FIGURE 4-1B: SHEET METAL REPAIR	13
FIGURE 4-1C: SHEET METAL REPAIR.....	13
FIGURE 4-2: BULKHEAD ACCESS HOLE REPAIR	14
FIGURE 4.4A: MODEL 3730/3900/4000/6000/6100/8000 TYPICAL REPAIR BOTTOM SKIN TO KEEL INSTRUCTION ..	18
FIGURE 4.4B: MODEL 3730/3900/4000/6000/6100/8000 TYPICAL REPAIR BOTTOM SKIN TO KEEL INSTRUCTION ..	19
FIGURE 4.4C: MODEL 3730/3900/4000/6000/6100/8000 TYPICAL REPAIR BOTTOM SKIN TO KEEL INSTRUCTION (ALTERNATE METHOD).....	20
FIGURE 5.1-1: SIMPLE EXTRUSION SPLICE REPAIR	21
FIGURE 5.1-2: 2100/2350 MAIN KEEL REPAIR	22
FIGURE 5.1-3: 2100/2350 ALTERNATE MAIN KEEL REPAIR	22
FIGURE 5.1-4: 2100/2350 AFT KEEL REPAIR.....	23
FIGURE 5.1-5: 2100/2350 GUNWALL REPAIR.....	23
FIGURE 5.2-1: SIMPLE EXTRUSION SPLICE REPAIR	24
FIGURE 5.2-2: 3000/3450 AFT KEEL REPAIR	25
FIGURE 5.2-3: 3000/3450 GUNWALL REPAIR.....	25
FIGURE 5.2-4: 3000/3450 FWD CHINE REPAIR.....	26
FIGURE 5.2-4: 3000/3450 FWD CHINE REPAIR.....	26
FIGURE 5.2-5: 3000/3450 AFT CHINE REPAIR	27
FIGURE 5.2-6: MAIN KEEL SIMPLE EXTRUSION SPLICE REPAIR	28
FIGURE 5.2-7: 3000/3450 MAIN KEEL REPAIR.....	28
FIGURE 5.3-1: SIMPLE EXTRUSION SPLICE REPAIR	29
FIGURE 5.3-2: 3730/3900 AFT KEEL REPAIR.....	30
FIGURE 5.3-3: COMPLEX EXTRUSION SPLICE REPAIR.....	31
FIGURE 5.4-1: SIMPLE EXTRUSION SPLICE REPAIR	32
FIGURE 5.4-2: 4000 AFT KEEL REPAIR.....	33
FIGURE 5.4-3: COMPLEX EXTRUSION SPLICE REPAIR.....	34
FIGURE 5.5-1: SIMPLE EXTRUSION SPLICE REPAIR	35
FIGURE 5.5-2: 6000 AFT KEEL REPAIR.....	36
FIGURE 5.5-3: COMPLEX EXTRUSION SPLICE REPAIR.....	37
FIGURE 5.6-1: SIMPLE EXTRUSION SPLICE REPAIR	38
FIGURE 5.6-2: 7000 FWD CHINE REPAIR.....	39
FIGURE 5.6-3: 7000 AFT KEEL REPAIR.....	39
FIGURE 5.6-4: 7000 AFT CHINE REPAIR	39
FIGURE 5.6-5: MAIN KEEL SIMPLE EXTRUSION SPLICE REPAIR	40
FIGURE 5.6-6: 7000 MAIN KEEL REPAIR.....	41
FIGURE 5.7-1: SIMPLE EXTRUSION SPLICE REPAIR	42
FIGURE 5.7-2: 8000 AFT KEEL REPAIR	42
FIGURE 5.7-3: COMPLEX EXTRUSION SPLICE REPAIR.....	43
FIGURE 5.8-1: SIMPLE EXTRUSION SPLICE REPAIR	45
FIGURE 5.8-2: 8750 AFT KEEL REPAIR	45
FIGURE 5.8-3: 8750 FWD CHINE REPAIR.....	46
FIGURE 5.8-4: 8750 AFT CHINE REPAIR	46
FIGURE 5.8-5: MAIN KEEL SIMPLE EXTRUSION SPLICE REPAIR	47
FIGURE 5.8-6: 8750 MAIN KEEL REPAIR	48
FIGURE 5.9-1: SIMPLE EXTRUSION SPLICE REPAIR	49
FIGURE 5.9-2: 10000 AFT KEEL REPAIR	49

FIGURES CONTINUED

FIGURE 5.9-3: 10000 GUNWALL REPAIR.....	50
FIGURE 5.9-4: 10000 FWD CHINE REPAIR	50
FIGURE 5.9-5: 10000 AFT CHINE REPAIR	51
FIGURE 5.9-6: MAIN KEEL SIMPLE EXTRUSION SPLICE REPAIR	52
FIGURE 5.9-7: 10000 MAIN KEEL REPAIR	52
FIGURE 5.9-8: 10000 STRUT REPAIR FITTING 13A01085-001	53
FIGURE 5.9-9: 10000 STRUT REPAIR FITTING 13A01161-002	54
FIGURE 5.10-1: SIMPLE EXTRUSION SPLICE REPAIR	55
FIGURE 5.10-2: 13000 AFT KEEL REPAIR.....	55
FIGURE 5.10-3: 13000 GUNWALL REPAIR.....	56
FIGURE 5.10-4: 13000 FWD CHINE REPAIR	56
FIGURE 5.10-5: 13000 AFT CHINE REPAIR	57
FIGURE 5.10-6: MAIN KEEL SIMPLE EXTRUSION SPLICE REPAIR	58
FIGURE 5.10-7: 13000 MAIN KEEL REPAIR.....	58

TABLES

TABLE 2-1: CORROSION LIMITS (MATERIAL LOSS LIMITS)	11
TABLE 4-1: SHEET METAL ALUMINUM MATERIAL/THICKNESS	15
TABLE 4-1: SHEET METAL ALUMINUM MATERIAL/THICKNESS	16
TABLE 4-1: SHEET METAL ALUMINUM MATERIAL/THICKNESS	17
TABLE 5.3-1 3730/3900 COMPLEX EXTRUSION REPLACEMENT PARTS	31
TABLE 5.4-1: 4000 COMPLEX EXTRUSION REPLACEMENT PARTS	34
TABLE 5.5-1: 6000 COMPLEX EXTRUSION REPLACEMENT PARTS	37
TABLE 5.7-1: 8000 COMPLEX EXTRUSION REPLACEMENT PARTS	44

INTRODUCTION

This manual describes standard repairs for Wipline aluminum floats. Contact Wipaire for repairs not covered by this manual.

Note: Nondestructive testing (NDT) is optional for all repairs.

This manual is revised periodically and needs to be kept updated. Updates are available at www.wipaire.com at no charge.

The service products referred to throughout this manual are described by their trade name and may be purchased from the factory Parts Department.

To contact Wipaire for repair assistance or parts sales, call or write:

Wipaire Customer Service
Telephone: (651) 451-1205 or 1 (888) 947-2473
Fax: (651) 306-0666
Email: customerservice@wipaire.com

1.0 HARD LANDING AND DAMAGE INVESTIGATION

After a thorough cleaning of the suspected damaged area, all parts should be carefully examined to determine the extent of the damage. Frequently, the force causing the initial damage is transmitted from one member to the next, causing strains and distortions.

Abnormal stresses incurred by shock or impact forces on a rib, bulkhead, or similar structure may be transmitted to the extremity of the structural member. These stresses may result in secondary damage, such as sheared or stretched rivets, elongated bolt holes, or damaged skins or bulkheads.

Points of attachment should be examined carefully for distortion, and the security of fasteners in the primary and secondary damaged areas at locations beyond the local damage. Inspect aircraft tubes in the areas of float fitting attachment for signs of bending, cracked welds, or other signs of damage.

2.0 CORROSION REMOVAL AND MATERIAL LOSS

Floats may experience material loss due to chaffing, fretting, or other accidental damage. Refer to Table 2-1 for allowable material loss. If damage exceeds listed limits, replace damaged parts.

To prevent and detect corrosion follow the procedures outlined in the appropriate float service manual. Corrosion appears as a white or pale green powder, discoloration of a metal surface, or bubbles and blisters under the surface of the paint.

If the corrosion does not exceed the corrosion limits listed in Table 2-1, the corrosion can be removed. Thoroughly clean the affected area. Remove light corrosion (discoloration, minimal pitting) with gentle sanding or washing with a chromic acid solution. Remove moderate and severe corrosion (blistering, flaking, pitting) with heavier sanding and grinding.

After removing the corrosion, restore the area to the original finish. Typically, this is either priming and enameling, or coating bare metal with waterproof grease. Apply CorrosionX or an equivalent to the affected area to stop corrosion and repel moisture and contaminants.

If the corrosion exceeds the corrosion limits listed in Table 2-1, refer to section 4.0 of this manual for typical reinforcement or replacement of the affected areas. Contact Wipaire Customer Service with questions.

AREA	ALLOWABLE MATERIAL LOSS
Bottom Skins	30%
Side Skins (forward of step)	30%
Side Skins (aft of step)	20%
Top Skins	30%
Machinings	0.015"
Extrusions	0.015"
Struts and Spreader Bars	0.030"

NOTES:

1. Maximum surface area for skin corrosion, up to the maximum depth, shall not exceed one square inch and must be separated by at least 14 inches from any other skin corrosion damage.
2. For machined fittings, struts, spreader bars, and pylons, corrosion limits are provided as maximum pitting depths. Corroded surface area shall not exceed 0.5 square inches and must be separated by at least 5 inches from any other corrosion damage.

TABLE 2-1: CORROSION LIMITS (MATERIAL LOSS LIMITS)**3.0 RIVET REPLACEMENT**

There are instances during float repair where replacement of solid rivets is not practical. For these occasions, Wipaire has composed a list of acceptable fastener substitutions.

Solid rivets may be replaced by the following fasteners with equal or greater diameter than the original rivet:

1. New solid rivet
2. CherryMAX blind rivet
3. HuckLok blind rivet
4. Hi-Lok fastener

NOTES:

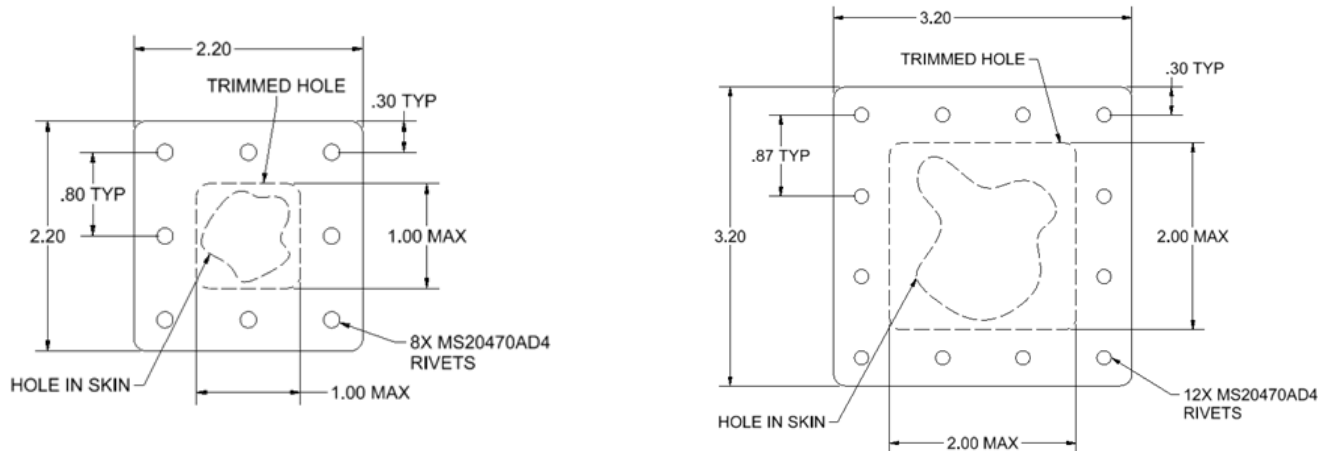
1. When installing any structural fasteners, edge distance and rivet spacing guidelines per AC 43.13-1B should be followed at all times.
2. In areas where solid rivets are smoking or missing, blind rivets are an acceptable short-term solution but should be replaced with solid rivets or Hi-Lok fasteners.
3. Follow fastener manufacturer guidelines for installation.

4.0 FLOAT HULL SHEET METAL

Damage to any sheet metal, including but not limited to skins and bulkheads, may be repaired per the figures in this section, or any acceptable repair method listed in FAA Advisory Circular 43.13-1B.

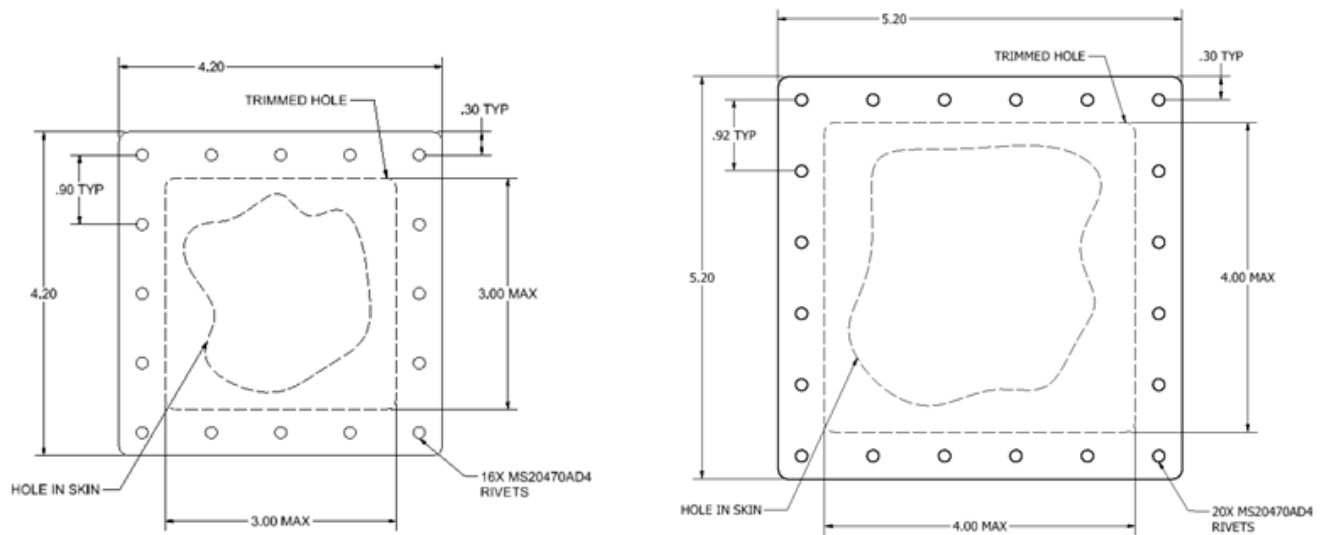
Float hull sheet metal or part thereof can be purchased from Wipaire. To simplify repairs, the sheet metal can be ordered precut and predrilled. Contact Wipaire Customer Service to order parts.

4.1 FLOAT SKIN DAMAGE REPAIR (ALL MODELS)



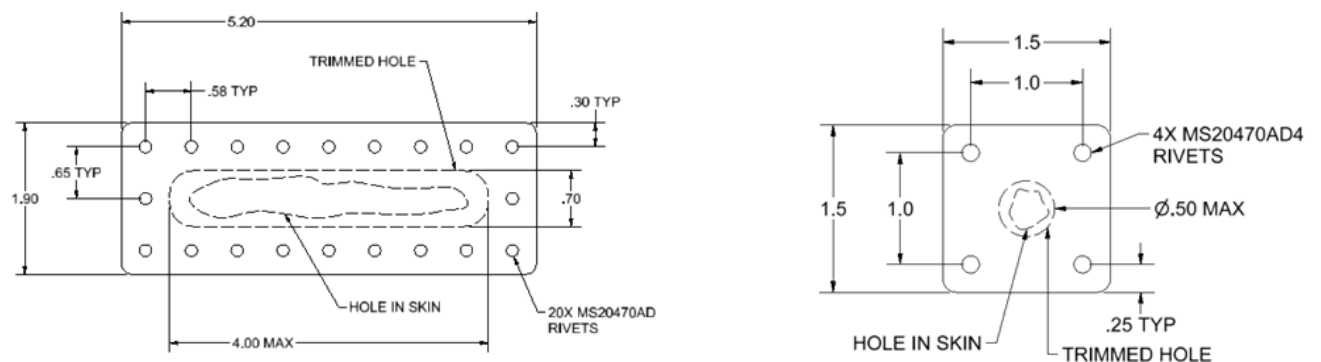
1. Trim hole as shown by dotted line
2. Patch to be same material with equal or greater thickness than original skin (See Table 4-1)
3. Prime all bare surfaces
4. Seal between patch and skin
5. Rivet in place

FIGURE 4-1A: SHEET METAL REPAIR



1. Trim hole as shown by dotted line
2. Patch to be same material with equal or greater thickness than original skin (See Table 4-1)
3. Prime all bare surfaces
4. Seal between patch and skin
5. Rivet in place

FIGURE 4-1B: SHEET METAL REPAIR



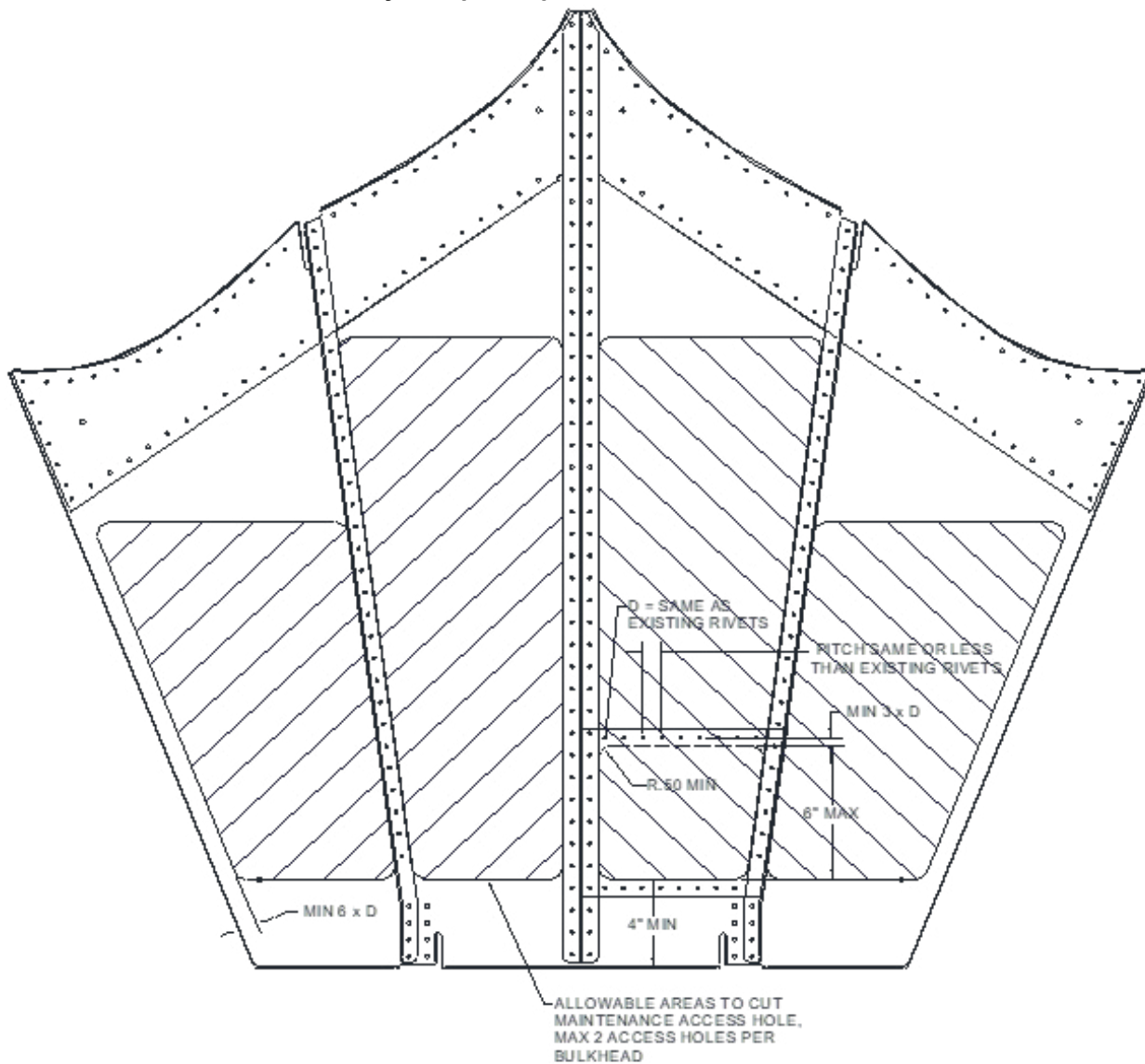
1. Trim hole as shown by dotted line
2. Patch to be same material with equal or greater thickness than original skin (See Table 4.1)
3. Prime all bare surfaces
4. Seal between patch and skin
5. Rivet in place

FIGURE 4-1C: SHEET METAL REPAIR

4.2 WIPLINE MODEL 10000 & 13000 OPTIONAL ACCESS HOLE REPAIR

During extensive float maintenance of 10000 and 13000 floats, it may be desirable to cut an access hole in a solid bulkhead to enable replacement of neighboring float structure. This type of access hole can be cut and then repaired according to Figure 4-2.

Note that this is only acceptable practice on the 10000 and 13000 floats.



NOTE(S):

1. ACCESS HOLES MAY BE CUT FOR THE PURPOSE OF MAINTENANCE
2. MAX 2 ACCESS HOLES PER BULKHEAD
3. RIVET PATCH OVER ACCESS HOLE ONCE MAINTENANCE IS COMPLETE
4. PATCH MUST BE OF THE SAME, OR STRONGER ALLOY (6061-T6 OR 2024-T3), WITH THE SAME THICKNESS AS THE ORIGINAL PANEL, OR ONE GAGE THICKNESS GREATER
5. USE SOLID RIVETS OF SAME DIAMETER AS EXISTING RIVETS, OR 1 SIZE LARGER; ALTERNATELY USE CHERRY MAX (OR EQUIVALENT) FASTENER OF SAME DIAMETER, OR 1 SIZE LARGER

KEY:
D = DIAMETER
R = RADIUS

FIGURE 4-2: BULKHEAD ACCESS HOLE REPAIR

4.3 WIPLINE SKIN AND BULKHEAD THICKNESSES

		FLOAT		
		2100/2300	3000/3450	3730/3900
Skins	Top	6061-T6 / .025"	6061-T6 / .025"	2024-T3 / .032"
	Side	6061-T6 / .025"	6061-T6 / .025"	2024-T3 / .032"
	Bottom	2024-T3 / .032"	6061-T6 / .040"	6061-T6 / .040"
	Afterbody	2024-T3 / .025"	6061-T6 / .025"	2024-T3 / .032"
Bulkheads	Nose	6061-T6 / .063"	6061-T6 / .080"	6061-T6 / .100"
	Forward (except nose)	6061-T6 / .032"	6061-T6 / .032"	2024-T3 / .032"
	Aft Wheel Well	6061-T6 / .032"	6061-T6 / .032"	2024-T3 / .050"
	Aft (except aft wheel well)	6061-T6 / .032"	6061-T6 / .032"	2024-T3 / .040"

Note: See appropriate parts manual at www.wipaire.com to identify damaged part(s)

		FLOAT		
		4000	6000/6100	8000
Skins	Top	6061-T6 / .032"	6061-T6 / .032"	6061-T6 / .032"
	Side	2024-T3 / .025"	6061-T6 / .032"	6061-T6 / .032"
	Bottom	6061-T6 / .040"	6061-T6 / .040"	6061-T6 / .040"
	Afterbody	2024-T3 / .025"	6061-T6 / .032"	6061-T6 / .032"
Bulkheads	Nose	6061-T6 / .100"	6061-T6 / .100"	6061-T6 / .100"
	Forward (except nose)	6061-T6 / .032"	6061-T6 / .032"	6061-T6 / .032"
	Aft Wheel Well	6061-T6 / .050"	6061-T6 / .050"	6061-T6 / .050"
	Aft (except aft wheel well)	6061-T6 / .032"	6061-T6 / .040"	6061-T6 / .040"

Note: See appropriate parts manual at www.wipaire.com to identify damaged part(s)

TABLE 4-1: SHEET METAL ALUMINUM MATERIAL/THICKNESS

(Continues on the next page)

		7000
Top Skins	All	6061-T6 / .050"
Side Skins	All	6061-T6 / .032"
Bottom Skins	Bulkhead 1-10 (main keel to sister keel)	6061-T6 / .063"
	Bulkhead 1-10 (sister keel to chine)	6061-T6 / .050"
	Bulkhead 10 -16	6061-T6 / .032"
Bulkheads	Bulkhead 1	6061-T6 / .100"
	Bulkheads 2-3	6061-T6 / .040"
	Bulkheads 4-10	6061-T6 / .025"
	Bulkhead 11 (aft wheel well)	6061-T6 / .040"
	Bulkheads 12-16	6061-T6 / .032"

Note: See appropriate parts manual at www.wipaire.com to identify damaged part(s)

		8750
Top Skins	All	6061-T6 / .050"
Side Skins	Forwardmost (inboard and outboard)	6061-T6 / .032"
	Wheel Well (outboard only)	2024-T3 / .050"
	All Remaining	2024-T3 / .032"
Bottom Skins	Bulkhead 1-10 (main keel to sister keel)	6061-T6 / .063"
	Bulkhead 1-10 (sister keel to chine)	6061-T6 / .050"
	Bulkhead 10 -19	6061-T6 / .032"
Bulkheads	Bulkhead 1	6061-T6 / .100"
	Bulkheads 2-3	6061-T6 / .040"
	Bulkheads 4-10	6061-T6 / .025"
	Bulkhead 11 (aft wheel well)	6061-T6 / .040"
	Bulkheads 12-19	6061-T6 / .032"

Note: See appropriate parts manual at www.wipaire.com to identify damaged part(s)

TABLE 4-1: SHEET METAL ALUMINUM MATERIAL/THICKNESS

(Continues on the next page)

		10000/13000
Top Skins	Forward and Aft	6061-T6 / .040"
	Center	6061-T6 / .063"
Side Skins	Forward and Aft	6061-T6 / .040"
	Center	6061-T6 / .063"
Bottom Skins	Bow to Wheel Well (main keel to sister keel)	6061-T6 / .063"
	Afterbody	6061-T6 / .032"
	All Remaining	6061-T6 / .050"
Bulkheads	Nose	6061-T6 / .100"
	Aft Wheel Well	6061-T6 / .063"
	All Remaining	6061-T6 / .040"

Note: See appropriate parts manual at www.wipaire.com to identify damaged part(s)

TABLE 4-1: SHEET METAL ALUMINUM MATERIAL/THICKNESS

4.4 WIPLINE MODELS 3730/3900/4000/6000/6100/8000 SKIN TO KEEL REPAIR

All outside hull skins are bonded to the extrusions with a special heat pressure 3M adhesive. This bond adheres skins to the inside of all extrusions.

Skins may be reattached to extrusions by methods shown in Figures 4-4A, 4-4B, 4-4C. If the skin bond must be broken from an extrusion for a long distance the caulking material must first be removed from the exterior crack. Then heat the extrusion with a propane torch until the bond starts to loosen. Caution must be taken not to heat and loosen bonds not needing replacement.

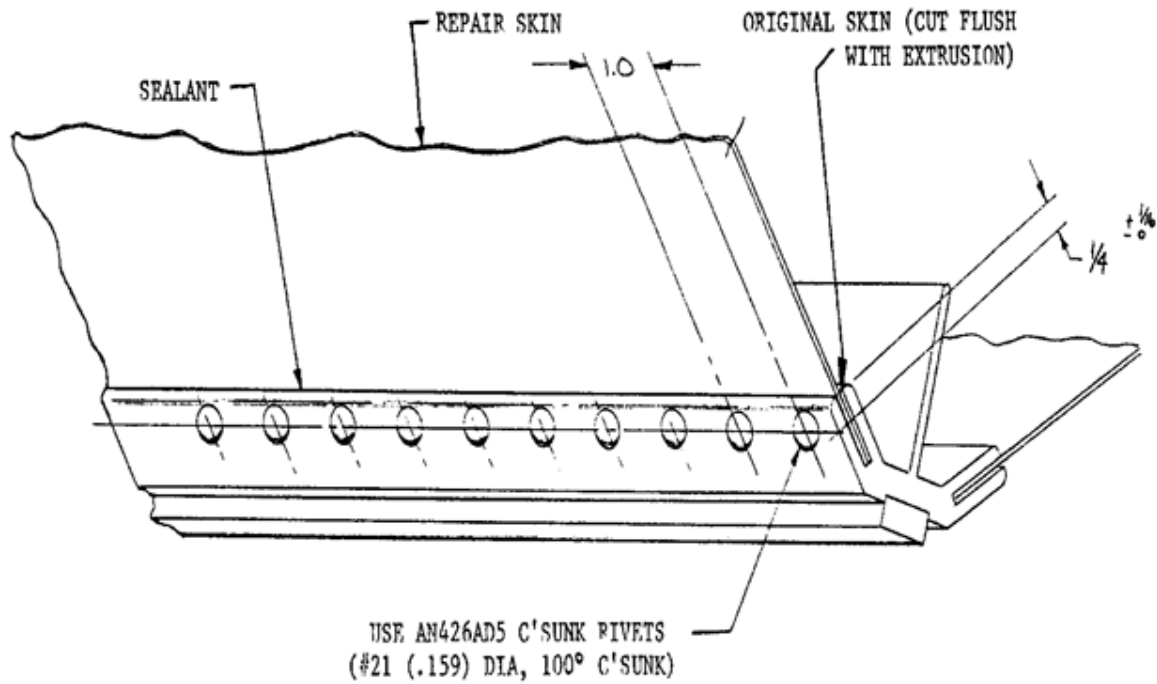


FIGURE 4.4A: MODEL 3730/3900/4000/6000/6100/8000 TYPICAL REPAIR BOTTOM SKIN TO KEEL INSTRUCTIONS

(PREFERRED METHOD)

1. REMOVE ORIGINAL DAMAGED SKIN CUT FLUSH WITH EXTRUSION.
2. REMOVE CAULKING FROM GROOVE OF EXTRUSION.
3. APPLY SEALANT IN GROOVE. (BE SURE TO USE PLENTY OF SEALANT!)
4. INSERT REPAIR SKIN INTO EXTRUSION.
5. DRILL AND COUNTERSINK HOLES AND RIVET INTO PLACE.

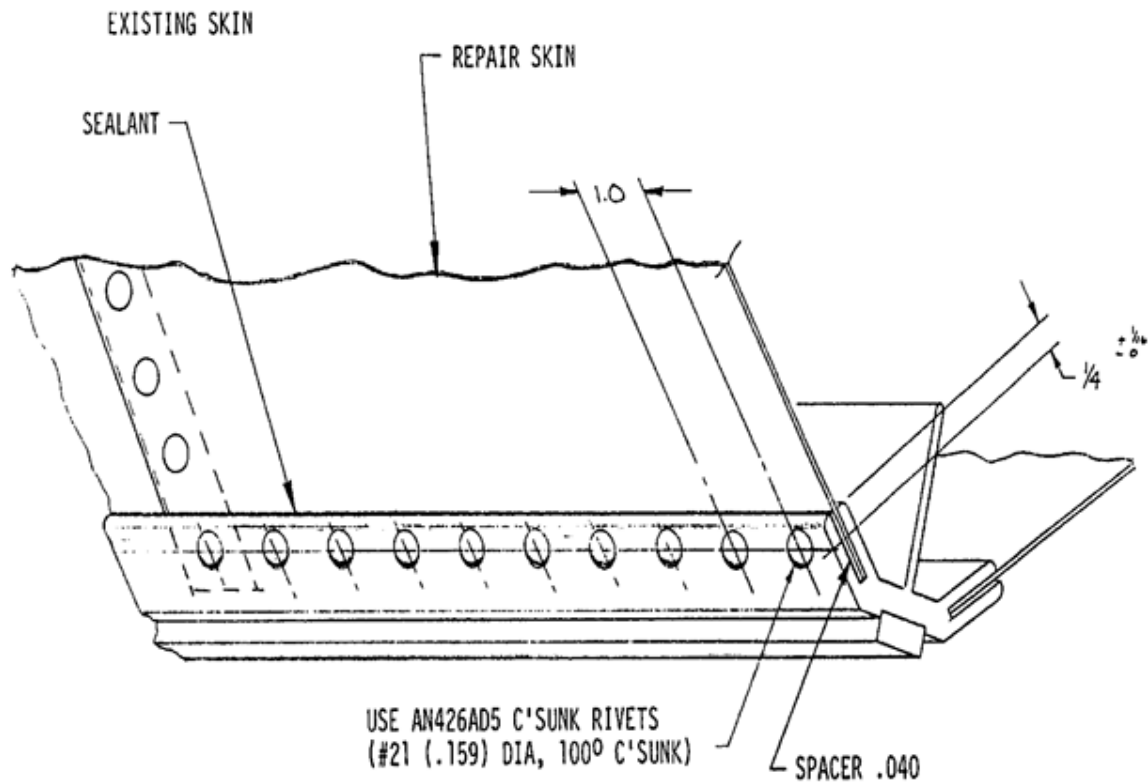


FIGURE 4.4B: MODEL 3730/3900/4000/6000/6100/8000 TYPICAL REPAIR BOTTOM SKIN TO KEEL INSTRUCTIONS

1. REMOVE ORIGINAL DAMAGED SKIN FROM EXTRUSION.
2. REMOVE CAULKING FROM GROOVE OF EXTRUSION.
3. APPLY SEALANT IN GROOVE. (BE SURE TO USE PLENTY OF SEALANT!)
4. INSERT REPAIR SKIN INTO EXTRUSION.
5. INSTALL SPACER BETWEEN REPAIR SKIN AND EXTRUSION.
6. DRILL AND COUNTERSINK HOLES AND RIVET INTO PLACE.

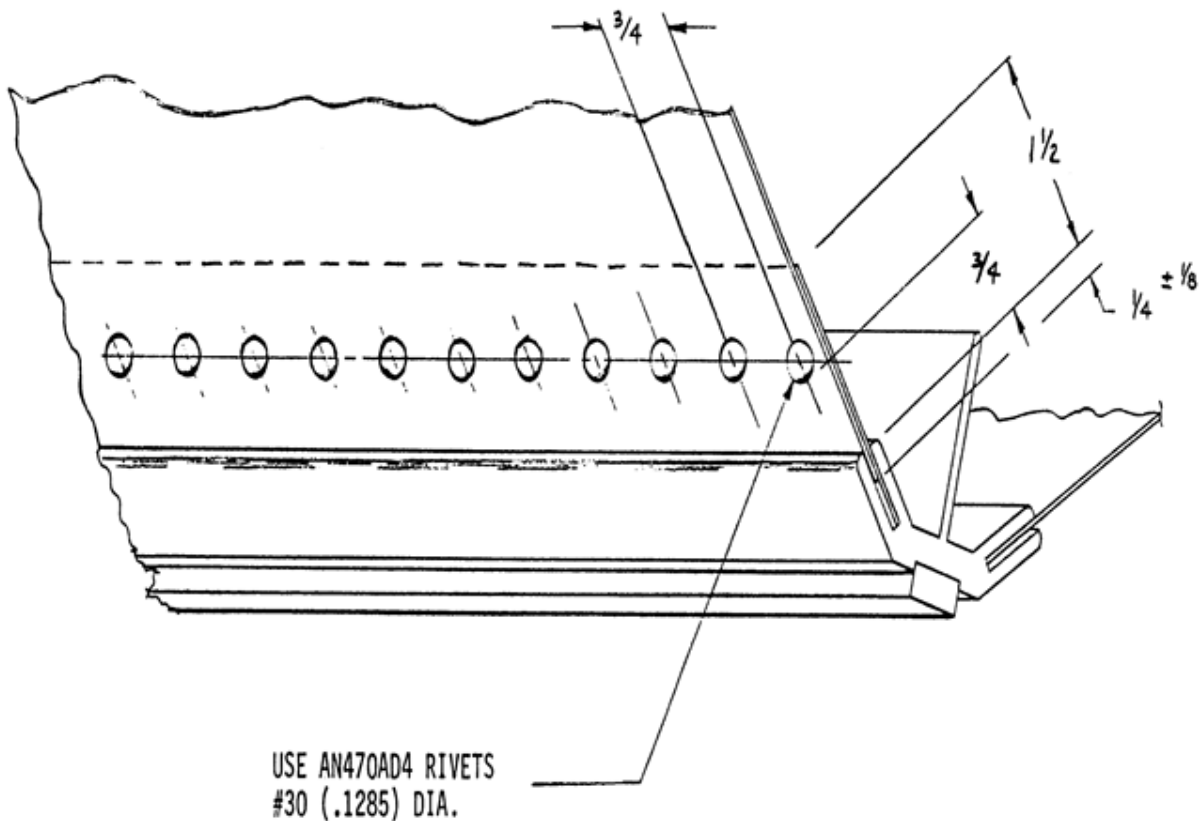


FIGURE 4.4C: MODEL 3730/3900/4000/6000/6100/8000 TYPICAL REPAIR BOTTOM SKIN TO KEEL (ALT) INSTRUCTIONS (ALTERNATE METHOD)

1. REMOVE ORIGINAL DAMAGED SKIN LEAVING APPROXIMATELY 1 1/2" OF SKIN PROTRUDING FROM EXTRUSION.
2. REMOVE CAULKING FROM GROOVE IN EXTRUSION.
3. INSTALL SEALANT IN GROOVE. (BE SURE TO USE PLENTY OF SEALANT!)
4. INSERT REPAIR SKIN IN GROOVE APPROXIMATELY 1/4".
5. LAYOUT HOLE PATTERN, DRILL, DE-CHIP, SEAL AND RIVET.

5.0 FLOAT HULL EXTRUSIONS

Extrusions in the float hull are formed from 6061-T6 or 6061-T4 aluminum alloy. Alternative raw materials are subject to Wipaire approval. See individual repair figures in this section (Section 5.0) for materials used in each repair. Pieces of extrusions may be purchased from Wipaire in full or desired lengths. Internal splice pieces for repairs may be purchased from Wipaire or fabricated per the figures in this section.

There are many ways to repair Wipline floats and each method depends on the degree and location of the damage. The following figures are examples of some repairs. Any repair to the hull not shown in this manual to be per FAA Advisory Circular 43.13.1A.

5.1 2100/2350 FLOAT EXTRUSION REPAIRS

5.1.1 SIMPLE EXTRUSION SPLICE REPAIR

The most used and simplest repair is a splice of an extrusion that is a simple one bend angle where the skins attach to each flange. Figure 5.1-1 depicts the general method of this splice repair. The replacement extrusion can be purchased from Wipaire, or in some cases, fabricated per the figures in this section. The internal splices may either be purchased from Wipaire or fabricated per the figures in this section. Consult the Table of Contents at the beginning of this manual to locate applicable figures for your repair.

Repair Process:

1. Remove rivets (if applicable) about 6-8" on either end of the area to be repaired.
2. Mark damaged area to be removed.
 - a. Be sure to start and end spliced area in the centers of the float bays to prevent interference with the bulkheads or bottom stiffeners.
3. Cut out damaged section being careful NOT to cut into the skins.
4. Obtain new extrusion from Wipaire Parts Department. Cut the repair section from the new extrusion in the exact area of the damage.
5. File to remove rough edges.
6. See Section 3.0 of this manual for appropriate fastener options.
7. Add internal splices, making sure the repair seam is located in the middle of the splice, and that the splice is centered between the bulkheads.
8. Use existing piece to back drill holes for attachment making sure the distance from the end of the splice to the center of the first hole is greater than or equal to 2 times the diameter of the rivet used.

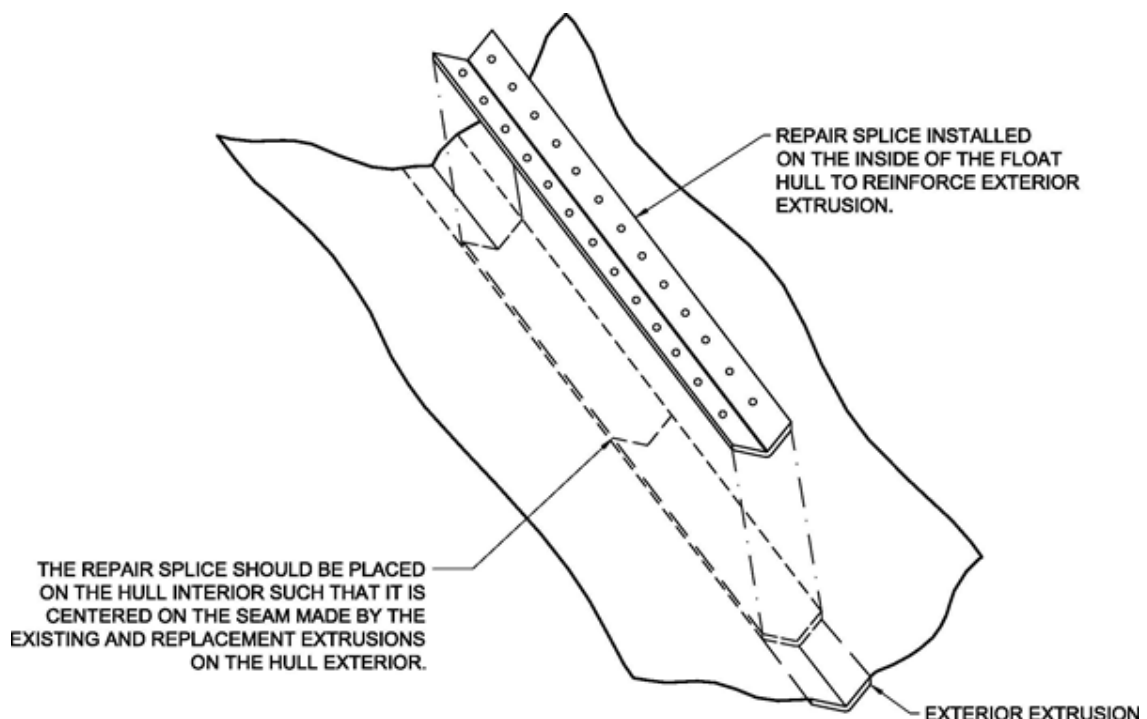


FIGURE 5.1-1: SIMPLE EXTRUSION SPLICE REPAIR

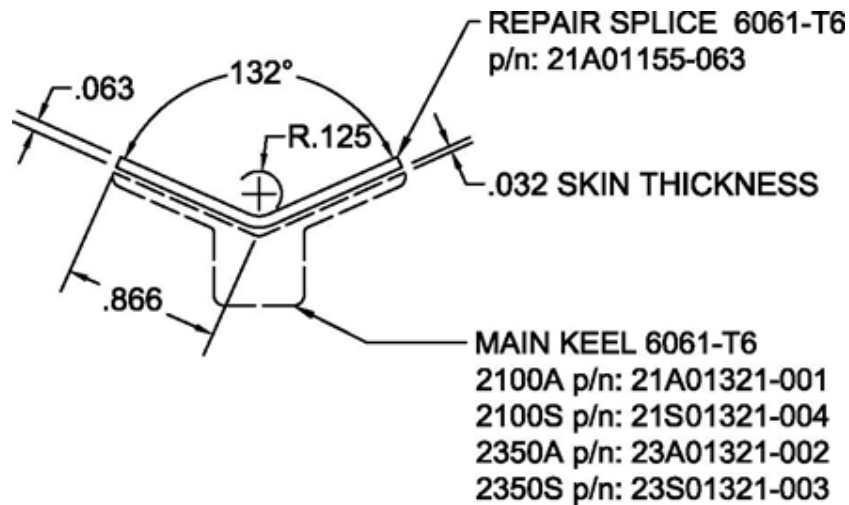


FIGURE 5.1-2: 2100/2350 MAIN KEEL REPAIR

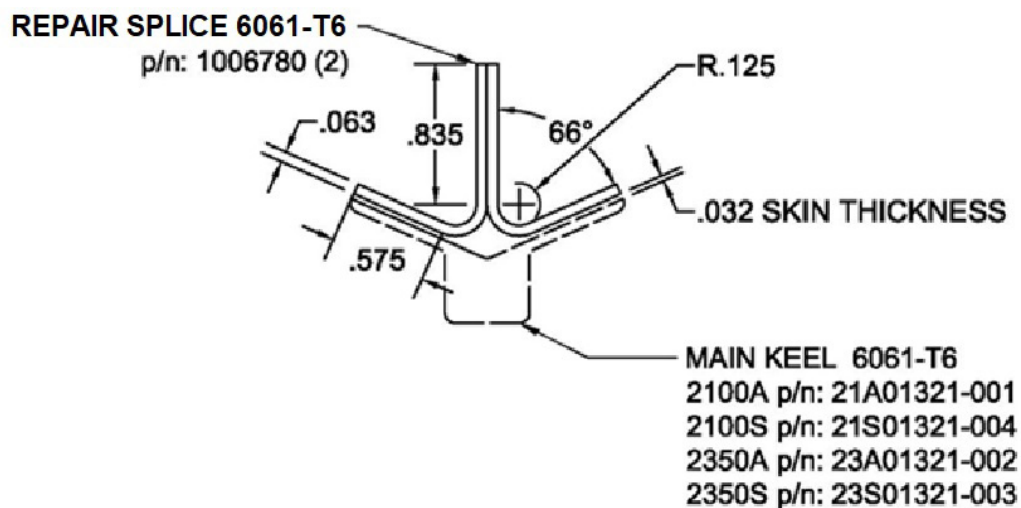


FIGURE 5.1-3: 2100/2350 ALTERNATE MAIN KEEL REPAIR

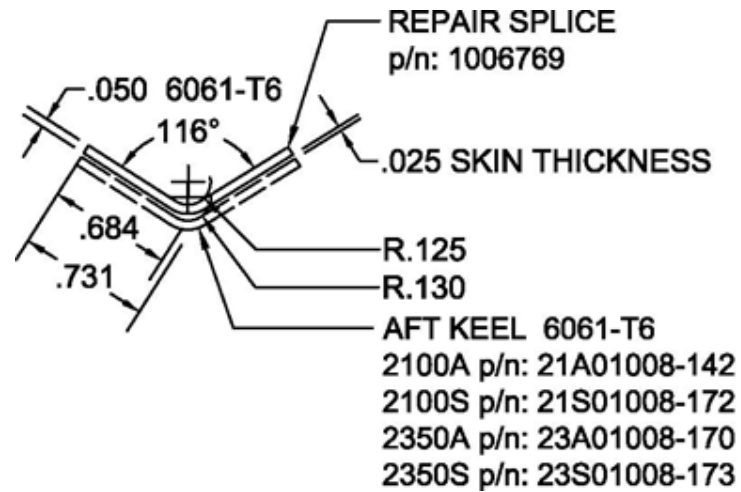


FIGURE 5.1-4: 2100/2350 AFT KEEL REPAIR

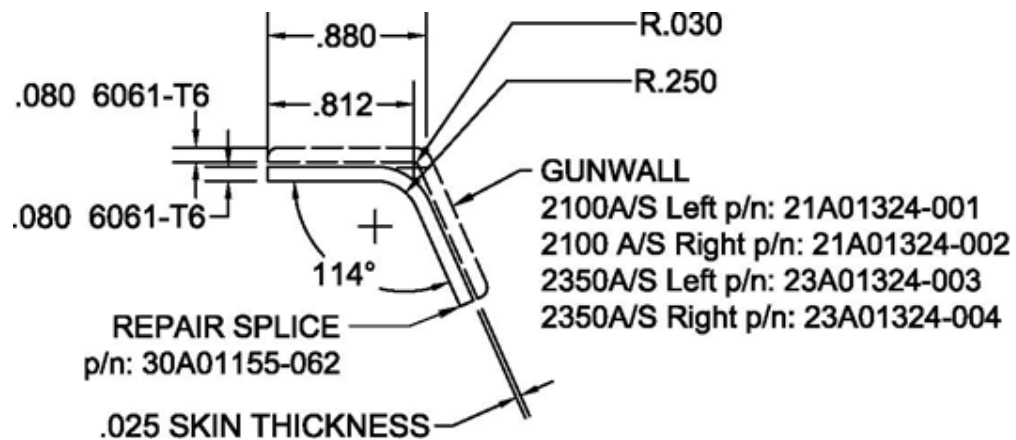


FIGURE 5.1-5: 2100/2350 GUNWALL REPAIR

5.2 3000/3450 FLOAT EXTRUSION REPAIRS

5.2.1 SIMPLE EXTRUSION SPLICE REPAIR

The most used and simplest repair is a splice of an extrusion that is a simple one bend angle where the skins attach to each flange. Figure 5.2-1 depicts the general method of this splice repair. The replacement extrusion can be purchased from Wipaire, or in some cases, fabricated per the figures in this section. The internal splices may either be purchased from Wipaire or fabricated per the figures in this section. Consult the Table of Contents at the beginning of this manual to locate applicable figures for your repair.

Repair Process:

1. Remove rivets (if applicable) about 6-8" on either end of the area to be repaired.
2. Mark damaged area to be removed.
 - a. Be sure to start and end spliced area in the centers of the float bays to prevent interference with the bulkheads or bottom stiffeners.
3. Cut out damaged section being careful NOT to cut into the skins.
4. Obtain new extrusion from Wipaire Parts Department. Cut the repair section from the new extrusion in the exact area of the damage.
5. File to remove rough edges.
6. See Section 3.0 of this manual for appropriate fastener options.
7. Add internal splices, making sure the repair seam is located in the middle of the splice, and that the splice is centered between the bulkheads.
8. Use existing piece to back drill holes for attachment making sure the distance from the end of the splice to the center of the first hole is greater than or equal to 2 times the diameter of the rivet used.

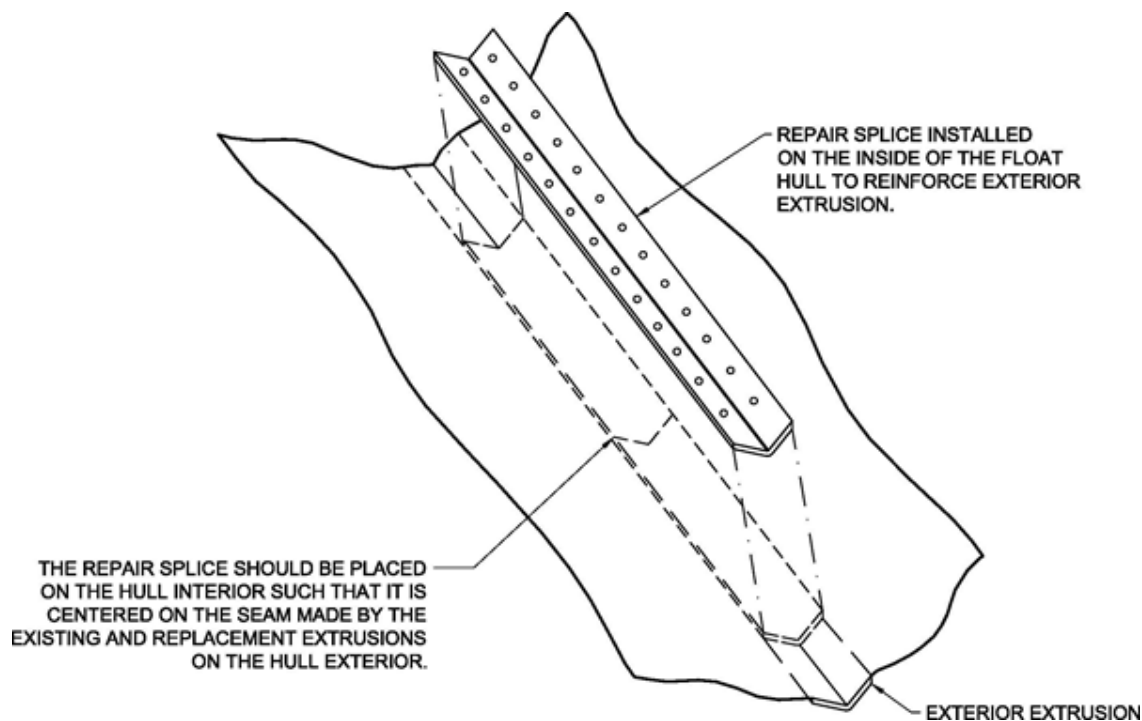


FIGURE 5.2-1: SIMPLE EXTRUSION SPLICE REPAIR

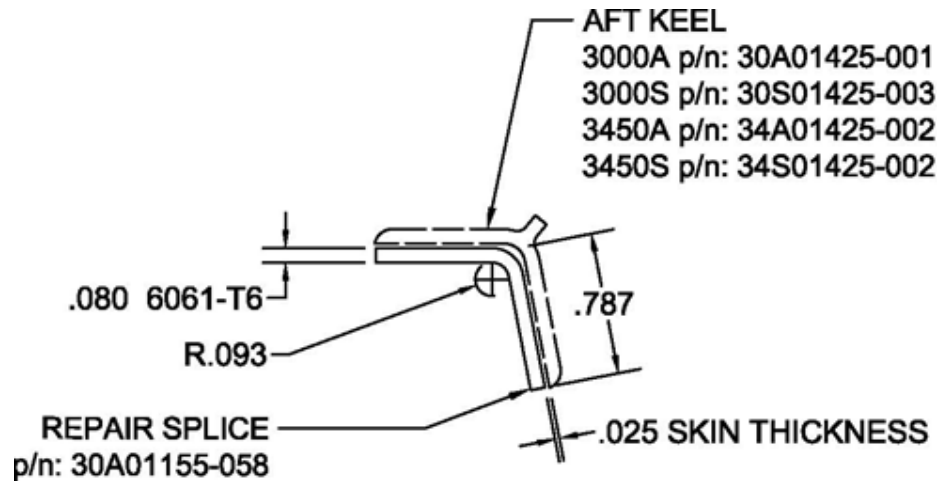


FIGURE 5.2-2: 3000/3450 AFT KEEL REPAIR

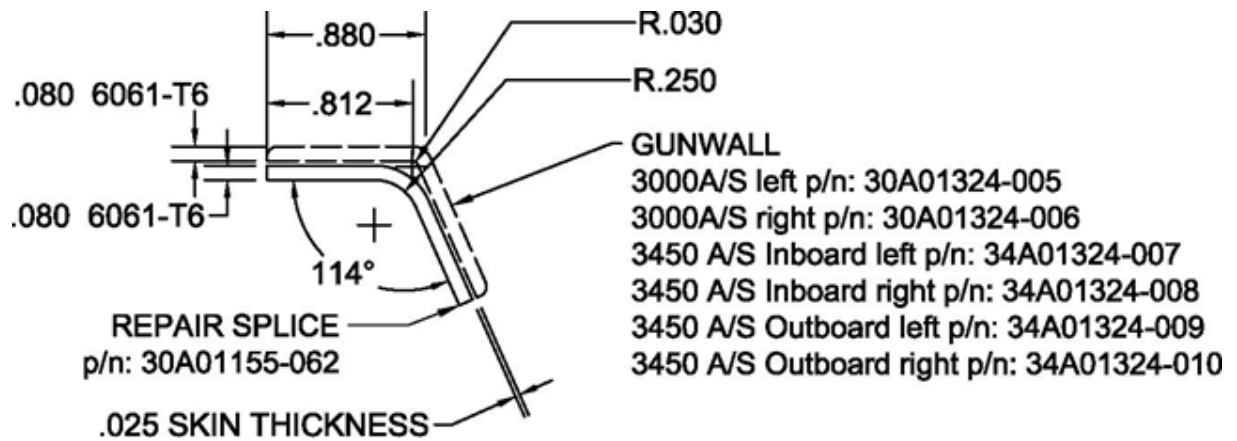


FIGURE 5.2-3: 3000/3450 GUNWALL REPAIR

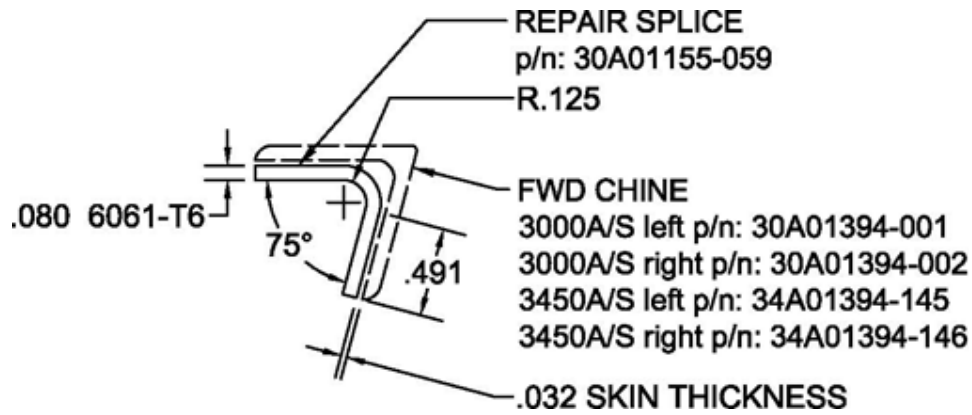


FIGURE 5.2-4: 3000/3450 FWD CHINE REPAIR

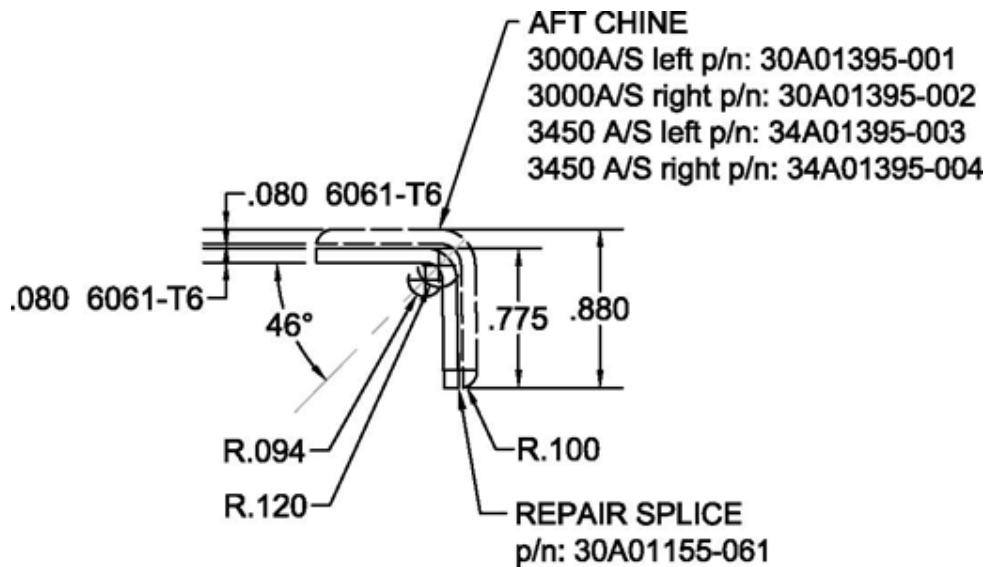
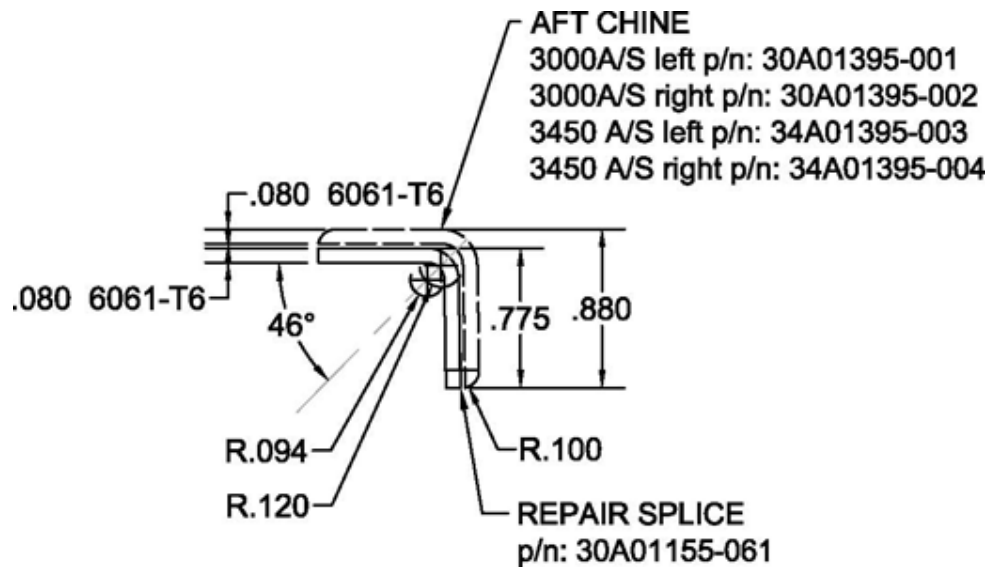


FIGURE 5.2-4: 3000/3450 FWD CHINE REPAIR

**FIGURE 5.2-5: 3000/3450 AFT CHINE REPAIR**

5.2.2 MAIN KEEL EXTRUSION SPLICE REPAIR

On several float models, the main keel will have a flat bottom with an attached wear strip that must be replaced when repairs are made. Figure 5.2-6 depicts the general method of this splice repair. The replacement extrusion can be purchased from Wipaire, and the internal splices may either be purchased from Wipaire or fabricated per the figures in this section. Consult the Table of Contents at the beginning of this manual to locate applicable figures for your repair.

Repair Process:

1. Remove entire wear strip. Purchase new Wear Strip from Wipaire (3A01200-001).
2. Remove rivets (if applicable) about 6-8" on either end of the area to be repaired.
3. Mark damaged area to be removed.
 - a. Be sure to start and end spliced area in the centers of the float bays to prevent interference with the bulkheads or bottom stiffeners.
4. Cut out damaged section being careful NOT to cut into the skins.
5. Obtain new extrusion from Wipaire Parts Department (30A01377-001 or 34A01377-002), and cut out the repair section from the new extrusion in the exact area of the damage.
6. File to remove rough edges.
7. See Section 3.0 of this manual for appropriate fastener options.
8. Add internal splices making sure the repair seam is located in the middle of the splice.
9. Install the new wear strip.
 - a. Position wear strip over main keel
 - b. Drill #29 dia. hole close to each end and between each bulkhead (use old wear strip for approximate locations).
 - c. Tap main keel to 8-32 thru
 - d. Drill wear strip to #17 dia. hole and c'sink 100°
 - e. Apply float sealant PR-1422 or equivalent between strip and keel.
 - f. Secure strip to keel with AN507C832-8 screws, AN960-8 washers, and AN365-832 nuts.

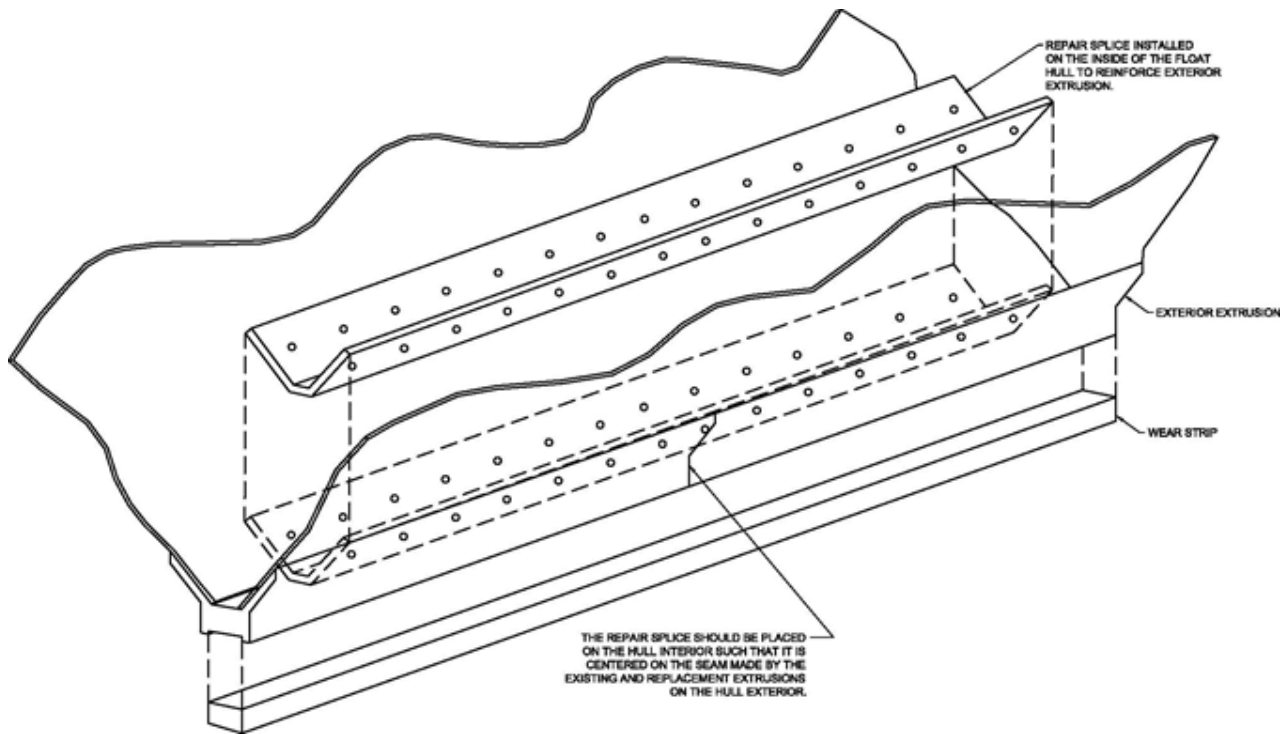


FIGURE 5.2-6: MAIN KEEL SIMPLE EXTRUSION SPLICE REPAIR

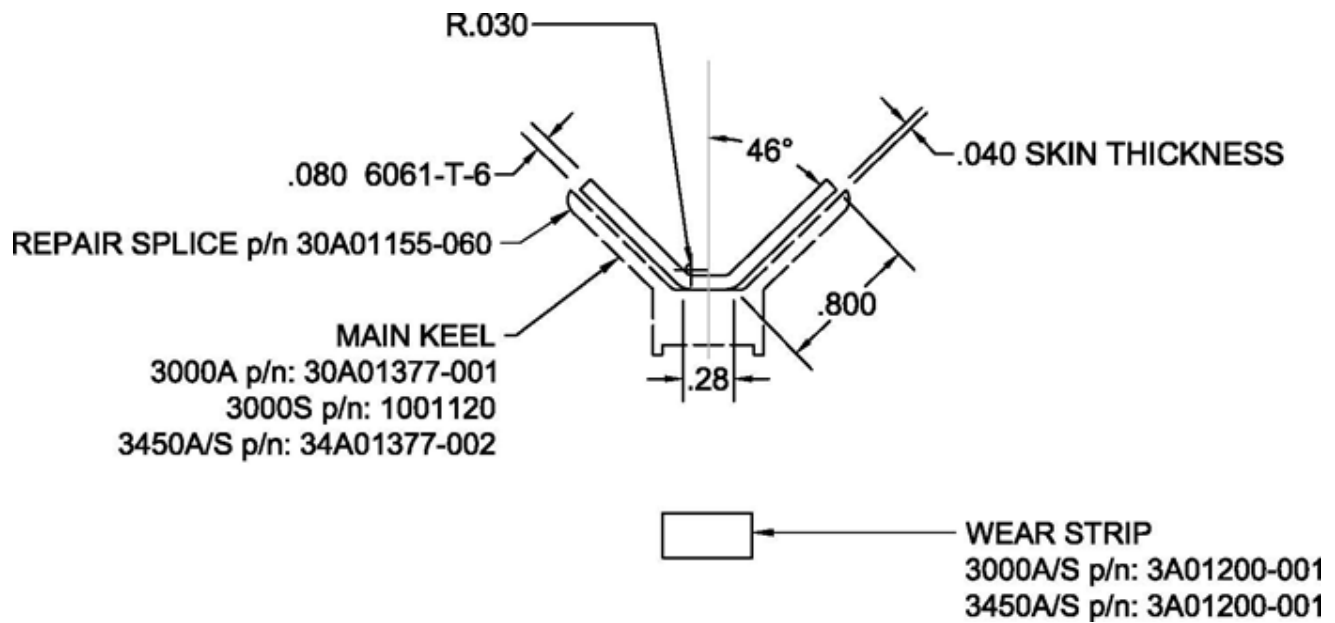


FIGURE 5.2-7: 3000/3450 MAIN KEEL REPAIR

5.3 3730/3900 FLOAT EXTRUSION REPAIRS

5.3.1 SIMPLE EXTRUSION SPLICE REPAIR

The most used and simplest repair is a splice of an extrusion that is a simple one bend angle where the skins attach to each flange. Figure 5.3-1 depicts the general method of this splice repair. The replacement extrusion can be purchased from Wipaire, or in some cases, fabricated per the figures in this section. The internal splices may either be purchased from Wipaire or fabricated per the figures in this section. Consult the Table of Contents at the beginning of this manual to locate applicable figures for your repair.

Repair Process:

1. Remove rivets (if applicable) about 6-8" on either end of the area to be repaired.
2. Mark damaged area to be removed.
 - a. Be sure to start and end spliced area in the centers of the float bays to prevent interference with the bulkheads or bottom stiffeners.
3. Cut out damaged section being careful NOT to cut into the skins.
4. Obtain new extrusion from Wipaire Parts Department. Cut the repair section from the new extrusion in the exact area of the damage.
5. File to remove rough edges.
6. See Section 3.0 of this manual for appropriate fastener options.
7. Add internal splices, making sure the repair seam is located in the middle of the splice, and that the splice is centered between the bulkheads. Use existing piece to back drill holes for attachment making sure the distance from the end of the splice to the center of the first hole is greater than or equal to 2 times the diameter of the rivet used.

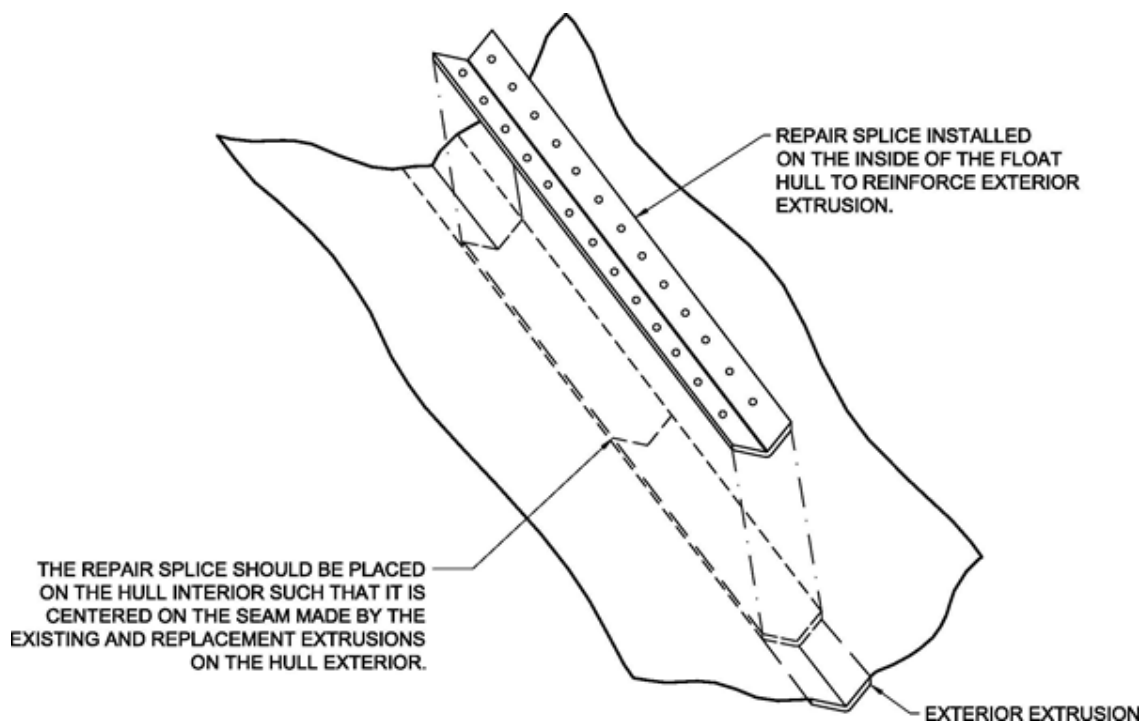
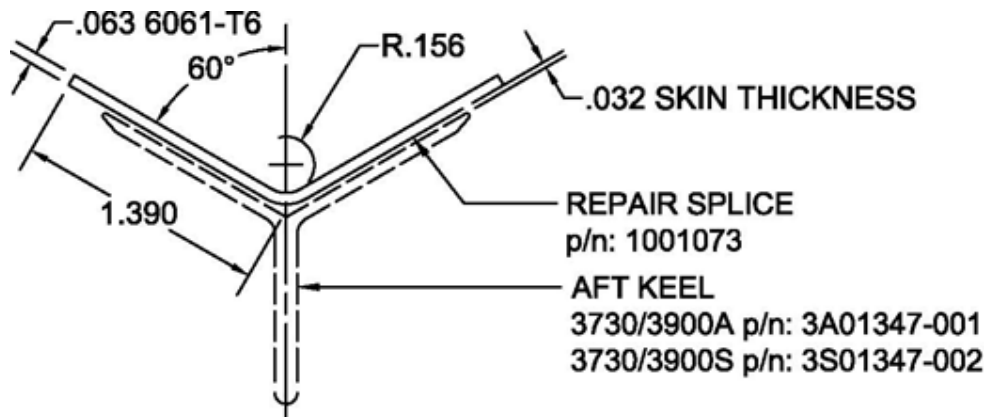


FIGURE 5.3-1: SIMPLE EXTRUSION SPLICE REPAIR

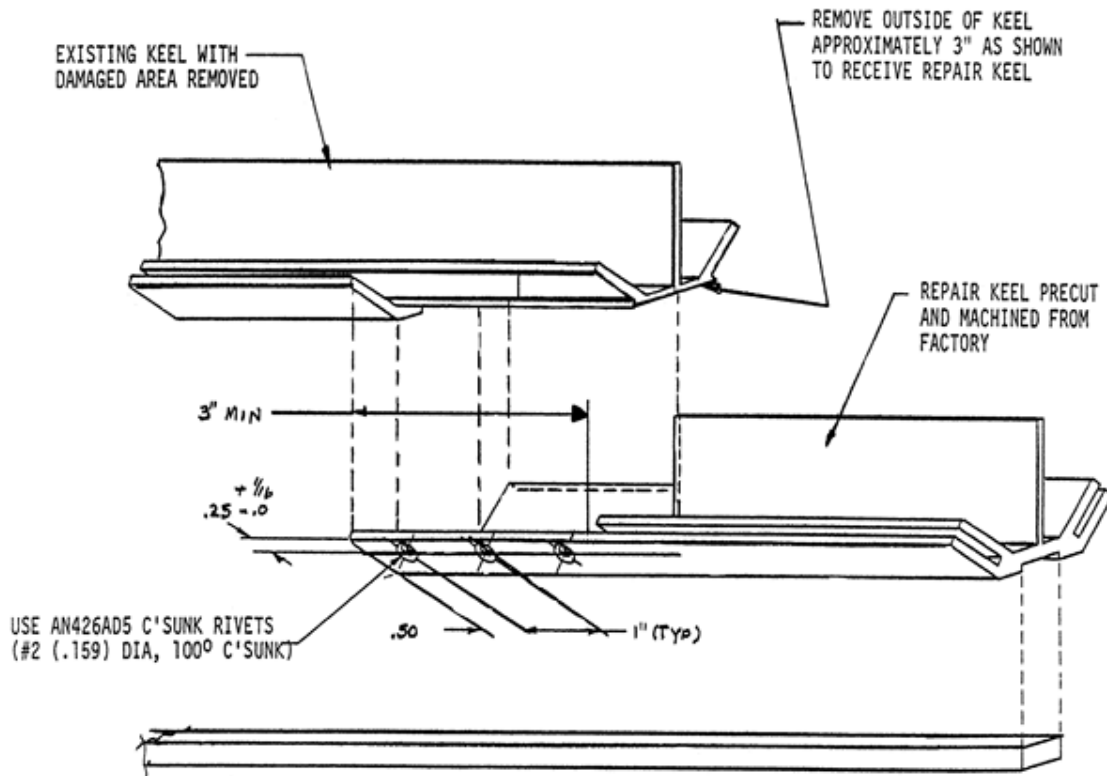
**FIGURE 5.3-2: 3730/3900 AFT KEEL REPAIR**

5.3.2 COMPLEX EXTRUSION SPLICE REPAIR

The 3730/3900, 4000, 6000, and 8000 float models utilize complex extrusions with channels on each flange into which the skins are inserted. Figure 5.3-3 depicts the general method of this splice repair. The replacement extrusions and wear strips can be purchased from the Wipaire Parts Department. Consult Table 5.3-1 below to locate applicable part numbers for your repair.

Repair Process:

1. Remove the damaged area. On the remaining extrusion, cut out 3" of the outer layer of the extrusion as shown in Figure 5.3-3 so it can receive the repair piece.
2. Purchase the repair part from Wipaire. The repair part will be pre-cut and machined from the factory so only the outside layer of the extrusion remains for 3" at the end and the repair piece will notch together with the existing keel.
3. Fasten the 2 pieces together in the overlapping area using AN426AD5 c'sunk rivets spaced per Figure 5.3-3.
4. If repairing the Main Keel, finish repair by installing a new Wear Strip which can be purchased from Wipaire.
 - a. Position wear strip over main keel
 - b. Drill #29 dia. hole close to each end and between each bulkhead (use old wear strip for approx. locations).
 - c. Tap main keel to 8-32 thru
 - d. Drill wear strip to #17 dia hole and c'sink 100°
 - e. Apply float sealant PR-1422 or equivalent between strip and keel.
 - f. Secure strip to keel with AN507C832-8 screws, AN960-8 washers, and AN365-832 nuts.

**FIGURE 5.3-3: COMPLEX EXTRUSION SPLICE REPAIR**

Main Keel	3A01354-001 (A) 3A01354-002 (S)
Wear Strip	3A01200-001
Sister Keel (outer)	3A01342-001 (Left) 3A01342-002 (Right)
Fwd Chine	3A01351-001 (Left) 3A01351-002 (Right)
Aft Chine	3A01363-001 (Left) 3A01363-002 (Right)
Gunwall	3A01366-001 (Left) 3A01366-002 (Right)

TABLE 5.3-1 3730/3900 COMPLEX EXTRUSION REPLACEMENT PARTS

5.4 4000 FLOAT EXTRUSION REPAIRS

5.4.1 Simple Extrusion Splice Repair

The most used and simplest repair is a splice of an extrusion that is a simple one bend angle where the skins attach to each flange. Figure 5.4-1 depicts the general method of this splice repair. The replacement extrusion can be purchased from Wipaire, or in some cases, fabricated per the figures in this section. The internal splices may either be purchased from Wipaire or fabricated per the figures in this section. Consult the Table of Contents at the beginning of this manual to locate applicable figures for your repair.

Repair Process:

1. Remove rivets (if applicable) about 6-8" on either end of the area to be repaired.
2. Mark damaged area to be removed.
 - a. Be sure to start and end spliced area in the centers of the float bays to prevent interference with the bulkheads or bottom stiffeners.
3. Cut out damaged section being careful NOT to cut into the skins.
4. Obtain new extrusion from Wipaire Parts Department. Cut the repair section from the new extrusion in the exact area of the damage.
5. File to remove rough edges.
6. See Section 3.0 of this manual for appropriate fastener options.
7. Add internal splices, making sure the repair seam is located in the middle of the splice, and that the splice is centered between the bulkheads.
8. Use existing piece to back drill holes for attachment making sure the distance from the end of the splice to the center of the first hole is greater than or equal to 2 times the diameter of the rivet used.

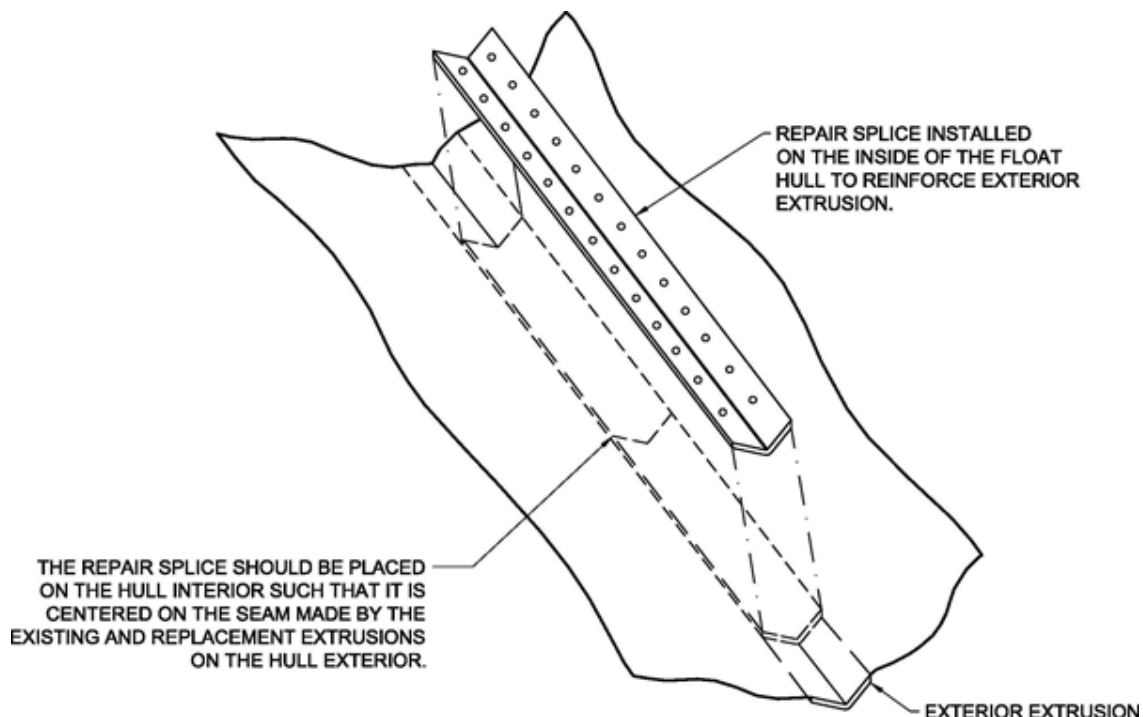
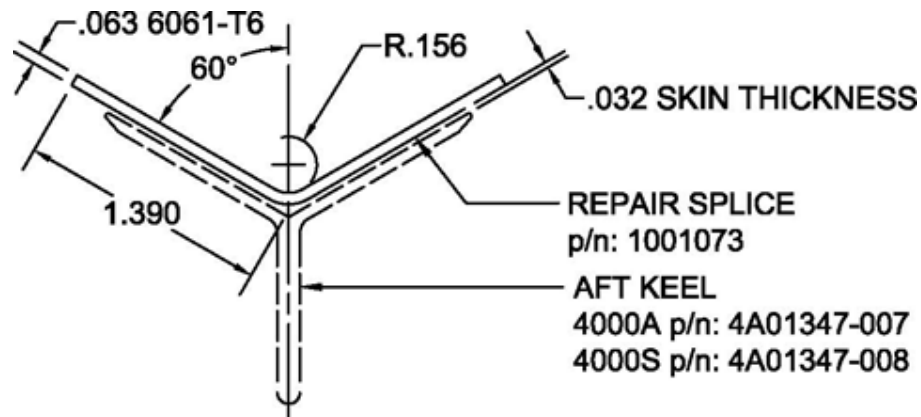


FIGURE 5.4-1: SIMPLE EXTRUSION SPLICE REPAIR

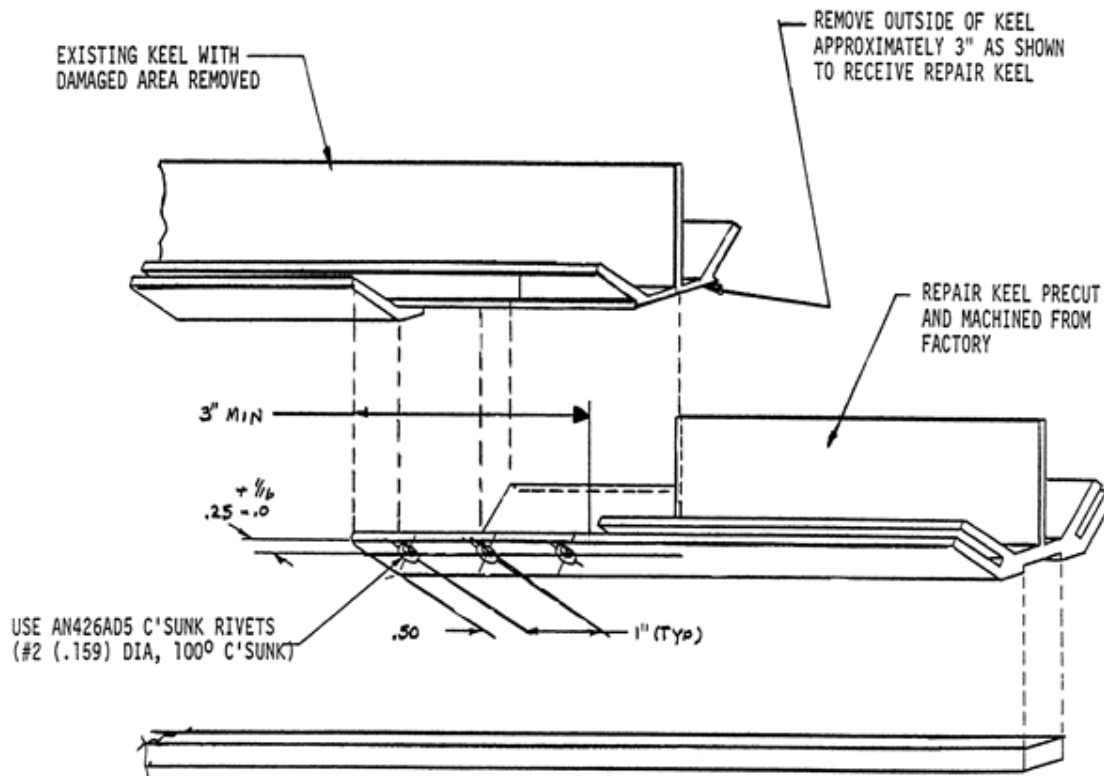
**FIGURE 5.4-2: 4000 AFT KEEL REPAIR**

5.4.2 COMPLEX EXTRUSION SPLICE REPAIR

The 3730/3900, 4000, 6000, and 8000 float models utilize complex extrusions with channels on each flange into which the skins are inserted. Figure 5.4-3 depicts the general method of this splice repair. The replacement extrusions and wear strips can be purchased from the Wipaire Parts Department. Consult Table 5.4-1 below to locate applicable part numbers for your repair.

Repair Process:

1. Remove the damaged area. On the remaining extrusion, cut out 3" of the outer layer of the extrusion as shown in Figure 5.4-3 so it can receive the repair piece.
2. Purchase the repair part from Wipaire. The repair part will be pre-cut and machined from the factory so only the outside layer of the extrusion remains for 3" at the end and the repair piece will notch together with the existing keel.
3. Fasten the 2 pieces together in the overlapping area using AN426AD5 c'sunk rivets spaced per Figure 5.4-3.
4. If repairing the Main Keel, finish repair by installing a new Wear Strip which can be purchased from Wipaire.
 - a. Position wear strip over main keel
 - b. Drill #29 dia. hole close to each end and between each bulkhead (use old wear strip for approx. locations).
 - c. Tap main keel to 8-32 thru
 - d. Drill wear strip to #17 dia hole and c'sink 100°
 - e. Apply float sealant PR-1422 or equivalent between strip and keel.
 - f. Secure strip to keel with AN507C832-8 screws, AN960-8 washers, and AN365-832 nuts.

**FIGURE 5.4-3: COMPLEX EXTRUSION SPLICE REPAIR**

Main Keel	4A01354-007 (A) 4S01354-008 (S)
Wear Strip	3A01200-001 (A) 6S01200-002 (S)
Sister Keel (outer)	4A01342-008 (Left) 4A01342-007 (Right)
Fwd Chine	4A01331-001 (Left) 4A01331-002 (Right)
Aft Chine	4A01332-001 (Left) 4A01332-002 (Right)
Gunwall	4A01330-001 (Left) 4A01330-002 (Right)

TABLE 5.4-1: 4000 COMPLEX EXTRUSION REPLACEMENT PARTS

5.5 6000 FLOAT EXTRUSION REPAIRS

5.5.1 SIMPLE EXTRUSION SPLICE REPAIR

The most used and simplest repair is a splice of an extrusion that is a simple one bend angle where the skins attach to each flange. Figure 5.5-1 depicts the general method of this splice repair. The replacement extrusion can be purchased from Wipaire, or in some cases, fabricated per the figures in this section. The internal splices may either be purchased from Wipaire or fabricated per the figures in this section. Consult the Table of Contents at the beginning of this manual to locate applicable figures for your repair.

Repair Process:

1. Remove rivets (if applicable) about 6-8" on either end of the area to be repaired.
2. Mark damaged area to be removed.
 - a. Be sure to start and end spliced area in the centers of the float bays to prevent interference with the bulkheads or bottom stiffeners.
3. Cut out damaged section being careful NOT to cut into the skins.
4. Obtain new extrusion from Wipaire Parts Department. Cut the repair section from the new extrusion in the exact area of the damage.
5. File to remove rough edges.
6. See Section 3.0 of this manual for appropriate fastener options.
7. Add internal splices (1001073), making sure the repair seam is located in the middle of the splice, and that the splice is centered between the bulkheads. Use existing piece to back drill holes for attachment making sure the distance from the end of the splice to the center of the first hole is greater than or equal to 2 times the diameter of the rivet used.

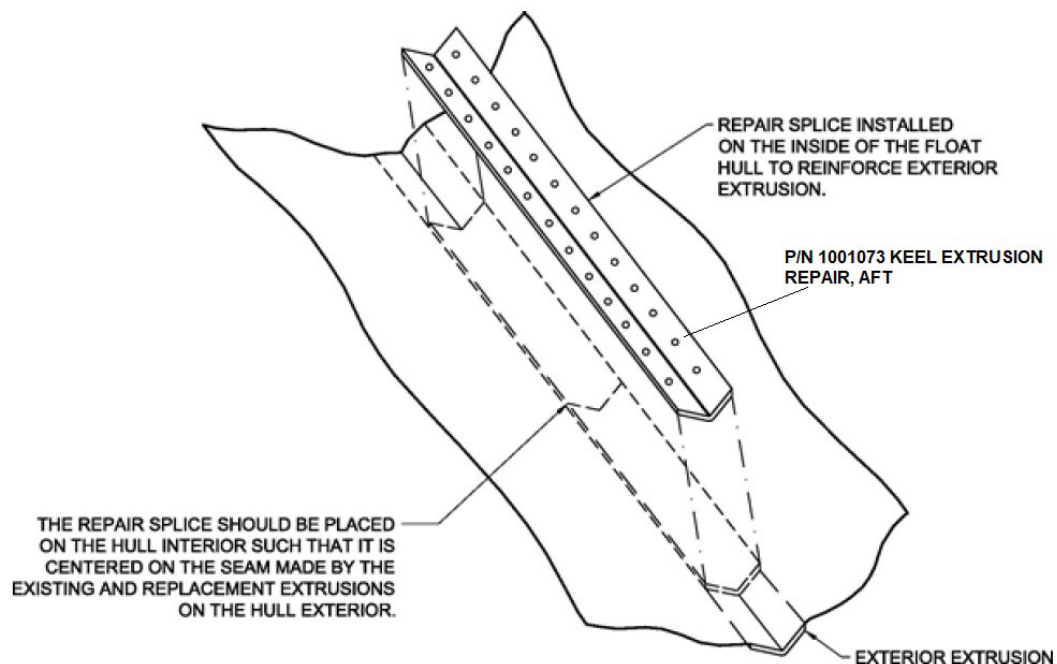
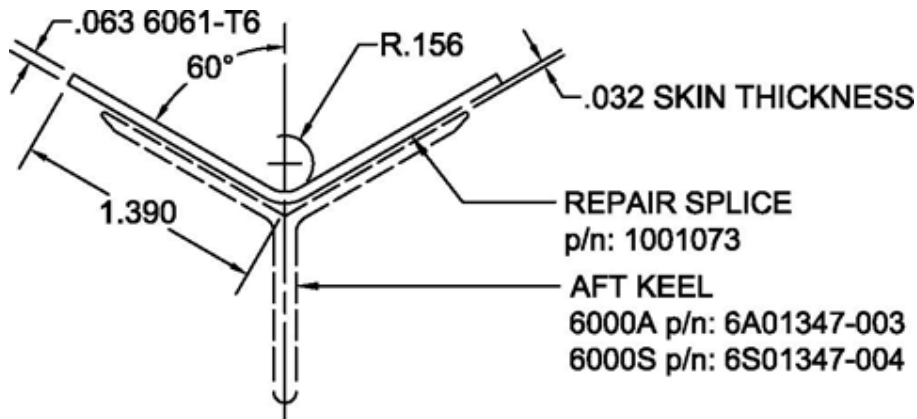


FIGURE 5.5-1: SIMPLE EXTRUSION SPLICE REPAIR

**FIGURE 5.5-2: 6000 AFT KEEL REPAIR**

5.5.2 COMPLEX EXTRUSION SPLICE REPAIR

The 3730/3900, 4000, 6000, and 8000 float models utilize complex extrusions with channels on each flange into which the skins are inserted. Figure 5.5-3 depicts the general method of this splice repair. The replacement extrusions and wear strips can be purchased from the Wipaire Parts Department. Consult Table 5.5-1 below to locate applicable part numbers for your repair.

Repair Process:

1. Remove the damaged area. On the remaining extrusion, cut out 3" of the outer layer of the extrusion as shown in Figure 5.5-3 so it can receive the repair piece.
2. Purchase the repair part from Wipaire. The repair part will be pre-cut and machined from the factory so only the outside layer of the extrusion remains for 3" at the end and the repair piece will notch together with the existing keel.
3. Fasten the 2 pieces together in the overlapping area using AN426AD5 c'sunk rivets spaced per Figure 5.5-3.
4. If repairing the Main Keel, finish repair by installing a new Wear Strip which can be purchased from Wipaire.
 - a. Position wear strip over main keel
 - b. Drill #29 dia. hole close to each end and between each bulkhead (use old wear strip for approx. locations).
 - c. Tap main keel to 8-32 thru
 - d. Drill wear strip to #17 dia hole and c'sink 100°
 - e. Apply float sealant PR-1422 or equivalent between strip and keel.
 - f. Secure strip to keel with AN507C832-8 screws, AN960-8 washers, and AN365-832 nuts.

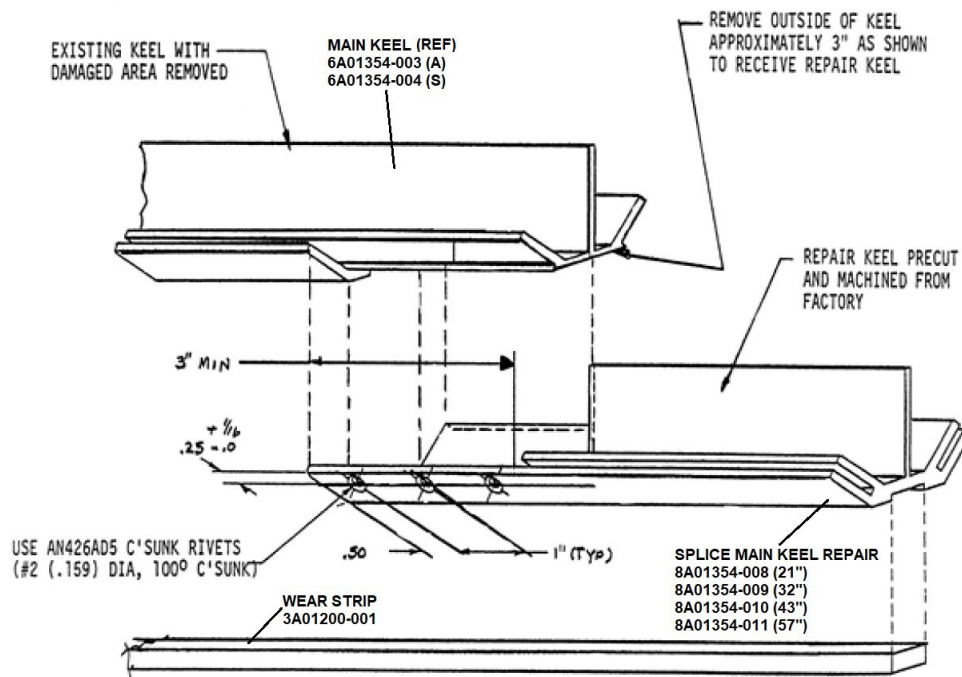
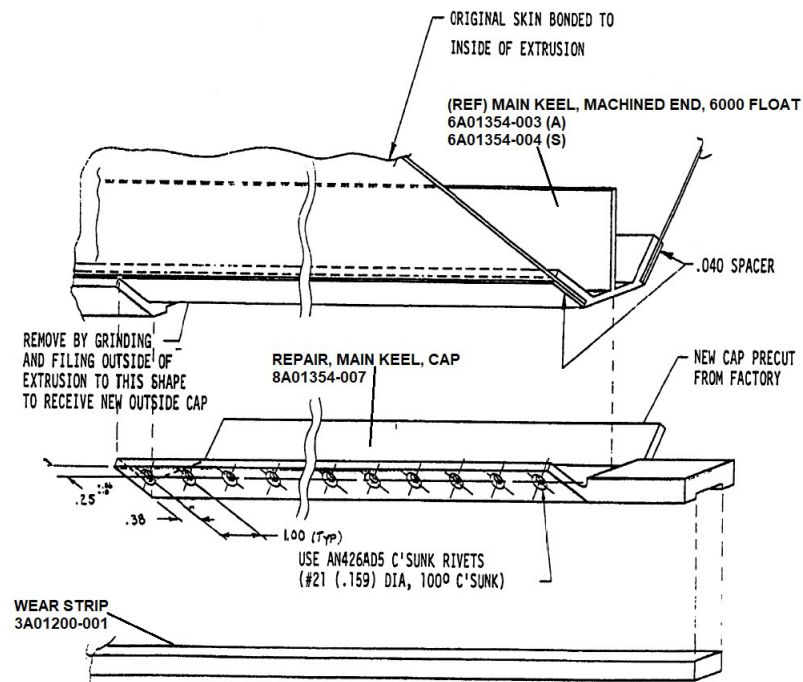


FIGURE 5.5-3: COMPLEX EXTRUSION SPLICE REPAIR



1. Lay out new repair cap on damaged extrusion.
2. Remove outside of damaged extrusion by filing or grinding to inside shape of repair cap.
3. Match drill or lay out and drill hole pattern as shown.
4. Rivet outside cap and spacer to existing inside extrusion.
5. Apply keel wear strip with any good 2-part epoxy.

FIGURE 5.5-4: TYPICAL CAP SPLICE TO KEEL

5.6 7000 FLOAT EXTRUSION REPAIRS

5.6.1 SIMPLE EXTRUSION SPLICE REPAIR

The most used and simplest repair is a splice of an extrusion that is a simple one bend angle where the skins attach to each flange. Figure 5.6-1 depicts the general method of this splice repair. The replacement extrusion can be purchased from Wipaire, or in some cases, fabricated per the figures in this section. The internal splices may either be purchased from Wipaire or fabricated per the figures in this section. Consult the Table of Contents at the beginning of this manual to locate applicable figures for your repair.

Repair Process:

1. Remove rivets (if applicable) about 6-8" on either end of the area to be repaired.
2. Mark damaged area to be removed.
 - a. Be sure to start and end spliced area in the centers of the float bays to prevent interference with the bulkheads or bottom stiffeners.
3. Cut out damaged section being careful NOT to cut into the skins.
4. Obtain new extrusion from Wipaire Parts Department. Cut the repair section from the new extrusion in the exact area of the damage.
5. File to remove rough edges.
6. See Section 3.0 of this manual for appropriate fastener options.
7. Add internal splices, making sure the repair seam is located in the middle of the splice, and that the splice is centered between the bulkheads.
8. Use existing piece to back drill holes for attachment making sure the distance from the end of the splice to the center of the first hole is greater than or equal to 2 times the diameter of the rivet used.

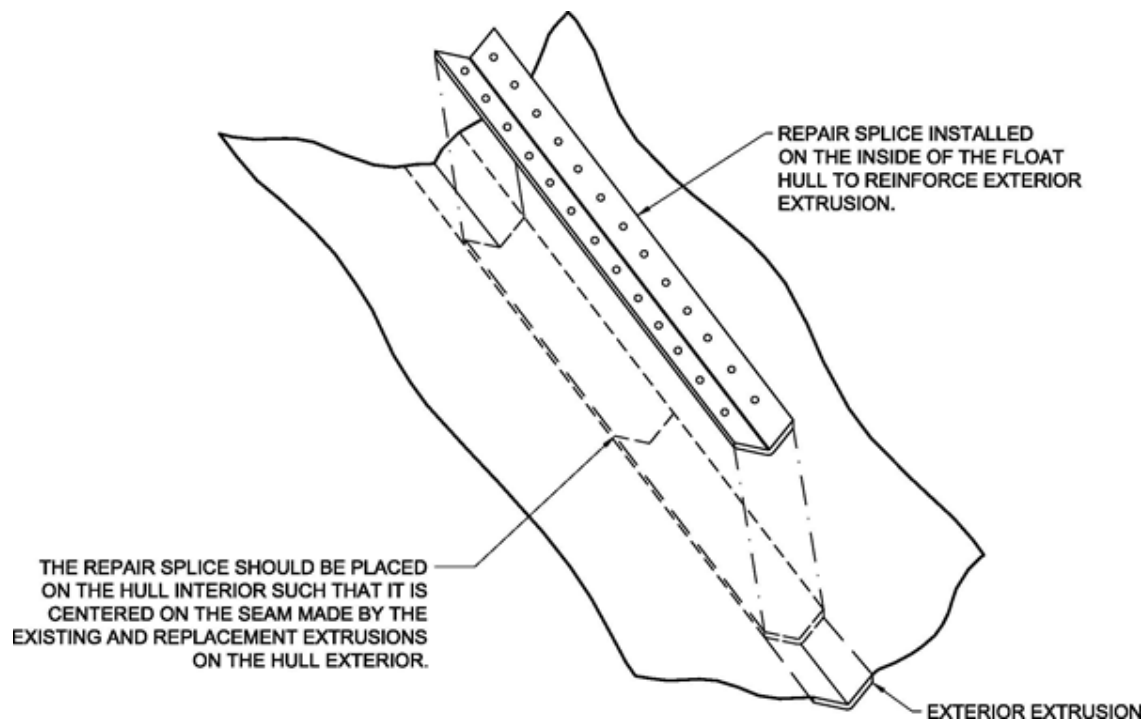


FIGURE 5.6-1: SIMPLE EXTRUSION SPLICE REPAIR

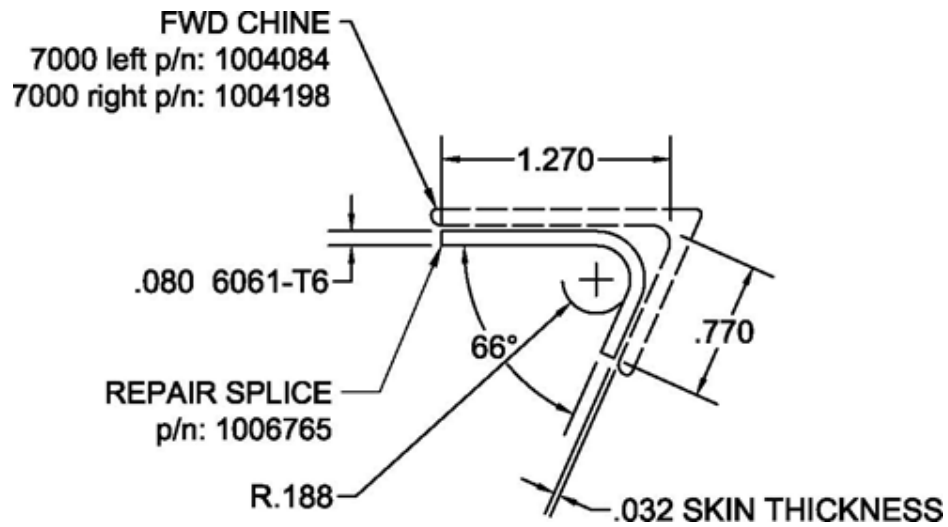


FIGURE 5.6-2: 7000 FWD CHINE REPAIR

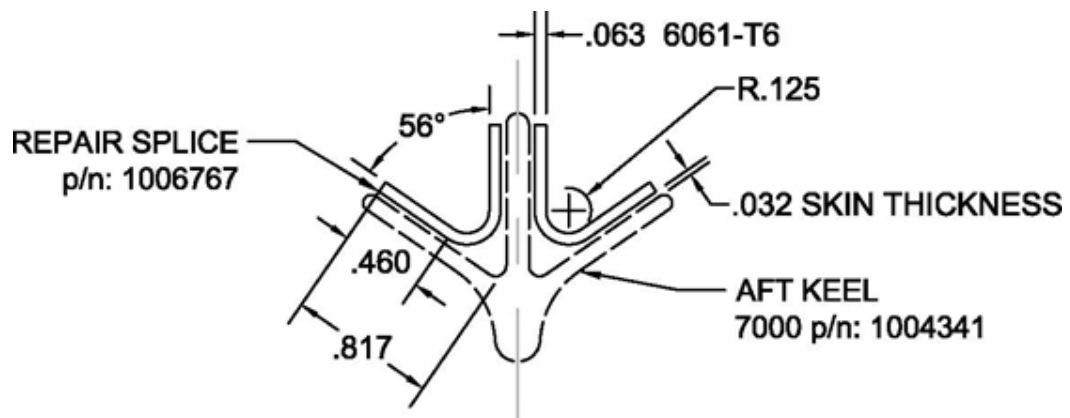


FIGURE 5.6-3: 7000 AFT KEEL REPAIR

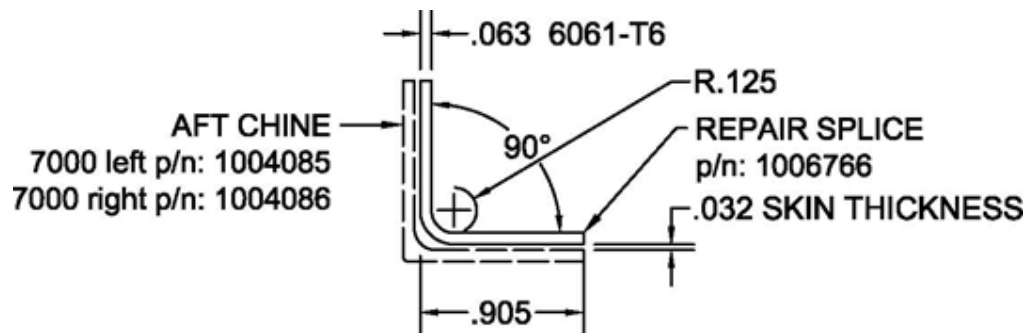


FIGURE 5.6-4: 7000 AFT CHINE REPAIR

5.6.2 MAIN KEEL EXTRUSION SPLICE REPAIR

On several float models, the main keel will have a flat bottom with an attached wear strip that must be replaced when repairs are made. Figure 5.6-5 depicts the general method of this splice repair. The replacement extrusion can be purchased from Wipaire, and the internal splices may either be purchased from Wipaire or fabricated per the figures in this section. Consult the Table of Contents at the beginning of this manual to locate applicable figures for your repair.

Repair Process:

1. Remove entire wear strip. Purchase new Wear Strip from Wipaire (1004039).
2. Remove rivets (if applicable) about 6-8" on either end of the area to be repaired.
3. Mark damaged area to be removed.
 - a. Be sure to start and end spliced area in the centers of the float bays to prevent interference with the bulkheads or bottom stiffeners.
4. Cut out damaged section being careful NOT to cut into the skins.
5. Obtain new extrusion from Wipaire Parts Department (1004031) and cut out the repair section from the new extrusion in the exact area of the damage.
6. File to remove rough edges.
7. See Section 3.0 of this manual for appropriate fastener options.
8. Add internal splices making sure the repair seam is located in the middle of the splice.
9. Install the new wear strip.
 - a. Position wear strip over main keel
 - b. Drill #29 dia. hole close to each end and between each bulkhead (use old wear strip for approximate locations).
 - c. Tap main keel to 8-32 thru
 - d. Drill wear strip to #17 dia. hole and c'sink 100°
 - e. Apply float sealant PR-1422 or equivalent between strip and keel.
 - f. Secure strip to keel with AN507C832-8 screws, AN960-8 washers, and AN365-832 nuts.

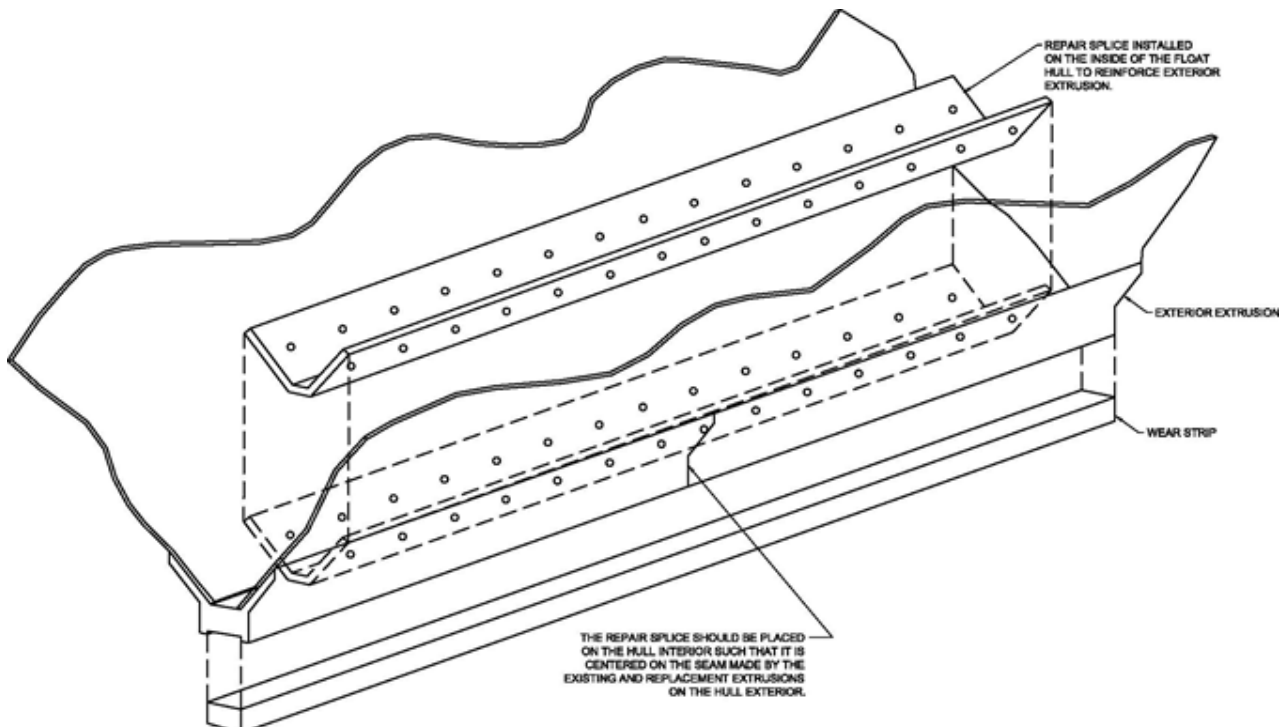


FIGURE 5.6-5: MAIN KEEL SIMPLE EXTRUSION SPLICE REPAIR

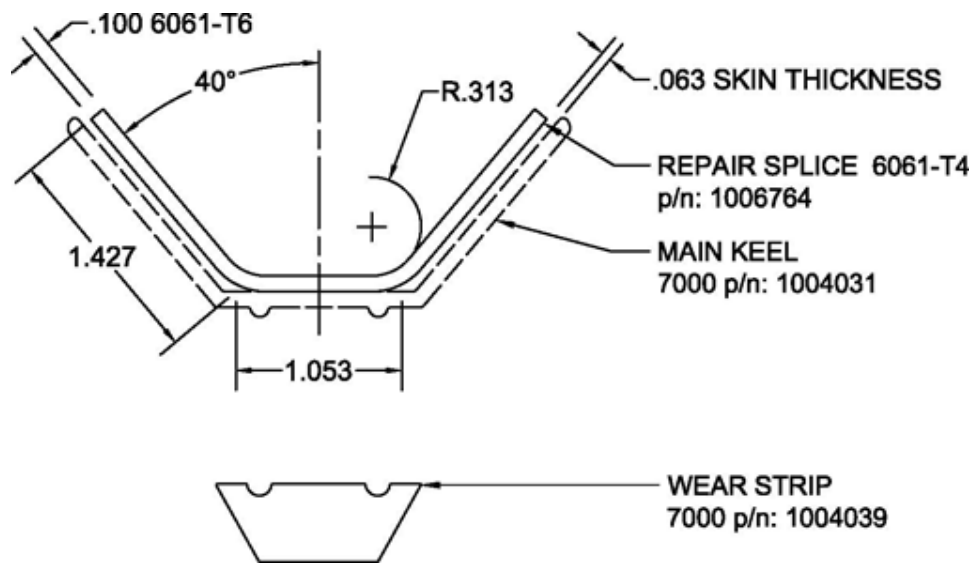


FIGURE 5.6-6: 7000 MAIN KEEL REPAIR

5.7 8000 FLOAT EXTRUSION REPAIRS

5.7.1 SIMPLE EXTRUSION SPLICE REPAIR

The most used and simplest repair is a splice of an extrusion that is a simple one bend angle where the skins attach to each flange. Figure 5.7-1 depicts the general method of this splice repair. The replacement extrusion can be purchased from Wipaire, or in some cases, fabricated per the figures in this section. The internal splices may either be purchased from Wipaire or fabricated per the figures in this section. Consult the Table of Contents at the beginning of this manual to locate applicable figures for your repair.

Repair Process:

1. Remove rivets (if applicable) about 6-8" on either end of the area to be repaired.
2. Mark damaged area to be removed.
 - a. Be sure to start and end spliced area in the centers of the float bays to prevent interference with the bulkheads or bottom stiffeners.
3. Cut out damaged section being careful NOT to cut into the skins.
4. Obtain new extrusion from Wipaire Parts Department. Cut the repair section from the new extrusion in the exact area of the damage.
5. File to remove rough edges.
6. See Section 3.0 of this manual for appropriate fastener options.
7. Add internal splices (1001073), making sure the repair seam is located in the middle of the splice, and that the splice is centered between the bulkheads. Use existing piece to back drill holes for attachment making sure the distance from the end of the splice to the center of the first hole is greater than or equal to 2 times the diameter of the rivet used.

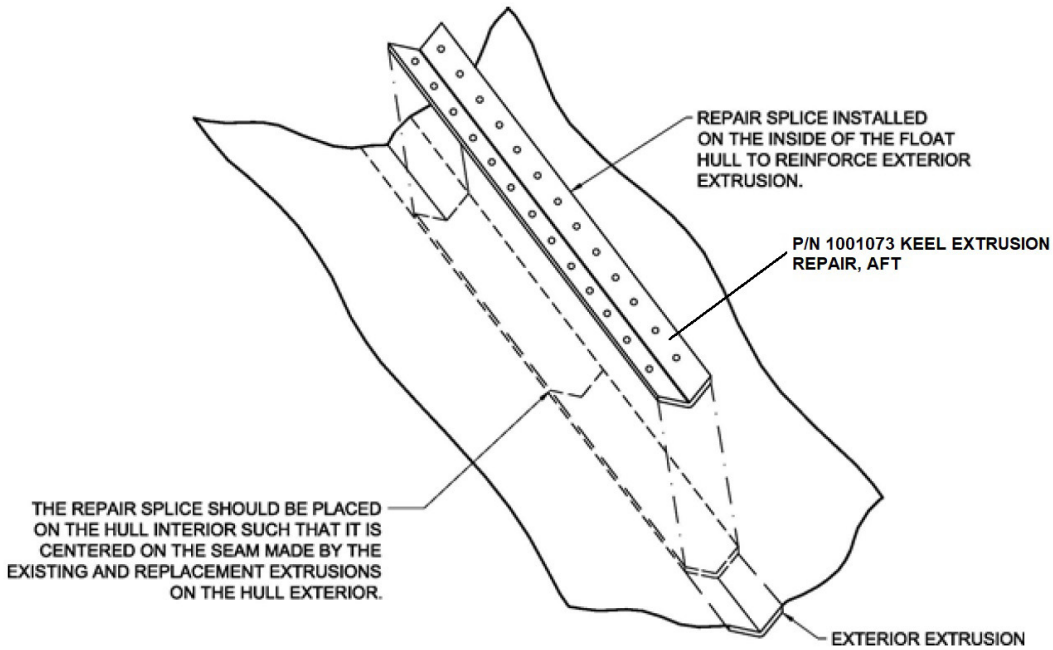


FIGURE 5.7-1: SIMPLE EXTRUSION SPLICE REPAIR

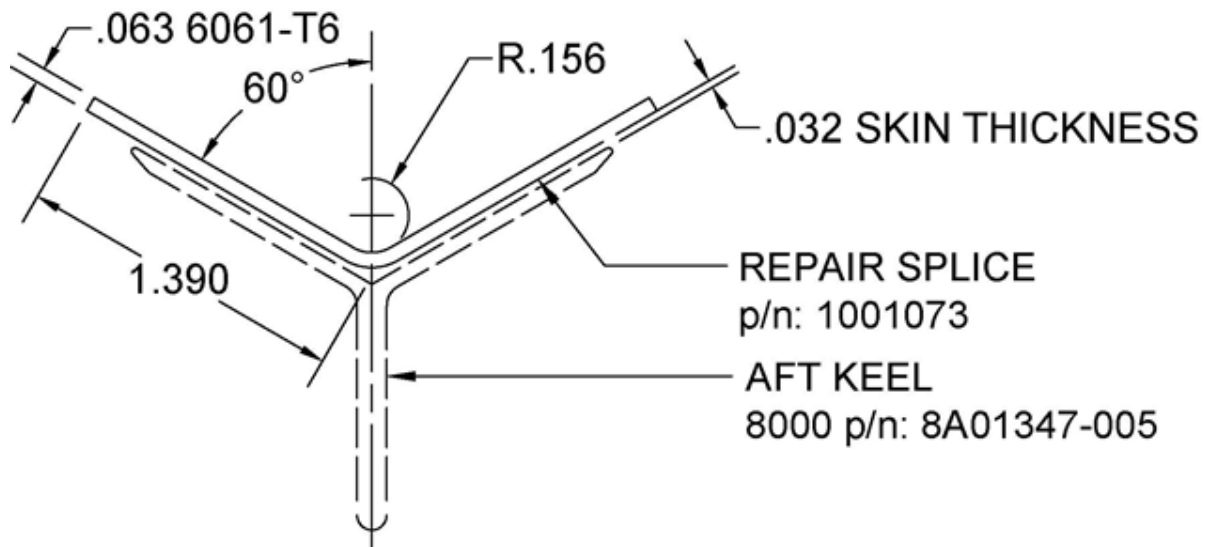


FIGURE 5.7-2: 8000 AFT KEEL REPAIR

5.7.2 COMPLEX EXTRUSION SPLICE REPAIR

The 3730/3900, 4000, 6000, and 8000 float models utilize complex extrusions with channels on each flange into which the skins are inserted. Figure 5.7-3 depicts the general method of this splice repair. The replacement extrusions and wear strips can be purchased from the Wipaire Parts Department. Consult Table 5.7-1 below to locate applicable part numbers for your repair.

Repair Process:

1. Remove the damaged area. On the remaining extrusion, cut out 3" of the outer layer of the extrusion as shown in Figure 5.7-3 so it can receive the repair piece.
2. Purchase the repair part from Wipaire. The repair part will be pre-cut and machined from the factory so only the outside layer of the extrusion remains for 3" at the end and the repair piece will notch together with the existing keel.
3. Fasten the 2 pieces together in the overlapping area using AN426AD5 c'sunk rivets spaced per Figure 5.7-3.
4. If repairing the Main Keel, finish repair by installing a new Wear Strip which can be purchased from Wipaire.
 - a. Position wear strip over main keel
 - b. Drill #29 diameter hole no more than 7/16" deep, close to each end and between each bulkhead (use old wear strip for approximate locations).
 - c. Tap main keel with 8-32 bottoming tap
 - d. Drill wear strip to #17 dia hole and c'sink 100°
 - e. Apply float sealant PR-1422 or equivalent between strip and keel.
 - f. Secure strip to keel with AN507C832-8 screws.

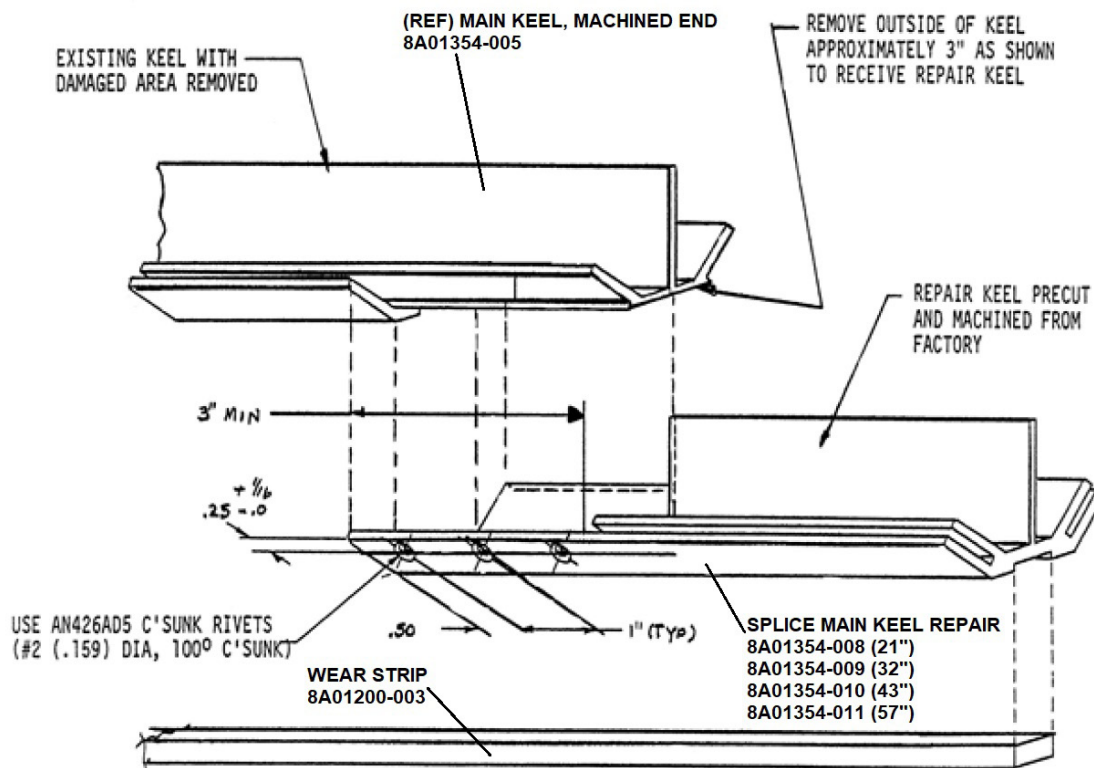
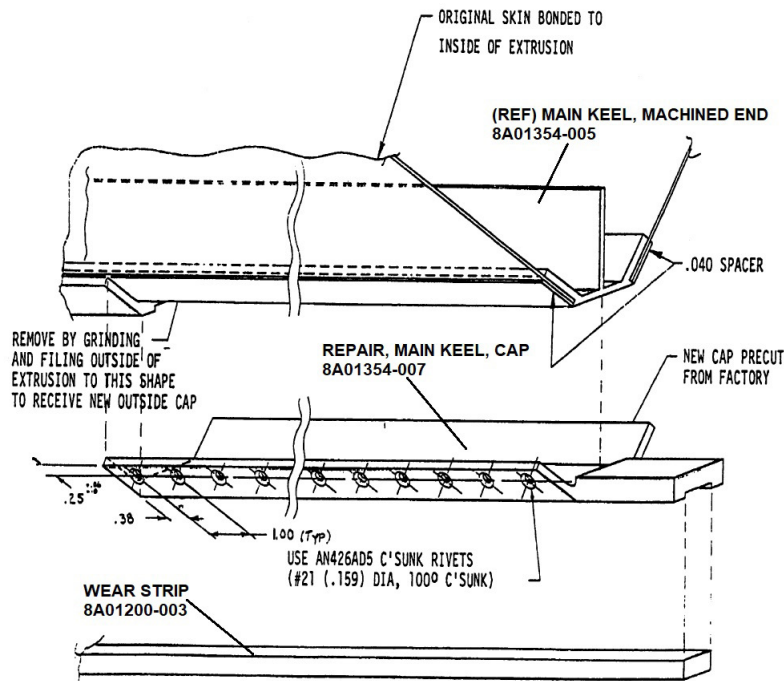


FIGURE 5.7-3: COMPLEX EXTRUSION SPLICE REPAIR



1. Lay out new repair cap on damaged extrusion.
2. Remove outside of damaged extrusion by filing or grinding to inside shape of repair cap.
3. Match drill or lay out and drill hole pattern as shown.
4. Rivet outside cap and spacer to existing inside extrusion.
5. Apply keel wear strip with any good 2-part epoxy.

TABLE 5.7-4: TYPICAL CAP SPLICE TO KEEL

5.8 8750 FLOAT EXTRUSION REPAIRS

5.8.1 SIMPLE EXTRUSION SPLICE REPAIR

The most used and simplest repair is a splice of an extrusion that is a simple one bend angle where the skins attach to each flange. Figure 5.8-1 depicts the general method of this splice repair. The replacement extrusion can be purchased from Wipaire, or in some cases, fabricated per the figures in this section. The internal splices may either be purchased from Wipaire or fabricated per the figures in this section. Consult the Table of Contents at the beginning of this manual to locate applicable figures for your repair.

Repair Process:

1. Remove rivets (if applicable) about 6-8" on either end of the area to be repaired.
2. Mark damaged area to be removed.
 - a. Be sure to start and end spliced area in the centers of the float bays to prevent interference with the bulkheads or bottom stiffeners.
3. Cut out damaged section being careful NOT to cut into the skins.
4. Obtain new extrusion from Wipaire Parts Department. Cut the repair section from the new extrusion in the exact area of the damage.
5. File to remove rough edges.
6. See Section 3.0 of this manual for appropriate fastener options.

7. Add internal splices, making sure the repair seam is located in the middle of the splice, and that the splice is centered between the bulkheads.
8. Use existing piece to back drill holes for attachment making sure the distance from the end of the splice to the center of the first hole is greater than or equal to 2 times the diameter of the rivet used.

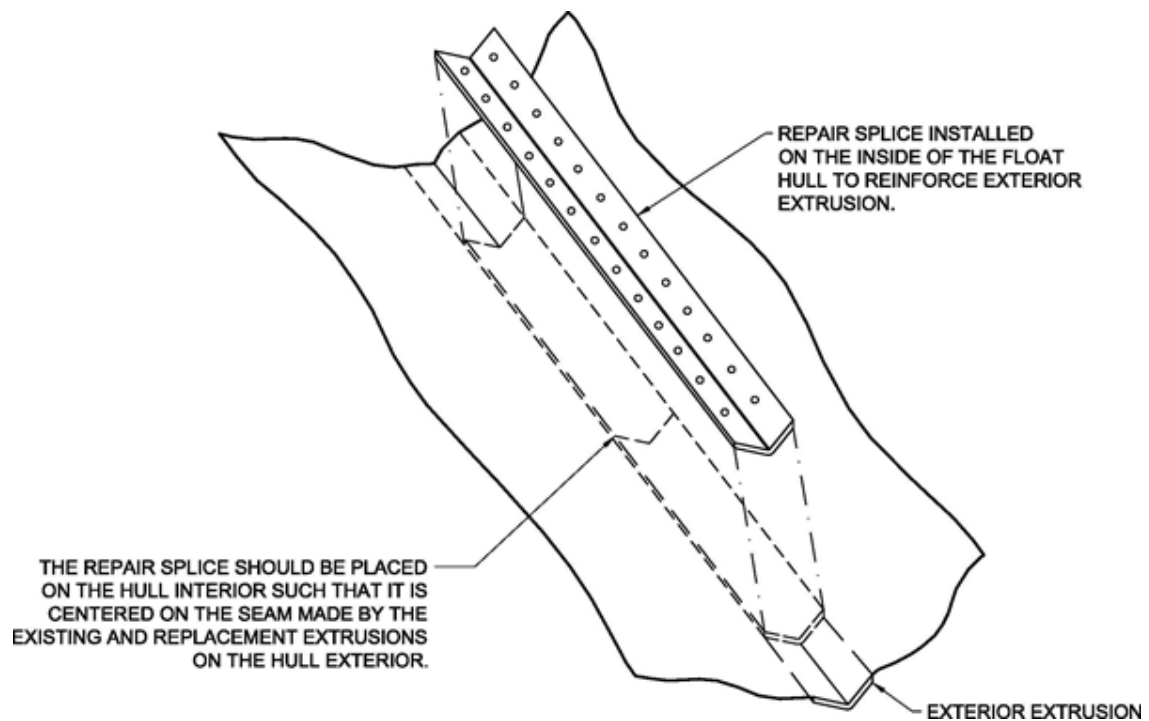


FIGURE 5.8-1: SIMPLE EXTRUSION SPLICE REPAIR

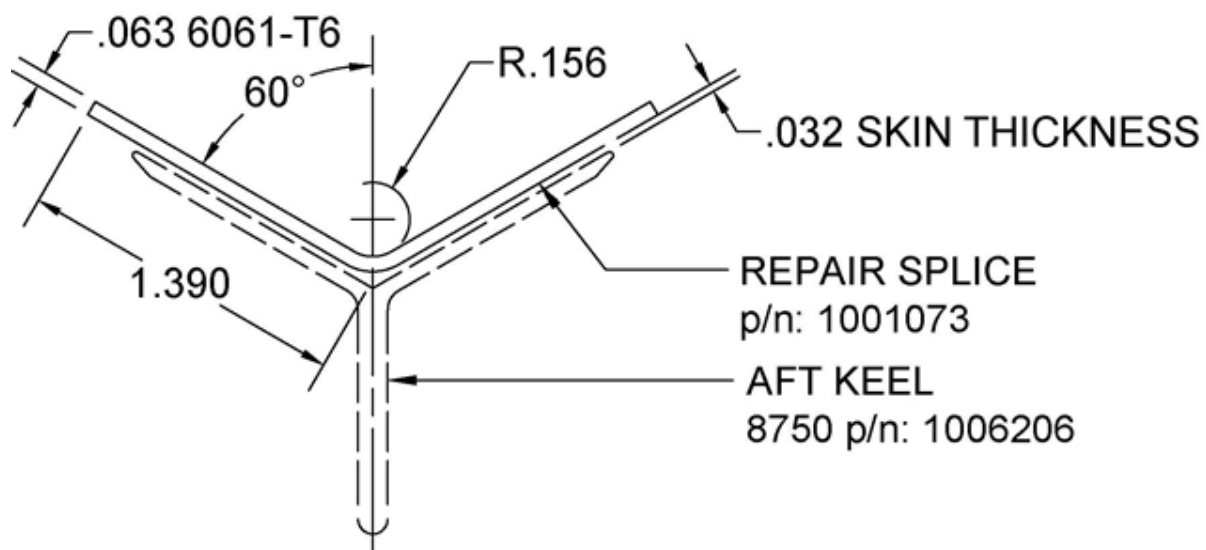


FIGURE 5.8-2: 8750 AFT KEEL REPAIR

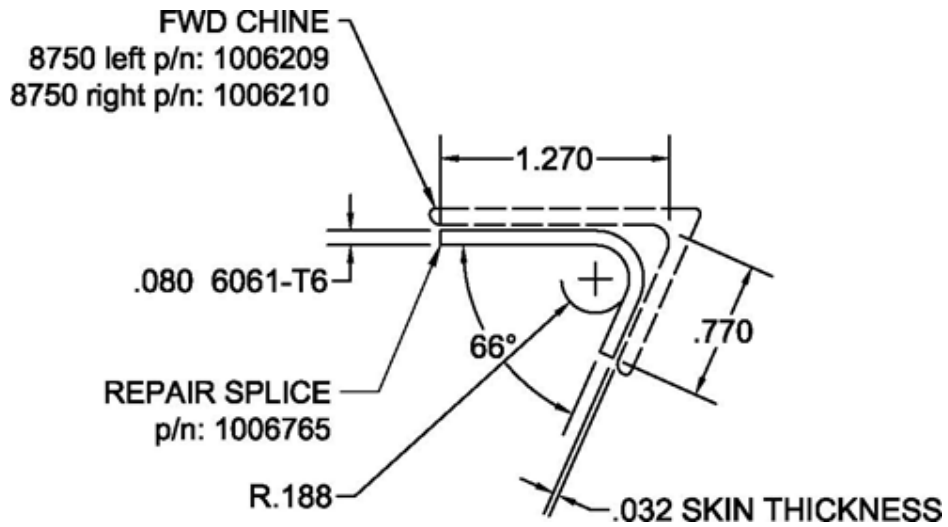


FIGURE 5.8-3: 8750 FWD CHINE REPAIR

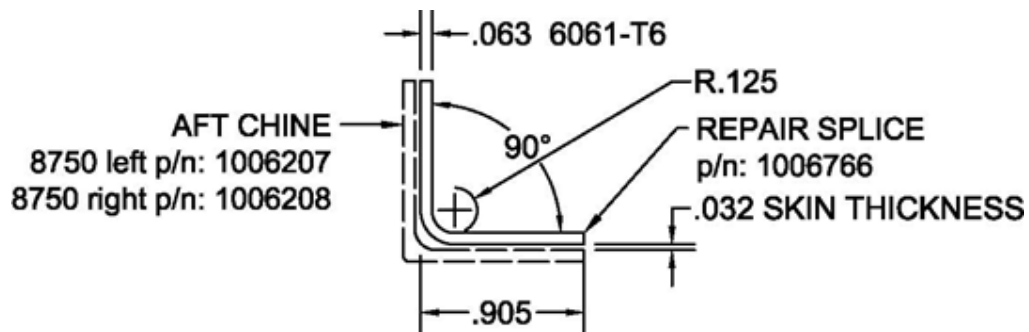


FIGURE 5.8-4: 8750 AFT CHINE REPAIR

5.8.2 MAIN KEEL EXTRUSION SPLICE REPAIR

On several float models, the main keel will have a flat bottom with an attached wear strip that must be replaced when repairs are made. Figure 5.8-5 depicts the general method of this splice repair. The replacement extrusion can be purchased from Wipaire, and the internal splices may either be purchased from Wipaire or fabricated per the figures in this section. Consult the Table of Contents at the beginning of this manual to locate applicable figures for your repair.

Repair Process:

1. Remove entire wear strip. Purchase new Wear Strip from Wipaire (1004039).
2. Remove rivets (if applicable) about 6-8" on either end of the area to be repaired.
3. Mark damaged area to be removed.
 - a. Be sure to start and end spliced area in the centers of the float bays to prevent interference with the bulkheads or bottom stiffeners.
4. Cut out damaged section being careful NOT to cut into the skins.
5. Obtain new extrusion from Wipaire Parts Department (1006213) and cut out the repair section from the new extrusion in the exact area of the damage.
6. File to remove rough edges.
7. See Section 3.0 of this manual for appropriate fastener options.
8. Add internal splices making sure the repair seam is located in the middle of the splice.
9. Install the new wear strip.
 - a. Position wear strip over main keel
 - b. Drill #29 dia. hole close to each end and between each bulkhead (use old wear strip for approximate locations).
 - c. Tap main keel to 8-32 thru
 - d. Drill wear strip to #17 dia. hole and c'sink 100°
 - e. Apply float sealant PR-1422 or equivalent between strip and keel.
 - f. Secure strip to keel with AN507C832-8 screws, AN960-8 washers, and AN365-832 nuts.

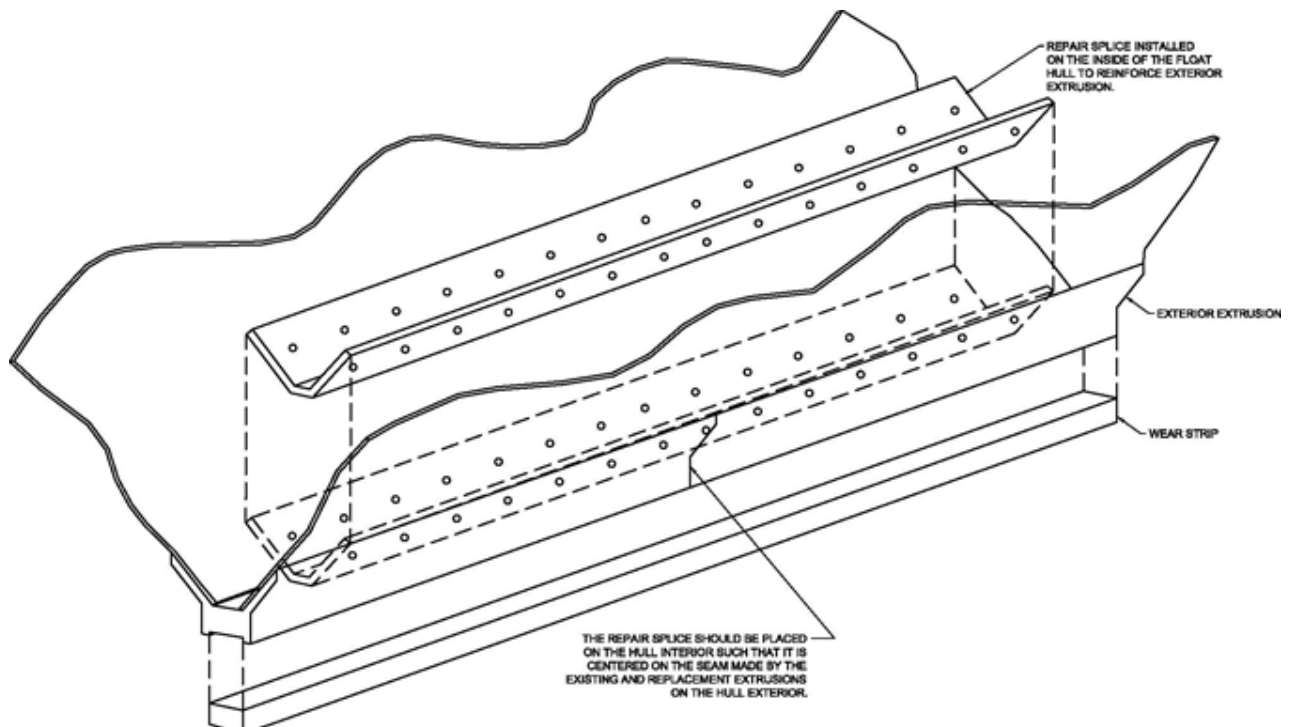


FIGURE 5.8-5: MAIN KEEL SIMPLE EXTRUSION SPLICE REPAIR

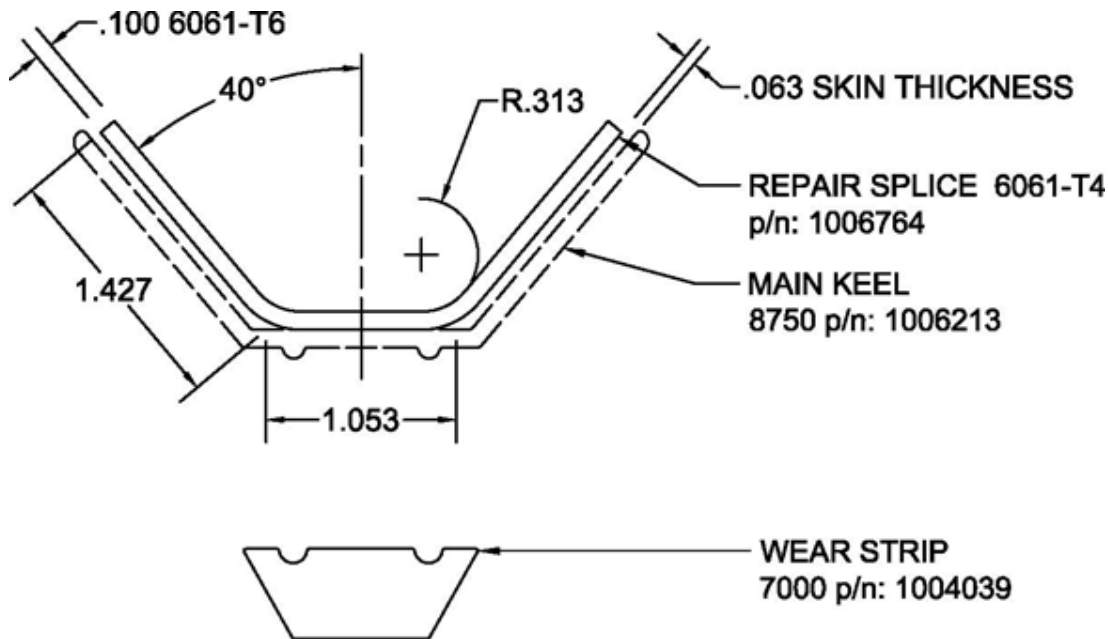


FIGURE 5.8-6: 8750 MAIN KEEL REPAIR

5.9 10000 FLOAT EXTRUSION REPAIRS

5.9.1 SIMPLE EXTRUSION SPLICE REPAIR

The most used and simplest repair is a splice of an extrusion that is a simple one bend angle where the skins attach to each flange. Figure 5.9-1 depicts the general method of this splice repair. The replacement extrusion can be purchased from Wipaire, or in some cases, fabricated per the figures in this section. The internal splices may either be purchased from Wipaire or fabricated per the figures in this section. Consult the Table of Contents at the beginning of this manual to locate applicable figures for your repair.

Repair Process:

1. Remove rivets (if applicable) about 6-8" on either end of the area to be repaired.
2. Mark damaged area to be removed.
 - a. Be sure to start and end spliced area in the centers of the float bays to prevent interference with the bulkheads or bottom stiffeners.
3. Cut out damaged section being careful NOT to cut into the skins.
4. Obtain new extrusion from Wipaire Parts Department. Cut the repair section from the new extrusion in the exact area of the damage.
5. File to remove rough edges.
6. See Section 3.0 of this manual for appropriate fastener options.
7. Add internal splices (1006762), making sure the repair seam is located in the middle of the splice, and that the splice is centered between the bulkheads.
8. Use existing piece to back drill holes for attachment making sure the distance from the end of the splice to the center of the first hole is greater than or equal to 2 times the diameter of the rivet used.

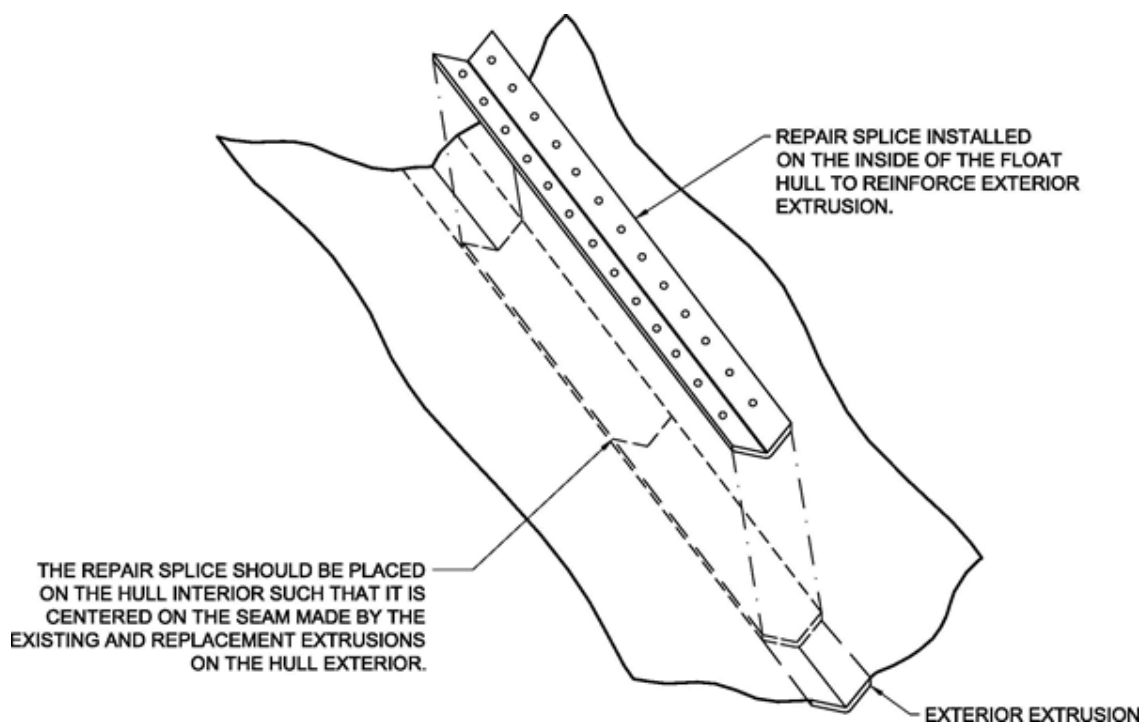


FIGURE 5.9-1: SIMPLE EXTRUSION SPLICE REPAIR

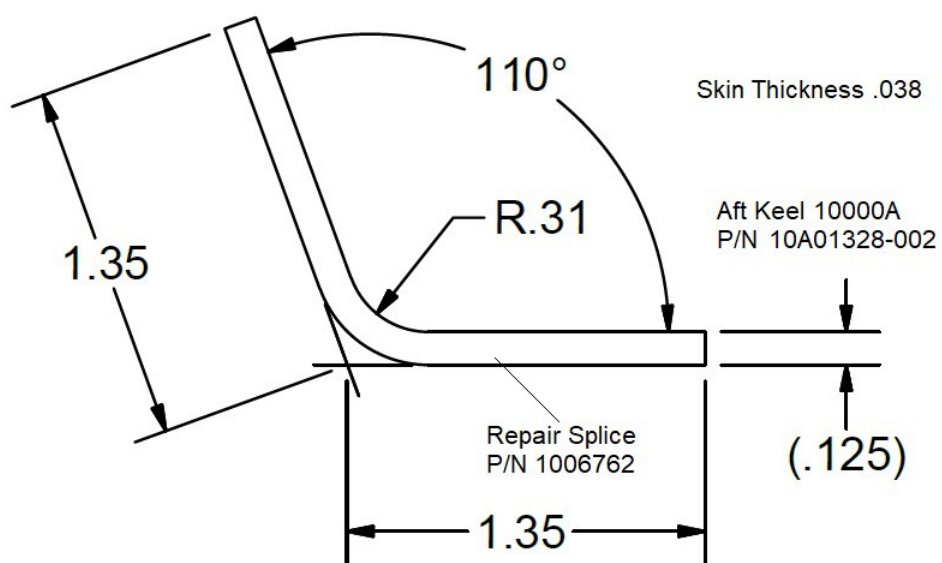


FIGURE 5.9-2: 10000 AFT KEEL REPAIR

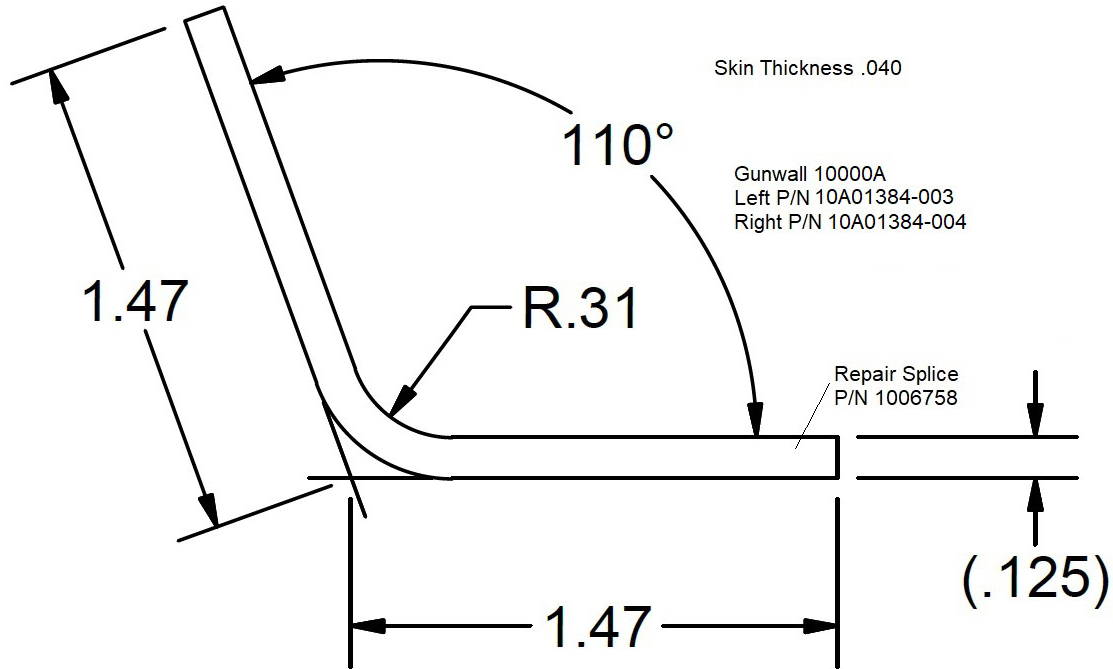


FIGURE 5.9-3: 10000 GUNWALL REPAIR

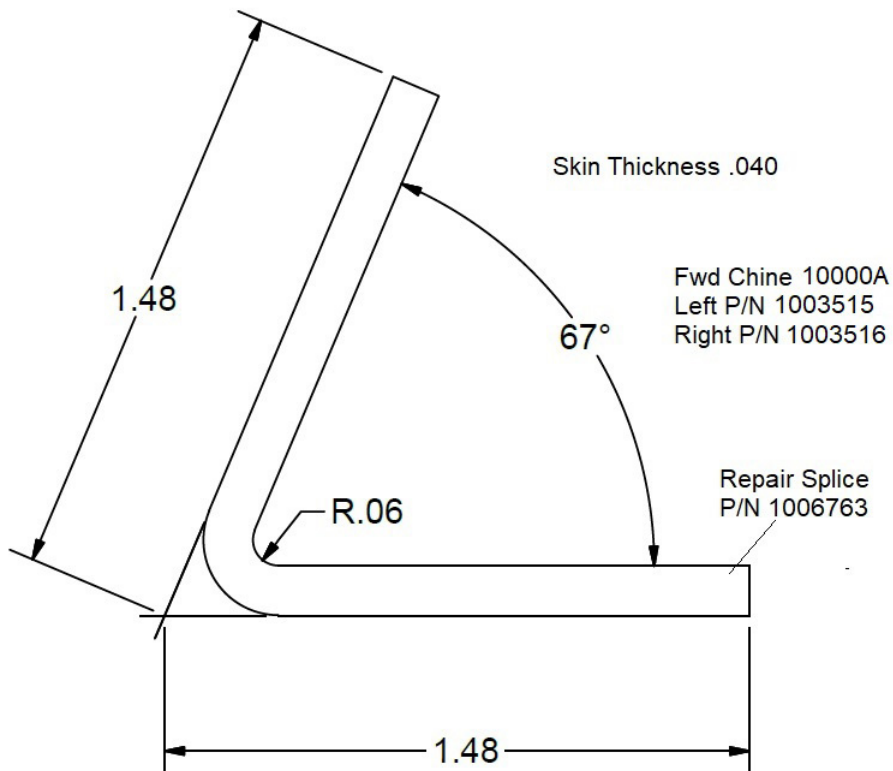
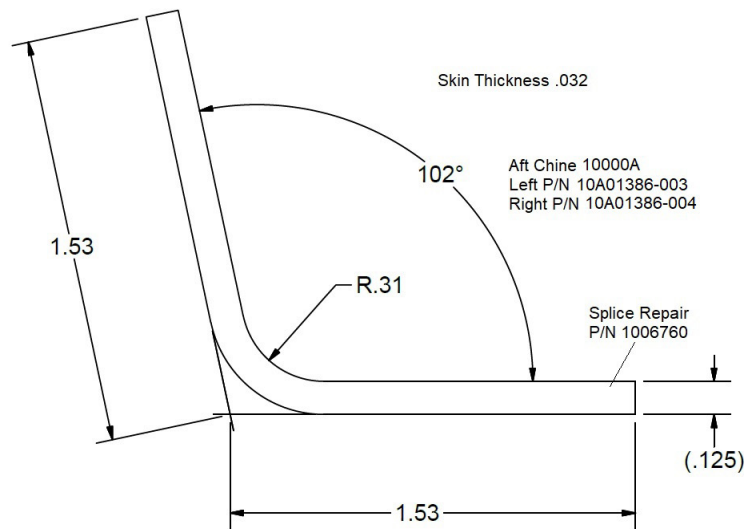


FIGURE 5.9-4: 10000 FWD CHINE REPAIR

**FIGURE 5.9-5: 10000 AFT CHINE REPAIR**

5.9.2 MAIN KEEL EXTRUSION SPLICE REPAIR

On several float models, the main keel will have a flat bottom with an attached wear strip that must be replaced when repairs are made. Figure 5.9-6 depicts the general method of this splice repair. The replacement extrusion can be purchased from Wipaire, and the internal splices may either be purchased from Wipaire or fabricated per the figures in this section. Consult the Table of Contents at the beginning of this manual to locate applicable figures for your repair.

Repair Process:

1. Remove entire wear strip. Purchase new Wear Strip from Wipaire (10A01388-002).
2. Remove rivets (if applicable) about 6-8" on either end of the area to be repaired.
3. Mark damaged area to be removed.
 - a. Be sure to start and end spliced area in the centers of the float bays to prevent interference with the bulkheads or bottom stiffeners.
4. Cut out damaged section being careful NOT to cut into the skins.
5. Obtain new extrusion from Wipaire Parts Department (10A01387-003), and cut out the repair section from the new extrusion in the exact area of the damage.
6. File to remove rough edges.
7. See Section 3.0 of this manual for appropriate fastener options.
8. Add internal splices making sure the repair seam is located in the middle of the splice.
9. Install the new wear strip.
 - a. Position wear strip over main keel
 - b. Drill #29 dia. hole close to each end and between each bulkhead (use old wear strip for approximate locations).
 - c. Tap main keel to 8-32 thru
 - d. Drill wear strip to #17 dia. hole and c'sink 100°
 - e. Apply float sealant PR-1422 or equivalent between strip and keel.
 - f. Secure strip to keel with AN507C832-8 screws, AN960-8 washers, and AN365-832 nuts.

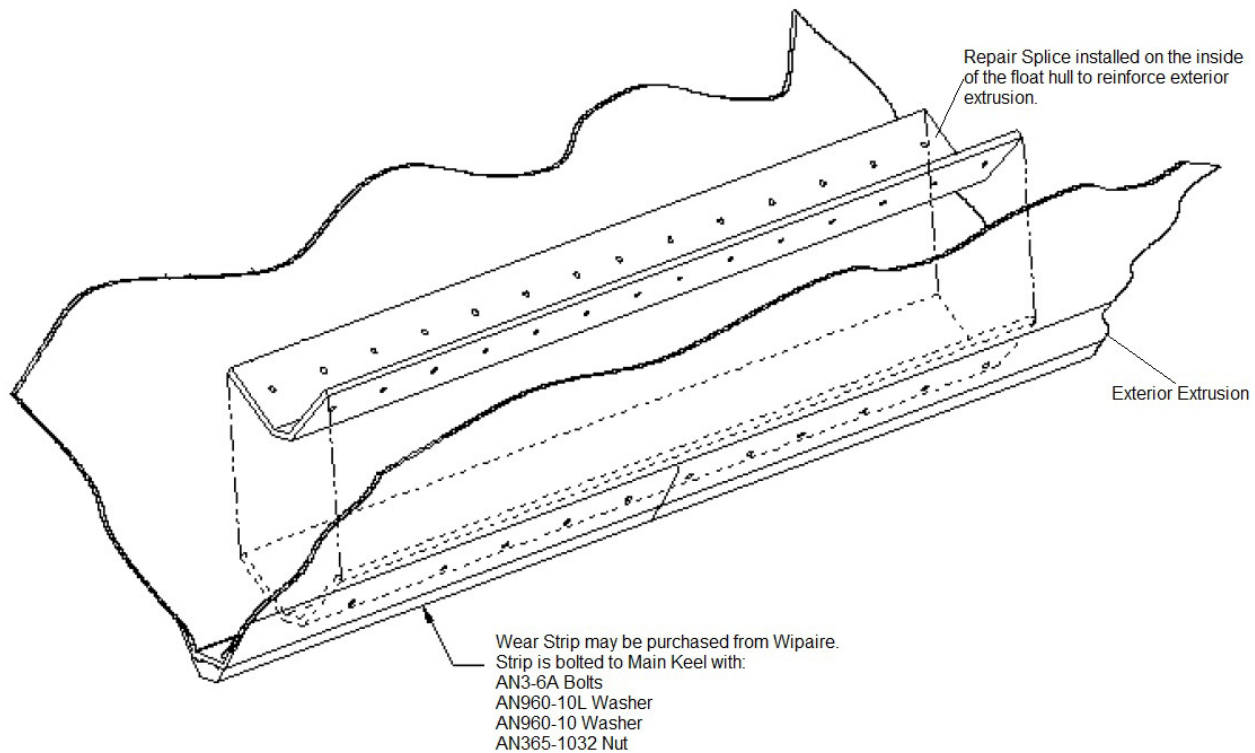


FIGURE 5.9-6: MAIN KEEL SIMPLE EXTRUSION SPLICE REPAIR

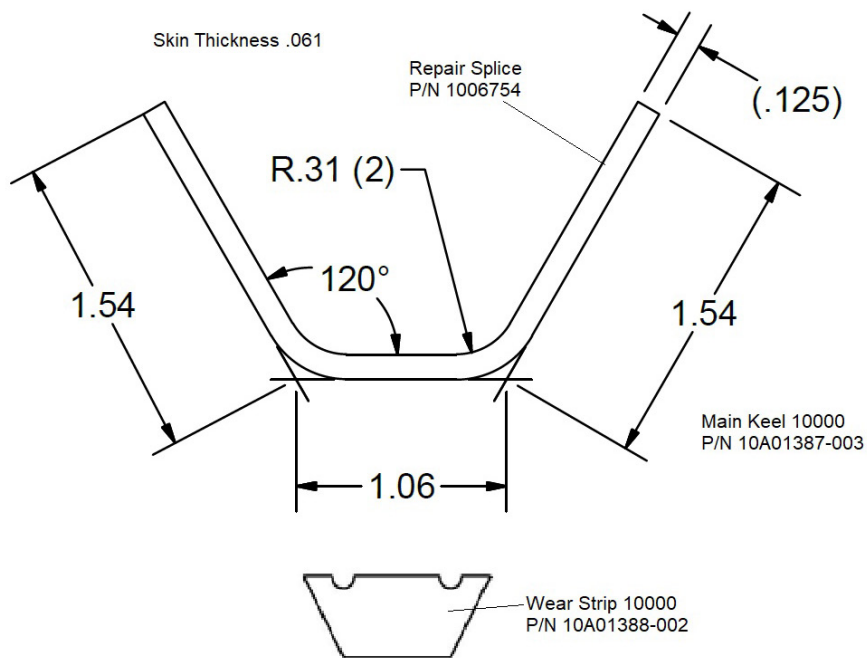


FIGURE 5.9-7: 10000 MAIN KEEL REPAIR

5.9.3 MAIN AND FRONT STRUT FITTING REPAIR

This repair scheme is to be used to repair the Ø.625" bolt holes on the main and front strut fittings when they have become larger than nominal. The fix should be considered optional for holes Ø.628"- Ø.645" and mandatory for holes over Ø.645."

1. Drill out the out of spec hole with a 47/64 drill bit.
2. Make or purchase bushing (1008698). Measure the outside diameter (OD) of the bushing. If making the bushing, it should be made from 2024-T3 with an OD of 0.75" +0, -.0005, an ID of 0.625" + .002, -0 and .990" ±.003 long with a .04"x45° chamfer on one end to help align with the hole when pushing it in.
3. Ream the hole with an adjustable hand reamer until the hole is .001" smaller than the bushings measured OD. It will be hard to press the bushing into the hole if the difference between the hole and the bushing is greater than .001. The bushing and hole should have an interference of .001.
4. Use a hand deburring tool to remove the sharp edges on the hole. Clean out the hole after reaming.
5. All bare aluminum will need to be degreased and alodine conversion coated as soon as possible after the machining operations.
6. Assembly of the bushing into the fitting will be done "wet" with a thin coat of polysulfide sealant or equivalent.
7. The bushing is designed with a chamfer to help start it into the hole. Make sure the bushing is pressed in chamfer first.
8. The bushing will be pressed flush with the surface of the fitting, a clamp or press should be used to squarely press the bushing into the hole.
9. After pressing the bushing in, the bushing may need to be reamed out to an inside diameter of .625" so the bolt will fit.
10. The bushing should be flush or recessed so that it does not interfere with the strut fitting upon assembly.
11. After installing the bushing, prime the area and apply a corrosion inhibiting compound prior to strut installation.

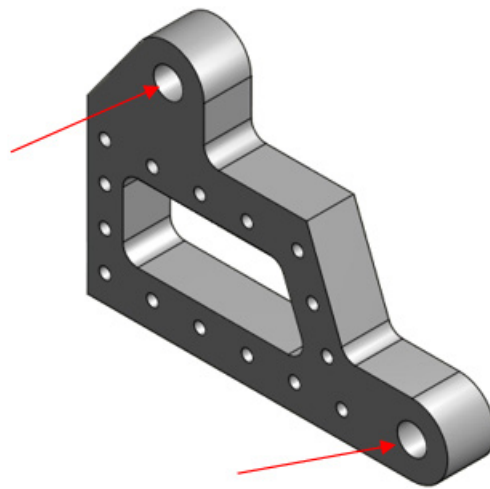


FIGURE 5.9-8: 10000 STRUT REPAIR FITTING 13A01085-001

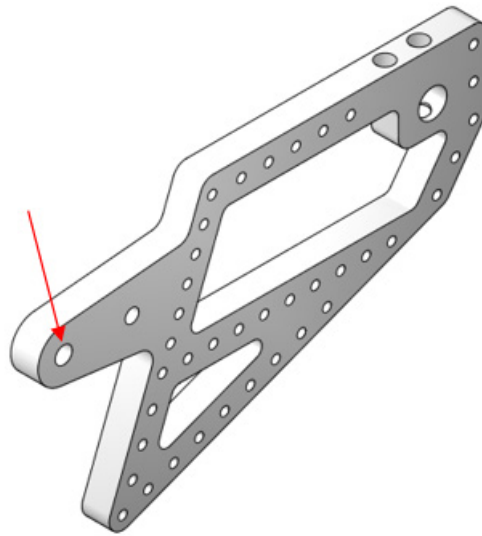


FIGURE 5.9-9: 10000 STRUT REPAIR FITTING 13A01161-002

5.10 13000 FLOAT EXTRUSION REPAIRS

5.10.1 SIMPLE EXTRUSION SPLICE REPAIR

The most used and simplest repair is a splice of an extrusion that is a simple one bend angle where the skins attach to each flange. Figure 5.10-1 depicts the general method of this splice repair. The replacement extrusion can be purchased from Wipaire, or in some cases, fabricated per the figures in this section. The internal splices may either be purchased from Wipaire or fabricated per the figures in this section. Consult the Table of Contents at the beginning of this manual to locate applicable figures for your repair.

Repair Process:

1. Remove rivets (if applicable) about 6-8" on either end of the area to be repaired.
2. Mark damaged area to be removed.
 - a. Be sure to start and end spliced area in the centers of the float bays to prevent interference with the bulkheads or bottom stiffeners.
3. Cut out damaged section being careful NOT to cut into the skins.
4. Obtain new extrusion from Wipaire Parts Department. Cut the repair section from the new extrusion in the exact area of the damage.
5. File to remove rough edges.
6. See Section 3.0 of this manual for appropriate fastener options.
7. Add internal splices (1006762), making sure the repair seam is located in the middle of the splice, and that the splice is centered between the bulkheads.
8. Use existing piece to back drill holes for attachment making sure the distance from the end of the splice to the center of the first hole is greater than or equal to 2 times the diameter of the rivet used.

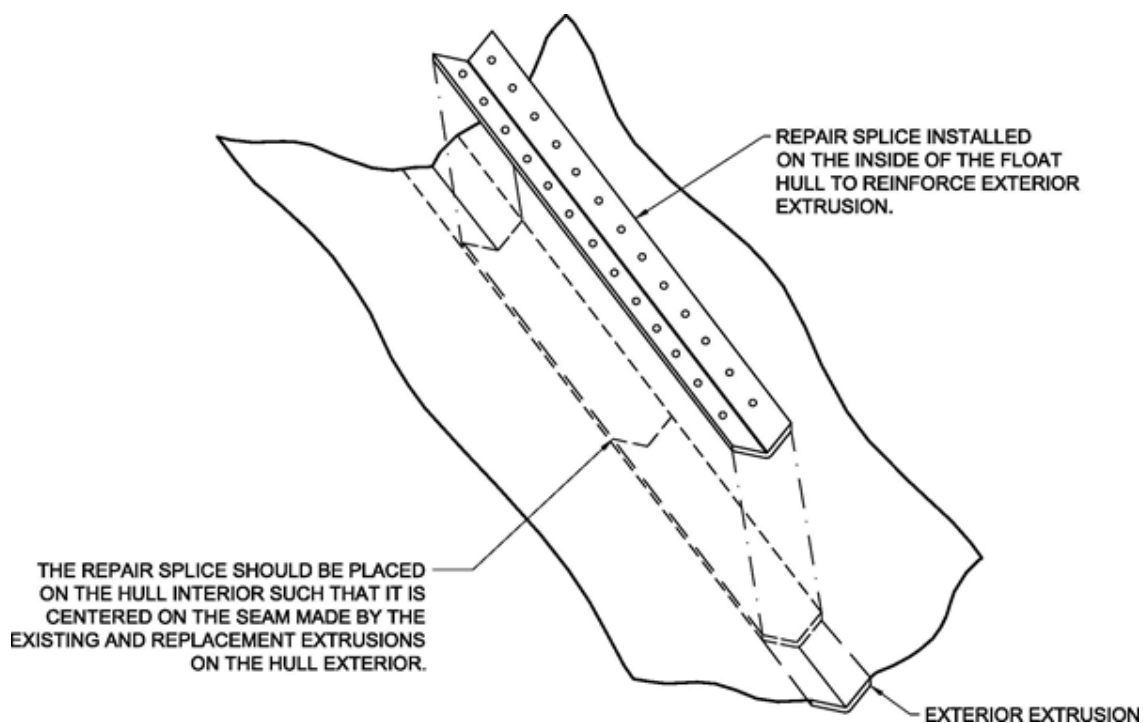


FIGURE 5.10-1: SIMPLE EXTRUSION SPLICE REPAIR

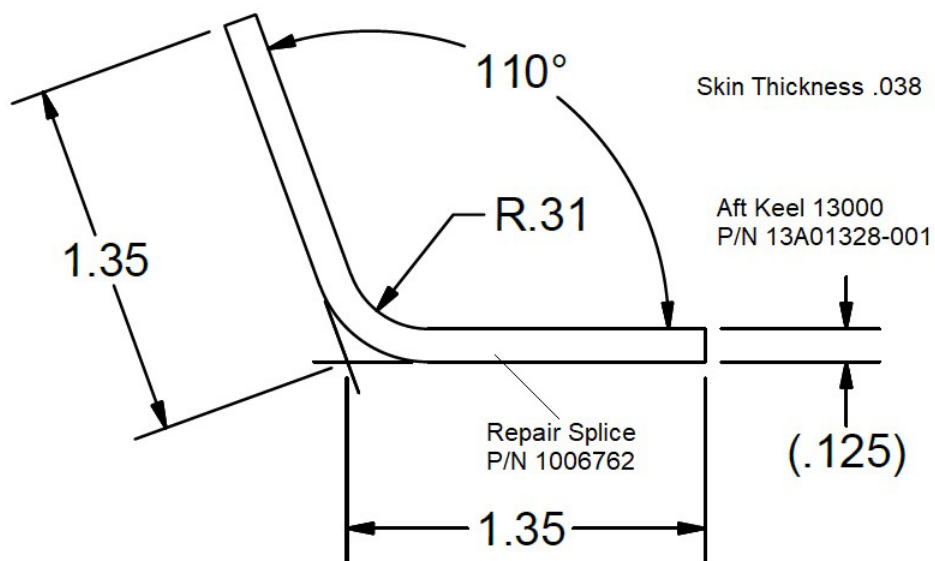


FIGURE 5.10-2: 13000 AFT KEEL REPAIR

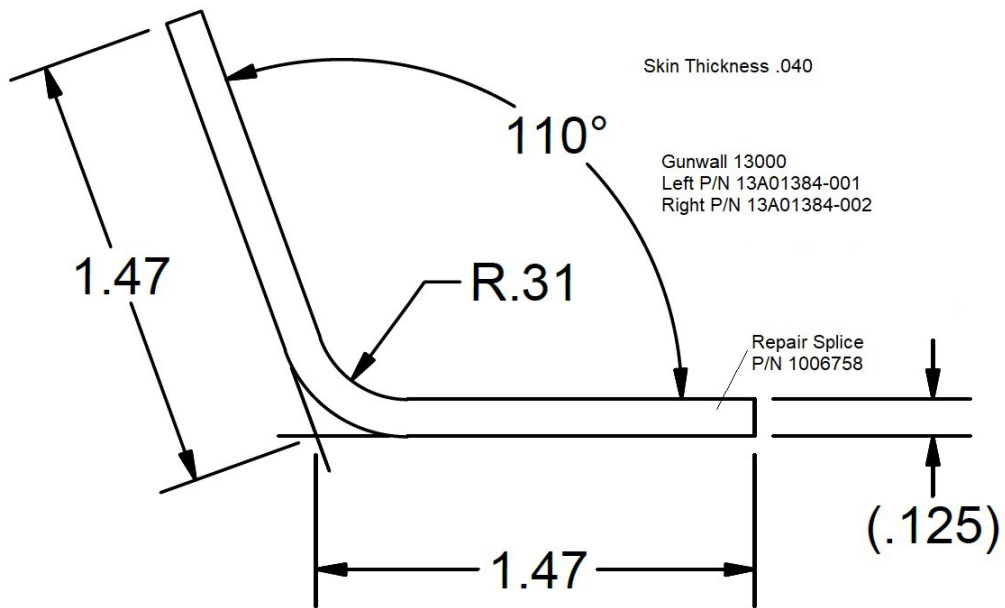


FIGURE 5.10-3: 13000 GUNWALL REPAIR

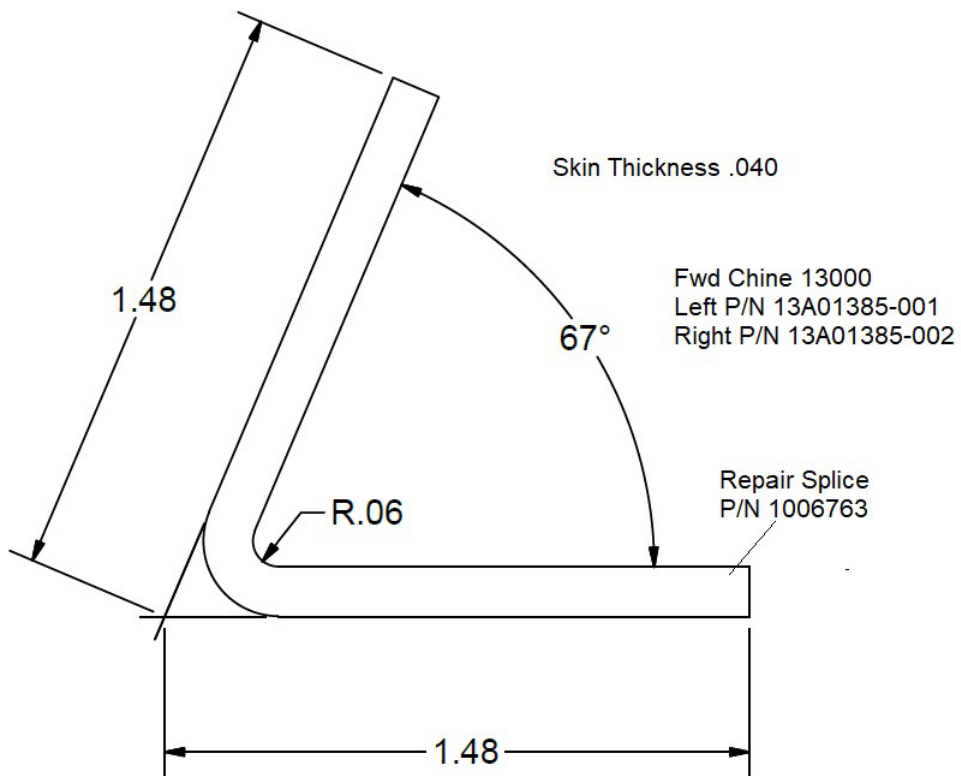


FIGURE 5.10-4: 13000 FWD CHINE REPAIR

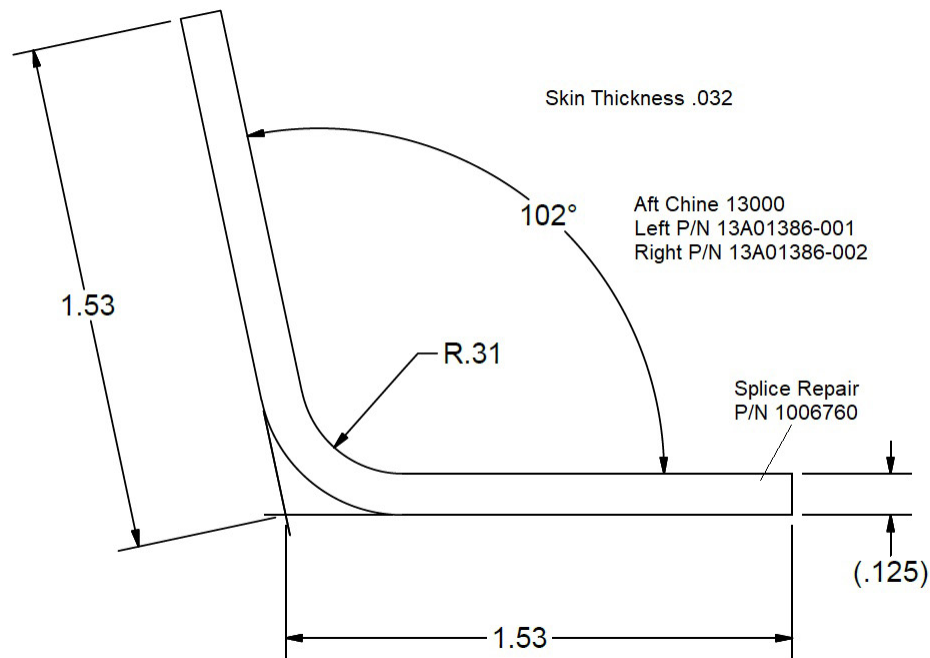


FIGURE 5.10-5: 13000 AFT CHINE REPAIR

5.10.2 MAIN KEEL EXTRUSION SPLICE REPAIR

On several float models, the main keel will have a flat bottom with an attached wear strip that must be replaced when repairs are made. Figure 5.10-6 depicts the general method of this splice repair. The replacement extrusion can be purchased from Wipaire, and the internal splices may either be purchased from Wipaire or fabricated per the figures in this section. Consult the Table of Contents at the beginning of this manual to locate applicable figures for your repair.

Repair Process:

1. Remove entire wear strip. Purchase new Wear Strip from Wipaire (13A01388-001).
2. Remove rivets (if applicable) about 6-8" on either end of the area to be repaired.
3. Mark damaged area to be removed.
 - a. Be sure to start and end spliced area in the centers of the float bays to prevent interference with the bulkheads or bottom stiffeners.
4. Cut out damaged section being careful NOT to cut into the skins.
5. Obtain new extrusion from Wipaire Parts Department (13A01387-001) for amphibian or (13S01387-004) for straight floats and cut out the repair section from the new extrusion in the exact area of the damage.
6. File to remove rough edges.
7. See Section 3.0 of this manual for appropriate fastener options.
8. Add internal splices making sure the repair seam is located in the middle of the splice.
9. Install the new wear strip.
 - a. Position wear strip over main keel
 - b. Drill #29 dia. hole close to each end and between each bulkhead (use old wear strip for approximate locations).
 - c. Tap main keel to 8-32 thru
 - d. Drill wear strip to #17 dia. hole and c'sink 100°
 - e. Apply float sealant PR-1422 or equivalent between strip and keel.
 - f. Secure strip to keel with MS24693-C50 screws, NAS1149F0832P washers, and MS 20365-832 nuts.

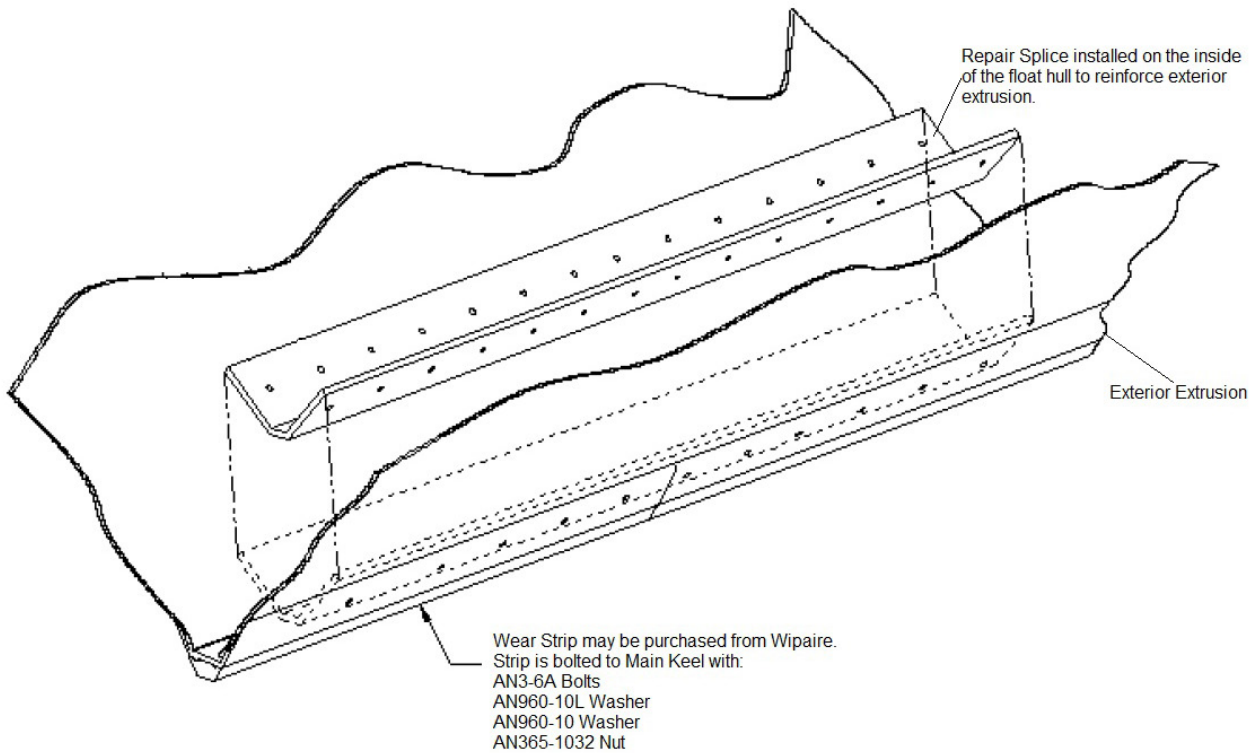


FIGURE 5.10-6: MAIN KEEL SIMPLE EXTRUSION SPLICE REPAIR

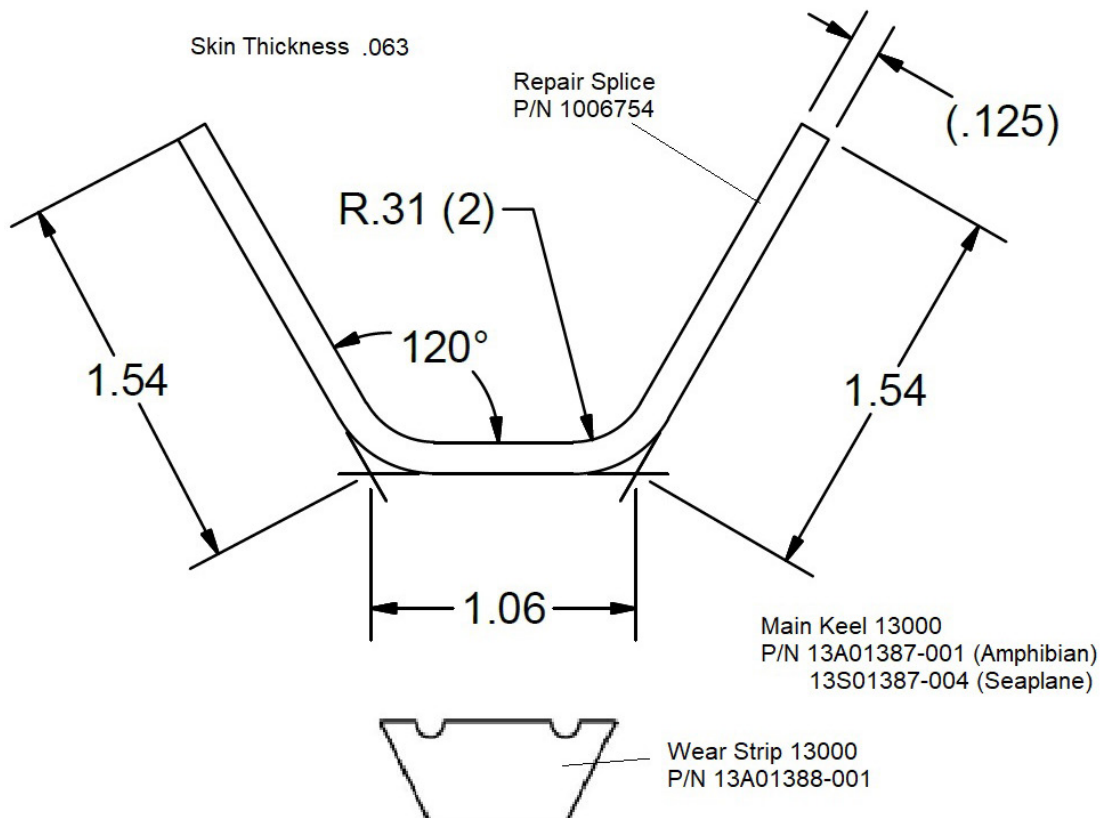


FIGURE 5.10-7: 13000 MAIN KEEL REPAIR

6.0 FLOAT HULL BULKHEADS

Float hull bulkheads are the vertical structures that internally divide the floats into bays. Bulkheads add strength to the float structure and keep water contained to one bay in the event of a leak. Bulkheads are constructed either of 6061-T6 or 2024-T3 aluminum and are riveted in place. They vary in size and thickness depending on the float model and location within the float. Damage to any float bulkheads may be repaired in accordance with this section, Section 6.0 of this manual, or any acceptable repair method listed in FAA Advisory Circular 43.13-1B. Any float parts, including bulkheads, can be purchased from Wipaire. To simplify repairs, the sheet metal can be ordered precut and predrilled. Contact Wipaire Customer Service to order parts.

During extensive maintenance of 10000 and 13000 series floats, it may be desirable to cut an access hole in a solid bulkhead to enable replacement of neighboring float structure. This type of access hole can be cut and then repaired according to Figure 4-2 in Section 4 of this manual. This is only acceptable practice on the 10000 and 13000 series floats.

Repair of bulkheads of Wipline floats can be categorized into a few general methods based on the type of damage and bulkhead configuration.

Complete Bulkhead Replacement

This method is used when the bulkhead has sustained extensive damage and other repair methods within this manual are not feasible.

Partial Bulkhead Replacement

Partial bulkhead replacement is used when a bulkhead has sustained damage in a local area. Typically, a section of bulkhead is removed when cutting out the damaged area, requiring a new section of bulkhead.

Bulkhead Reinforcement

Bulkhead reinforcement is used when a crack is discovered that can be stop drilled and reinforced to prevent further cracking.

6.1 COMPLETE BULKHEAD REPLACEMENT

To replace a complete bulkhead, you must gain access to the bulkhead. This may include removing one side skin if no other access is available.

Gain access to the bulkhead by removing a side skin or opening a baggage compartment door.
Drill out all rivets and remove any fasteners attaching the bulkhead to the float structure.
Carefully examine the area for any additional hidden damage.
Install the new bulkhead using the same fasteners as original wherever possible.

6.2 PARTIAL BULKHEAD REPLACEMENT

Partial bulkhead replacements will vary depending on the scope of the repair. A properly repaired bulkhead will be as strong as the original.

Remove damaged area of bulkhead.

Cut partial bulkhead for installation large enough to allow for proper rivet edge distance.

6.3 BULKHEAD REINFORCEMENT

Carefully examine the cracked area for additional damage. Stop drill cracks to prevent further cracking. Determine the size of the reinforcement required based on the damaged area. The doubler should at least completely overlap the cracked area. Rivet spacing should match existing rivet spacing or be less.

6.4 BULKHEAD REPAIR

Carefully inspect the area that is requiring repair. Determine the original thickness and type of material being repaired. Determine the amount of original material that needs to be removed prior to repair. Use AC43.13-1B or later FAA approved revision for guidelines to determine the required size of the doubler. Rivet spacing should match existing rivet spacing or be less.

6.5 BULKHEAD BUCKLING AND CRACKING

6.5.1 BULKHEAD BUCKLING

Bulkhead buckling. Small bulkhead buckles are not a structural concern. These buckles occur due to local water impacts. When a bulkhead buckles, it actually makes the structure more able to take local water impact loads due to an increase in the local flexibility. This increased flexibility allows the structure to flex and absorb the water impact without damage to another float structure. For this reason, it is not a structural requirement to fix small bulkhead and flange buckles to maintain the structural integrity of the float.

6.5.2 BULKHEAD CRACKING

Cracking. The downside to bulkhead buckles is that they will eventually turn into cracks. Once a crack has started in a bulkhead it isn't going to stop. For this reason, any bulkhead buckles that have developed cracks should be addressed when discovered. Standard repair methodology for cracks should be employed. In the case of many Wipline floats it may be acceptable to cut off the bulkhead flange and rivet a new flange to the bulkhead. In other, more severe, cases it may be necessary to replace an entire bulkhead. This must be evaluated for each case as it is discovered. When repairing any cracks, the integrity of the sealed compartment must be met after the repair is conducted.