



WIPLINE FLOATS • SKIS • MODIFICATIONS • AIRCRAFT SALES  
AVIONICS • INTERIOR • MAINTENANCE • PAINT REFINISHING

## SERVICE LETTER 239

### Cessna 206 Hydraulic Pump Replacement on 4000A Floats

Aircraft Makes/Model(s):	Float Model(s):	Compliance: Optional	By: MAS
Textron Aviation 206 Series	4000A	Part Number: 1011956	Approved: DRH
		Date: 1/7/2026	Revision: B

### LOG OF REVISIONS

Revision	Description	Date
A	Initial release	9/21/2021
B	Addition of 12 volt pump replacement. Updated Background section. Added 1011956-02 Kit. Added images and work instructions.	1/7/2026

FAA approval has been obtained for technical data in this publication that affects STC or TSO design compliance.

#### EFFECTIVITY:

This service letter applies to Textron Aviation model 206 series with Wipline 4000 Amphibian Floats installed per STC SA1483GL.

#### COMPLIANCE:

Optional compliance

#### BACKGROUND:

Textron Aviation (Cessna) 206 Hydraulic Pump Assembly 24 VDC p/n 4A09000-081 has been discontinued. This service letter provides the option to replace it with pump p/n 1011955 for the 24 VDC. This service letter also contains instructions for replacing the hydraulic pump assembly on 12 VDC systems, using pump p/n: 1012886.

#### COMPLIANCE METHOD:

Install provided parts as shown in the Work Instruction section of this service letter.

#### APPROXIMATE SHOP HOURS:

The work instruction for this service letter will take approximately 8 labor hours.

#### WEIGHT AND BALANCE CHANGE:

.5 LBS, F.S. 159.30

#### WARRANTY INFORMATION:

This service letter does not include warranty for labor and parts.

#### TECHNICAL DATA:

Copies of this service letter, associated service kit (if applicable), float service manual, and float parts manual are available at [www.wipaire.com](http://www.wipaire.com).

1700 Henry Ave - Fleming Field (KSGS), South St. Paul, MN 55075

Phone: 651.451.1205 | Fax: 651.457.7858

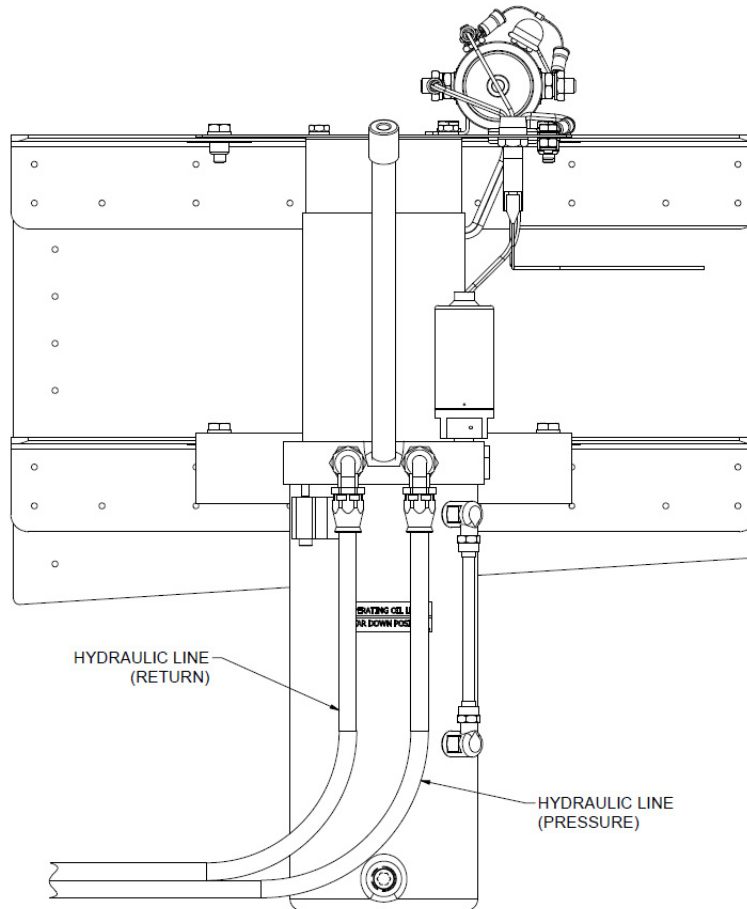
[www.wipaire.com](http://www.wipaire.com)

**ITEMS PROVIDED IN SERVICE KIT 1011956-01 (24 VDC HYDRAULIC PUMP)**

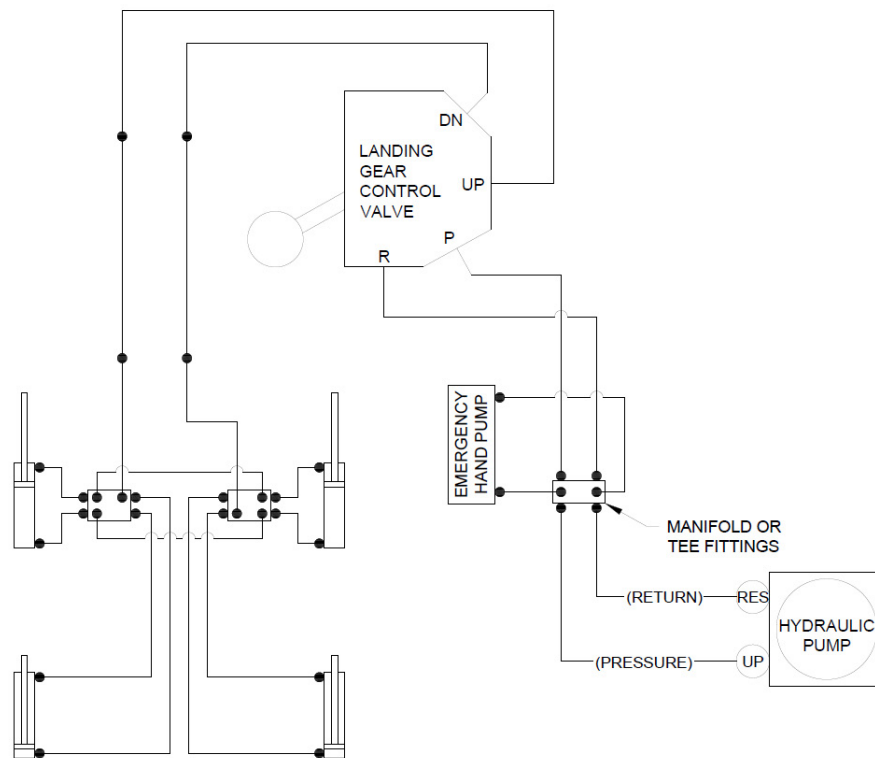
ITEM	QTY	PART NUMBER	DESCRIPTION
1	1	1011955	ASSEMBLY, HYDRAULIC POWER PACK, 24V
2	3 FT	22759-16-12-9	WIRE, 12 AWG, WHITE
3	1	320559	CRIMP TERMINAL, BUTT, 22-16 AWG
4	2	NAS1149F0432P	WASHER, .265 ID, .032 THK, STEEL
5	1	MS25036-112	RING TERMINAL, #10 STUD, 12-10 AWG, YELLOW
6	1	MS25036-157	RING TERMINAL, 1/4" STUD, 12-10 AWG, YELLOW

**ITEMS PROVIDED IN SERVICE KIT 1011956-02 (12 VDC HYDRAULIC PUMP)**

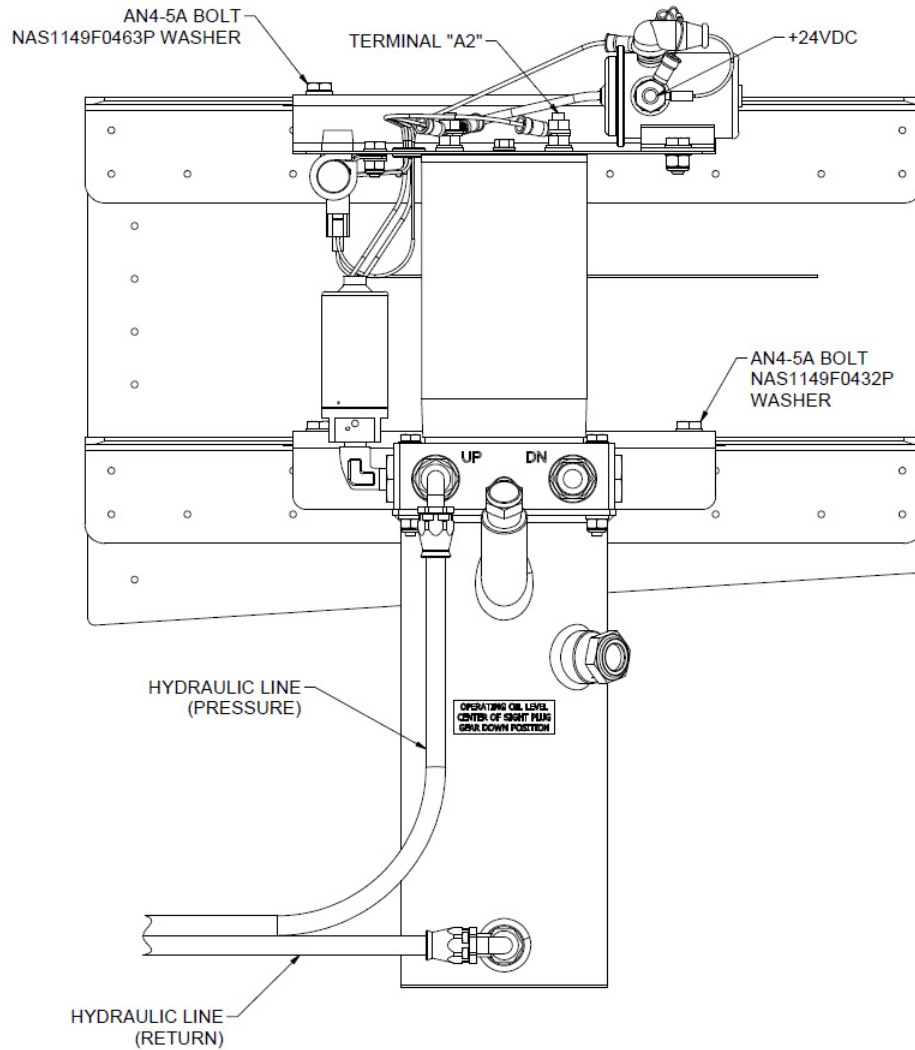
ITEM	QTY	PART NUMBER	DESCRIPTION
1	1	1012886	ASSEMBLY, HYDRAULIC POWER PACK, 12V
2	3 FT	22759-16-10-9	WIRE, 10 AWG, WHITE
3	1	320559	CRIMP TERMINAL, BUTT, 22-16 AWG
4	2	NAS1149F0432P	WASHER, .265 ID, .032 THK, STEEL
5	1	MS25036-112	RING TERMINAL, #10 STUD, 12-10 AWG, YELLOW
6	1	MS25036-157	RING TERMINAL, 1/4" STUD, 12-10 AWG, YELLOW



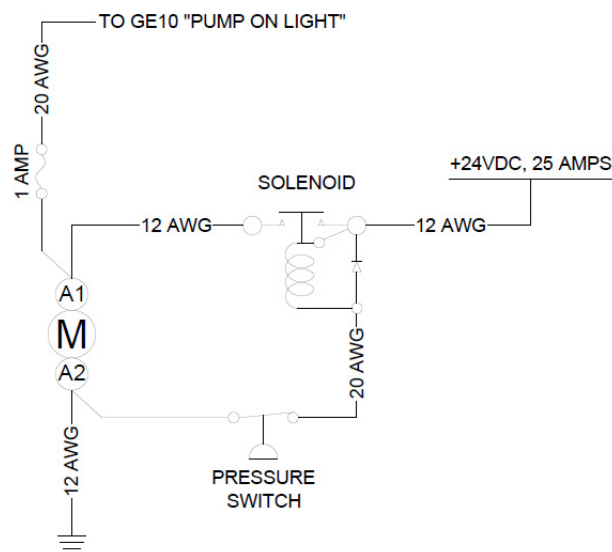
**DISCONTINUED OILDYNE HYDRAULIC PUMP 4A09000-081**



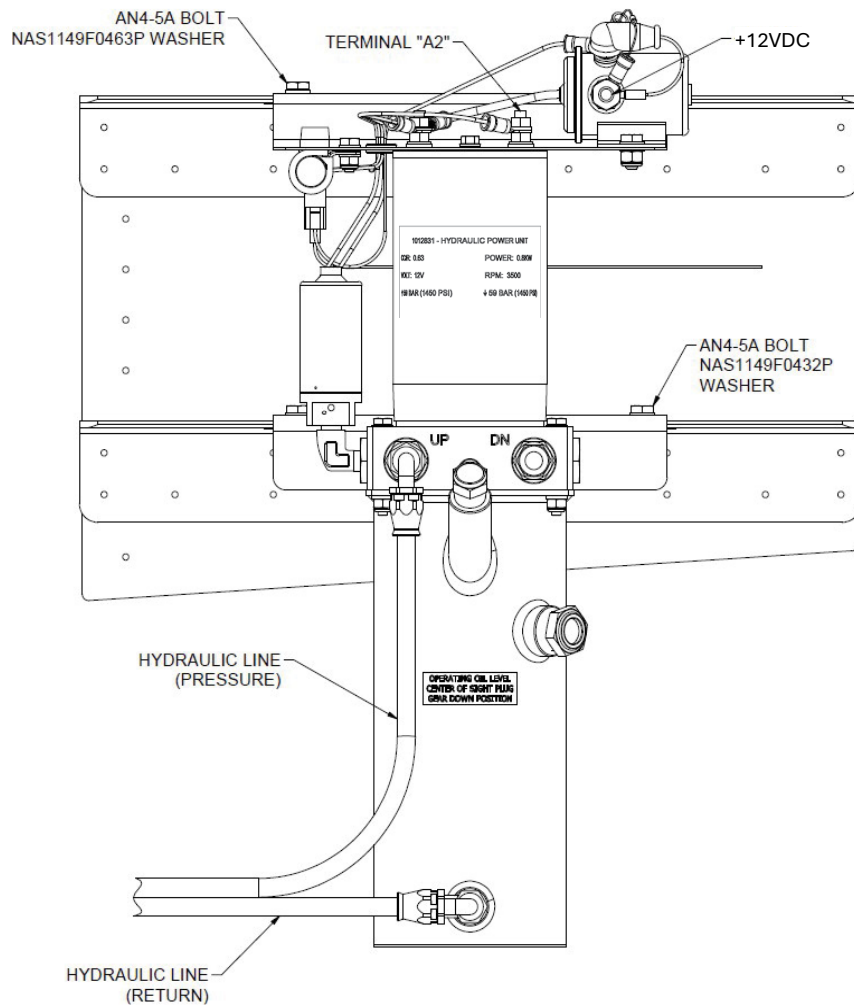
**HYDRAULIC SCHEMATIC**



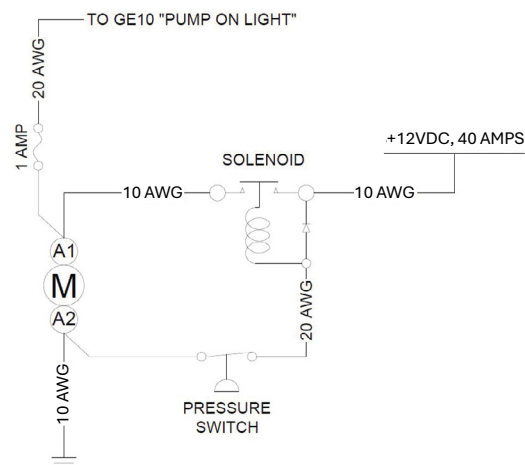
### NEW 24 VDC HYDRAULIC PUMP 1011955



### 24 VOLT ELECTRICAL SCHEMATIC



### NEW 12 VDC HYDRAULIC PUMP 1012886



### 12 VOLT ELECTRICAL SCHEMATIC

## Work Instructions

### 24 VDC Hydraulic Pump

1. Pull hydraulic pump circuit breaker.
2. Remove electrical wire from electrical solenoid that has 24VDC source.
3. If hydraulic pump has an electrical ground wire, remove from hydraulic pump assembly.
4. Cut wire from hydraulic pump fuse holder to "GE10" pump on light.
5. Note and remove both pressure and return lines from hydraulic pump assembly.
6. Unbolt upper bracket of hydraulic pump assembly from upper installation plate angle.
7. Unbolt and remove hydraulic pump assembly from lower installation plate angle.
8. Install new hydraulic pump assembly 1011955 onto installation plate. Use existing AN4-5A bolts with supplied NAS1149F0432P washers for lower bracket. Use existing AN4-5A bolts with existing NAS1149F0463P washers for upper bracket.
9. Install "pressure" hydraulic line into port "UP" of hydraulic pump assembly. See hydraulic schematic.
10. Install "return" hydraulic line into hydraulic fitting at bottom of hydraulic pump reservoir. See hydraulic schematic.
11. Make a ground wire from lug "A2" on hydraulic pump motor to aircraft ground with supplied 12 AWG wire and ring connectors. See electrical schematic.
12. Run the single open wire from hydraulic pump assembly fuse holder to "GE10" pump light on wire with supplied wire and electrical connectors. See electrical schematic.
13. Reset hydraulic pump circuit breaker, service reservoir with MIL-W-5606 hydraulic fluid and perform a retract/extension test to make sure system is functioning correctly. Watch the system for leaks and add MIL-H-5606 hydraulic fluid as needed.

## Work Instructions

### 12 VDC Hydraulic Pump

1. Pull hydraulic pump circuit breaker.
2. Remove electrical wire from electrical solenoid that has 12VDC source.
3. If hydraulic pump has an electrical ground wire, remove from hydraulic pump assembly.
4. Cut wire from hydraulic pump fuse holder to "GE10" pump on light.
5. Note and remove both pressure and return lines from hydraulic pump assembly.
6. Unbolt upper bracket of hydraulic pump assembly from upper installation plate angle.
7. Unbolt and remove hydraulic pump assembly from lower installation plate angle.
8. Install new hydraulic pump assembly 1012886 onto installation plate. Use existing AN4-5A bolts with supplied NAS1149F0432P washers for lower bracket. Use existing AN4-5A bolts with existing NAS1149F0463P washers for upper bracket.
9. Install "pressure" hydraulic line into port "UP" of hydraulic pump assembly. See hydraulic schematic.
10. Install "return" hydraulic line into hydraulic fitting at bottom of hydraulic pump reservoir. See hydraulic schematic.
11. Make a ground wire from lug "A2" on hydraulic pump motor to aircraft ground with supplied 10 AWG wire and ring connectors. See electrical schematic.
12. Run the single open wire from hydraulic pump assembly fuse holder to "GE10" pump light on wire with supplied wire and electrical connectors. See electrical schematic.

13. Reset hydraulic pump circuit breaker, service reservoir with MIL-W-5606 hydraulic fluid and perform a retractiextension test to make sure system is functioning correctly. Watch the system for leaks and add MIL-H-5606 hydraulic fluid as needed.

## **Aircraft Closing & Return to Service**

1. Upon completion of inspection, enter information in Aircraft Logbook for completion of Wipaire Service Letter 239.