

**INSTRUCTIONS FOR CONTINUED AIRWORTHINESS
FOR AN
EXECUTIVE INTERIOR INSTALLATION
IN
CESSNA AIRCRAFT COMPANY MODELS 208/208B**

WIPAIRE PART NUMBER: 1008402

DOCUMENT NUMBER: SU8003ICA

**INCLUDING
MAINTENANCE MANUAL
AIRWORTHINESS LIMITATIONS
ILLUSTRATED PARTS REFERENCE**

Revision C

THIS PAGE INTENTIONALLY LEFT BLANK

INSTRUCTIONS FOR CONTINUED AIRWORTHINESS
208/208B EXECUTIVE INTERIOR

LOG OF REVISIONS

Rev	Pages	Description	Date
A	All	Added Wipaire, Inc. letterhead and formatting to all pages.	2/8/2007
B	All	Added maintenance and descriptive data, changed header and footer, updated formatting.	6/27/2016
C	All	Updated format in new software. Removed plane specific registration and serial number from title page. Updated Maintenance Instructions.	6/13/2022

View most current revision of this ICA at www.wipaire.com. Installation drawing 1004845 must be employed with this ICAW. Service letters and additional information is maintained continuously at the website www.wipaire.com.

THIS PAGE INTENTIONALLY LEFT BLANK

TABLE OF CONTENTS

SECTION 1 - MAINTENANCE MANUAL	7
SECTION 2 - AIRWORTHINESS LIMITATIONS	19
SECTION 3 - ILLUSTRATED PARTS REFERENCE	21

LIST OF FIGURES

FIGURE 1 – SEATING CONFIGURATION -1 (SEE DRAWING 1004845).....	7
FIGURE 2 – SEATING CONFIGURATION -2 (SEE DRAWING 1004845).....	8
FIGURE 3 – SEATING CONFIGURATION -3 (SEE DRAWING 1004845).....	9
FIGURE 4 – SEATING CONFIGURATION -4 (SEE DRAWING 1004845).....	10
FIGURE 5 – SEATING CONFIGURATION -5 (SEE DRAWING 1004845).....	11
FIGURE 6 – SEATING CONFIGURATION -6 (SEE DRAWING 1004845).....	12
FIGURE 7 – SEATING CONFIGURATION -7, -10, -12, AND -15 (SEE DRAWING 1004845)	13
FIGURE 8 – SEATING CONFIGURATION -8, -9, -11, -13, AND -14 (SEE DRAWING 1004845).....	14

SECTION 1 - MAINTENANCE MANUAL

Description

This aircraft has been equipped with an executive seating system and interior per Wipaire, Inc. drawing number 1004845. This seating system installation allows for up to eight (8) each passenger seats and interior amenities between aircraft fuselage stations 158 and 308 for C208 aircraft, and between stations 158 and 356 for C208B aircraft. This Wipaire, Inc. executive seating installation is generally compatible with additional original equipment or aftermarket aft cabin seating systems, which may be installed in the cabin.

The Wipaire, Inc. Cessna 208/208B executive interior system approves installation of fifteen seating configurations, -1 through -15:

All 15 seating configurations are described and shown on the following pages.

See drawing 1004845, latest FAA approved revision for detailed information and depictions of each approved seating configuration.

Ensuring this compatibility is ultimately the responsibility of the STC installer, due to the wide range of cabin systems and seating options available. The installer must adhere to the seating and component installation configurations shown in the approved installation drawing(s).

Seating Configuration -1

Seating configuration -1 is comprised of four each club seats and a divan cabinet with two additional seats on top. Interior amenities include two each cabinets for storage, two each folding tables for the club seating. Additional stowage includes a drawer in the divan cabinet. Toilet attachment capability is also included in the divan cabinet.

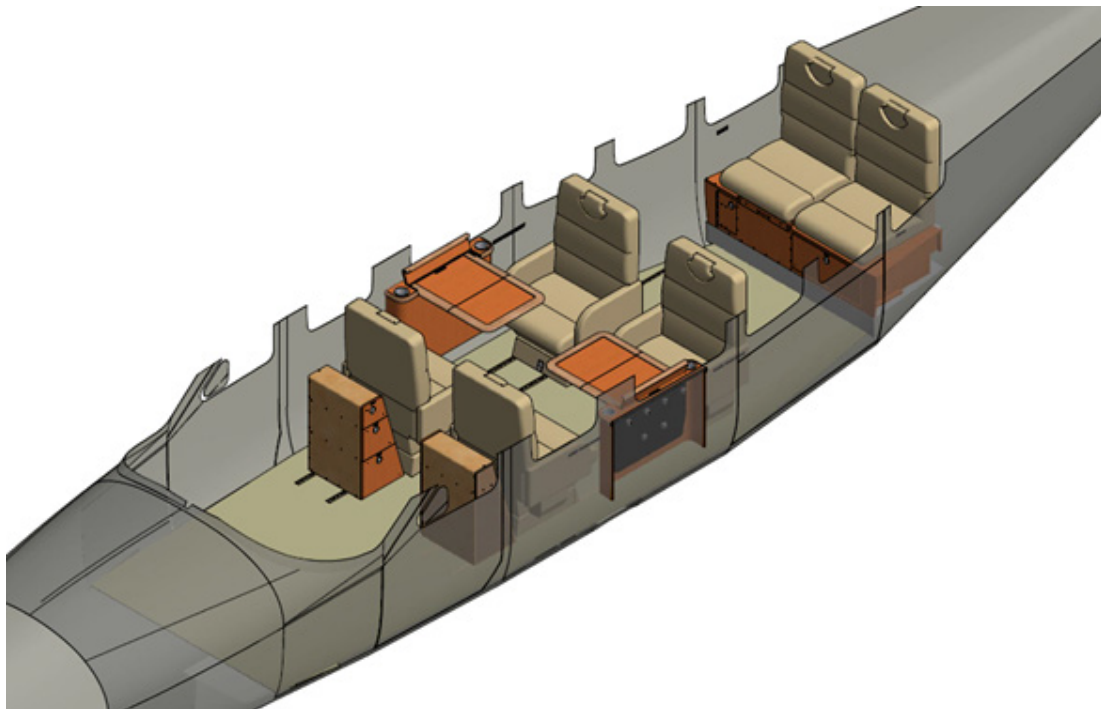


Figure 1 – Seating Configuration -1 (see drawing 1004845)

Seating Configuration -2

Seating configuration -2 is comprised of six each club seats and a divan cabinet with two additional seats on top. Additional stowage includes a drawer in the divan cabinet. Toilet attachment capability is also included in the divan cabinet.

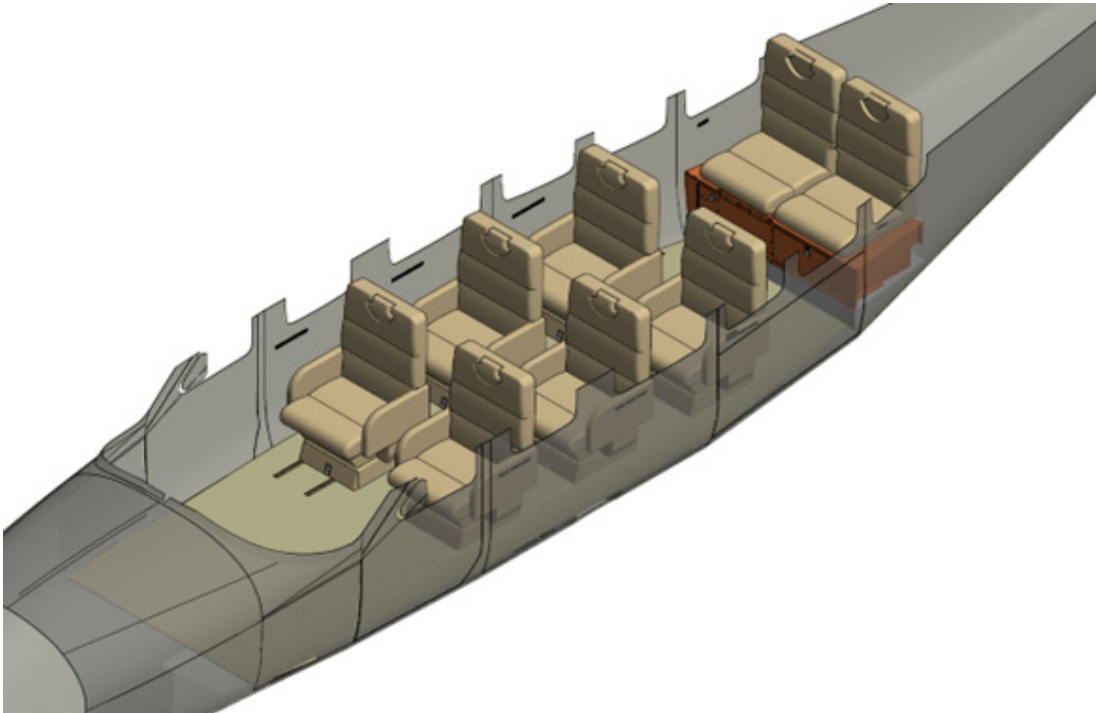


Figure 2 – Seating Configuration -2 (see drawing 1004845)

Seating Configuration -3

Seating configuration -3 is comprised of six each club seats and a divan cabinet with two additional seats on top. Interior amenities include two each cabinets for storage. Additional stowage includes a drawer in the divan cabinet. Toilet attachment capability is also included in the divan cabinet.

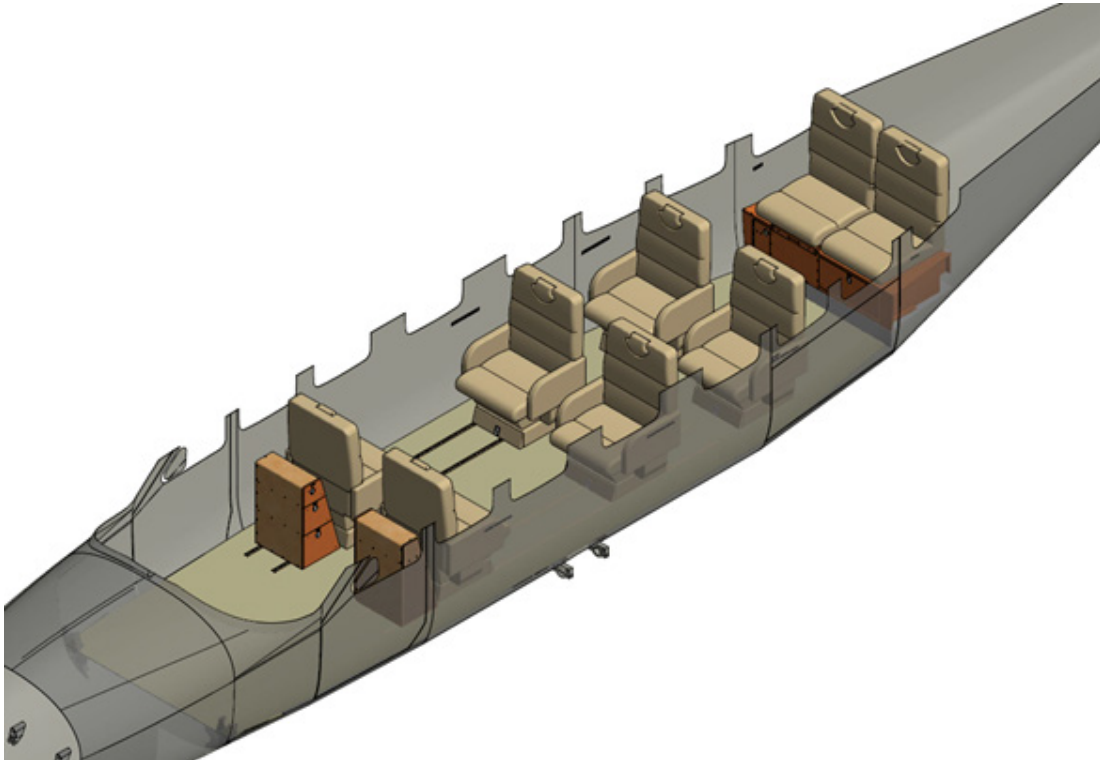


Figure 3 – Seating Configuration -3 (see drawing 1004845)

Seating Configuration -4

Seating configuration -4 is comprised of six each club seats and a divan cabinet with two additional seats on top. Interior amenities include two each cabinets for storage, two each folding tables for the club seating. Additional stowage includes a drawer in the divan cabinet. Toilet attachment capability is also included in the divan cabinet.

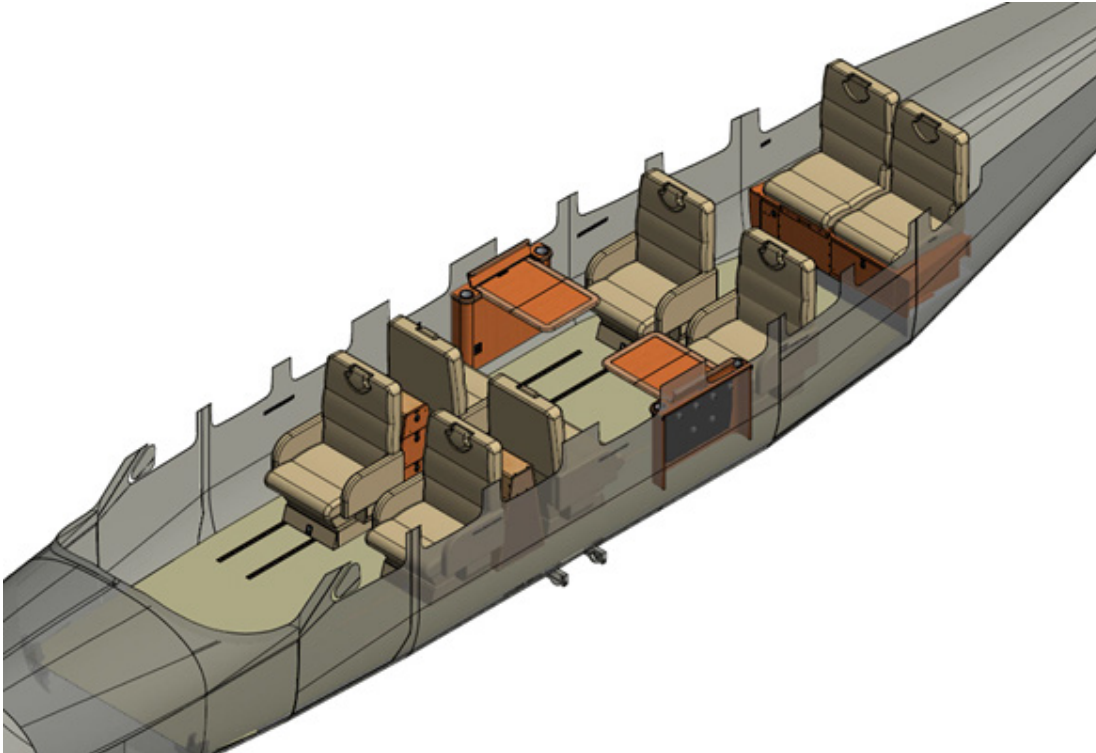


Figure 4 – Seating Configuration -4 (see drawing 1004845)

Seating Configuration -5

Seating configuration -5 is comprised of six each club seats and a divan cabinet with two additional seats on top. Interior amenities include two each cabinets for storage. Additional stowage includes a drawer in the divan cabinet. Toilet attachment capability is also included in the divan cabinet.

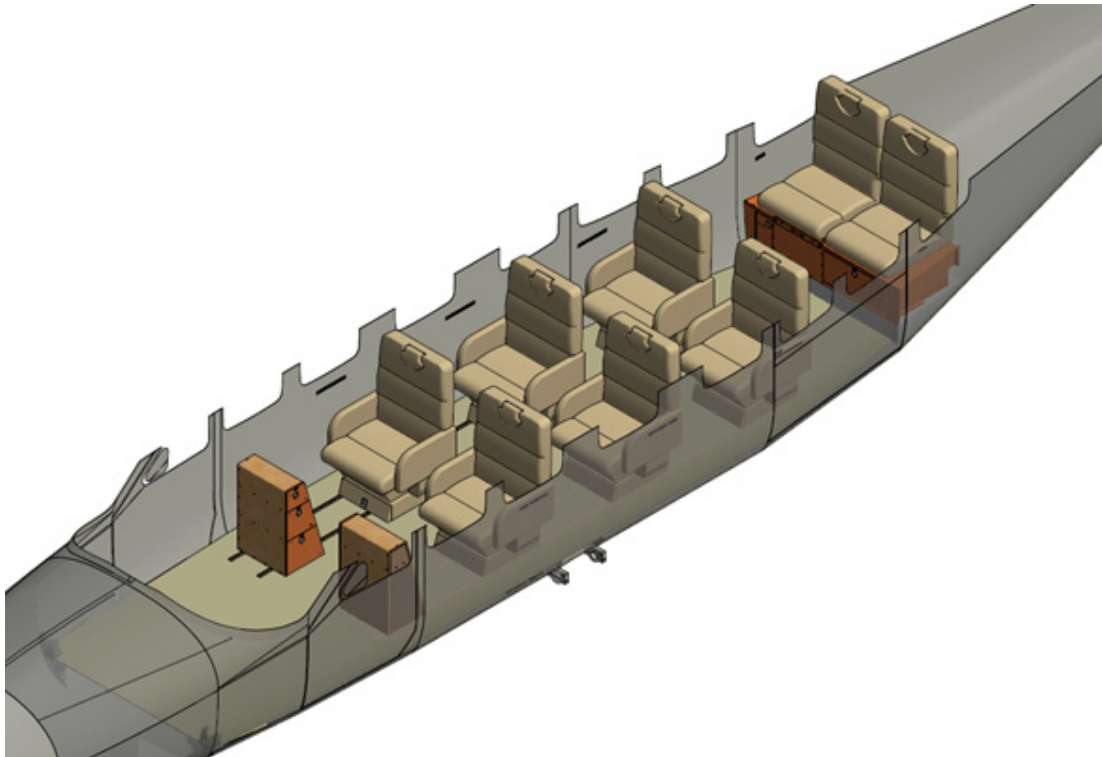


Figure 5 – Seating Configuration -5 (see drawing 1004845)

Seating Configuration -6

Seating configuration -6 is comprised of six each club seats and a divan cabinet with two additional seats on top. Interior amenities include two each cabinets for storage, two each folding tables for the club seating. Additional stowage includes a drawer in the divan cabinet. Toilet attachment capability is also included in the divan cabinet.

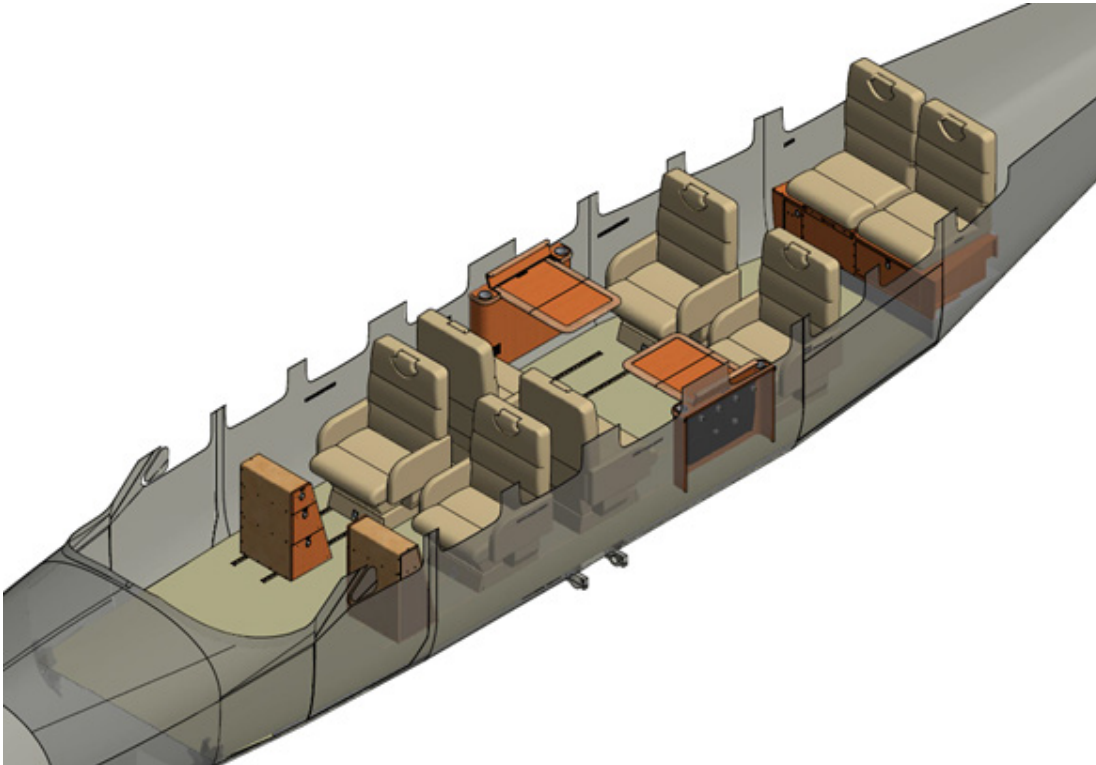


Figure 6 – Seating Configuration -6 (see drawing 1004845)

INSTRUCTIONS FOR CONTINUED AIRWORTHINESS
208/208B EXECUTIVE INTERIOR

Seating Configurations -7, -10, -12, and -15

The following seating configurations are comprised of four each club seats in Cessna 208 aircraft. Interior amenities include optional folding table installation.

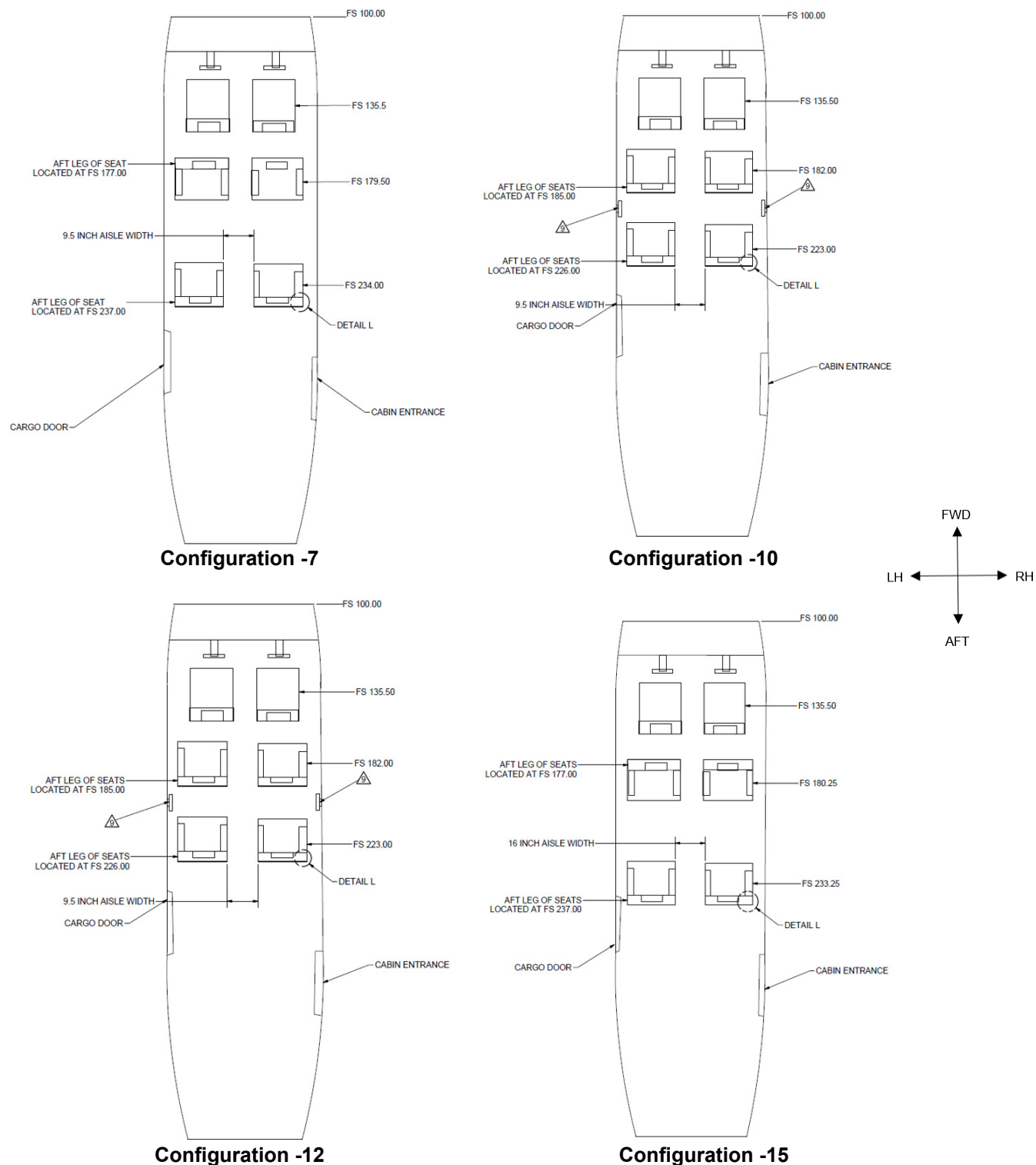


Figure 7 – Seating Configuration -7, -10, -12, and -15 (see drawing 1004845)

Seating Configurations -8, -9, -11, -13, and -14

The following seating configurations are comprised of four or six each club seats in Cessna 208B aircraft. Interior amenities include optional folding table installation.

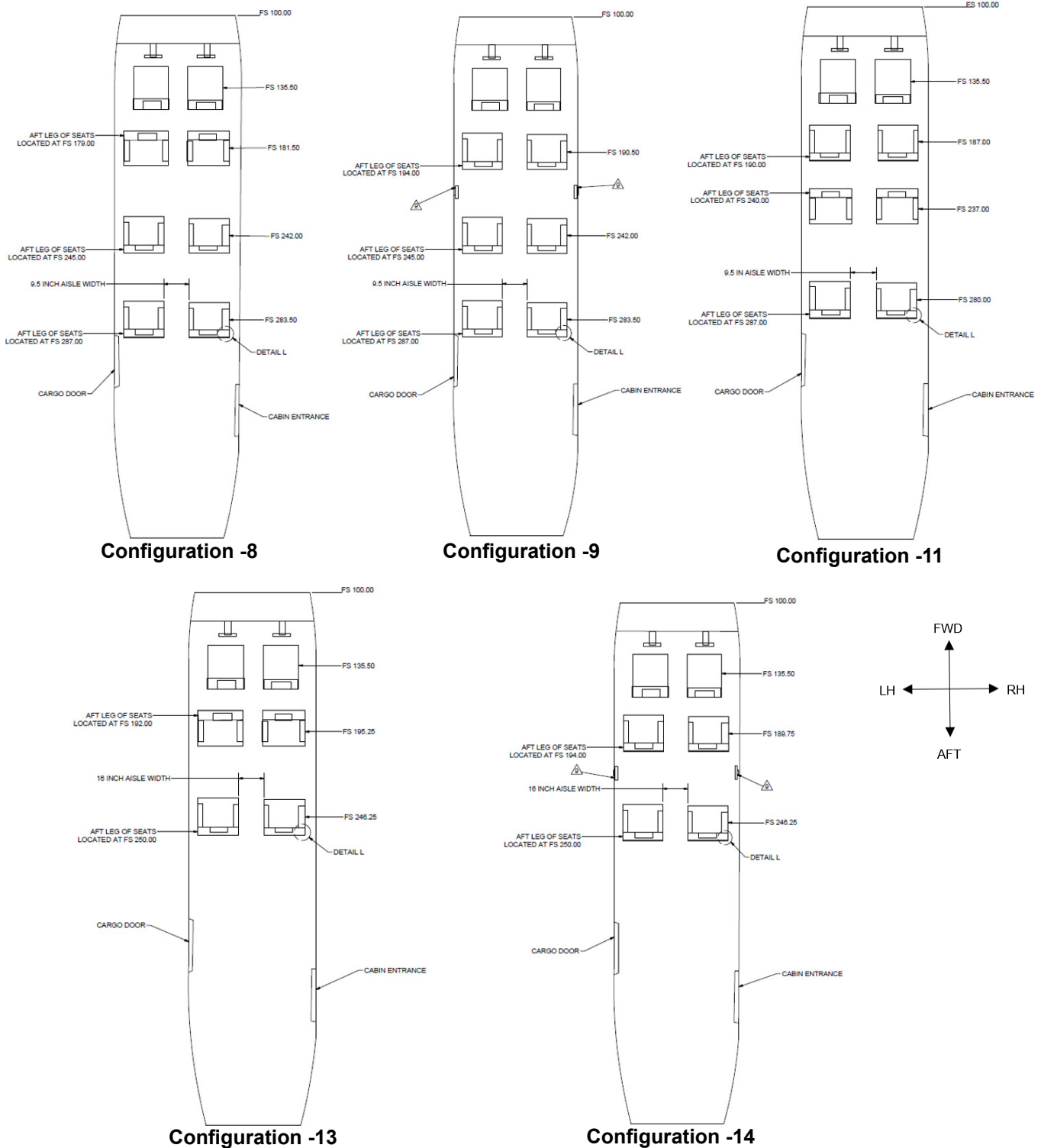


Figure 8 – Seating Configuration -8, -9, -11, -13, and -14 (see drawing 1004845)

Installation/Removal

For detailed location, installation and removal specifications for each of the components in all seating configurations, see Wipaire, Inc. drawing number 1004845, latest approved revision, as supplied with your STC kit.

Generally, installation and removal instructions for each of the primary executive interior components are as follows:

Seat installation is performed by

- a) Place the seat in the location specified on drawing number 1004845
- b) Install the track seat fitting assemblies, separated from the seat, into the aircraft seat track on the cabin floor.
- c) With the feet correctly positioned, position the seat on all four fitting assemblies.
- d) After proper alignment has been attained, permanently secure the attachment points of the seat.

After installing all seats, before final signoff, double check that all seat-to-airframe attachments, 4 per seat, are secure.

After seats have been adjusted once, at a given position in the aircraft, they should not require further adjustment when being installed and removed.

Seat removal is accomplished by removing the top nuts on the seat track fitting assemblies, removing the seat, then removing the seat track fittings.

Cabinet installation is performed by installing the cabinet attachment studs into the existing track installed in the aircraft at the location shown on drawing 1004845. Hardware for the cabinet attachment operates much the same as for the seat. Locking ears on the attachment hardware fit in to the seat track, which are then secured with nuts and a knurled fitting.

To install the folding table assembly, find nutplates existing in the fuselage structure at the table installation location as defined in drawing 1004845. Map pattern to drill holes into the back plate of the table assembly. Fasten table to the fuselage wall using screws to fit existing nutplates. Use spacers as needed for the table fit. Then, place the shroud over the table assembly, aligning the attachment pins. Then, tighten the cam locks on the bottom of the shroud to lock the shroud to the attachment pins.

Divan cabinet installation is performed by first mapping the geometry of the cargo tie nutplate locations on the aft cabin step. Then that pattern is used to install inserts into the bottom of the divan cabinet. After fitting cabinet with inserts aligned, secure to the airframe with screws through the inserts into the nutplates. Upon removal, inserts remain installed in the bottom of the divan.

Proper storage and packaging of removed parts and assemblies is critical to ensure damage does not occur during storage or shipping. Honeycomb assemblies such as the cabinets and tables should be wrapped in a protective plastic coating, and then placed in boxes or crates with protective foam or other packaging to help prevent impact damage. Honeycomb assemblies should be stored in a dry environment.

Storage requirements for upholstered seats may vary depending on the type of upholstery that was employed at the time of installation. Generally, when seats are removed for storage or shipping, they should be placed in a suitably large container with supports to keep the seats from shifting during transportation, the container should have protective padding. Seat assemblies should be stored in a dry environment, to help prevent corrosion.

Weight and Balance

When seats or other interior components are installed or removed, the aircraft empty weight and balance must be updated to reflect the configuration change.

It is acceptable for components to be removed from a given seating configuration. For example, in seating configuration 1, it would be acceptable to remove any one or more of the installed seats, cabinets, or table assemblies. Removal of these components does not affect compliance with airworthiness requirements. However, when installed, all components must be located at the specific positions shown on drawing number 1004845, latest FAA approved revision. Removal of any one or more of the interior components may be desired to accommodate alternate passenger configurations, in combination with other approved seating systems for the aircraft.

Drawing number 1004845 includes a sample empty weight and balance adjustment calculation for a complete executive interior installation. Refer to the actual weight and balance update provided with your particular interior installation document package, reflecting the actual change to the empty aircraft weight and balance. Component weights as listed on drawing number 1004845 are approximate and must be exactly weighed during installation due to variations in upholstery. Arm locations on this drawing are accurate relative to the approved center of gravity position for each component.

Drawing number 1004845 also includes station location dimensions for all items of mass installed in accordance with this STC, which match the center of gravity station locations in the drawing tables.

For information on weight and balance for passenger and light cargo loading, see Aircraft Flight Manual Supplement (AFMS) document number POHSA01397NY, latest approved revision. Occupant center of gravity positions are also given for reference on drawing number 1004845.

Maintenance Instructions

Maintenance for the executive interior seating system approved under this STC is to be performed "on condition."

There are no specific timed interval maintenance tasks for specific components that must be accomplished related to the seating system installation.

Inspection of the interior system components, their security, attachment, and overall condition should be assessed as part of a standard hundred hour interior inspection of the aircraft.

Seat assemblies shall be maintained in accordance with the following manuals, which are approved under the UTC Aerospace seat FAA technical standard order authorization per technical standard order number C39b.

Manual number M3003K, revision K, dated 9/25/14, or later approved revision

- UTC Aerospace Model 303463, fixed single seat
- UTC Aerospace Model 303660-19C, swiveling single seat
- UTC Aerospace Model 303660-20C, swiveling single seat

Maintenance Manual ATA 25-20-70, Original Issue, September 1995, or later approved revision

- B/E Aerospace Model 2524.014/.01-1332B
- B/E Aerospace Model 2524.014/.01-1332A

Copies of these manuals may be obtained by contacting Wipaire, Inc. Reference Wipaire Service Letter 236 for additional seat component options.

INSTRUCTIONS FOR CONTINUED AIRWORTHINESS
208/208B EXECUTIVE INTERIOR

Seat belt and harnesses shall conform to TSO C114a, and shall be installed per the appropriate UTC Aerospace or B/E Aerospace manual. Harnesses for forward and aft facing seats must be installed on the outboard side of the seat.

Repair of damage to honeycomb structures is not specifically addressed by these maintenance instructions. If, during conditional inspection, structural honeycomb damage to any of the components is noted, contact Wipaire for approved repair or replacement information.

Repair of technical standard order approved seat structure is not specifically addressed by these maintenance instructions. Repair data for seat structure must be specifically FAA approved. Contact Wipaire, Inc. for further information on repairs to damaged seat structure.

THIS PAGE INTENTIONALLY LEFT BLANK

SECTION 2 - AIRWORTHINESS LIMITATIONS

This Airworthiness Limitations section is FAA approved and specifies maintenance required under paragraphs 43.16 and 91.403(c) of the Federal Aviation Regulations unless an alternative program has been FAA approved.

The aircraft Airworthiness Limitations are unchanged as a result of installation of the seating system addressed by this STC.

FAA APPROVED



DATE

6/27/16

THIS PAGE INTENTIONALLY LEFT BLANK

SECTION 3 - ILLUSTRATED PARTS REFERENCE

For a detailed parts breakdown, addressing each component installed for each seating configuration, see Wipaire, Inc. drawing number 1004845, the latest approved revision. This installation drawing includes a detailed Bill of materials for each seating configuration. A current copy of this drawing was supplied with your seat installation paperwork package. Additional copies of this drawing can be obtained by contacting Wipaire, Inc.