



WIPLINE FLOATS | MODIFICATIONS | AIRCRAFT SALES
AVIONICS | INTERIORS | MAINTENANCE | PAINT

SERVICE LETTER 273

2100/2350 Spreader Bar Mount Tube Reinforcing Insert, Inspection

Aircraft Makes/Model(s):	Float Model(s):	Compliance: Optional	By: MAS
See Effectivity Table	2100 Series 2350 Series	Part Number: 1012851	Approved: DRH
		Date: 5/19/2025	Revision: A

LOG OF REVISIONS

Revision	Description	Date
A	Initial release	5/19/2025

FAA approval has been obtained for technical data in this publication that affects STC or TSO design compliance.

EFFECTIVITY:

Wipline model 2100 and 2350 floats fitting one or both of the following criteria:

- Produced prior to serial numbers 211103A & 211104A (2100 floats) or 23203A & 23204A (2350 floats)
- Operated as a floatplane trainer aircraft

COMPLIANCE:

Compliance is optional.

BACKGROUND:

It is possible for spreader bar mount tubes to be crushed when torquing top deck fasteners. Similarly, hole elongation and deformation has been observed at this location on aircraft where on-step water maneuvers occur regularly – namely floatplane training operations. To remedy this:

- A reinforcing insert has been added to the spreader bar mount tubes. See Figure 1 for a visual reference.
- An item has been added to the inspection checklist within the 2100/2350 Service Manual (document number 1002549, revision U or later).

This service letter serves as a notification to owners, operators, and maintainers of this product update, which is also now reflected in the service manual and corresponding parts manuals.

COMPLIANCE METHOD:

Install spreader bar mount tube with reinforcing insert as shown in the Work Instructions section of this service letter, if not already present (see effectivity section). Incorporate routine inspection of this area into maintenance plan as appropriate - review the inspection checklist within the 2100/2350 Service Manual.

APPROXIMATE SHOP HOURS:

The work instruction will take approximately 50 labor hours per float set, including removal and reinstallation of floats from/to aircraft.

WARRANTY INFORMATION:

This service letter does not include warranty for labor or parts.

TECHNICAL DATA:

Copies of this service letter, associated service kit (if applicable), float service manual, and float parts manual are available at www.wipaire.com. For installation drawings, email Wipaire customer service as needed at customerservice@wipaire.com.

ITEMS PROVIDED IN SERVICE KIT 1012851-01 (1 KIT PER AIRCRAFT)			
ITEM	QTY	PART NUMBER	DESCRIPTION
1	4	1012630	ASSEMBLY, TUBE, SPREADER BAR, MOUNTING
2	8	AN6-41A	BOLT, 3/8-24, 3.5625 GRIP, UNDRILLED, STEEL
3	12	MS21044N4	NUT, LOCKING, REGULAR HEIGHT, 1/4-28 UNF
4	8	MS21044N5	NUT, LOCKING, REGULAR HEIGHT, 5/16-24 UNF
5	12	MS21044N6	NUT, LOCKING, REGULAR HEIGHT, 3/8-24 UNF

Work Instructions

1. Position and prepare aircraft for safe maintenance.
 2. Remove aircraft from floats. Refer to respective float installation drawings.
- Note:** Refer to Figure 1 for steps 3-8.
3. Unbolt and remove spreader bars from mounting tubes while supporting floats individually. Support fly wires.
 4. Remove the bolts fastening mounting tubes in place. It may be helpful to keep the tubes temporarily pinned in place to prevent the internal spacer from falling.
 5. Inspect hardware and replace on condition. Refer to parts manual for any items not provided in kit.
 6. Check orientation of internal spacers: the wide/flanged surface must face up, against the underside of the top deck. Typically, the spacer can be briefly held in place by using a bolt (item 2) to pinch it fwd or aft against internal structure. This method can aid this check, as well as help in quick placement of replacement tubes (following step).
 7. Insert and fasten replacement spreader bar mounting tube with pre-assembled insert (item 1).
 8. Reinstall spreader bars and fly wires.
 9. Reinstall floats on aircraft in accordance with installation drawings.

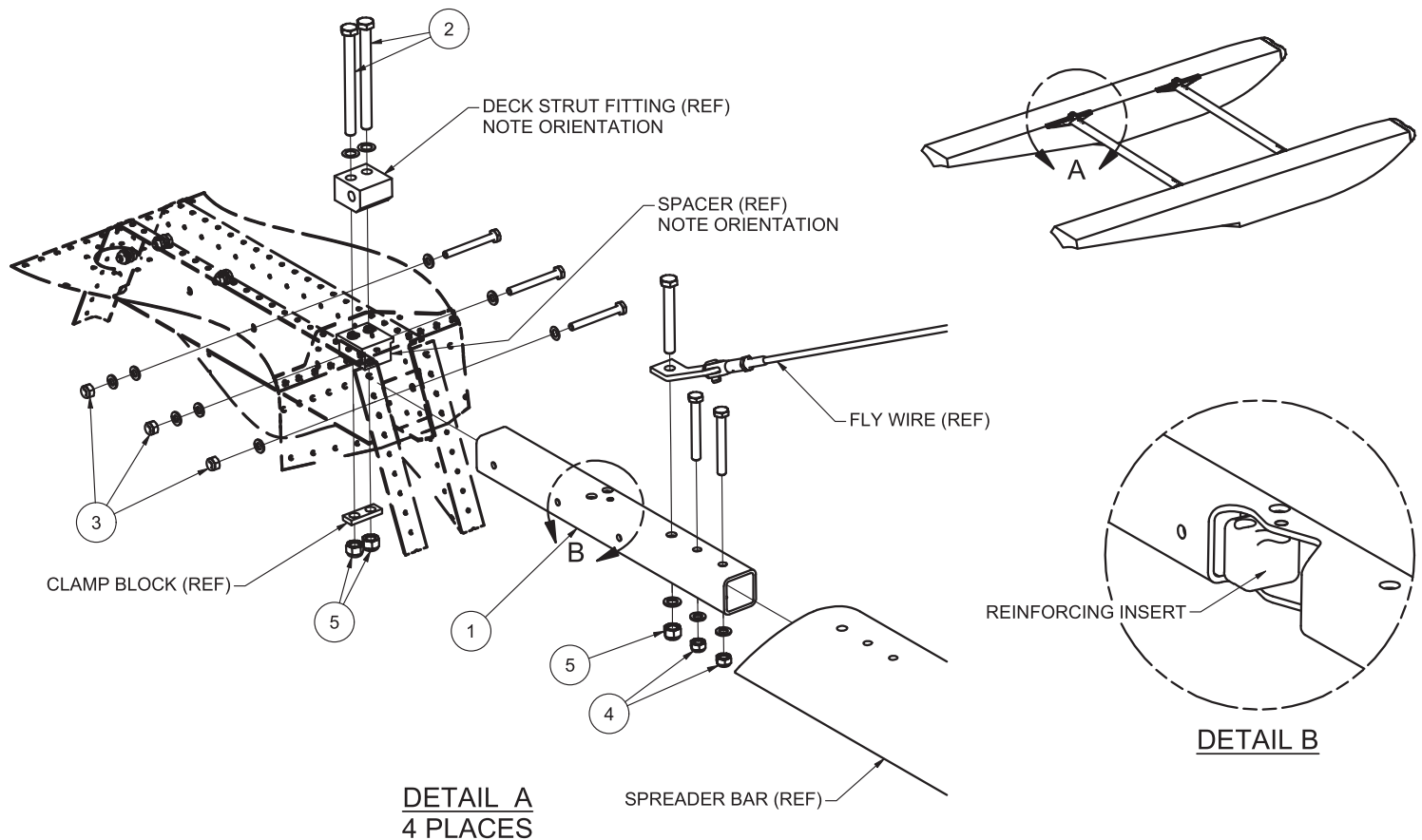


Figure 1

Aircraft Closing & Return to Service

1. Upon completion of inspection, enter information in Aircraft Logbook for completion of Wipaire Service Letter 273.
2. Incorporate routine inspection of this area into maintenance plan as appropriate - review the inspection checklist within 2100/2350 Service Manual (revision U or later).